

# AVAILABLE FOR SALE/LEASE

780 Newtown Yardley Road Suite 321  
Newtown, PA 18940

**FOR SALE**  
**\$550,000**

**FOR LEASE**  
**\$23/SQ. FT.**



**Dan McCloskey, GRI, MBA**  
**RE/MAX Properties, Ltd.**

McCloskeyRemax@gmail.com  
Office: (215)-968-7400  
Cell: (215)-669-8333





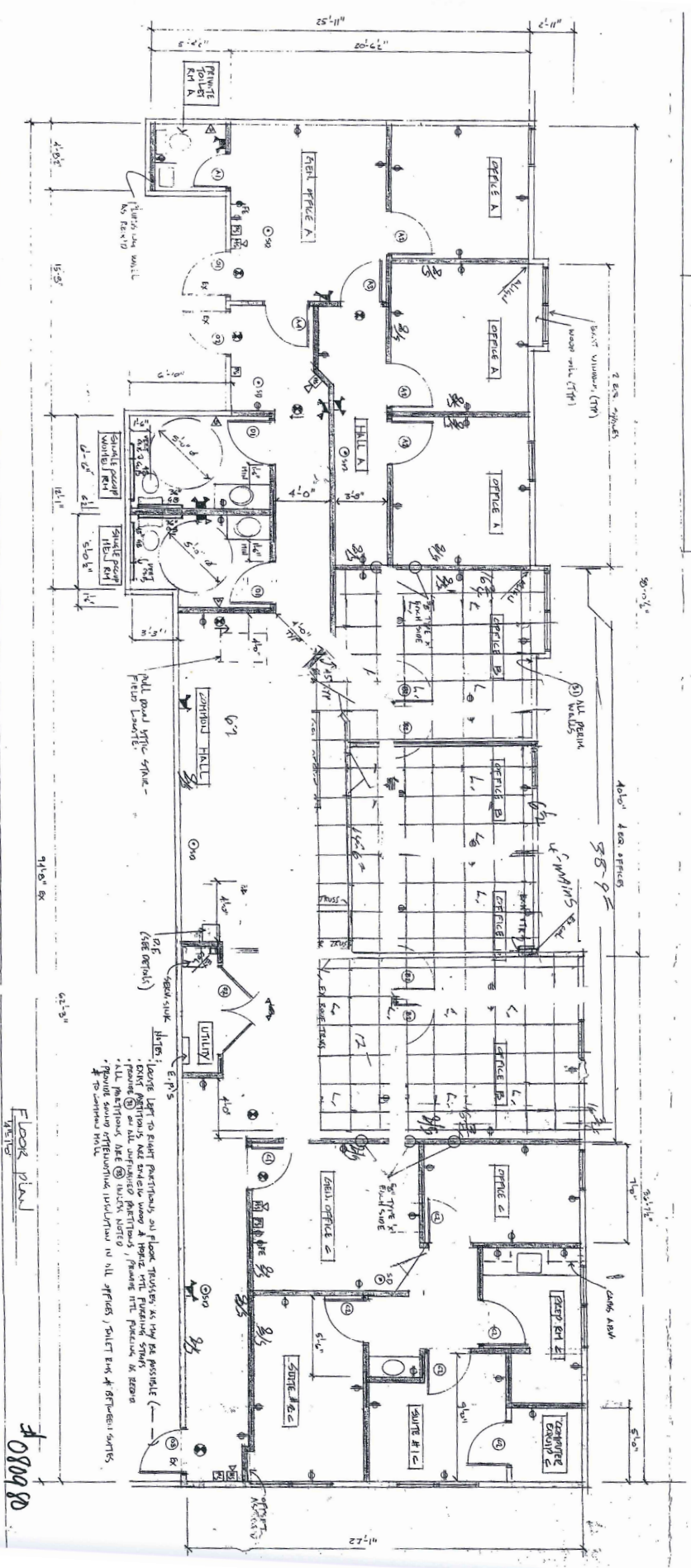
*Second floor office/medical condo in elevator served building FOR LEASE or FOR SALE. Conveniently located within 1 mile of downtown Historic Newtown Borough as well 2 miles from I-295. Several private offices as well as 3 ADA bathrooms; current tenant occupying through November.*



**Dan McCloskey, GRI, MBA**  
**RE/MAX Properties, Ltd.**

McCloskeyRemax@gmail.com  
Office: (215)-968-7400  
Cell: (215)-669-8333





# Dan McCloskey, GRI, MBA RE/MAX Properties, Ltd.

McCloskeyRemax@gmail.com  
Office: (215)-968-7400  
Cell: (215)-669-8333

