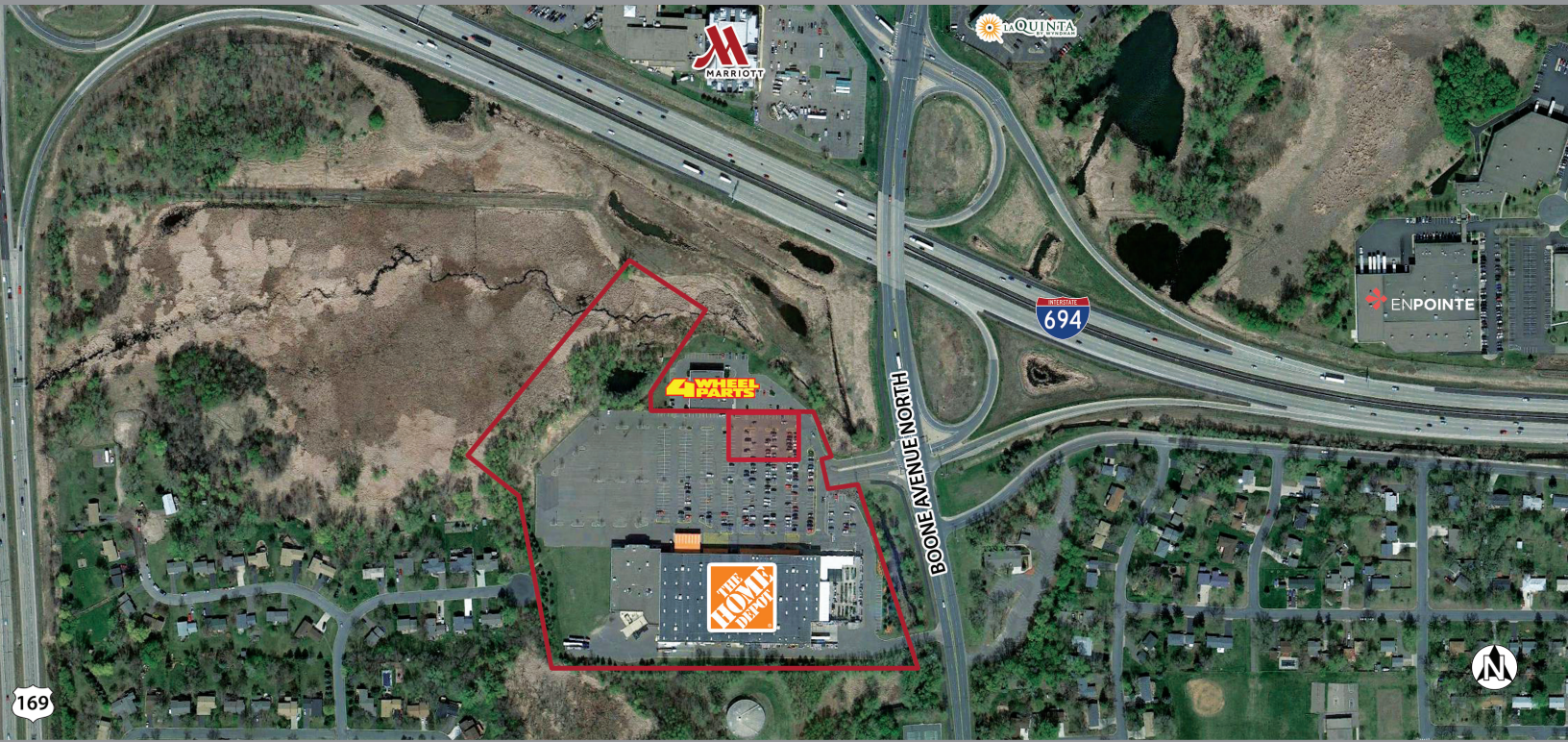


Park Place Centre

6701-6741 Boone Ave. N.
Brooklyn Park, MN 55428
Hennepin County



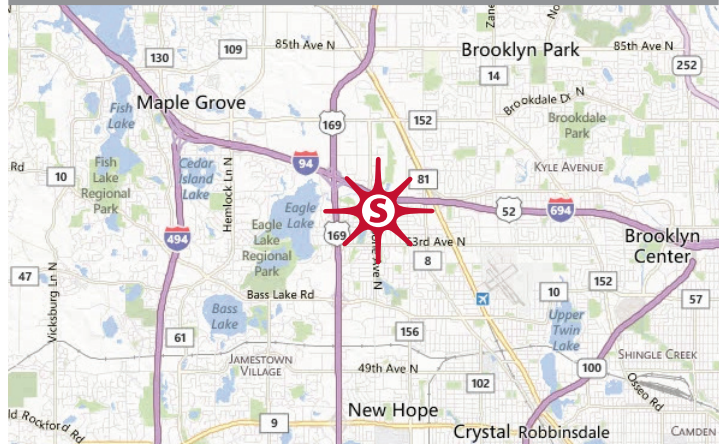
key features

- anchored by The Home Depot
- highly visible and easily accessible from I-694
- 32,540-sf anchor pad available
- ±0.61-acre outlot available
- daily traffic counts: 104,148 on I-94/694; 82,586 on U.S. 169; and 11,500 on Boone Avenue

demographics

	1 mile	3 miles	5 miles
population	5,979	88,296	244,170
households	2,350	34,602	93,173
avg. household income	\$108,039	\$114,947	\$134,265
daytime population	8,623	69,569	147,168

2023 Estimates. Source: Applied Geographic Solutions 4/2023, TIGER Geography



retail space for lease 11,582 – 26,550 sf

Andrew T. Hasbrook 317.524.7868 ahasbrook@sandordev.com

10689 N. Pennsylvania St., Suite 100, Indianapolis, IN 46280

www.sandordev.com
sandor

Park Place Centre

6701-6741 Boone Ave. N.
 Brooklyn Park, MN 55428
 Hennepin County

future development

UNIT	TENANT	DIMS.	S.F.
6701	HOME DEPOT	430 x 267 IRR	115,227
6731	AVAILABLE	60 x 220 IRR	15,001
6741	AVAILABLE	79 x 146 IRR	11,582
6771	4 WHEEL PARTS - OWNED BY OTHERS	125 x 110 IRR	12,000

FUTURE BUILD AREA/ANCHOR PAD	SIZE
OUTLOT	±0.61 AC

