

Prime 2,400 SF Medical/Office Space for Lease

701 Howe Ave, Sacramento, CA 95825



Property & Location Highlights:

Suite Size: ±2,400 square feet

Year Built: 1972

Last Renovated: 2019

Buildout: Lobby, admin area, doctor offices, numerous exam rooms (6 with sinks), nurse station, lab, breakroom, and 2 restrooms (1 ADA)

Signage: Ability to utilize window signage face Howe Ave

Traffic Counts: ±45,000 cars/day

Parking: Abundant shared onsite parking

Access: Capital City Freeway and Hwy 50 within close proximity

Nearby: Arden Fair Mall, Pavillions, Loehmann's Plaza, California State University, Sacramento

Zoning: BP (Business Professional)

Lease Rate: \$2.25/SF full service (excluding janitorial)



This information contained herein has been obtained from sources deemed reliable, but accuracy is not guaranteed.

Jacks Commercial Real Estate has not verified it and makes no guarantee, warranty or presentation about it.

Brian Jacks | 916-837-3456 | Brian@JacksCRE.com | www.JacksCommercial.com | DRE License #02088254

Prime 2,400 SF Medical/Office Space for Lease

701 Howe Ave, Sacramento, CA 95825



This information contained herein has been obtained from sources deemed reliable, but accuracy is not guaranteed.

Jacks Commercial Real Estate has not verified it and makes no guarantee, warranty or presentation about it.

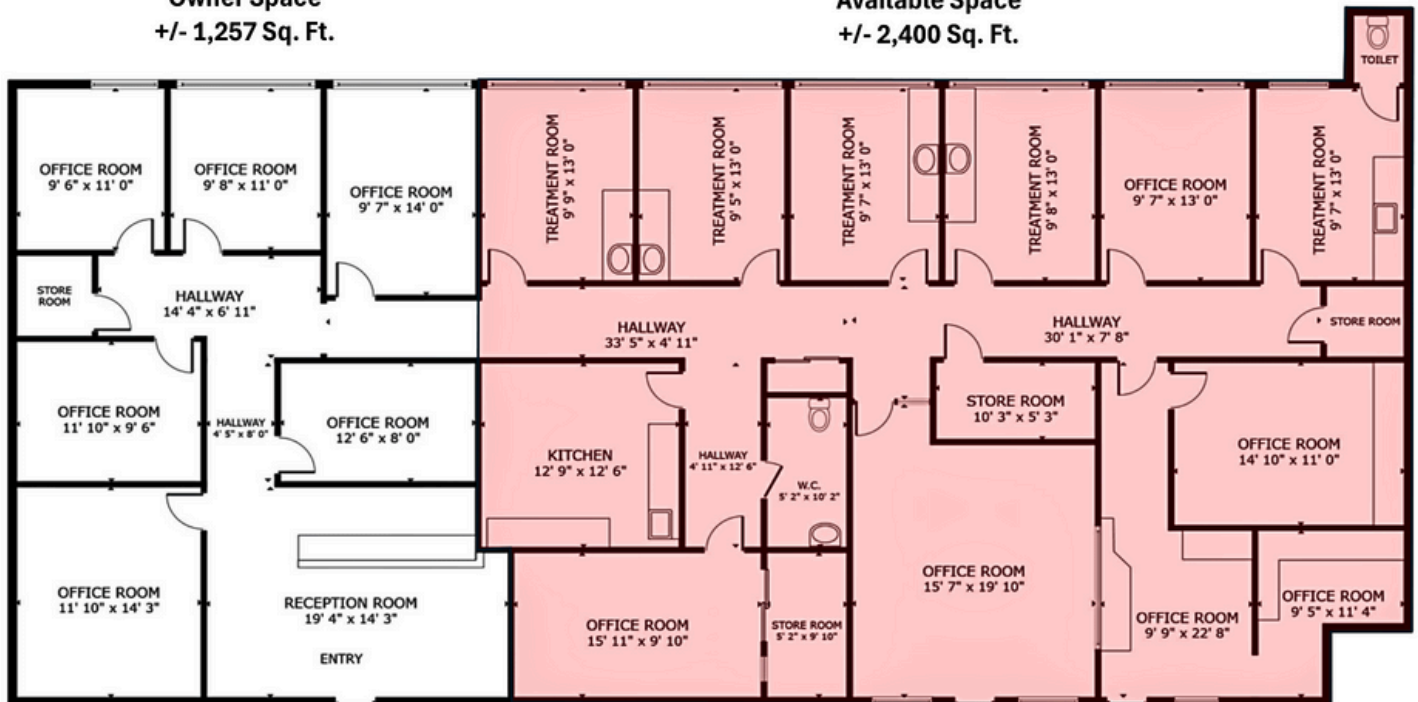
Brian Jacks | 916-837-3456 | Brian@JacksCRE.com | www.JacksCommercial.com | DRE License #02088254

Prime 2,400 SF Medical/Office Space for Lease

701 Howe Ave, Sacramento, CA 95825

Owner Space
+/- 1,257 Sq. Ft.

Available Space
+/- 2,400 Sq. Ft.



This information contained herein has been obtained from sources deemed reliable, but accuracy is not guaranteed. Jacks Commercial Real Estate has not verified it and makes no guarantee, warranty or presentation about it.

Brian Jacks | 916-837-3456 | Brian@JacksCRE.com | www.JacksCommercial.com | DRE License #02088254