

EAST NEW YORK, BROOKLYN NY

679 VAN SINDEREN AVENUE

MOD



SPACE DETAILS

LOCATION

Between New Lots Avenue and Hegeman Avenue

SPACE

Total Available: 4,585 SF

Divisions: 2,330 SF - 2,255 SF

FRONTAGE

73 Feet

CEILING HEIGHT

15 Feet

POSSESSION

Immediate

ASKING RENT

\$24 PSF

NEIGHBORS

Dollar Tree, Finest Cleaners, (within Van Sinderen Plaza's retail base). Additionally, the surrounding East New York corridor features local eateries, bodegas, and service businesses.

TRANSPORTATION



COMMENTS

- 2 spaces
- Can be combined
- Ownership will build to suite
- Employee parking and basement space can also be made available.
- Great location at the New Lots L subway stop. Multiple configurations available, ideal for retail, non-profit programming, medical, office, or flex.

CONTACTS

MEYER DAGMY

718-249-3613

m@modcre.com

EDDIE MAMIYE

917-379-6719

e@modcre.com



INTERIOR IMAGES



CONTACTS

MEYER DAGMY

718-249-3613

m@modcre.com

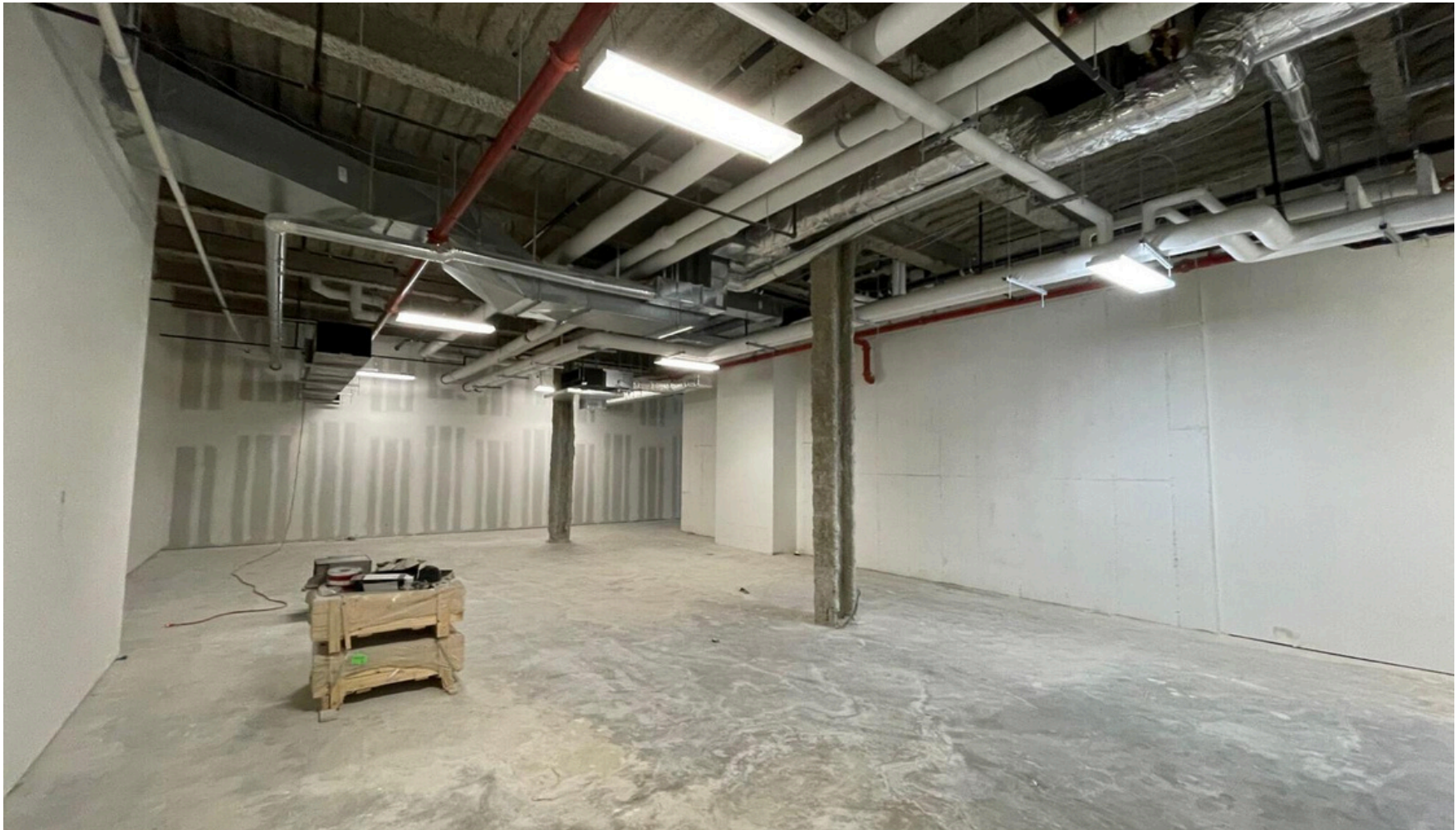
EDDIE MAMIYE

917-379-6719

e@modcre.com



OTHER IMAGE



CONTACTS

MEYER DAGMY

718-249-3613

m@modcre.com

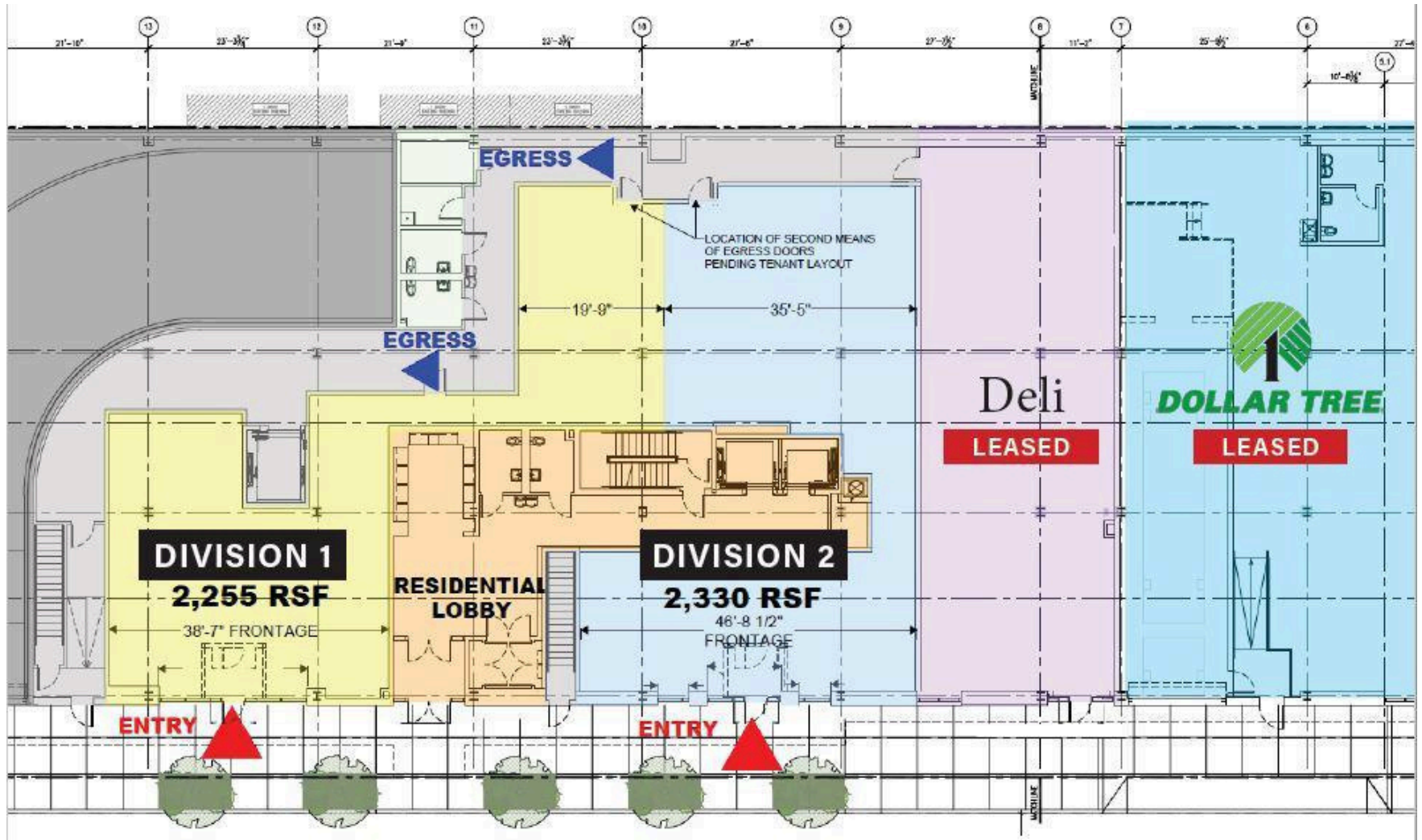
EDDIE MAMIYE

917-379-6719

e@modcre.com



FLOOR PLAN



CONTACTS

MEYER DAGMY

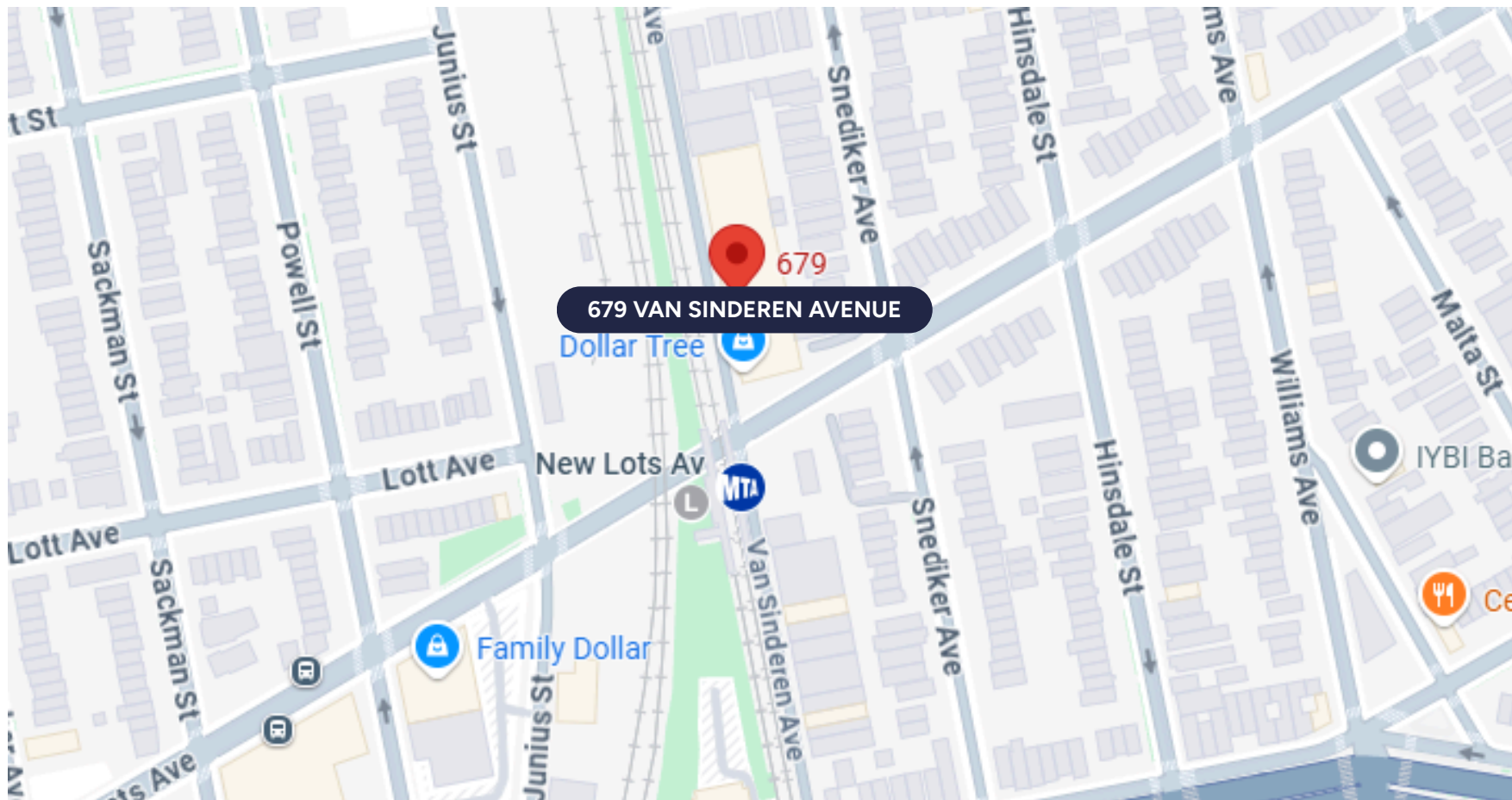
718-249-3613
 m@modcre.com

EDDIE MAMIYE

917-379-6719
 e@modcre.com

MOD

AREA MAP



CONTACTS

MEYER DAGMY

718-249-3613
m@modcre.com

EDDIE MAMIYE

917-379-6719
e@modcre.com

MOD