

AVAILABLE FOR LEASE



4600 Frederick Drive

SUITE F

ATLANTA, GEORGIA 30336



Faropoint

STREAM[®]



4600 Frederick Drive

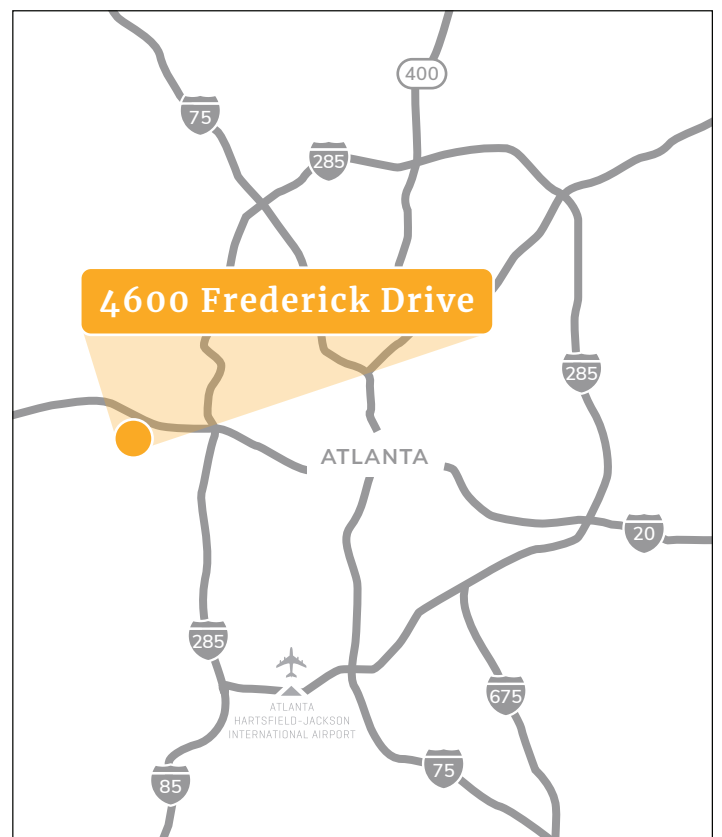
ATLANTA, GEORGIA 30336



Available for lease at 4600 Frederick Drive is a 10,026 square foot suite. The space offers an existing 1,336 square feet of office space, 2 dock doors, and a drive-in door. The building is conveniently located with access to I-20 and I-285 within several miles.

■ AVAILABILITY HIGHLIGHTS

Suite	4600-F
Size	10,026 SF
Office	1,336 SF
Dock-High Doors	2
Drive-in	1
Clear Height	18'
Year Built	1971
Zoning	M2
Proximity	0.8 miles to I-20 3 miles to I-285





4600 Frederick Drive

ATLANTA, GEORGIA 30336

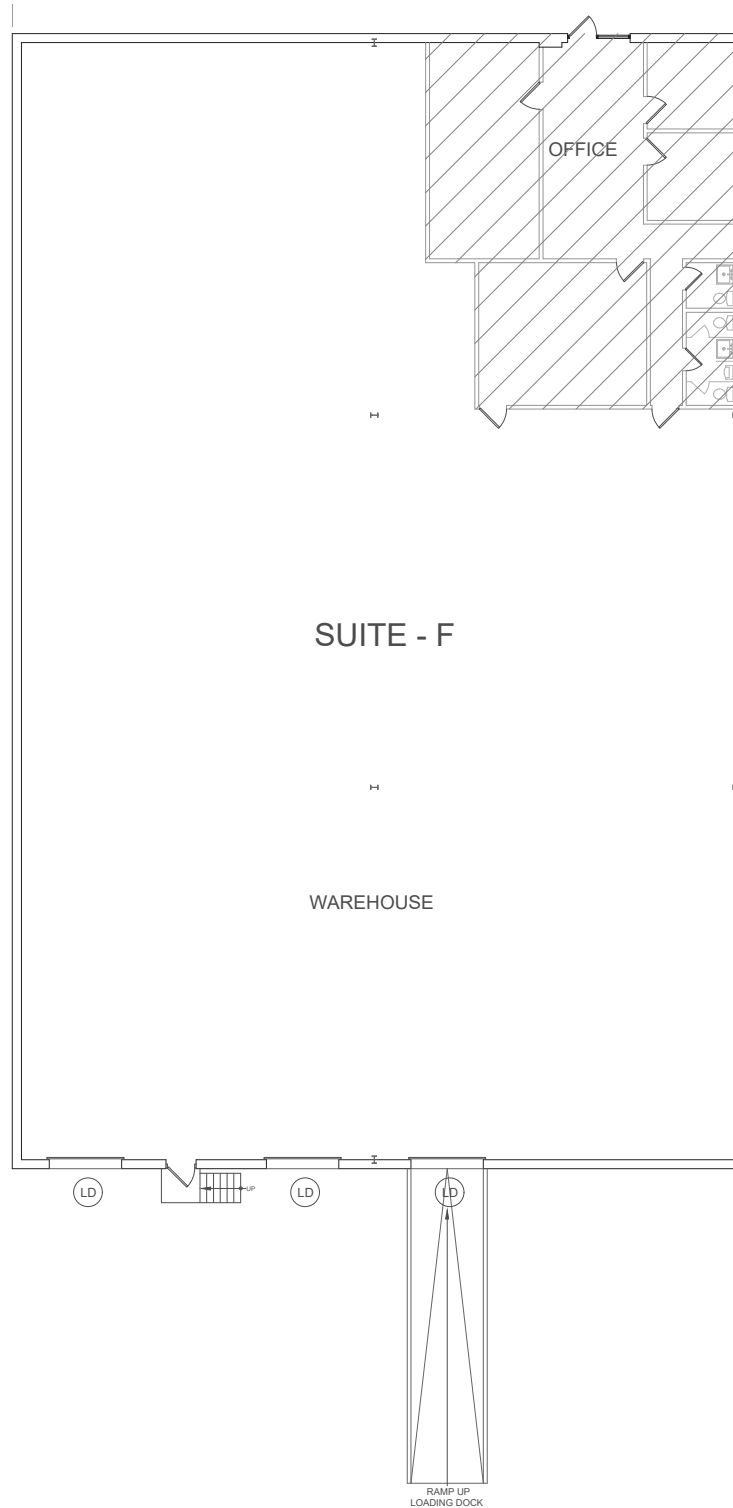




4600 Frederick Drive

ATLANTA, GEORGIA 30336

■ SUITE F | 10,026 RSF





Brad Bays

Managing Director

brad.bays@streamrealty.com

404.579.7761

Steve DeVinney

Senior Vice President

steve.devinney@streamrealty.com

404.915.2946

Garrett Jones

Associate

garrett.jones@streamrealty.com

229.669.0453