

10105

BANBURRY CROSS DR
LAS VEGAS, NV 89144

SUMMERLIN MEDICAL OFFICE III

Turnkey Suites
Now Available



HEALTHCARE

JAMIE KRAHNE
SENIOR VICE PRESIDENT
702.216.2363 **CELL**
jamiiek@dcghealthcare.com
B.143850/PM.164496

MIKE TYMCZYN
VICE PRESIDENT
702.216.2371 **DIRECT**
mtymczyn@dcghealthcare.com
S.177844

PROPERTY HIGHLIGHTS

- On the campus of Summerlin Hospital Medical Center
- Professional property management
- Build-to-suit shell space available
- Turn-Key suites available
- Generous tenant improvement allowances
- Current specialties include: **Pediatrics, Cardiology, Orthopedics and Pulmonology**

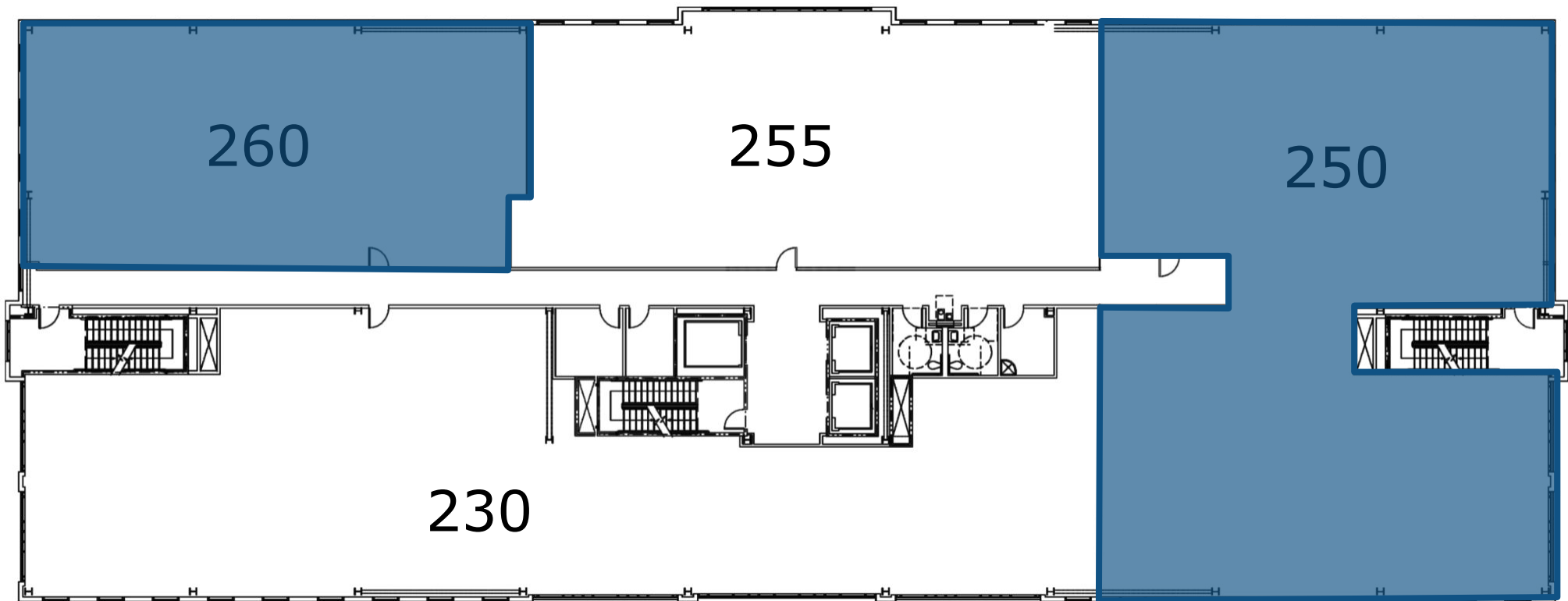
AREA MAP



SECOND FLOOR

AVAILABLE SUITES

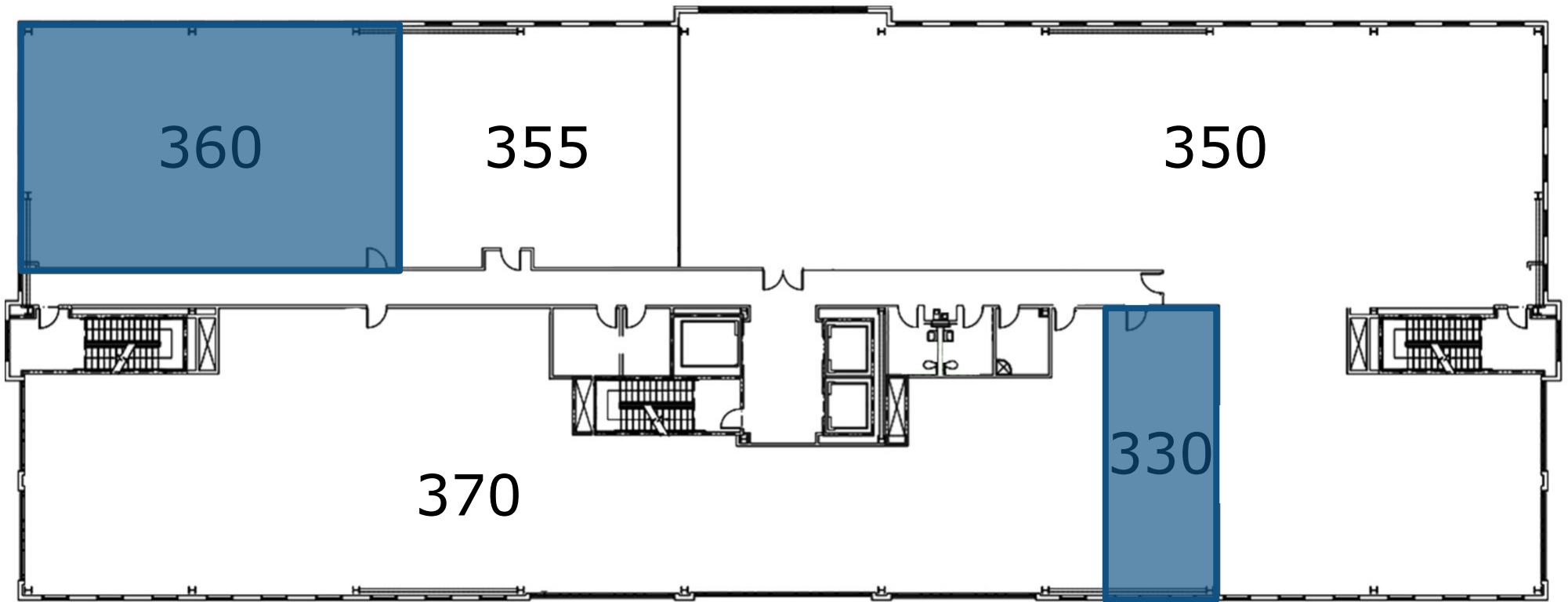
SUITE 250	6,730 SF TURN-KEY
SUITE 260	3,179 SF SHELL



THIRD FLOOR

AVAILABLE SUITES

SUITE 330	1,130 SF SHELL
SUITE 360	2,594 SF SHELL

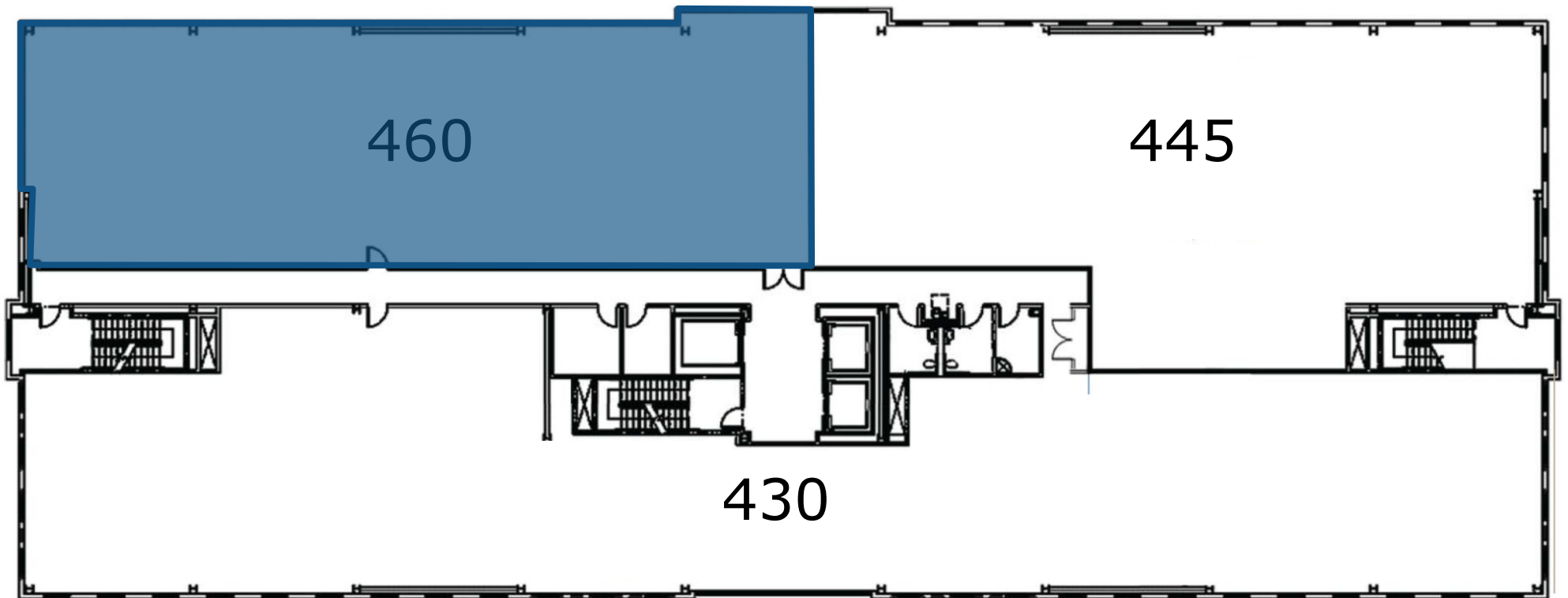


FOURTH FLOOR

AVAILABLE SUITES

SUITE 460

**5,301 SF
TURN-KEY**



HOSPITAL SERVICES



Cardiovascular

- Chest Pain Center
- Angioplasty
- Cardiac catheterization
- Pacemaker/defibrillator implants
- Bi-ventricular implants
- Peripheral vascular interventions
- Cardiovascular surgery
- Intravascular Ultrasound

Diabetes Treatment Center

- Inpatient care

Dialysis

- Inpatient care

Emergency Services

- Urgent and emergency care 24/7
- Pediatric ER
- Advanced primary stroke center

Endoscopic Procedures

Laboratory Services

Maternity Services

- Triage
- Antepartum
- Labor and Delivery
- Postpartum
- Level I-II-III Neonatal ICU

Orthopedics

Radiology

- Angiography
- CT scan
- MRI
- Nuclear Medicine
- X-ray
- Digital Mammography

Rehabilitation

- Inpatient Physical Therapy
- Speech Therapy
- Occupational Therapy
- Short-term inpatient rehabilitation unit

Surgery

- Inpatient
- Outpatient
- Robotic

Wound Care

- Inpatient care
- Outpatient care
- Hyperbaric medicine