

FOR SALE

10601 BELMONT AVE
FRANKLIN PARK, IL

7.34-AC
200,000- SF
BUILDING

*Single Tenant
Manufacturing
- Distribution
Opportunity*

BRAD FRANK
Director

+1 312 470 3837
brad.frank@cushwake.com

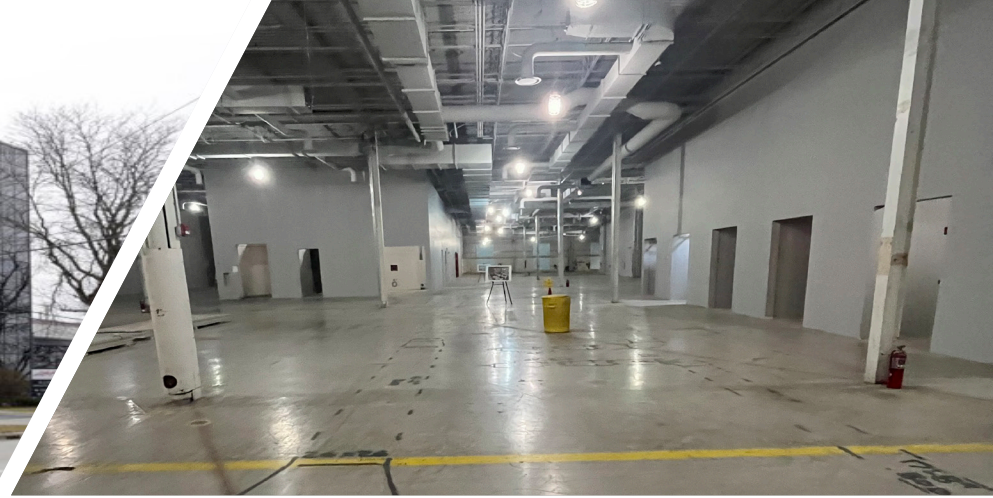
AL CARUANA
Executive Managing Director

+1 847 720 1326
al.caruana@cushwake.com

JORDAN ROVITO
Executive Director

+1 312 470 3839
jordan.rovito@cushwake.com

 **CUSHMAN &
WAKEFIELD**



10601 BELMONT AVE
FRANKLIN PARK, IL

PROPERTY FEATURES

Sale Price : Subject to Offer

200,000 SF

120,000 Warehouse / 80,000 Office
TOTAL SPACE
AVAILABLE

7.34 AC

LOT SIZE

6

DOCKS

20'

CLEAR HEIGHT

1967

YEAR BUILT

1

DRIVE-IN DOORS

6"

REINFORCED
CONCRETE FLOORS

141

PARKING SPACES

(2) 1,600 amp feed at 480 volts

4-Story Building
POWER

(2) 2,000 amp feed at 480 volts

(1) Center Factory & (1) West Factory
POWER

**Next to ComEd Substation*

Single Tenant Manufacturing - Distribution Opportunity

BRAD FRANK
Director

+1 312 470 3837
brad.frank@cushwake.com

AL CARUANA
Executive Managing Director

+1 847 720 1326
al.caruana@cushwake.com

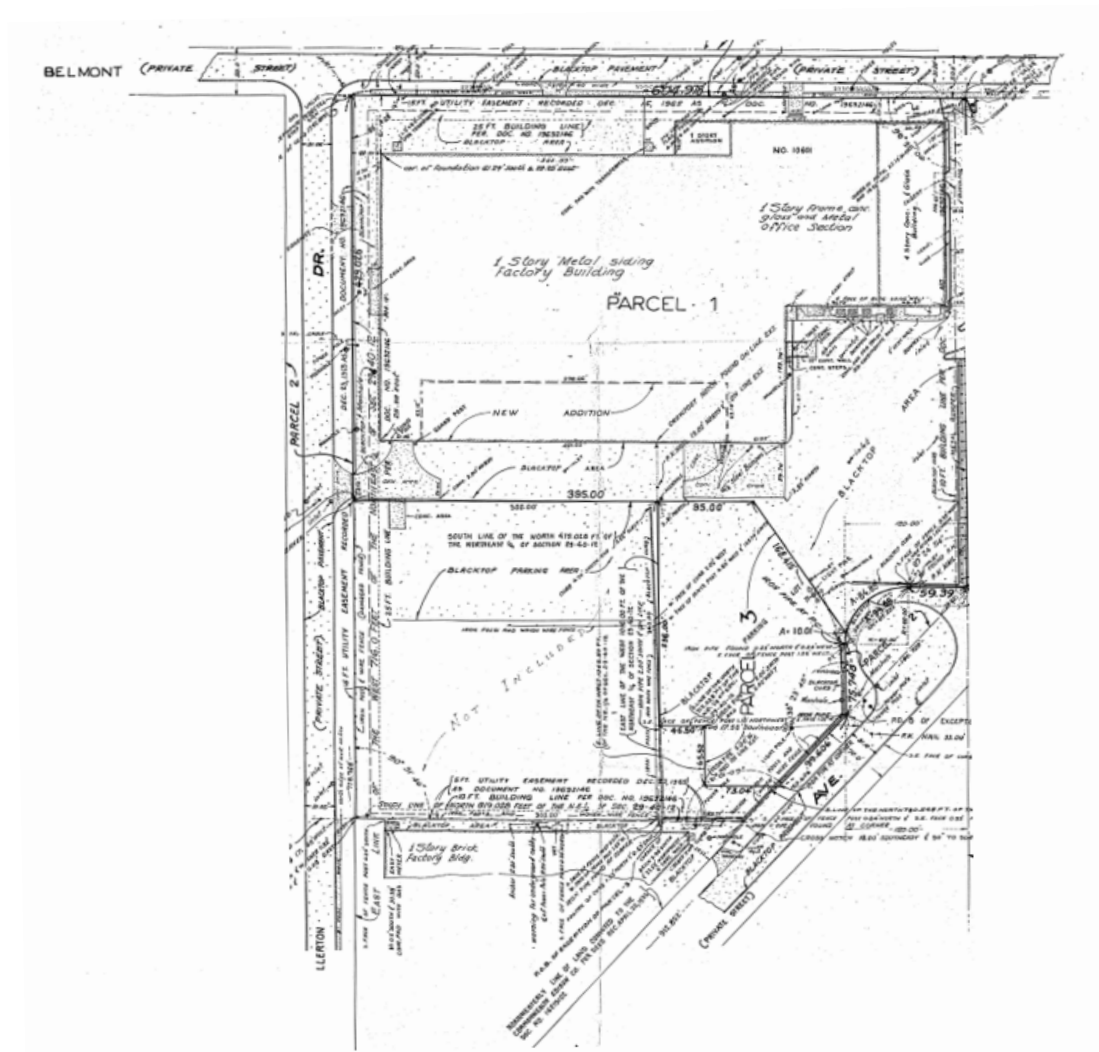
JORDAN ROVITO
Executive Director

+1 312 470 3839
jordan.rovito@cushwake.com



SITE PLAN

10601 BELMONT AVE • FRANKLIN PARK, IL



BRAD FRANK
Director

+1 312 470 3837
brad.frank@cushwake.com

AL CARUANA
Executive Managing Director

+1 847 720 1326
al.caruana@cushwake.com

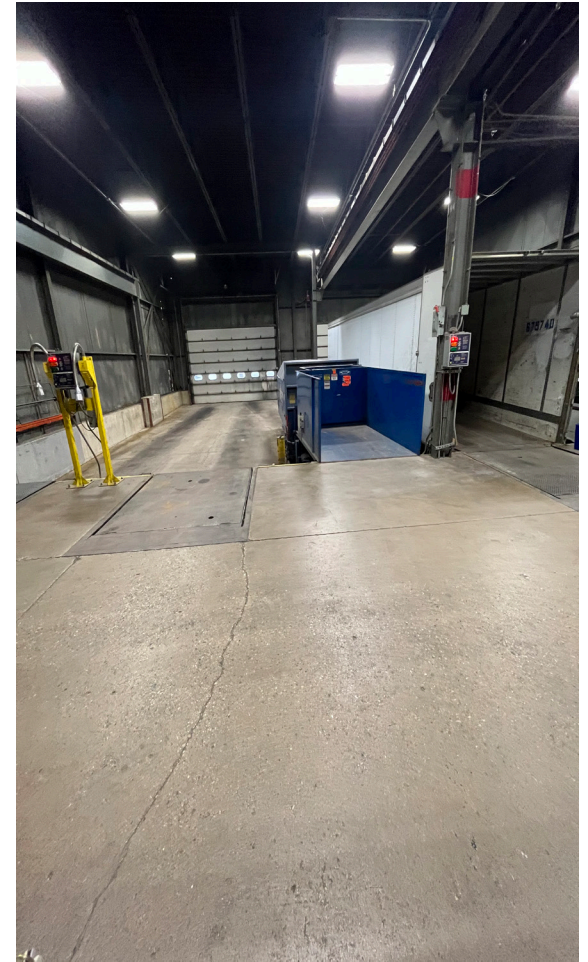
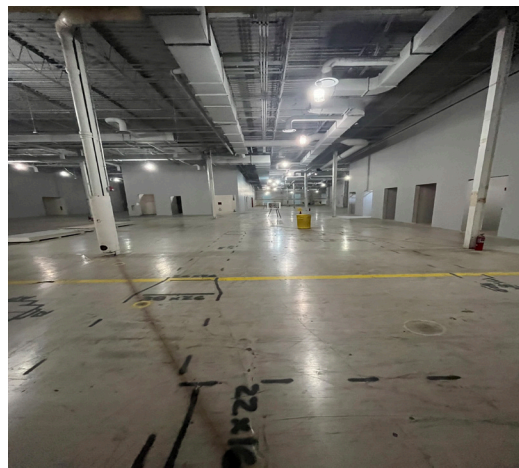
JORDAN ROVITO
Executive Director

+1 312 470 3839
jordan.rovito@cushwake.com



SPACE PHOTOS

10601 BELMONT AVE • FRANKLIN PARK, IL



BRAD FRANK
Director

+1 312 470 3837
brad.frank@cushwake.com

AL CARUANA
Executive Managing Director

+1 847 720 1326
al.caruana@cushwake.com

JORDAN ROVITO
Executive Director

+1 312 470 3839
jordan.rovito@cushwake.com

 **CUSHMAN &
WAKEFIELD**

30 Minutes to
Downtown Chicago

AERIAL MAP

10601 BELMONT AVE • FRANKLIN PARK, IL

10 Minutes to O'Hare
International Airport



BRAD FRANK
Director

+1 312 470 3837
brad.frank@cushwake.com

AL CARUANA
Executive Managing Director

+1 847 720 1326
al.caruana@cushwake.com

JORDAN ROVITO
Executive Director

+1 312 470 3839
jordan.rovito@cushwake.com





**BRAD
FRANK**

Director

+1 312 470 3837
brad.frank@cushwake.com



**AL
CARUANA**

Executive Managing Director

+1 847 720 1326
al.caruana@cushwake.com



**JORDAN
ROVITO**

Executive Director

+1 312 470 3839
jordan.rovito@cushwake.com