

**STOUT &
TEAGUE**

**10461 White Granite Drive
Oakton, Virginia 22124**



STOUT & TEAGUE

1616 P St. NW | Suite B-100
Washington, DC 20036

202-328-5136

Mollye Schneeberg, Director of Leasing

MSCHNEEBERG@STOUTANDTEAGUE.COM

Property

Beautiful Building Located In A Park-Like Setting

Owner Occupied

Full Service, Flexible Lease Terms

Minutes To The Vienna Metro Station And Just West Of The Beltway

Near The Oak Marr Golf, Recreation Center, And Oakton Shopping Center

Features

Fitness Center

Courtyard

Banking

Property Manager On-Site

Plenty Of Parking

Location

COMMUTER RAIL

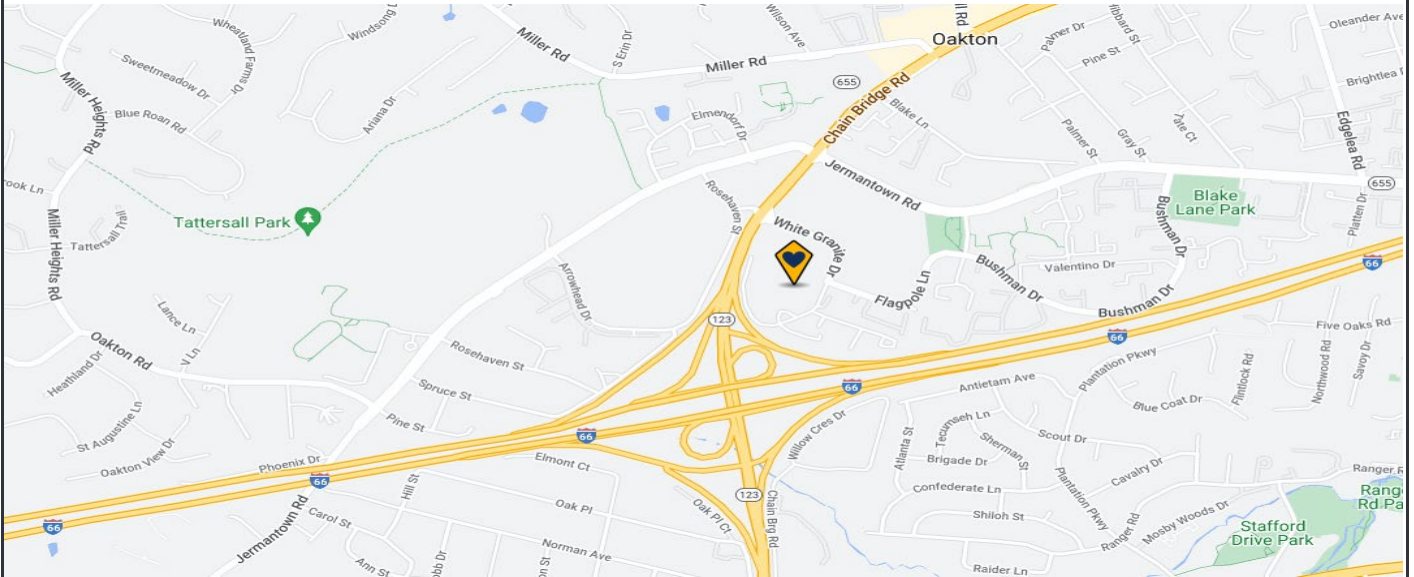
VRE - Burke Centre (Manassas Line).....6.8 mi.

VRE - Rolling Road (Manassas Line).....9.0 mi.

AIRPORTS

Washington Dulles International.....12.3 mi.

Ronald Reagan Washington National19.3 mi.



Suite 260

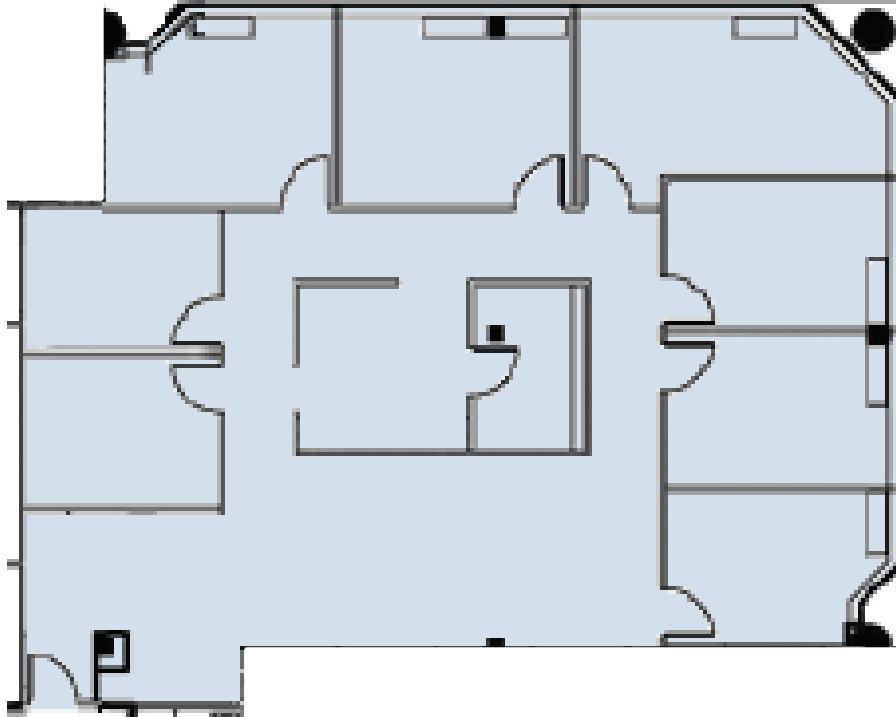
2nd Floor

2,710 RSF

Asking \$22.00 / RSF

Available: Vacant

Corner Office With Great Window Line - 7 Windowed Offices And Additional Interior Offices. Pantry And Reception Area.



STOUT & TEAGUE

1616 P St. NW | Suite B-100
Washington, DC 20036

202-328-5136

Mollye Schneeberg, Director of Leasing

MSCHNEEBERG@STOUTANDTEAGUE.COM