

Ponte Vedra Office For Lease



Overlook II - 50 A1A N Ponte Vedra Beach, FL 32082

- Lease Rate: \$28.00/SF NNN (plus electric and janitorial)
- CAM, Taxes and Insurance : \$8.50/SF
(CAM includes HVAC maintenance)
- Available Space: Suite 103: +/- 1,425 SF
* Available February 1, 2020
- Built out as medical office
- Building has ample parking and great visibility from A1A.
- Exterior Building Signage available.
- Class A Ponte Vedra Office located on A1A.
- Located within the prominent Ponte Vedra Lakes Professional Park in North Ponte Vedra Beach, just South of JT Butler Blvd.

For additional
information contact:

John Clifford
john@strategicsites.com

Or

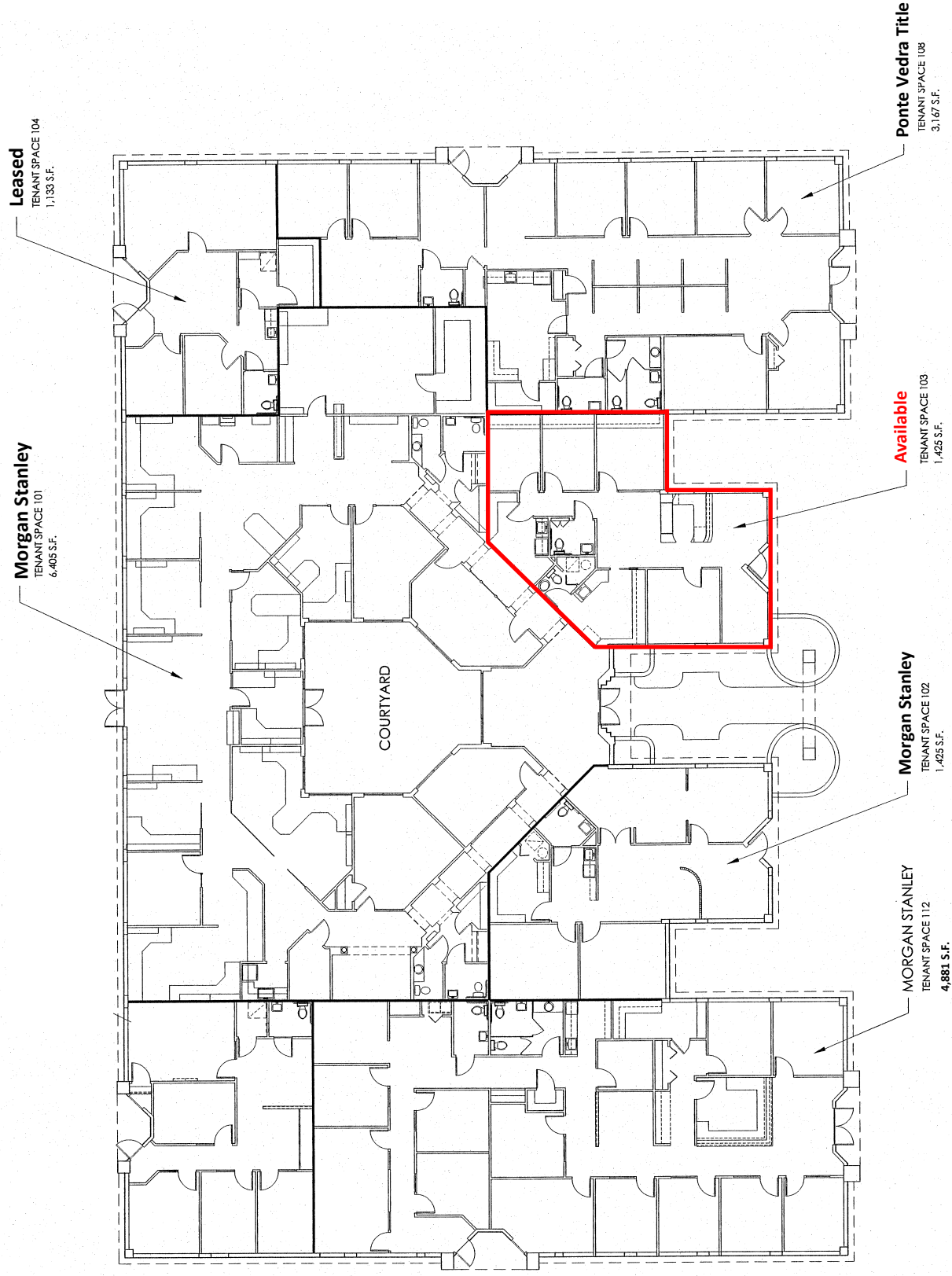
Kate Clifford
kate@strategicsites.com

422 Jacksonville Drive, Jacksonville Beach, FL ~ 904-242-2828 ~ www.strategicsites.com

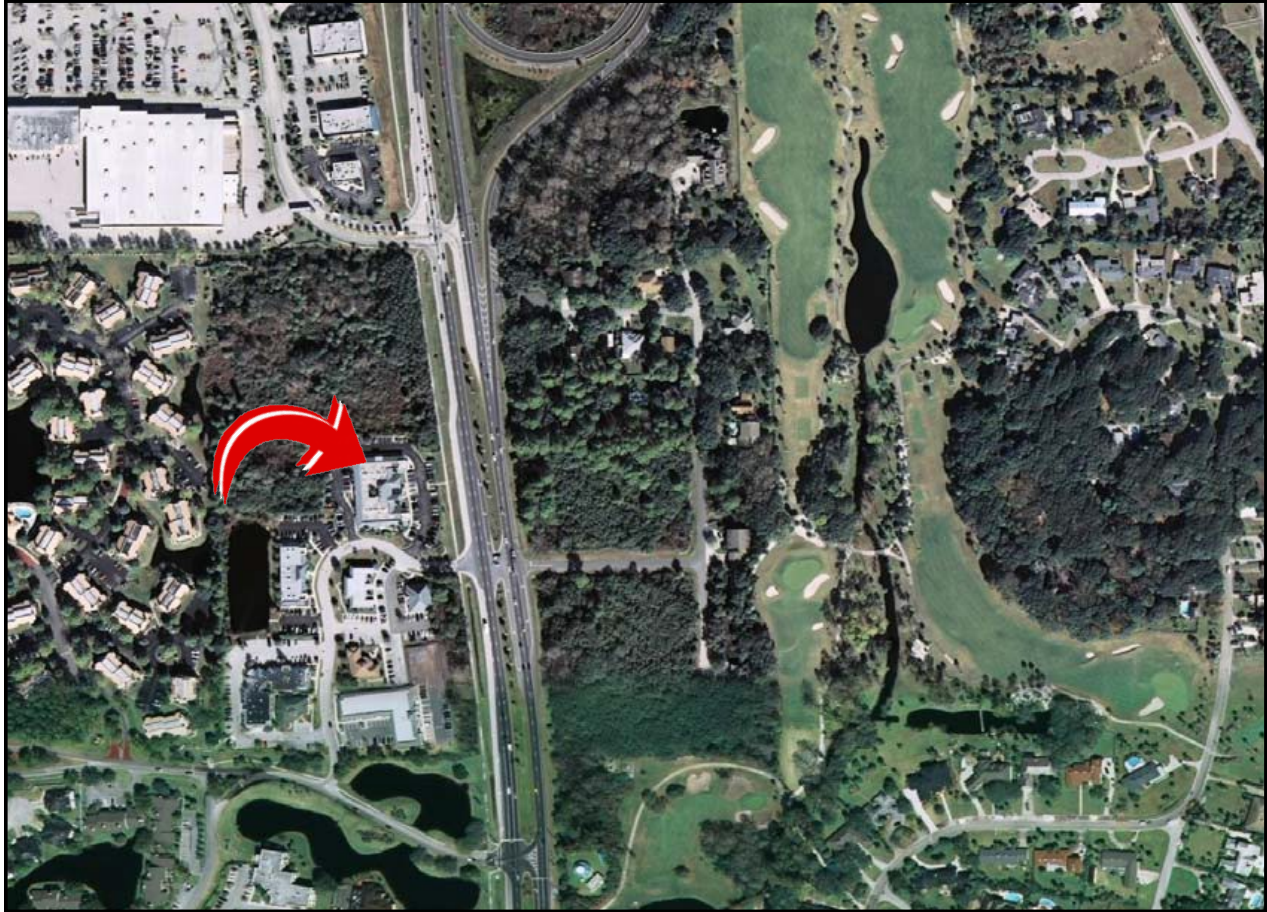
Client First through Service, Knowledge and Integrity

Notice of Disclaimer: Details contained herein are believed to be correct: the information is subject to errors, omissions, price changes, or withdrawal without notice.

Floor Plan



Location Map & Aerial



422 Jacksonville Drive, Jacksonville Beach, FL ~ 904-242-2828 ~ www.strategicsites.com

Client First through Service, Knowledge and Integrity

Notice of Disclaimer: Details contained herein are believed to be correct: the information is subject to errors, omissions, price changes, or withdrawal without notice.