

# LOFT FEATURES

Unique live-work opportunity  
 Nearly 4,000 sq. ft. of open space without columns  
 16-foot high ceilings  
 Video security throughout  
 Keyed elevator entrance  
 Three full bathrooms  
 325 sq ft open mezzanine with 7.2-foot high ceiling  
 Ample storage  
 Central air conditioning  
 Custom chef's kitchen equipped with top-tier stainless steel appliances  
 600-bottle individually refrigerated wine storage  
 2 video Projector with motorized screen  
 Low Monthly expenses  
 Customized Crestron technology controls temperature, lighting, music, audio/video, and window blinds.

**\$5.5M**  
 Co-op  
 \$7,193  
 Monthly Maintenance  
 3,900 SqFt  
 16'  
 Ceiling Heights  
 3 Baths



**SOHO**  
**519**  
**BROADWAY**  
**2<sup>ND</sup> FLOOR**

Meticulously renovated by a renowned architect, this live/work gallery space occupies the entire second floor of a New York City historic six-story cast-iron building from 1884, celebrated as a National Historic Landmark.

**LIVE  
WORK  
LOFT**  
**3,900 SqFt**



SCAN  
FOR  
VIRTUAL  
TOUR +  
VIDEO



**SOHO**  
**519**  
**BROADWAY**  
**2<sup>ND</sup> FLOOR**

**Monica Luque**  
 Licensed Associate Real Estate Broker  
 monica.luque@elliman.com  
 M: 347.302.4988  
 www.LuqueTeam.com





# LIVE WORK LOFT 3,900 SqFt

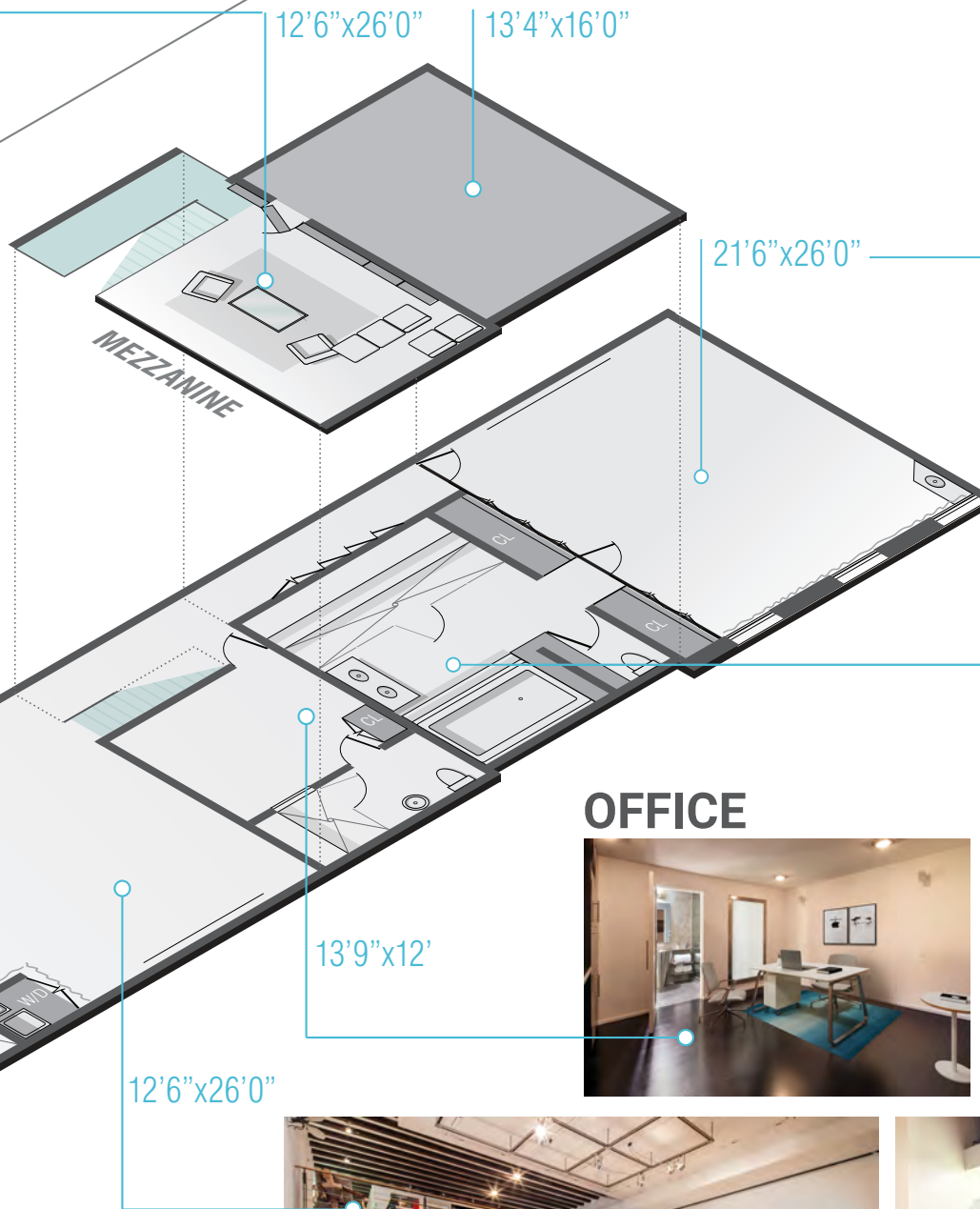
MEZZANINE



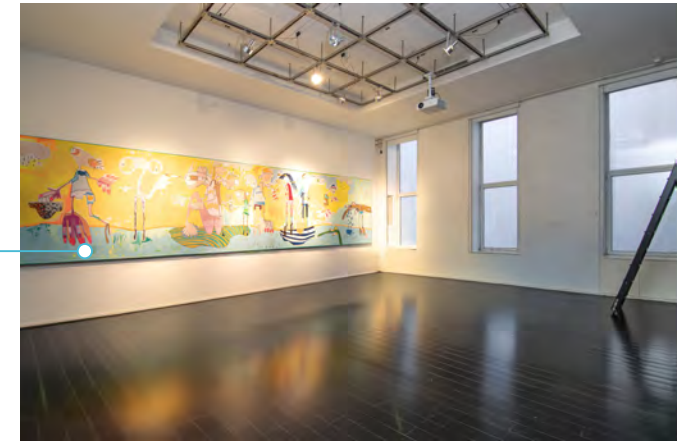
LIVING



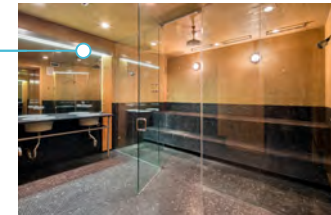
KITCHEN



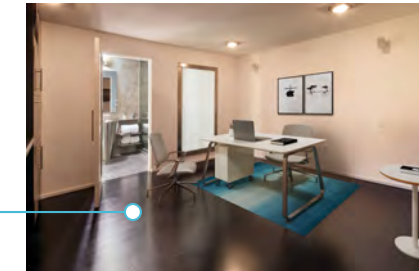
ROOM



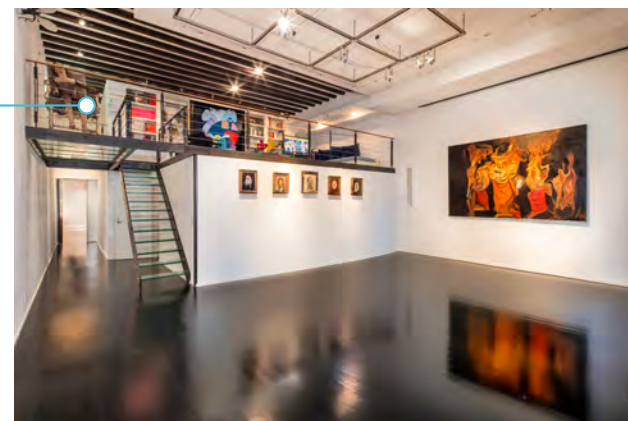
SPA-JACUZZI



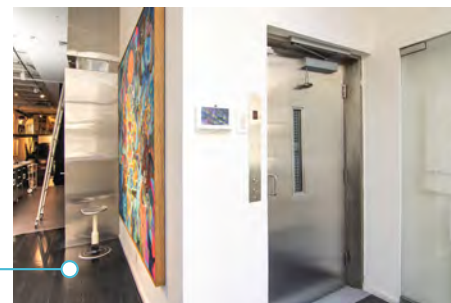
OFFICE



ROOM



WD



DIRECT ELEVATOR

EMERGENCY EXIT

PRIVATE ELEVATOR

H: 15'10"

65'0" x 20'2"

BROADWAY

**SOHO**  
**519**  
**BROADWAY**  
**2<sup>ND</sup> FLOOR**  
**Monica Luque**  
Licensed Associate Real Estate Broker  
monica.luque@elliman.com  
M: 347.302.4988  
www.LuqueTeam.com

LUQUE TEAM AT Douglas Elliman