

FOR LEASE

1901 Frank Scott Parkway Shiloh, Illinois

■ CHOOSEKWG.COM ■ CHOOSEKWG.COM ■ CHOOSEKWG.COM ■



OFFICE/ MEDICAL SPACE

- 932 RSF
- Built in 2005
- Monument Signage Available
- Close to I-64 & Green Mount Road
- Located between Memorial East Hospital and St. Elizabeth's Hospital
- 5 Minutes from SAFB, 15 Minutes to downtown St. Louis and 30 Minutes from Lambert Airport
- Professionally Managed Building
- **Lease Rate: \$15.00 PRSF plus NNN \$5.50**

EXPERIENCE... DEDICATION... RESULTS

For information, contact:

DAVE KUNKEL

DAVE@CHOOSEKWG.COM
618-977-1846 Mobile

KELLY HULVEY

KELLY@CHOOSEKWG.COM
618-210-4702 Mobile

LUKE ALLAN

LUKE@CHOOSEKWG.COM
618-578-3598 Mobile

**Kunkel Commercial Group 3318 N IL, Swansea, IL 62226
618-202-4500 Office**

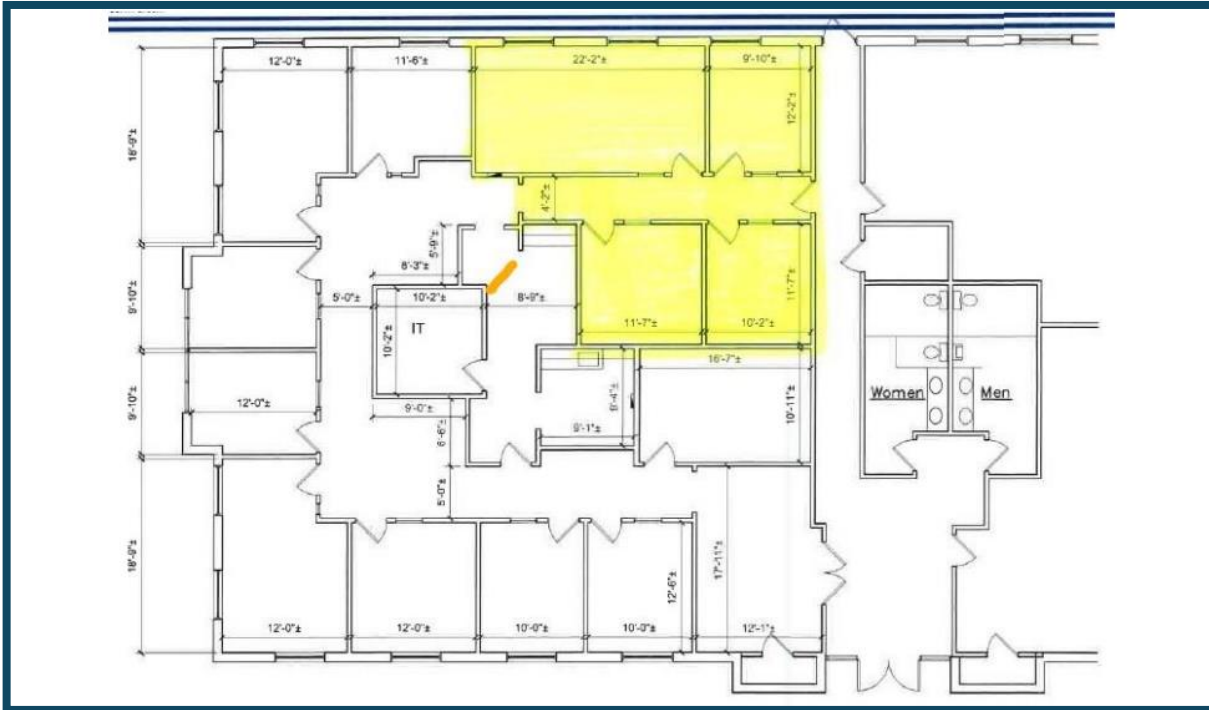


Information herein is not warranted and subject to change without notice. We assume no liability for errors on items included in quoted price. Broker makes no representation as to the environmental condition of property and recommends Purchaser's / Tenant's independent investigation.

FLOOR PLAN

1901 Frank Scott Parkway
Shiloh, Illinois

■ CHOOSEKWG.COM ■ CHOOSEKWG.COM ■ CHOOSEKWG.COM ■



932 RSF Available
See Highlighted Area

For information, contact:

DAVE KUNKEL

DAVE@CHOOSEKWG.COM
618-977-1846 Mobile

KELLY HULVEY

KELLY@CHOOSEKWG.COM
618-210-4702 Mobile

LUKE ALLAN

LUKE@CHOOSEKWG.COM
618-578-3598 Mobile

Kunkel Commercial Group 3318 N IL, Swansea, IL 62226
618-202-4500 Office

