

MRC

boost



For Lease

472 Fulton St

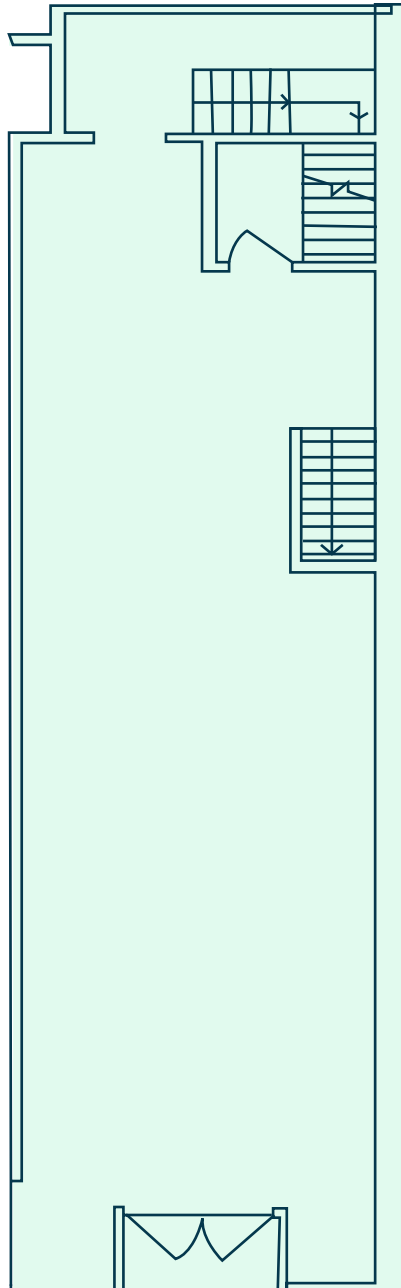
High Foot Traffic Retail For Lease

1,400 sq ft | 472 Fulton St | Brooklyn, NY 11201

VI

FLOOR PLAN

472 Fulton St, Brooklyn, NY 11201



OVERVIEW

- **Address:** 472 Fulton St, Brooklyn, NY 11201
- **Cross Streets:** Elm Place and Hoyt Street
- **Neighborhood:** Downtown Brooklyn

SPACE DETAILS

- **Size:** 1,400 sq ft
- **Ceiling Height:** 12 ft
- **Frontage:** 15 ft
- **Zoning:** C5-4, DB

HIGHLIGHTS

- 13 Subway lines in the immediate area
- Glass storefront
- Existing gas line
- Lower level space for storage

TRANSPORTATION

- 5 min walk to B41, 3 min walk to B45
- 2 min walk to train A, 5 min walk to train D
- 20 min drive to LGA, 37 min drive to JFK, 34 min drive to EWR

DEMOGRAPHICS

- **Population:** 168,031
- **Median Household Income:** \$128,482
- **Median Home Value:** \$1,047,112

NEIGHBORS

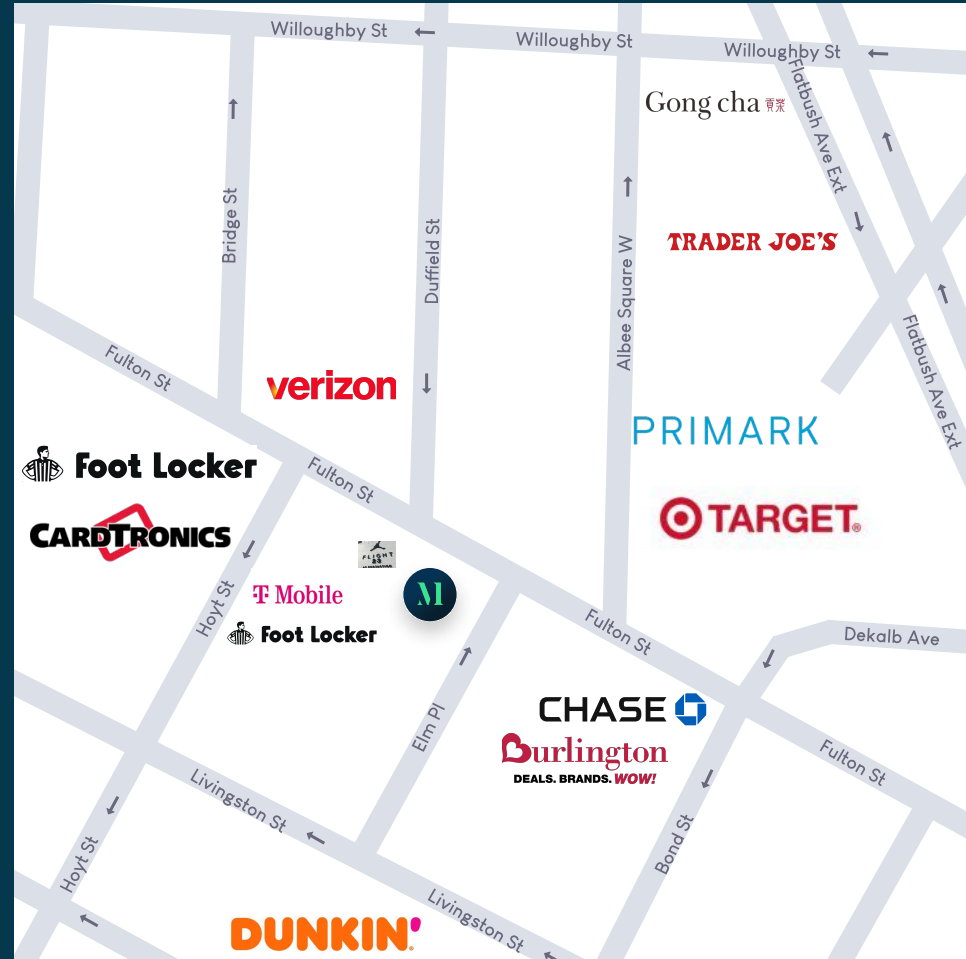
Dunkin', Verizon, Foot Locker, Target, Primark, Burlington, Chase Bank, T-Mobile, Cardtronics, Gong Cha, Trader Joe's

MRG

472 Fulton St Brooklyn, NY 11201

FOR MORE INFORMATION
PLEASE CONTACT:

MOSHE AKIVA
212-314-4684 Ext.103
Moshe@mrgny.com



High Foot Traffic Retail For Lease