

# 848 S BERETANIA STREET

Honolulu, Hawaii 96813

## FOR LEASE

Office Space



## PROPERTY DESCRIPTION

Located along the highly visible Beretania Street corridor, Hawaii Opera Plaza is a well-maintained four-story mixed-use commercial property offering a unique blend of professional office, medical, and performing arts space. Situated near the Ward area and just minutes from Downtown Honolulu, the property enjoys exceptional street frontage, convenient accessibility, and strong visibility.

The building features approximately 48,000 square feet of office and mixed-use space, with a performing arts studio on the ground floor and professional office suites on the upper levels. Property amenities include customer parking on the ground level, dedicated tenant parking, elevator access, and flexible office configurations suitable for medical, professional, or administrative uses.

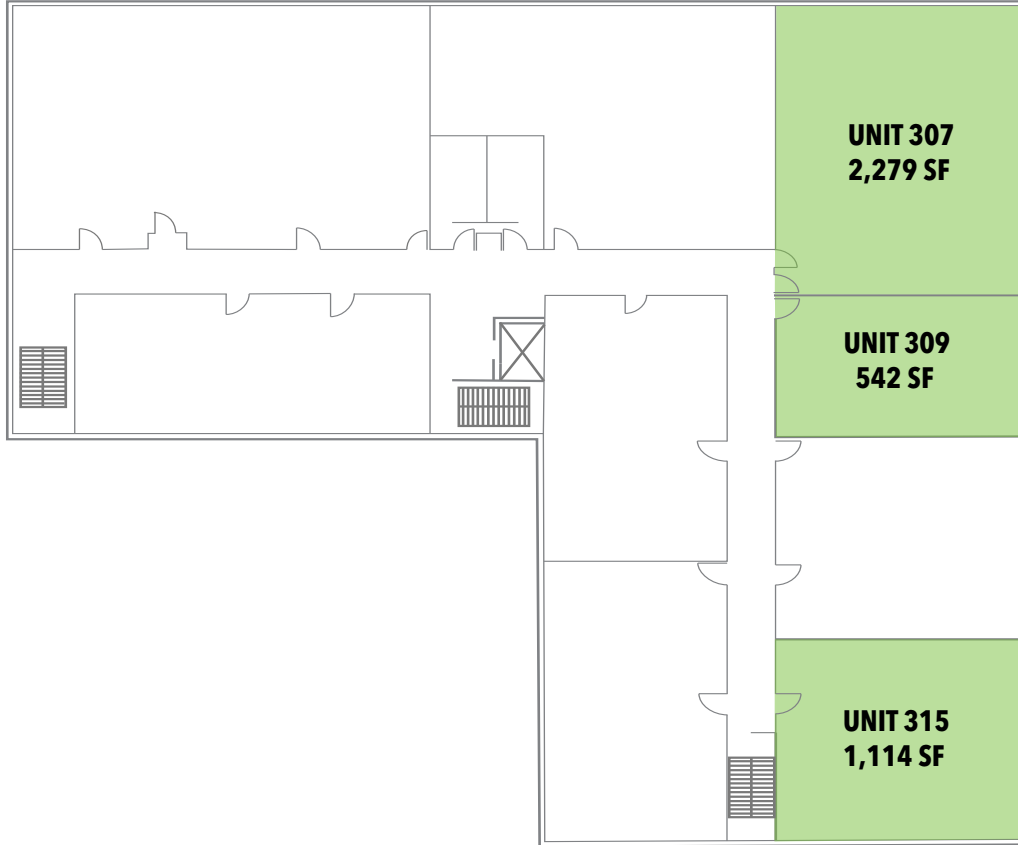
## PROPERTY SNAPSHOT

Location:	Downtown
Property Type:	Office
TMK:	(1) 2-1-041-002
<u>Space Available:</u>	<u>Size:</u>
Unit 307	2,279 SF
Unit 309	542 SF
Unit 315	1,114 SF
Unit 402	686 SF
Unit 408	1,221 SF
Rent:	\$1.65 / SF / Month
CAM:	\$2.06 / SF / Month
Zoning:	BMX-3

©2026 Sofos Realty Corporation. All information contained herein is obtained from sources deemed reliable. However, no representations or guarantees are made as to the accuracy thereof, and it is provided herein subject to errors, omissions, changes and withdrawals without notice. Offeror and/or his agent should confirm this information prior to making any offer. Buyer agrees that all negotiation shall be conducted through Sofos Realty Corporation only. No subagency is offered or intended.

 **SOFOS REALTY**  
CORPORATION  
Commercial Brokerage • Property Management

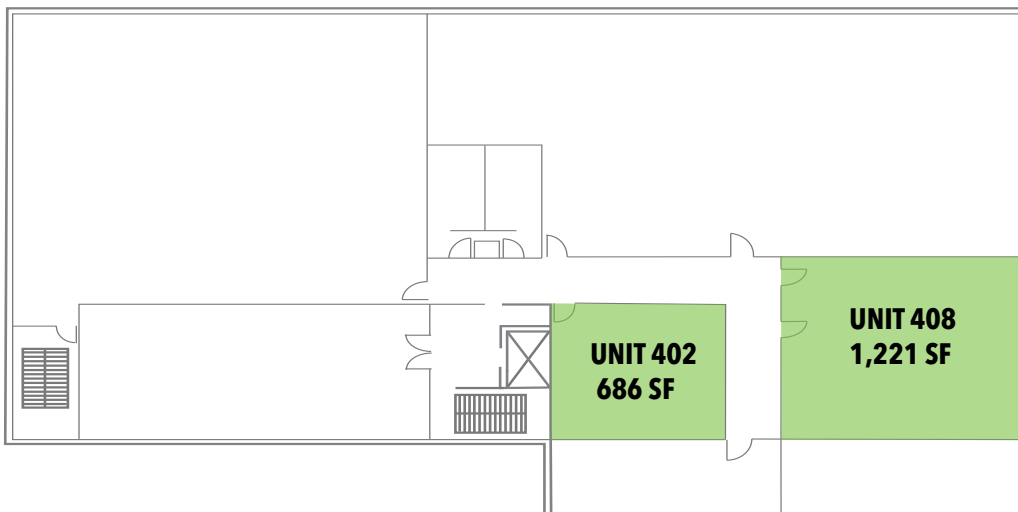
# FLOOR PLAN



## THIRD FLOOR

### AVAILABILITY

Unit	Size
Suite 307	2,279 SF
Suite 309	542 SF
Suite 315	1,114 SF



## FOURTH FLOOR

### AVAILABILITY

Unit	Size
Suite 402	686 SF
Suite 408	1,221 SF

*Floor Plans are for marketing purposes only and may not accurately reflect the property.*

**Mason Bland (S)**

Associate

RS-88397

(808) 522-5968

[mbland@sofosrealty.com](mailto:mbland@sofosrealty.com)

**Nathan Sato (S)**

Associate

RS-86787

(808) 532-1929

[nsato@sofosrealty.com](mailto:nsato@sofosrealty.com)