

# W. HOLLY HILL RD.

THOMASVILLE, NC

**65 ACRES  
RESIDENTIAL**

PRIME DEVELOPMENT  
OPPORTUNITY

FOR SALE



# PROPERTY

*info*

---

Address W. Holly Hill Road, Thomasville

---

Acreage +/- 65 Acres

---

Zoning R-8 & R-10

---

Traffic I-85 Traffic Counts 61,000+ in Front of Site

---

Water/Sewer At or Close to the Property Lines

---

**PRICE: \$4,850,000**

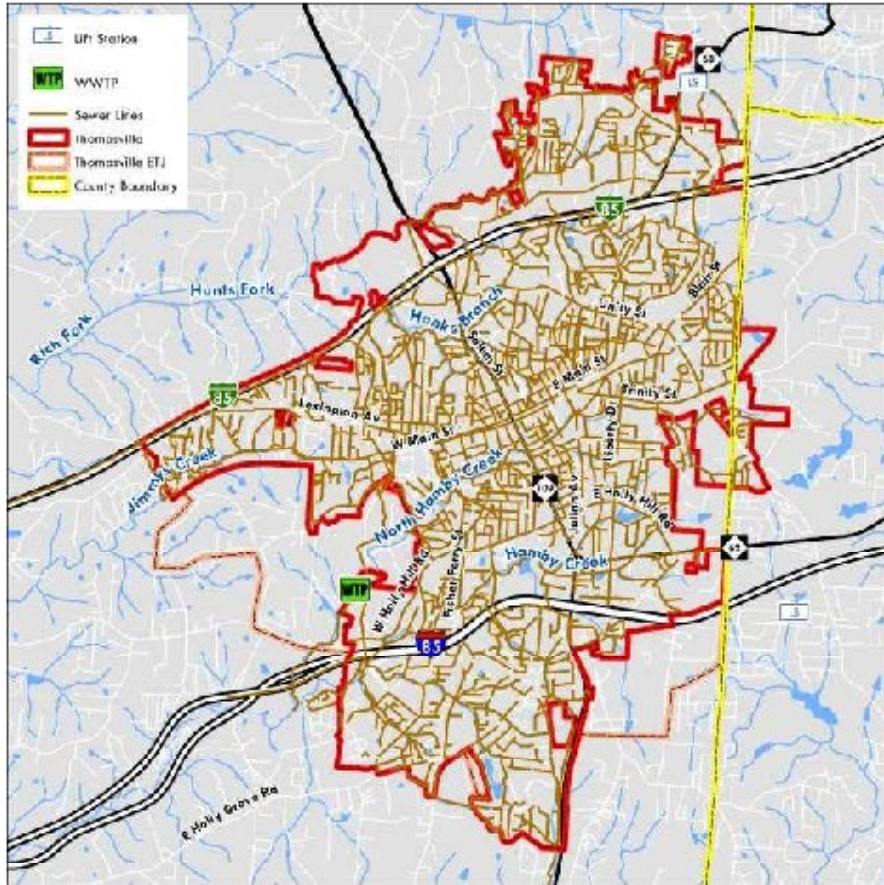
# PROPERTY *info*



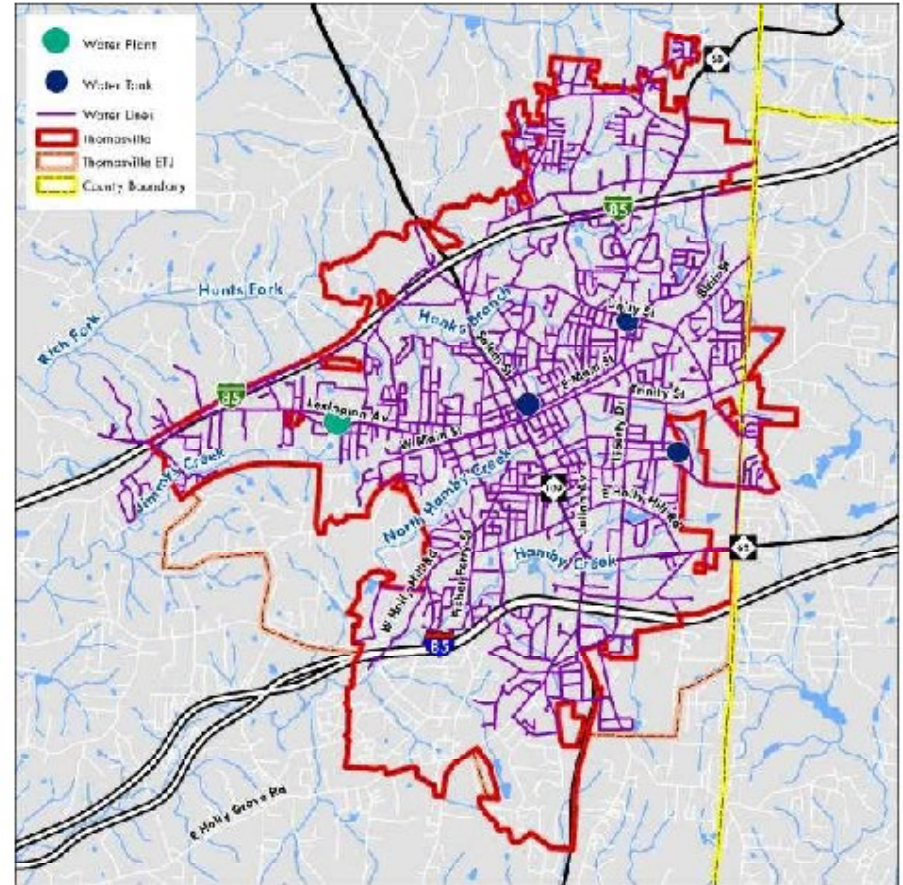


# SEWER & WATER *infrastructure*

Map 10: Sewer Infrastructure



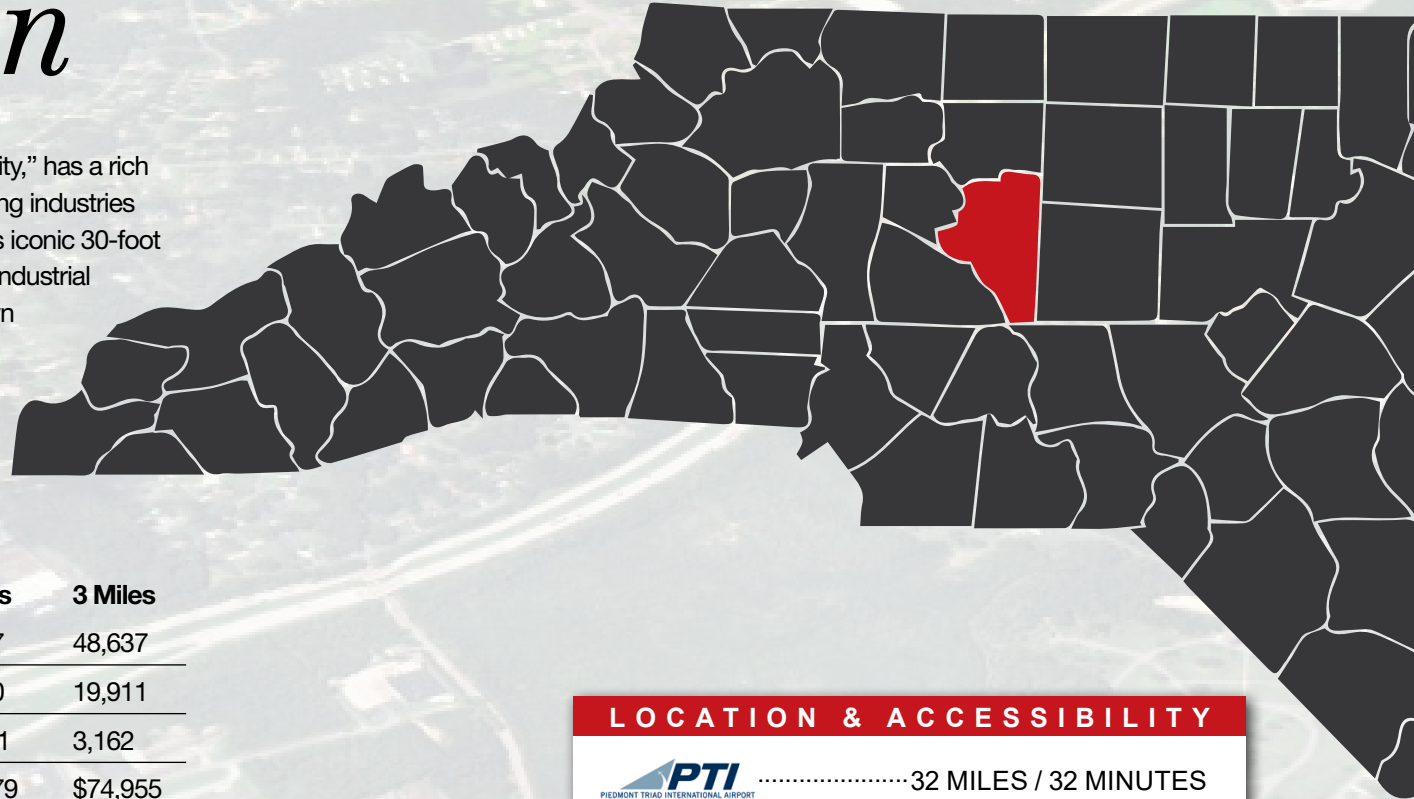
Map 9: Water Infrastructure



# THOMASVILLE

## *information*

Thomasville, North Carolina, often dubbed the “Chair City,” has a rich heritage rooted in the railroad and furniture manufacturing industries since its founding in the 1850s. The city is famous for its iconic 30-foot tall replica of a Duncan Phyfe armchair, symbolizing its industrial past. Today, Thomasville maintains its historic downtown and hosts popular annual events like the oldest running street festival in the state, “Everybody’s Day,” and a large Memorial Day Parade. Located in Davidson County, it offers a blend of small-town charm with proximity to the larger Piedmont Triad cities.



	1 Mile	2 Miles	3 Miles
Population	5,286	30,007	48,637
Households	2,182	12,430	19,911
Families	1,302	7,909	3,162
Average Household Income	\$53,691	\$70,179	\$74,955

**LOCATION & ACCESSIBILITY**

 ..... 32 MILES / 32 MINUTES  
PIEDMONT TRIAD INTERNATIONAL AIRPORT

 ..... 71.9 MILES / 69 MINUTES  
CHARLOTTE DOMIGLAS INTERNATIONAL AIRPORT




**WINSTON-SALEM, NC**  
 ±21 Miles From Site (34 Mins)




**GREENSBORO, NC**  
 ±25 Miles From Site (29 Mins)




**CHARLOTTE, NC**  
 ±70 Miles From Site (67 Mins)



**NAI Piedmont Triad**  
Commercial Real Estate Services, World Wide

**BROKERAGE  
DEVELOPMENT  
INVESTMENTS**

FOR MORE INFORMATION, CONTACT:

**WILL BLACKWELL, SIOR**  
BROKER  
(O) 336.901.3452  
(C) 336.345.1500  
wblackwell@naipt.com

250 West First Street • Winston-Salem, NC 27101 • [naipt.com](http://naipt.com)

