



FOR LEASE

Class A Office Building in North Charleston's Executive Park at Faber Place

4000 Faber Place Drive, North Charleston, SC 29405

Reid Davis, CCIM, SIOR

Managing Director
+1 843 277 4326
reid.davis@colliers.com

Pete Harper, CCIM

Principal
+1 843 329 0108
pete.harper@colliers.com

Cameron Yost, CCIM, SIOR

Principal
+1 843 203 1105
cameron.yost@colliers.com



Property Summary

The Faber Centre is located in the Executive Park at Faber Place off of Leeds Avenue in North Charleston. This four-story Class A office building is just minutes from Centre Pointe amenities, Boeing and the Charleston International Airport.

Address 4000 Faber Place Drive
North Charleston, SC 29405

Available

Suite 215 ±2,359 SF	*Second floor suites are contiguous totaling ±6,621 SF
Suite 220 ±3,083 SF	
Suite 225 ±1,179 SF	
Suite 320 ±4,410 SF	
Suite 450 ±12,647 SF	

Amenities Conference room and common break area located on the first floor

Parking Ample surface parking

TMS # 410-00-00-033



Class A Building

Four-story modern building



Surrounding Amenities

Tanger Outlets and breweries



Desirable Location

Direct access to Interstate 526

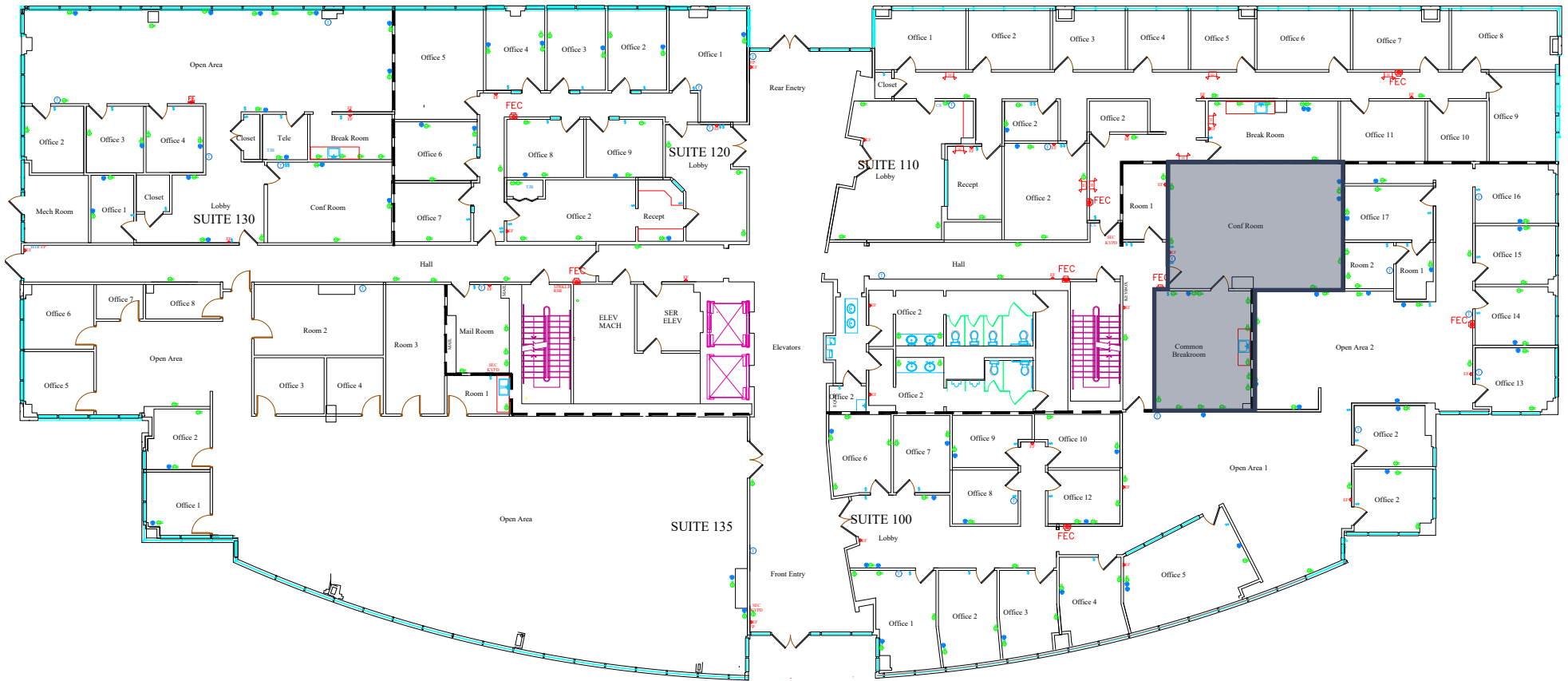
Lease rate: \$27.00/SF Full Service



CONFERENCE ROOM & BREAK ROOM

First Floor

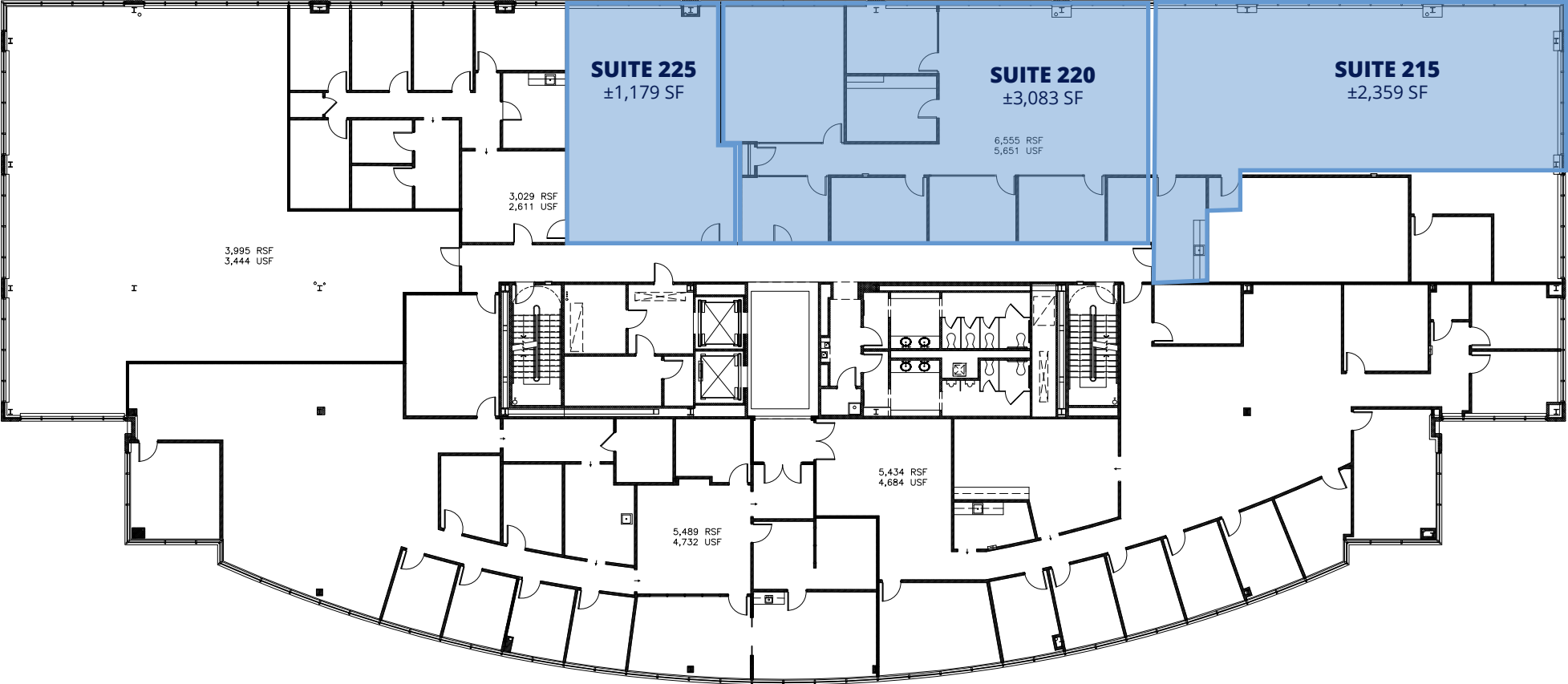
*First floor offers a shared conference room and break room



AVAILABLE SUITES

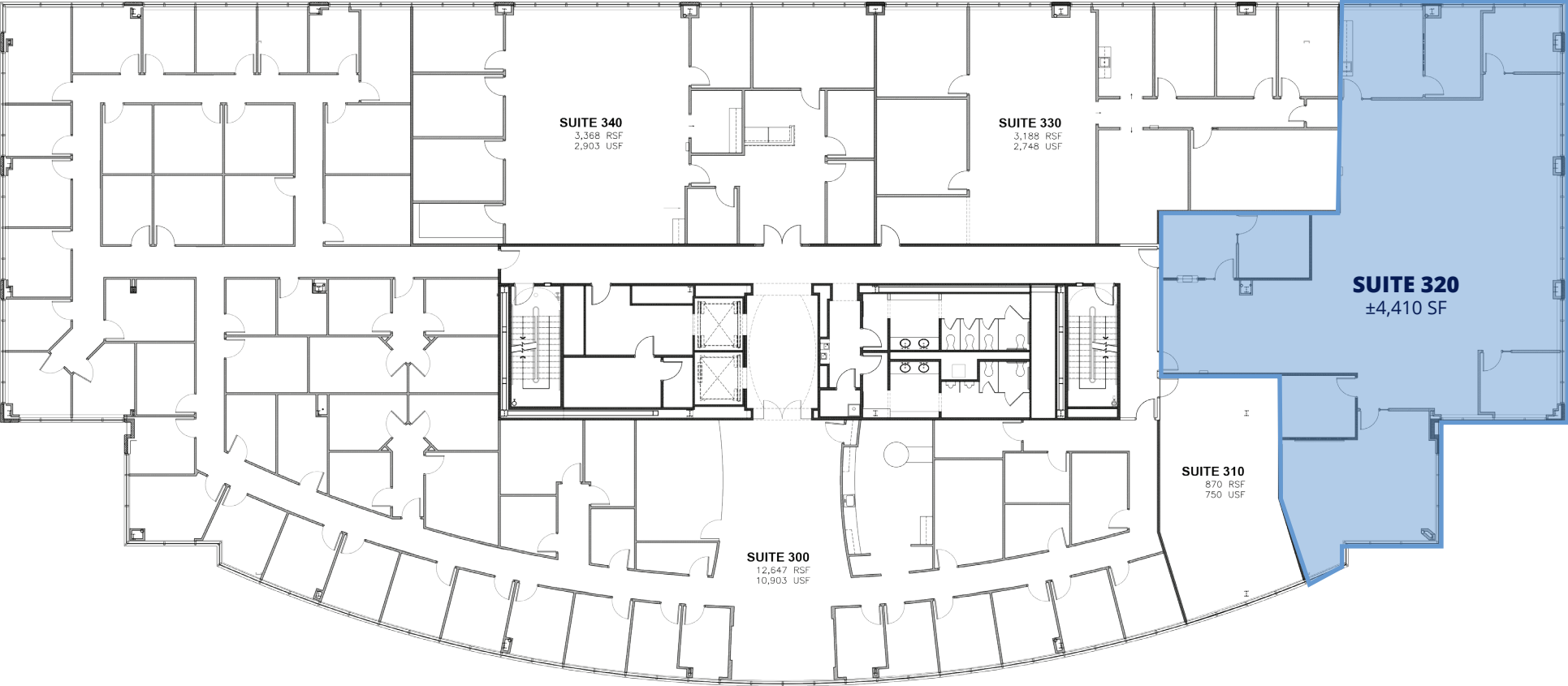
Second Floor

*Suite 215, 220 and 225 can be combined for a total ±6,621 SF



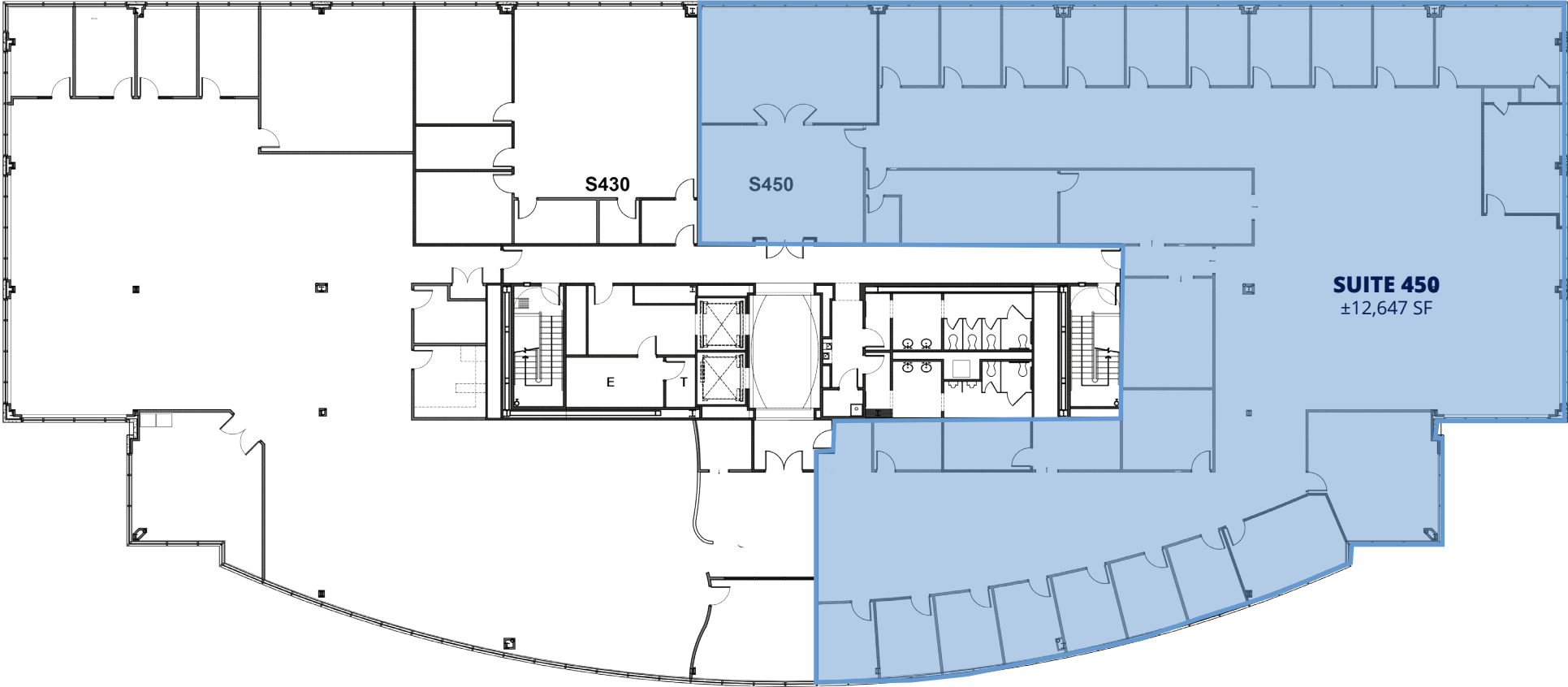
AVAILABLE SUITES

Third Floor

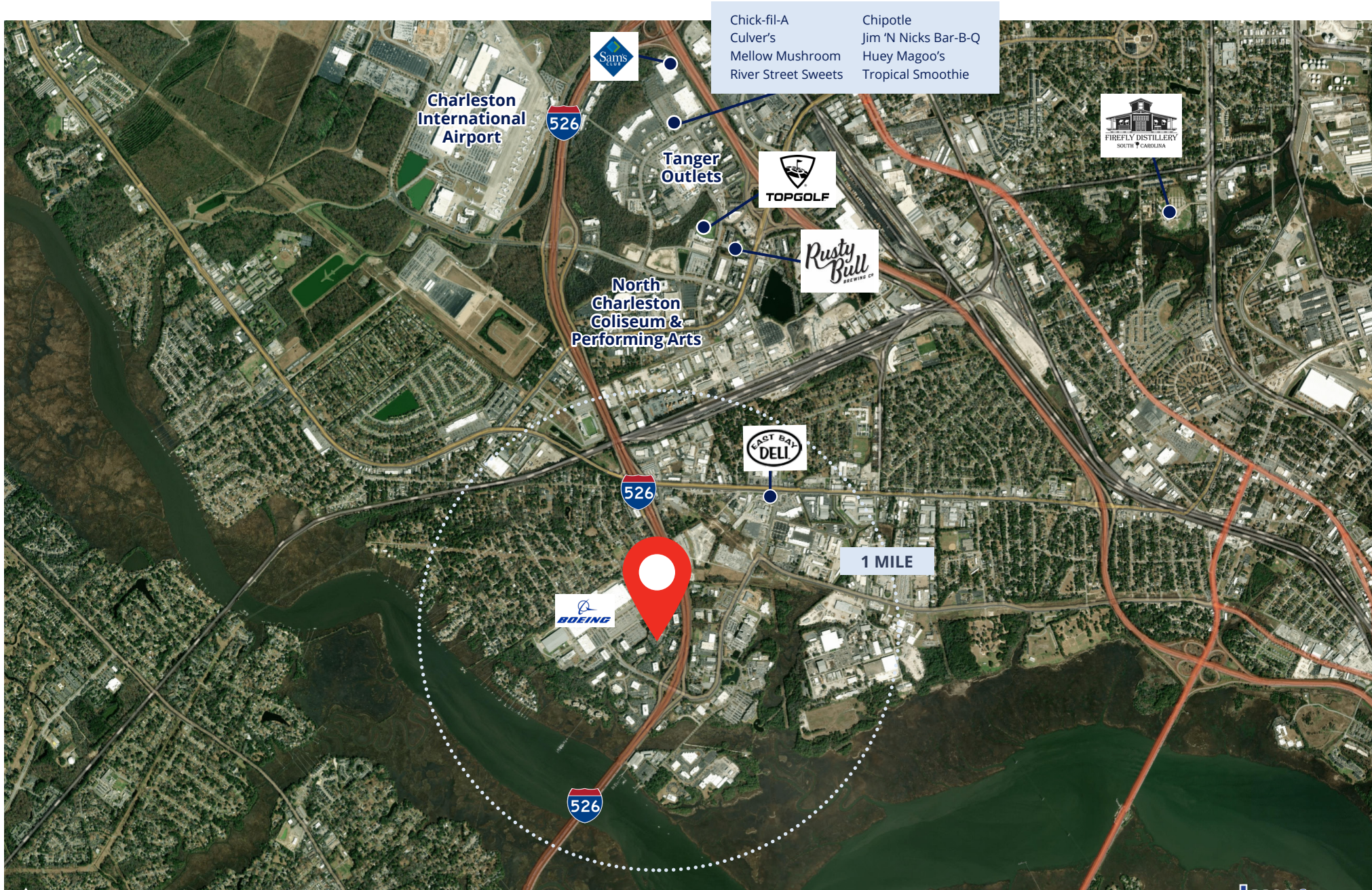


AVAILABLE SUITES

Fourth Floor



Market Overview



CONTACT

Reid Davis, CCIM, SIOR

Managing Director
+1 843 277 4326
reid.davis@colliers.com

Pete Harper, CCIM

Principal
+1 843 329 0108
pete.harper@colliers.com

Cameron Yost, CCIM, SIOR

Principal
+1 843 203 1105
cameron.yost@colliers.com



Colliers | South Carolina

960 Morrison Drive, Ste 400
Charleston, SC 29403
+1 843 747 1200

Copyright © 2026 Colliers International. Information herein has been obtained from sources deemed reliable, however its accuracy cannot be guaranteed. The user is required to conduct their own due diligence and verification.



4000 FABER PLACE DRIVE
North Charleston, SC 29404

DRIVE TIMES

West Ashley	±5 min
CHS International Airport	±4 min
Mount Pleasant	±18 min
Downtown Charleston	±15 min
Daniel Island	±18 min
Summerville	±20 min