

CHERRY LAUREL DRIVE OFFICE SPACE | FOR LEASE

2043 CHERRY LAUREL DR, SPRING, TX 77386



Property Description

Discover a new to market and versatile leasing opportunity at this exceptional property. This location offers the perfect canvas for creating a professional yet inviting environment. The property features 3-4 Offices, Full Kitchen w/ Break Room, 2 Full Bathrooms, large yard and Storage Shed. Enjoy the convenience of nearby amenities and a well-maintained, professional atmosphere, suitable for a variety of businesses. With its prime location and a focus on functionality and aesthetics, this property is an ideal choice for those seeking a distinctive and adaptable space to thrive in.

Property Highlights

- Great Location w/ close proximity to retail, restaurants, and banking
- New Updated at the end of 2025
- 3-4 Offices / Full Kitchen / 2 Full Baths / Large Yard / Storage Shed

Offering Summary

Lease Rate:	\$17.91 SF/yr (NNN)
Number of Units:	1
Available SF:	2,680 SF
Lot Size:	29,868 SF
Building Size:	2,680 SF

Demographics	0.3 Miles	0.5 Miles	1 Mile
Total Households	216	929	3,128
Total Population	607	2,780	9,517
Average HH Income	\$87,008	\$90,829	\$93,450

FOR MORE INFORMATION:


RON BROWN

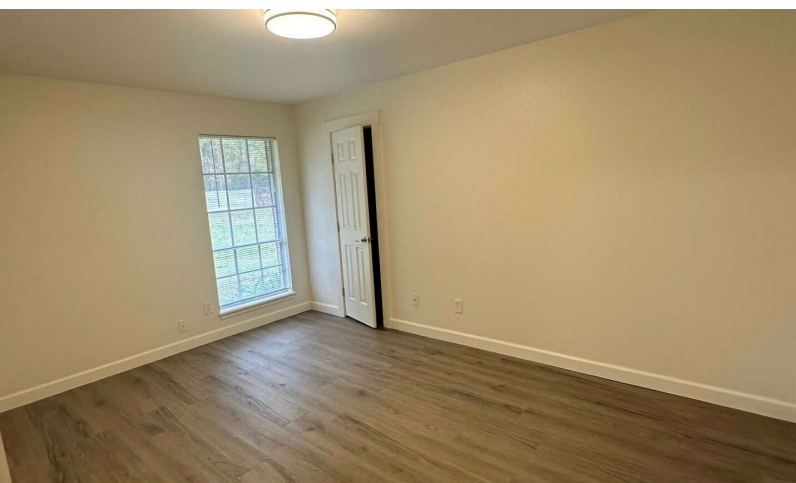
PRINCIPAL

936.689.7228

RON@TX-CRG.COM

CHERRY LAUREL DRIVE OFFICE SPACE | FOR LEASE

2043 CHERRY LAUREL DR, SPRING, TX 77386



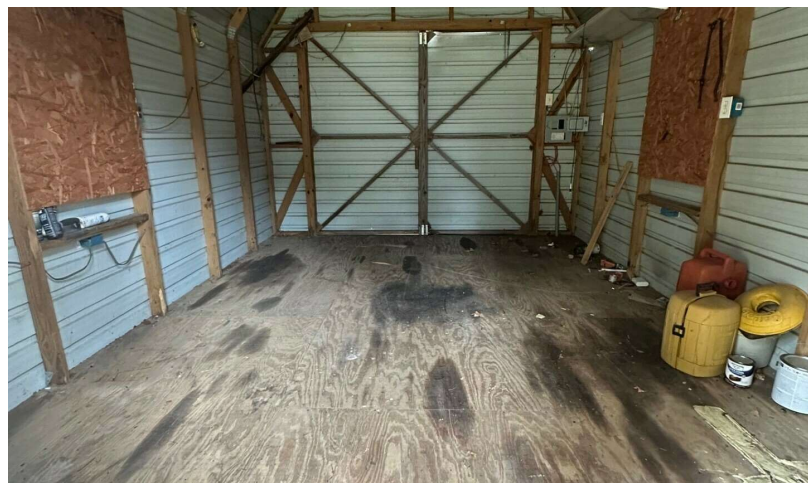
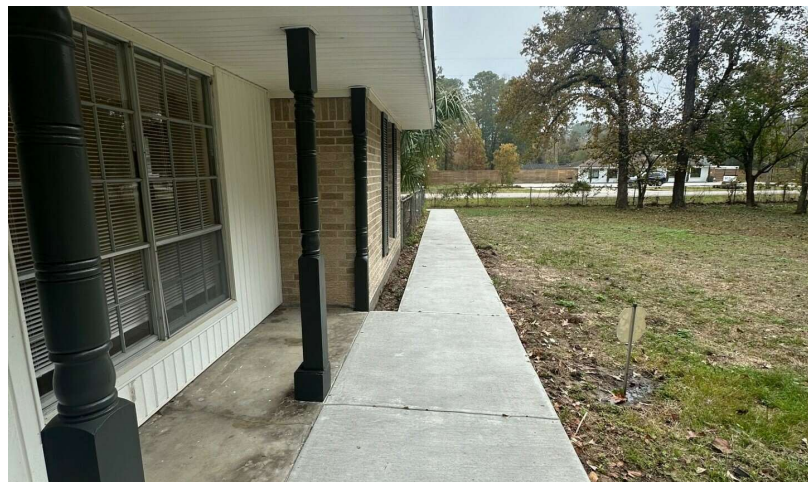
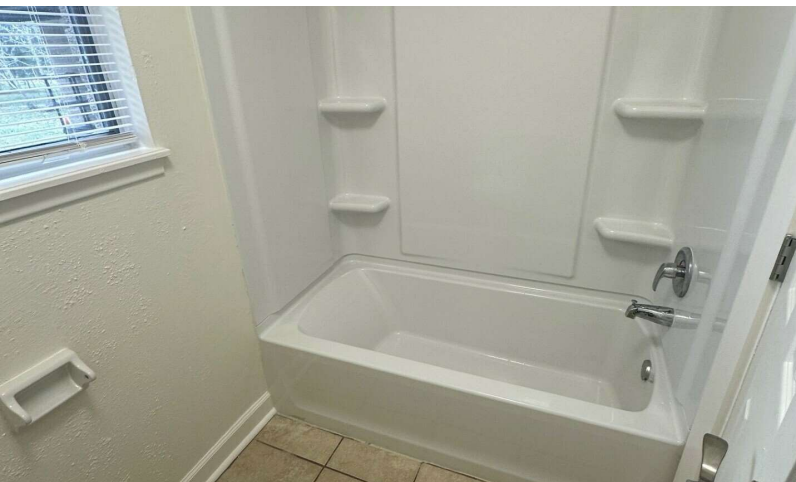
FOR MORE INFORMATION:



RON BROWN
PRINCIPAL
936.689.7228
RON@TX-CRG.COM

CHERRY LAUREL DRIVE OFFICE SPACE | FOR LEASE

2043 CHERRY LAUREL DR, SPRING, TX 77386



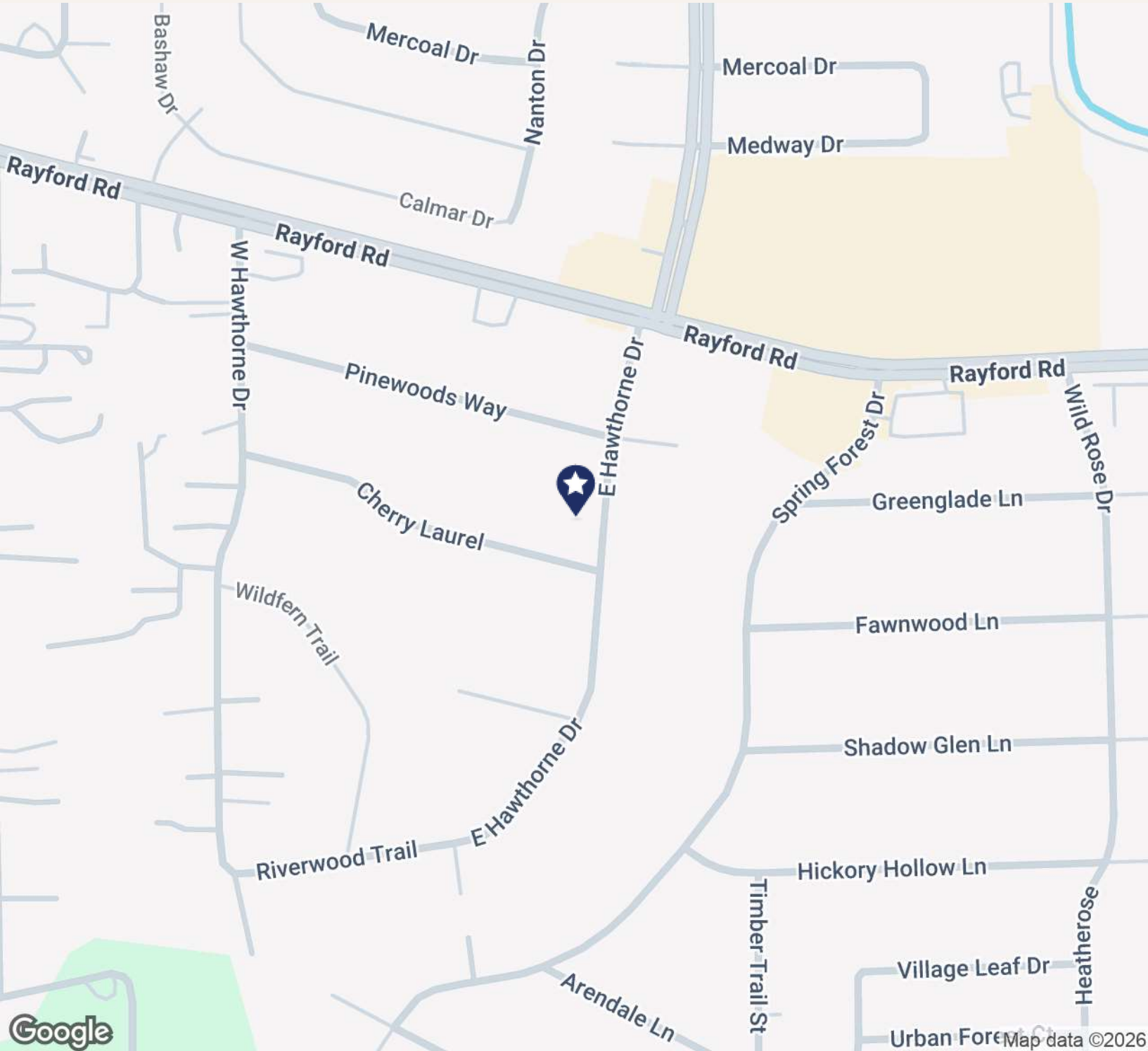
FOR MORE INFORMATION:



RON BROWN
PRINCIPAL
936.689.7228
RON@TX-CRG.COM

CHERRY LAUREL DRIVE OFFICE SPACE | FOR LEASE

2043 CHERRY LAUREL DR, SPRING, TX 77386



FOR MORE INFORMATION:



RON BROWN

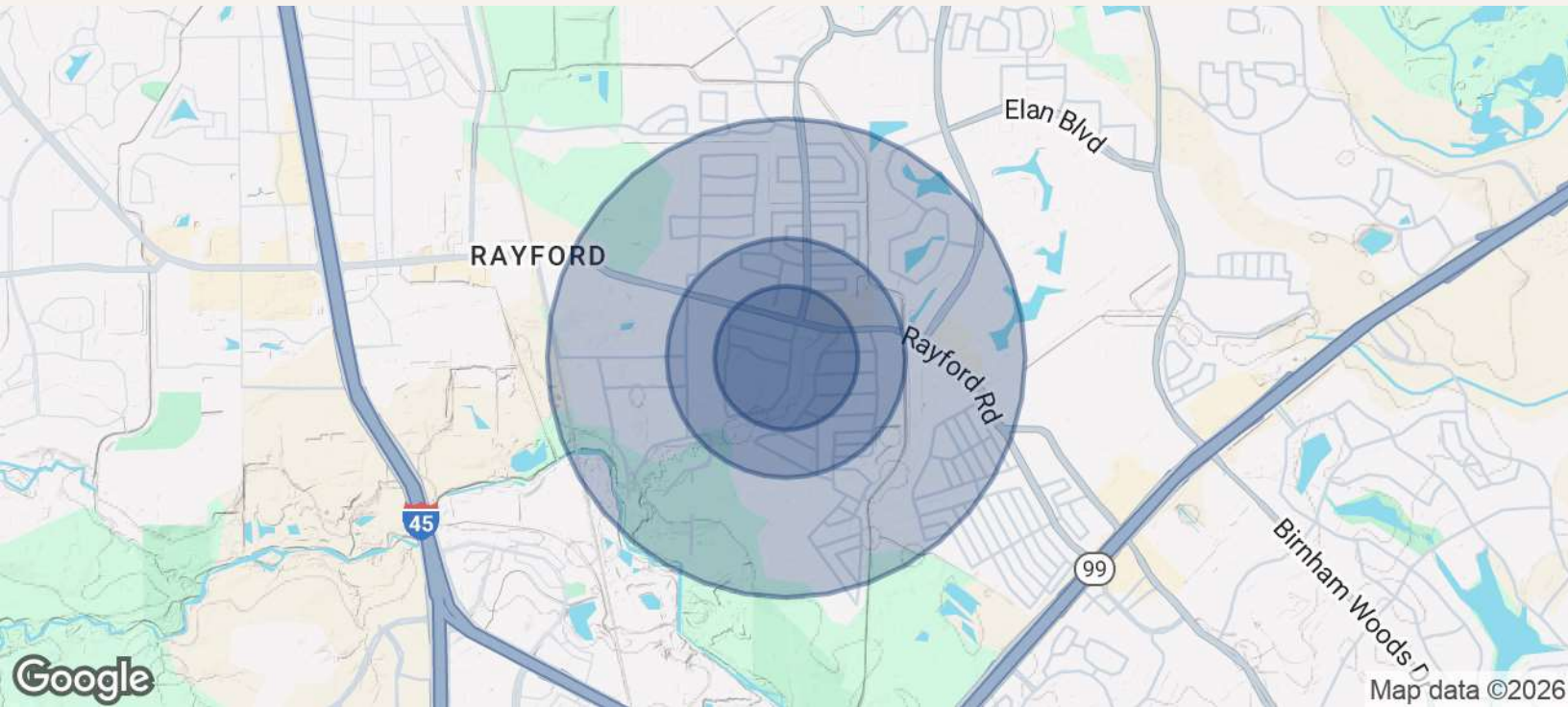
PRINCIPAL

936.689.7228

RON@TX-CRG.COM

CHERRY LAUREL DRIVE OFFICE SPACE | FOR LEASE

2043 CHERRY LAUREL DR, SPRING, TX 77386



Population	0.3 Miles	0.5 Miles	1 Mile
Total Population	607	2,780	9,517
Average Age	35	35	36
Average Age (Male)	34	35	35
Average Age (Female)	36	36	36
Households & Income	0.3 Miles	0.5 Miles	1 Mile
Total Households	216	929	3,128
# of Persons per HH	2.8	3	3
Average HH Income	\$87,008	\$90,829	\$93,450
Average House Value	\$223,628	\$252,430	\$258,077

Demographics data derived from AlphaMap

FOR MORE INFORMATION:



RON BROWN
 PRINCIPAL
 936.689.7228
 RON@TX-CRG.COM

Texas law requires all real estate licensees to give the following information about brokerage services to prospective buyers, tenants, sellers and landlords.

0 Shepard Hill Road Willis TX 77318 Phone: (855) 489-2734 Fax:
 Produced with Lone Wolf Transactions (zipForm Edition) 717 N Harwood St. Suite 2200, Dallas, TX 75201 www.lwolf.com