

FOR LEASE

OFFICE OR RETAIL IN DOWNTOWN



BLOCK+LOT

114 S. MAPLE ST.

WINCHESTER, KY 40391

ADAM BOARDMAN

859.338.8243

adam@balrealstate.com



01: EXECUTIVE SUMMARY

114 S. MAPLE ST.



PROPERTY DESCRIPTION

Positioned in the heart of downtown Winchester, 114 S Maple Street offers approximately 2,963 square feet of well-maintained office space ideal for a variety of professional uses. The building features a functional layout with multiple private offices, conference areas, and open workspace, providing flexibility for both small teams and established businesses. Ample natural light, classic architectural details, and modern updates create an inviting and professional environment. Conveniently located just steps from Main Street amenities, restaurants, and the courthouse, this property combines accessibility with small-town charm. On-site and nearby parking options further enhance convenience for staff and clients alike.

Located in the heart of Downtown Winchester, a short walk from Main St., and close proximity to shopping and restaurants.

PROPERTY HIGHLIGHTS

- Two story office building located in Downtown Winchester
- Flexible layout appealing to a variety of potential Tenants
- Ample natural light and dedicated parking



**2,964 SF
AVAILABLE**



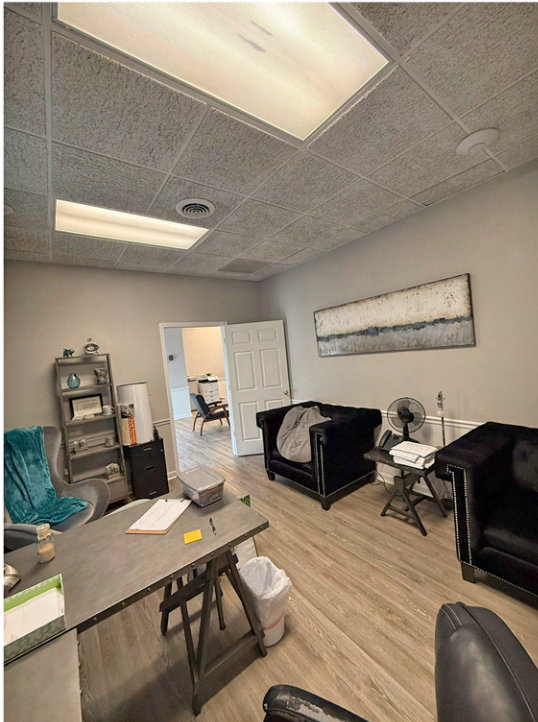
**\$12.50 PSF+
NNN**



**ZONED
B-2**

02: PROPERTY OVERVIEW

ADDITIONAL PHOTOS
114 S. MAPLE ST.



02: PROPERTY OVERVIEW

ADDITIONAL PHOTOS
114 S. MAPLE ST.



03: LOCATION INSIGHTS

AERIAL
114 S. MAPLE ST.

