

# OAKLAND PARK WAREHOUSES

519 NE 34TH STREET, OAKLAND PARK, FL 33334

## PROPERTY SUMMARY

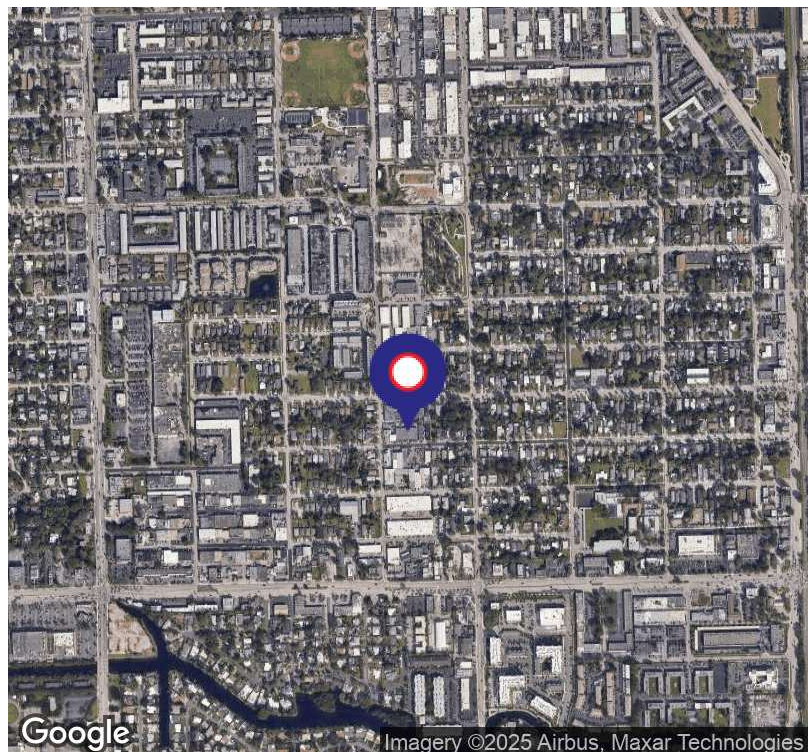


### PROPERTY DESCRIPTION

The Oakland Park Warehouses is an industrial warehouse property in Oakland Park, FL. This multi-tenant property has 7 units totaling 12,125 SF. The unit sizes range from 850 square feet to 3,300 square feet. Some units have 10% office, which are air-conditioned. There are a total of 13 grade level overhead doors that are either 12' x 10' or 10' x 10' with some units having more than one overhead door. All bays have an 11' clear ceiling height. Easy access to the I-95 interchange. Zoned I-1 for Light Industrial.

### PROPERTY HIGHLIGHTS

- Small bay warehouses
- Units range from 850 SF to 3,300 SF
- Air-conditioned offices available
- 12' x 10' and 10' x 10' grade level overhead doors
- 11' clear ceiling in warehouse
- Easy access to I-95 interchange



### ANGIE WEAVER

Lauderdale Lakes and Lauderhill Manager  
Direct: 954.485.9200 | Cell: 917.645.2339  
angie@levyrai.com

### HALEY PRESSER

Property Manager / Sales Associate  
Direct: 954.485.9200 | Cell: 954.254.5396  
Haley@levyrai.com



FOR LEASE

# OAKLAND PARK WAREHOUSES

519 NE 34TH STREET, OAKLAND PARK, FL 33334

## ADDITIONAL PHOTOS



### ANGIE WEAVER

Lauderdale Lakes and Lauderhill Manager  
Direct: 954.485.9200 | Cell: 917.645.2339  
angie@levyrai.com

### HALEY PRESSER

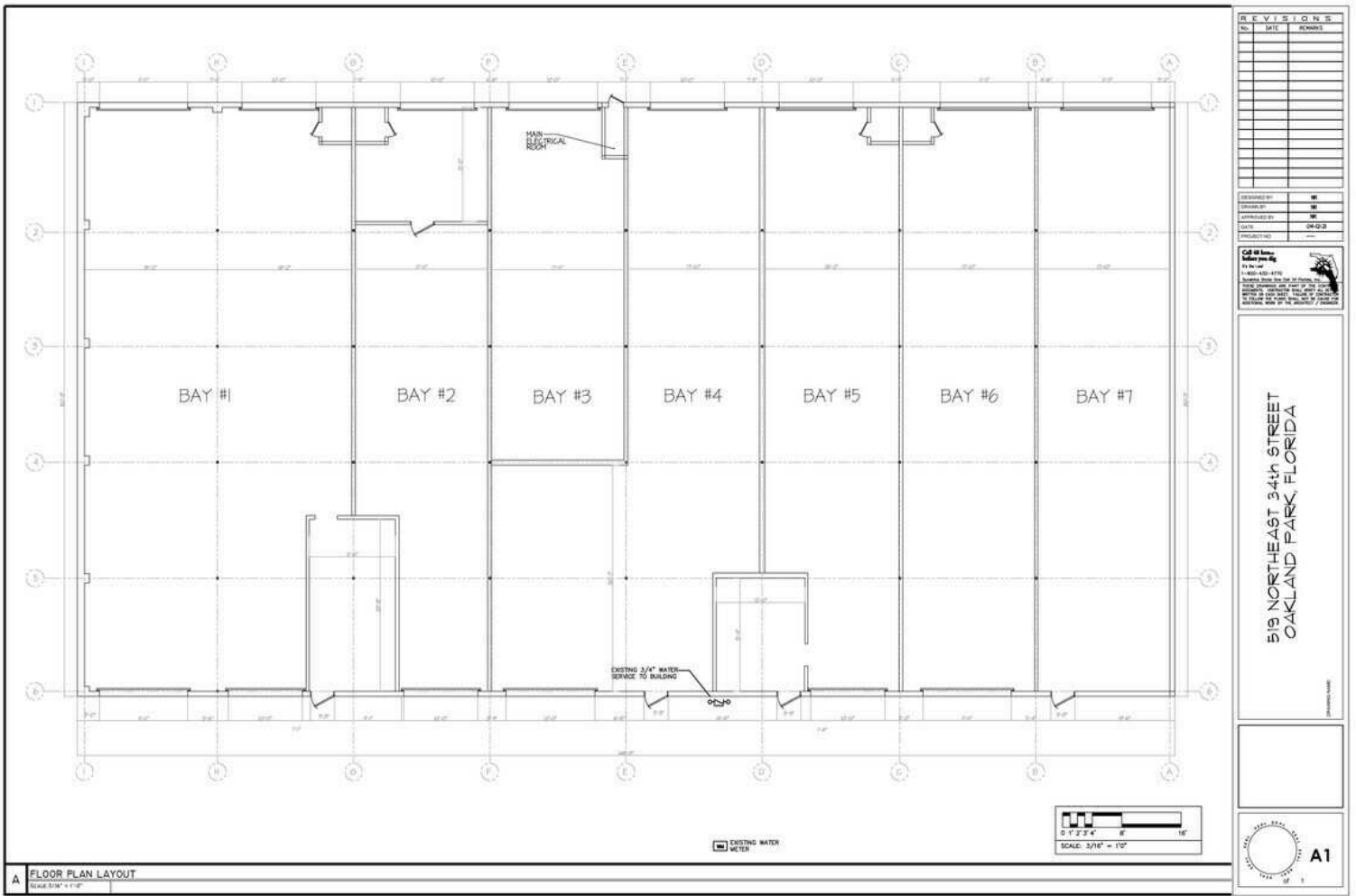
Property Manager / Sales Associate  
Direct: 954.485.9200 | Cell: 954.254.5396  
Haley@levyrai.com



# OAKLAND PARK WAREHOUSES

519 NE 34TH STREET, OAKLAND PARK, FL 33334

## SITE MAP



### ANGIE WEAVER

Lauderdale Lakes and Lauderhill Manager  
Direct: 954.485.9200 | Cell: 917.645.2339  
angie@levyrai.com

### HALEY PRESSER

Property Manager / Sales Associate  
Direct: 954.485.9200 | Cell: 954.254.5396  
Haley@levyrai.com

