

# **EXCLUSIVE LISTING!**

2.07 +/- Acres Welpman Way and Fairfield  
Henderson, NV 89044- Listed \$1,800,000



## *Property Details*

- APN 191-09-801-007
- 2.07 +/- Acres
- City of Henderson Jurisdiction
- No Zoning
- Area near Raiders Way undergoing rapid development in residential, commercial and industrial
- Paved road
- SEC Lot / Welpman Way and Fairfield
- Water line 300' to the east at Bermuda
- Future plans underway to lay sewer in Welpman Way due to Richmond American Homes development to the west of the parcel
- \*\*\*Owner Licensee\*\*\*



**Mark Anthony Rua**  
**Brokers**

S.026655

Office: 702-992-7534  
Cell: 702-595-6244

2855 St Rose Parkway, Suite 100, Henderson, NV 89052  
[markanthonyrua@gmail.com](mailto:markanthonyrua@gmail.com) [www.mrlandlasvegas.com](http://www.mrlandlasvegas.com)



2.07 +/- Acres Welpman Way and Fairfield



**Mark Anthony Rua**  
**Brokers**

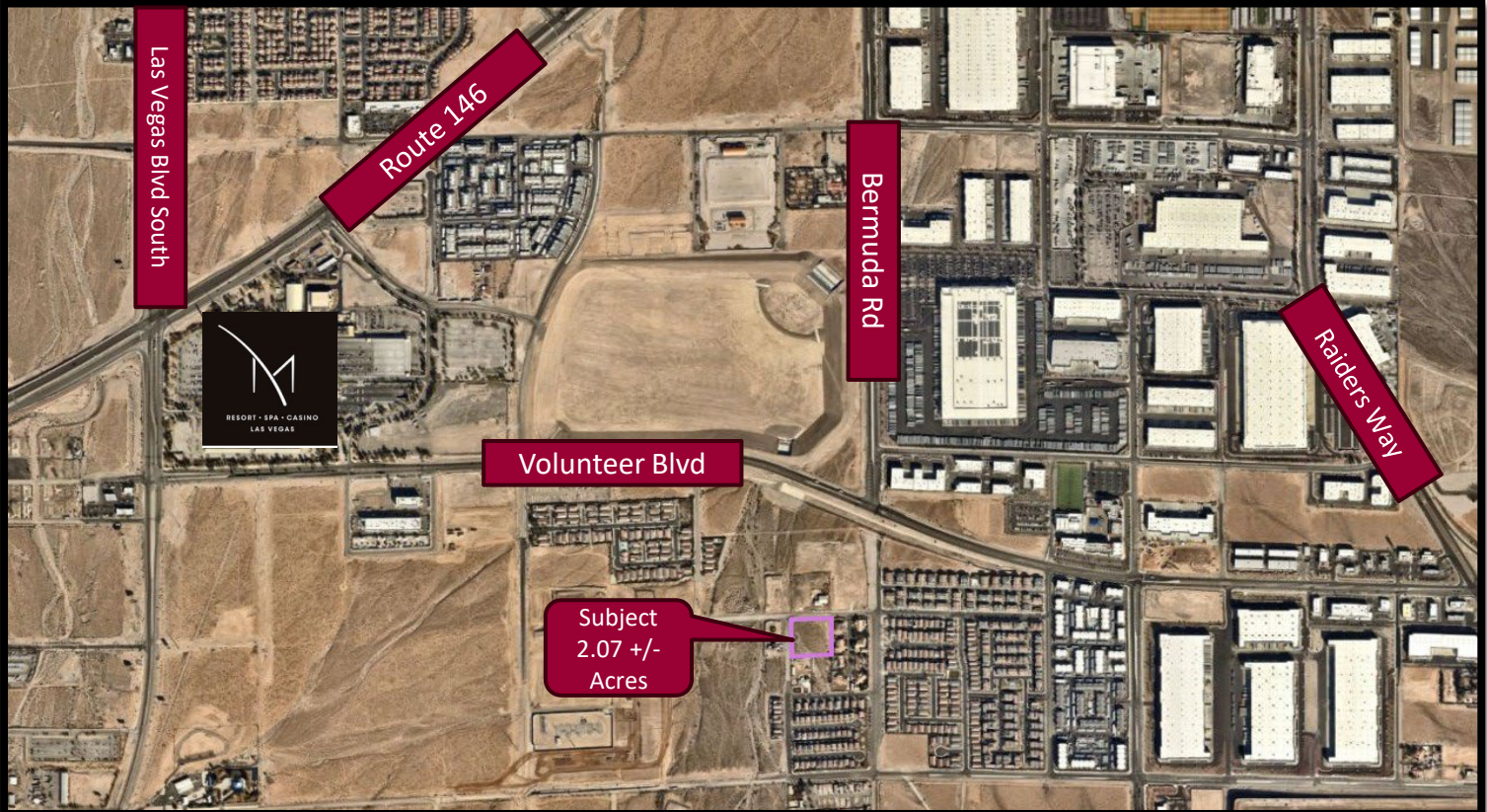
2855 St Rose Parkway, Suite 100, Henderson, NV 89052  
[markanthonyrua@gmail.com](mailto:markanthonyrua@gmail.com) [www.mrlandlasvegas.com](http://www.mrlandlasvegas.com)

Office: 702-992-7534  
Cell: 702-595-6244



The information contained herein is subject to verification and no liability for errors or omissions is assumed. The price, data, and other information are subject to change or the listing may be withdrawn without notice.

2.07 +/- Acres Welpman Way and Fairfield



**Mark Anthony Rua**  
**Brokers**

2855 St Rose Parkway, Suite 100, Henderson, NV 89052  
[markanthonyrua@gmail.com](mailto:markanthonyrua@gmail.com) [www.mrlandlasvegas.com](http://www.mrlandlasvegas.com)

Office: 702-992-7534  
Cell: 702-595-6244



The information contained herein is subject to verification and no liability for errors or omissions is assumed. The price, data, and other information are subject to change or the listing may be withdrawn without notice.



# Mark Anthony Rua

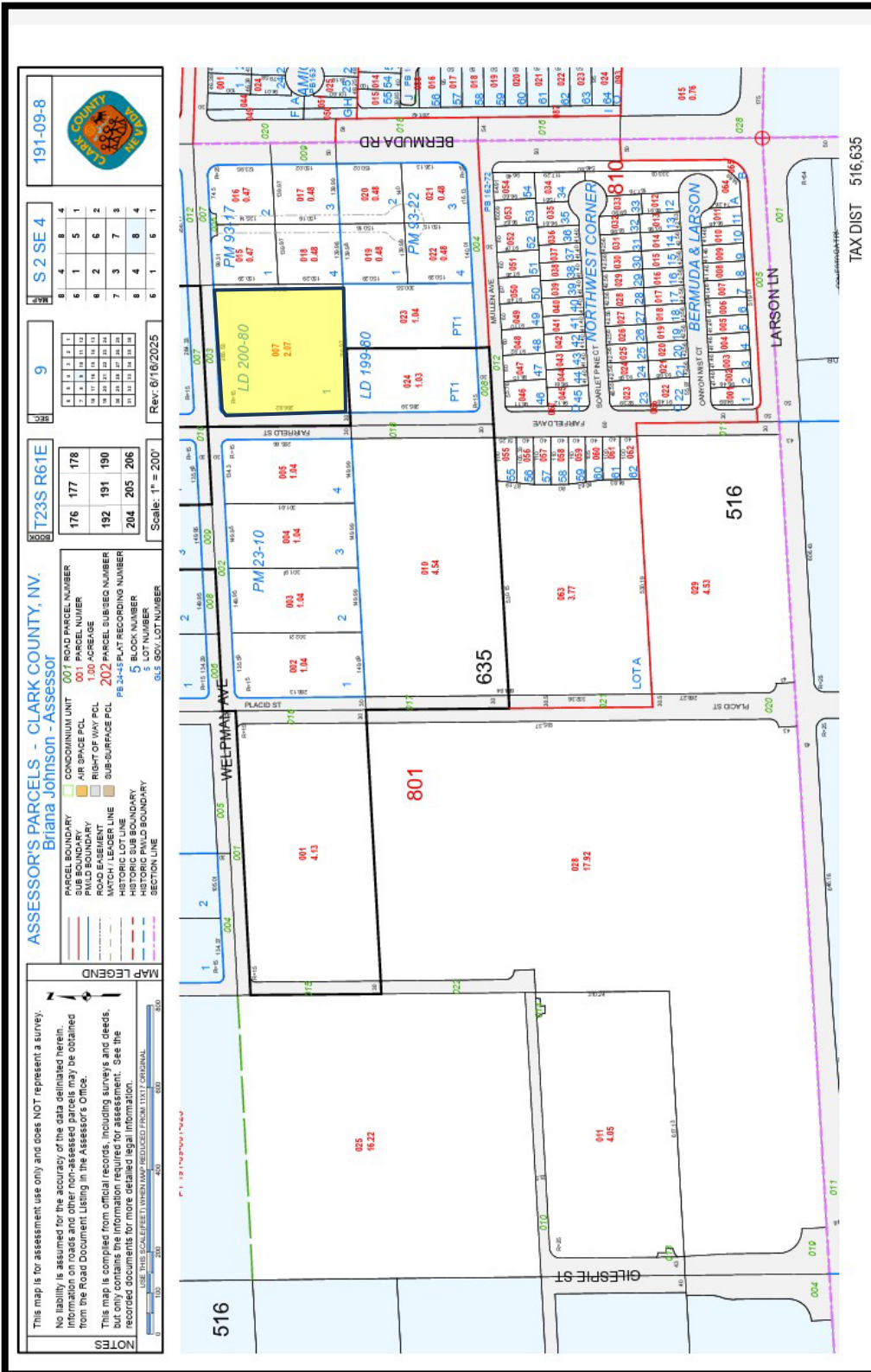
## Brokers

2855 St Rose Parkway, Suite 100, Henderson, NV 89052  
[markanthonyrua@gmail.com](mailto:markanthonyrua@gmail.com) [www.mrlandlasvegas.com](http://www.mrlandlasvegas.com)

Office: 702-992-7534  
Cell: 702-595-6244



The information contained herein is subject to verification and no liability for errors or omissions is assumed. The price, data, and other information are subject to change or the listing may be withdrawn without notice.



2.07 +/- Acres Welpmann Way and Fairfield

TAX DIST 516.635