



## Wilder Road

3003-3113 N Wilder Rd, Plant City, FL 33563

### Property Highlights

- Two parcels totaling 5.06 Acres, currently zoned AS-1
- Located next to the new South Florida Baptist Hospital opening in early 2024, a new 420,000 SF facility with 146 Private Rooms, 26 ICU Beds, 30 Emergency Room
- Potential rezoning to accommodate a variety of commercial uses, including medical office and retail
- Just north of the I-4 and Park Rd interchange, Exit 22
- Surrounded by new residential and commercial development taking place in the northern part of Plant City

### DEMOGRAPHIC INFORMATION

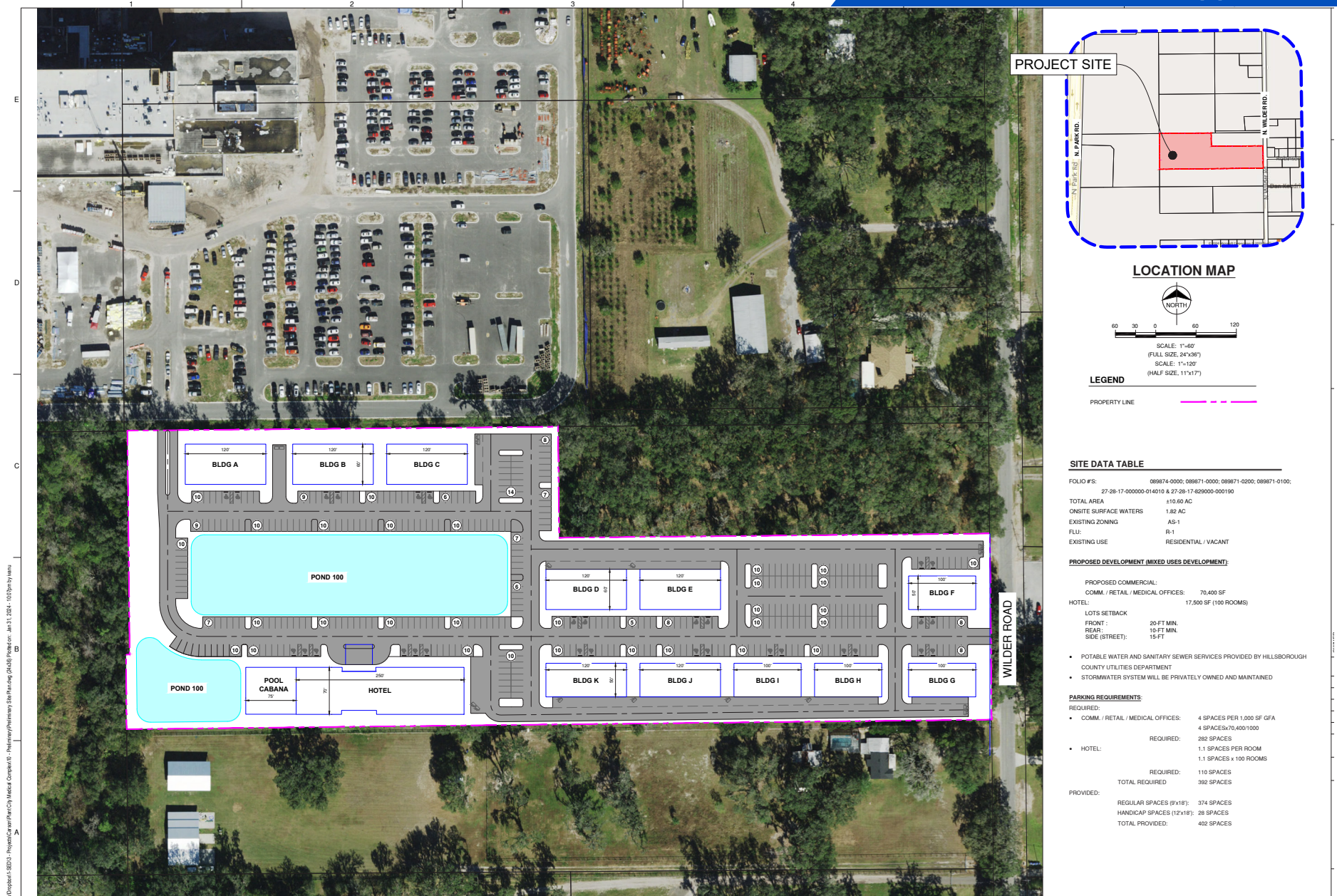


Radius	Population	Households
1 Mile	1,578	545
3 Miles	22,268	8,285
5 Miles	54,099	19,638



Radius	Average HH Income	Employees
1 Mile	\$80,329	673
3 Miles	\$70,969	8,575
5 Miles	\$77,579	24,331









We obtained the information above from sources we believe to be reliable. However, we have not verified its accuracy and make no guarantee, warranty or representation about it. It is submitted subject to the possibility of errors, omissions, change of price, rental or other conditions, prior sale, lease or financing, or withdrawal without notice. We include projections, opinions, assumptions or estimates for example only, and they may not represent current or future performance of the property. You and your tax and legal advisors should conduct your own investigation of the property and transaction.

401 E Jackson St Suite 3300  
Tampa, FL 33602  
813 726 4853 tel  
[vendita.ai](http://vendita.ai)