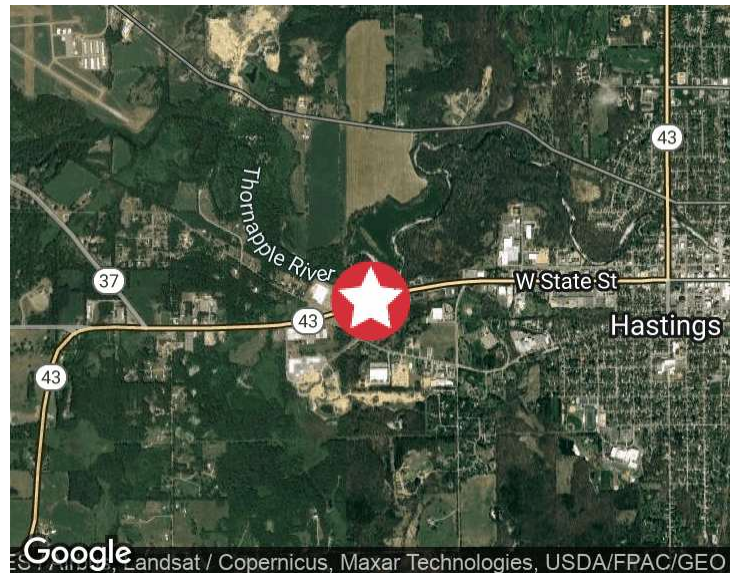




1450 W M 43 Hwy  
Hastings, Michigan 49058

### Property Highlights

- 
- Walmart Shadow Anchored Center
- 1,200-2,400 SF Retail Space Available
- Current Tenants Include Great Clips, T Mobile and Airway Oxygen, Inc.
- Join Growing Market of Hastings, Including Newly Opened T.J. Maxx



For More Information

**Todd Leinberger**

O: 616 242 1114

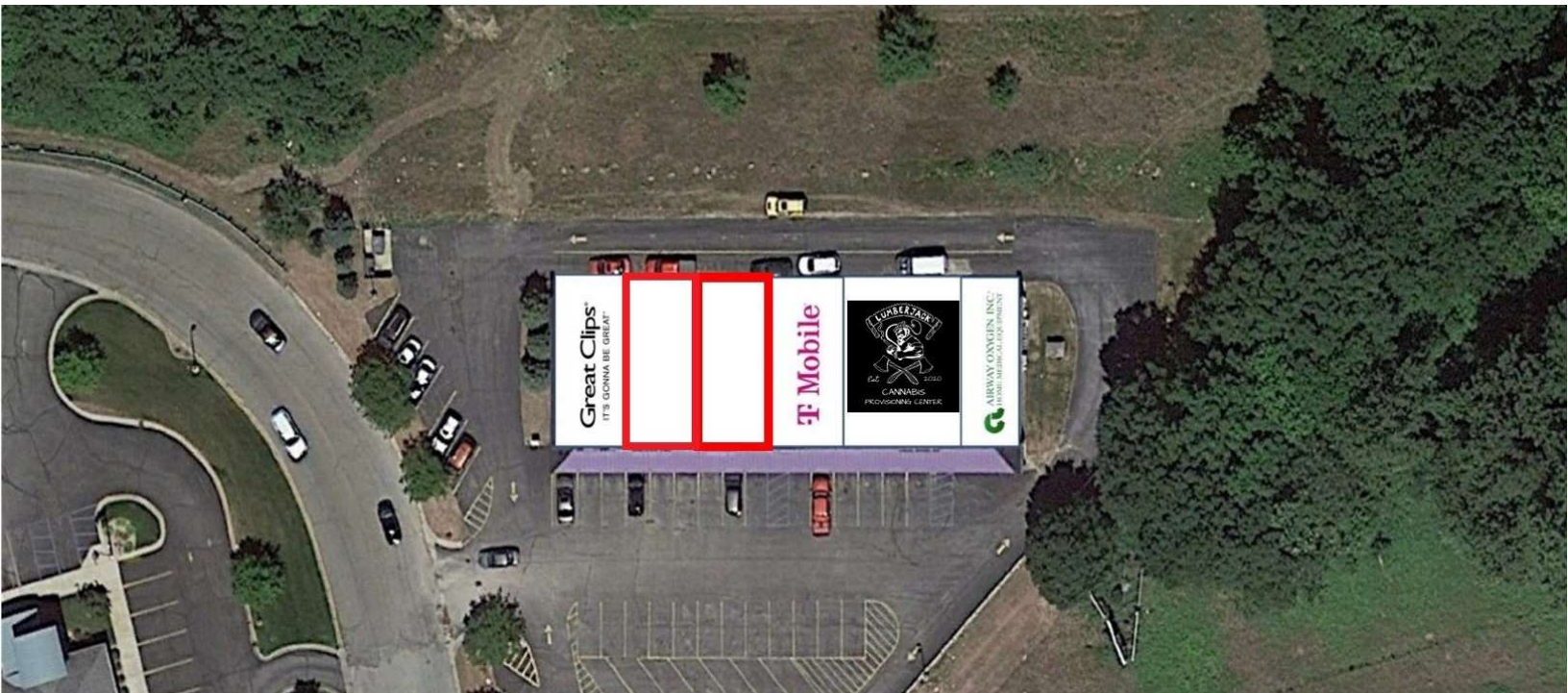
todd@naiwwm.com

# Property Overview

1450 W M 43 Hwy  
Hastings, Michigan 49058

## Westside Plaza

<b>Location:</b>	Westside Plaza on the north side of M-43, west of Cook Rd. and East of Green St.
<b>Total Building Size:</b>	8,750 SF
<b>Signage:</b>	Large roadside pylon and building
<b>Parking:</b>	Onsite ample parking lot
<b>Zoning:</b>	Mixed Use



# Lease Overview

1450 W M 43 Hwy  
Hastings, Michigan 49058

## Lease Information

<b>Lease Type:</b>	NNN
<b>Terms:</b>	60-180 Months
<b>PPN:</b>	08-13-013-006-30

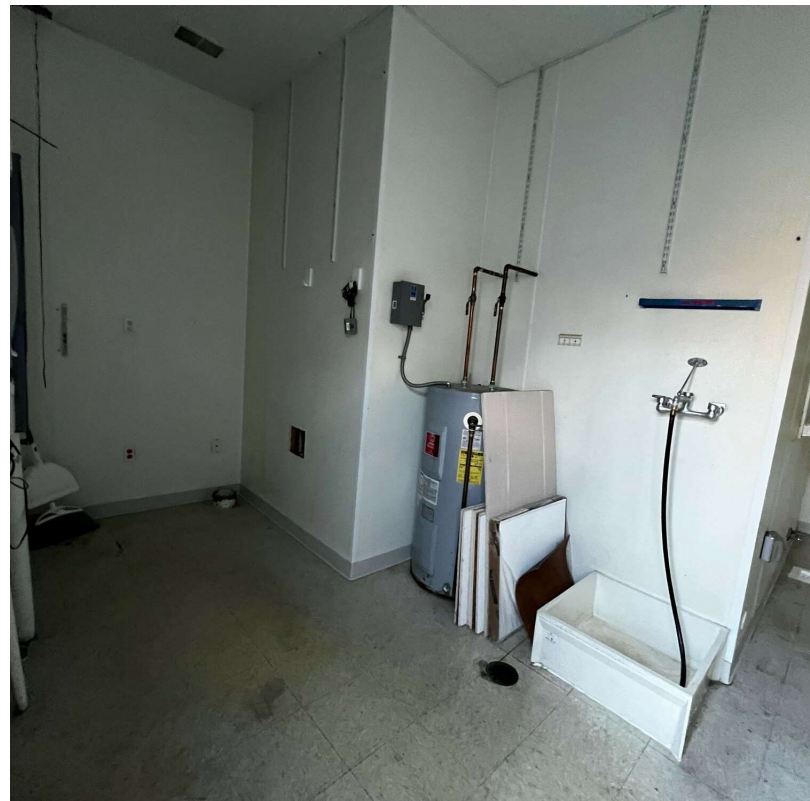
## Availability

SUITE	RENTABLE SF	RATE / SF / YR	MONTHLY RENT	CAM CHARGE MONTHLY	TOTAL MONTHLY RENT
<b>Suite 3</b>	1,200 SF	\$18.95	\$1,895.00	\$805.00	\$2,700.00
<b>Suite 2</b>	1,200 SF	\$18.95	\$1,895.00	\$805.00	\$2,700.00



# Photos

1450 W M 43 Hwy  
Hastings, Michigan 49058



# Retail Map

1450 W M 43 Hwy  
Hastings, Michigan 49058



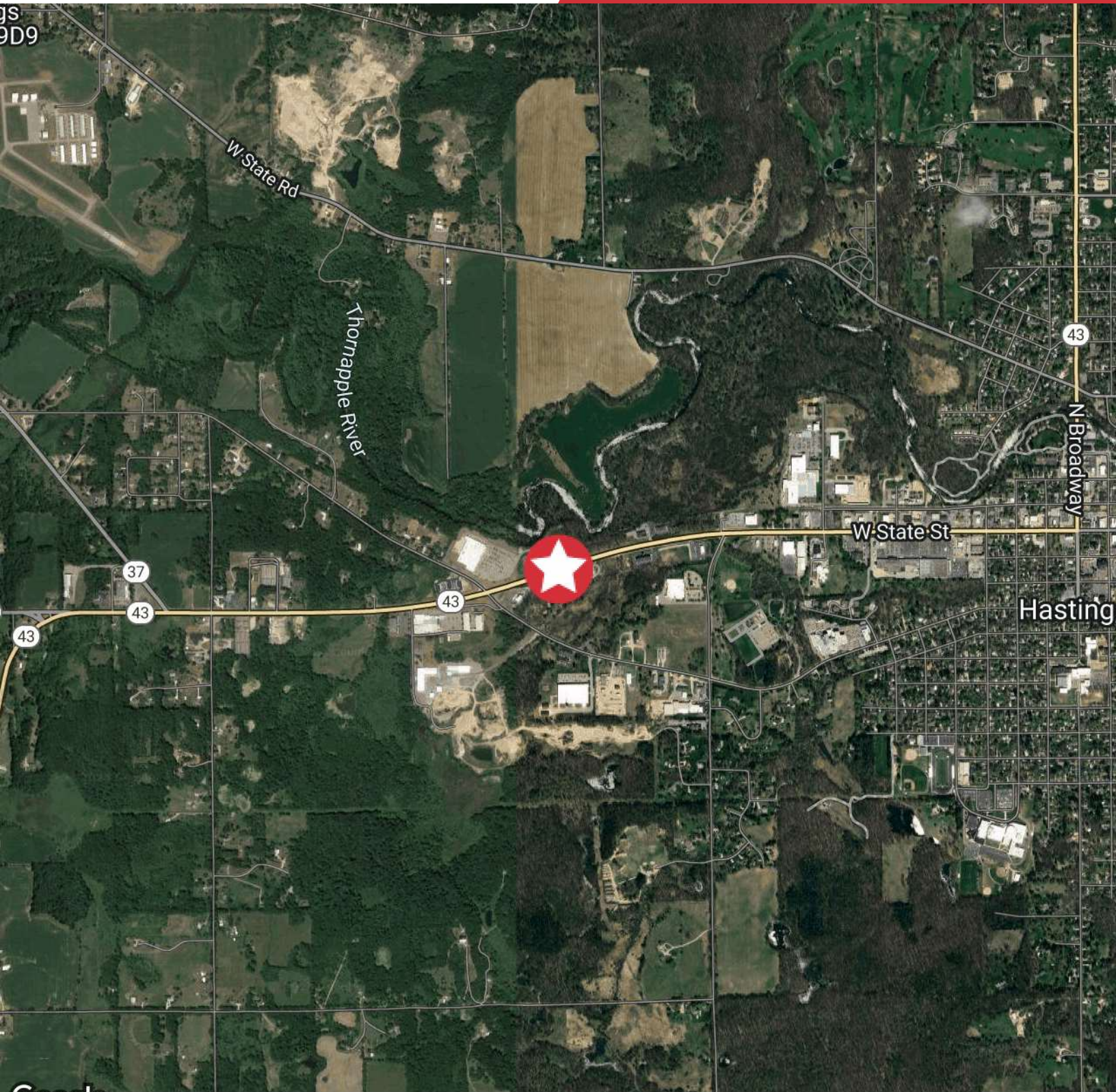
# Pylon Sign

1450 W M 43 Hwy  
Hastings, Michigan 49058



# Location Map

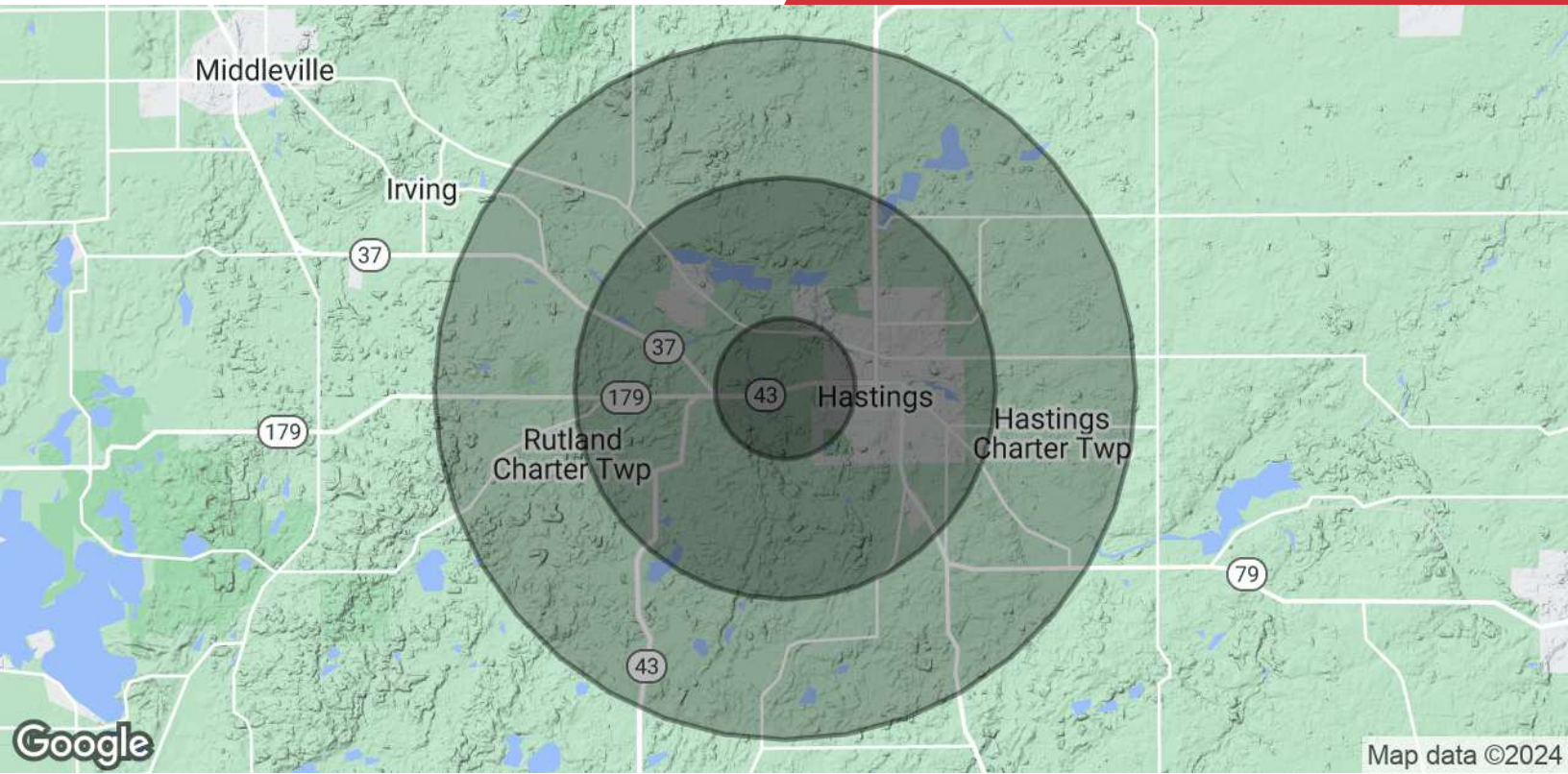
1450 W M 43 Hwy  
Hastings, Michigan 49058



Google Map data ©2024 Imagery ©2024 Airbus, CNES / Airbus, Landsat / Copernicus, Maxar Technologies, USDA/FPAC/GEO

# Demographics Map & Report

1450 W M 43 Hwy  
Hastings, Michigan 49058



POPULATION	1 MILE	3 MILES	5 MILES
<b>Total Population</b>	589	8,692	14,292
<b>Average Age</b>	53.3	38.9	39.8
<b>Average Age (Male)</b>	52.0	38.8	39.6
<b>Average Age (Female)</b>	53.9	39.0	39.6
HOUSEHOLDS & INCOME	1 MILE	3 MILES	5 MILES
<b>Total Households</b>	328	3,682	6,033
<b># of Persons per HH</b>	1.8	2.4	2.4
<b>Average HH Income</b>	\$54,131	\$65,361	\$67,976
<b>Average House Value</b>	\$152,182	\$144,417	\$153,690

\* Demographic data derived from 2020 ACS - US Census





# West Michigan Overview

## West Michigan Advantage

West Michigan is a growing region of more than 1.5 million people and is located between Detroit and Chicago. More than 130 international companies are located in West Michigan as well as four of Forbes Largest Private Companies. The businesses and community leaders have set in motion an unprecedented level of growth and investment throughout the region that has made West Michigan a destination for business success. West Michigan has a vibrant, big-city feel in Grand Rapids while retaining smaller-city charm in its neighborhoods, boutique shopping areas, and tree-lined streets - all combined in a virtual playground of arts, culture and natural beauty.

## Quality Of Life

West Michigan has a vibrant, big-city feel in Grand Rapids while retaining smaller-city charm in its neighborhoods.

## Grand Rapids Ranking

- #1 Fastest Growing US Economy  
-HeadlightData
- #19 Best Cities in the US  
- USNews
- #3 Big Cities with the Healthiest Markets  
-SmartAsset
- #4 Housing Markets to Watch 2017  
- Trulia
- #5 Best Large Cities to Start a Business  
- WalletHub

### Entertainment

More than 1.5 million people take advantage of sporting events and live performances every year. West Michigan offers a variety of landscapes which allows for a greater sense of adventure. Lake Michigan has 18 world-class beaches and 288 miles of bike trails.

### Skilled Workforce

Out of the 1.5 million residents that live in West Michigan, half are under the age of 35. This is a great opportunity for both employers and college graduates. With the high supply of skilled workers and high demand for jobs, it is easy to understand why the region is a destination for business success.

### Arts & Culture

West Michigan is known for their arts and culture. Aside from many museums, the city hosts ArtPrize— a unique, open art competition that gives away the world's largest art prize. Other, attractions include Frederik Meijer Gardens, Grand Rapids Ballet, Civic Theatre, and Symphony.