



20+ ACRES BEACHFRONT MUSTANG ISLAND

7000 ST HWY 361, Port Aransas, TX 78373



Suzette Freeman

Port Aransas Realty
104 Mustang Blvd, Port Aransas, TX 78373
suzette@portaransasrealty.com
(361) 749-4000



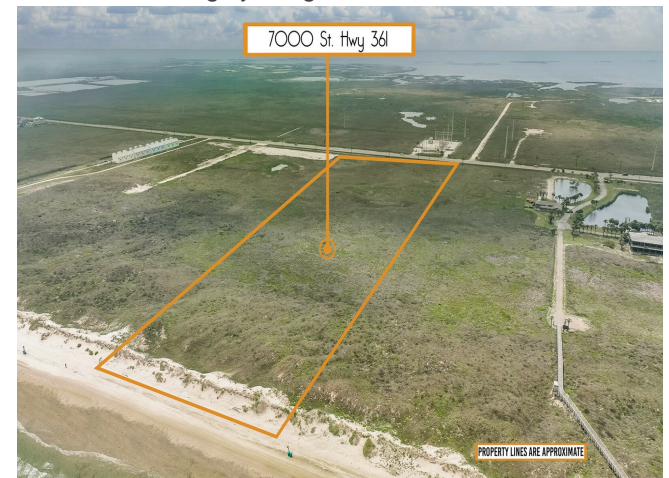
20+ ACRES BEACHFRONT MUSTANG ISLAND

\$3,900,000

20+ Acres of undeveloped beachfront land on offers 500'+ of beach & highway frontage. Zoned for a variety of uses including single family & multi-family projects. RV parks are not allowed. Located in the city limits of Corpus Christi on Mustang Island, this is a rare find! Utilities are at the hwy. including water, sewer & electric. Corpus Christi Airport is 30 minutes away, San Antonio 2hrs. 45 minutes, Austin 3 hours, & Houston...

Prime location on Mustang Island. Invest to develop or build a private beachfront family oasis!...

- Beachfront.
- Gulf of Mexico and Corpus Christi Bay views.
- Located in a highly sought after resort area!



Price:	\$3,900,000
Property Type:	Land
Property Subtype:	Residential
Proposed Use:	Hold For Development
Sale Type:	Investment or Owner User
Total Lot Size:	20.00 AC
No. Lots:	1
APN / Parcel ID:	926901670905



7000 ST HWY 361, Port Aransas, TX 78373

20+ Acres of undeveloped beachfront land on offers 500'+ of beach & highway frontage. Zoned for a variety of uses including single family & multi-family projects. RV parks are not allowed. Located in the city limits of Corpus Christi on Mustang Island, this is a rare find! Utilities are at the hwy. including water, sewer & electric. Corpus Christi Airport is 30 minutes away, San Antonio 2hrs. 45 minutes, Austin 3 hours, & Houston 3.5 hours.

Multifamily 1, 2, 3, and AT Districts (Section 4.4.1.C)

The "RM" zoning districts provide a variety of housing types at multifamily densities. Housing types may take the form of single-family detached, zero lot line, and traditional semi-attached, two-family, townhouse or apartment units. These zoning districts are used in areas having convenient access to collector and arterial streets, and nearby civic and commercial uses, as well as employment opportunities. The "RM zoning districts are appropriate to be located adjacent to nonresidential districts. The numerical values of the zoning districts (i.e. 1, 2, 3, or AT) relate to the intensity of density of each zoning district. For example, the "RM-1" District allows a density of 22 dwelling units per acre while the "RM-3" District allows 36 dwelling units per acre.

Property Photos



Property Photos



7000 St. Hwy 361

PROPERTY LINES ARE APPROXIMATE
7000StHwy361-11