

# Downtown San Jose Retail/Office Units For Lease – 4,334-19,372 SF Available

Renovated Basement, First, & Second Floor Units For Lease

**DAVID TAXIN**  
Partner  
Lic. #00983163  
408.966.5919  
dtaxin@moinc.net

**BOBBY FACCHINO**  
Associate  
Lic. # 02178873  
408.318.0623  
bobby@moinc.net

**269-299 Bassett Street, San Jose  
CA**





**Rental Rate:** \$1.85 PSF plus NNN

**Space SF:** 4,334-19372+ SF

**Zoning:** CIC – Combined Industrial Commercial

**# of Parking Spaces:** 20+

# 269-299 Bassett Street Retail/Office For Lease

Renovated First & Second Floor Units For Lease

- Fully renovated basement, first floor, and second floor retail/office units in downtown San Jose.
- **Unit 100:** 4,334 SF - \$ 1.85 PSF plus NNN. (Possible to combine with unit 200)
- **Unit 125:** 4,717 SF - \$ 1.85 PSF plus NNN. (Can be combined with unit 150)
- **Unit 150:** 4,732 SF - \$ 1.85 PSF plus NNN. (Can be combined with unit 125)
- **Unit 200:** 5,589 SF - \$ 1.85 PSF plus NNN. (Possible to combine with unit 100)
- Strong demographics with average household incomes of \$169,546 in a 1-mile radius.
- Easy access to HWY 87 & 280.
- Dense population of 244,930 people in a 3-mile radius.
- 20 ± parking spots available.

















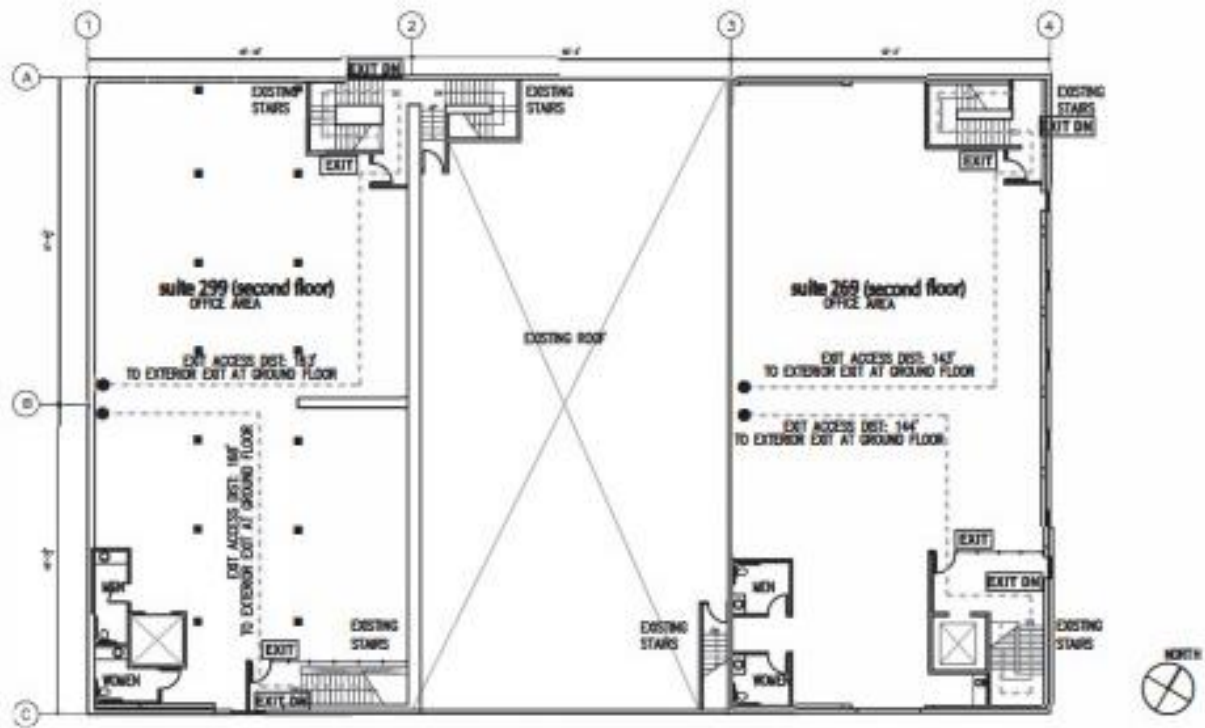


# Outdoor Parking for Clients

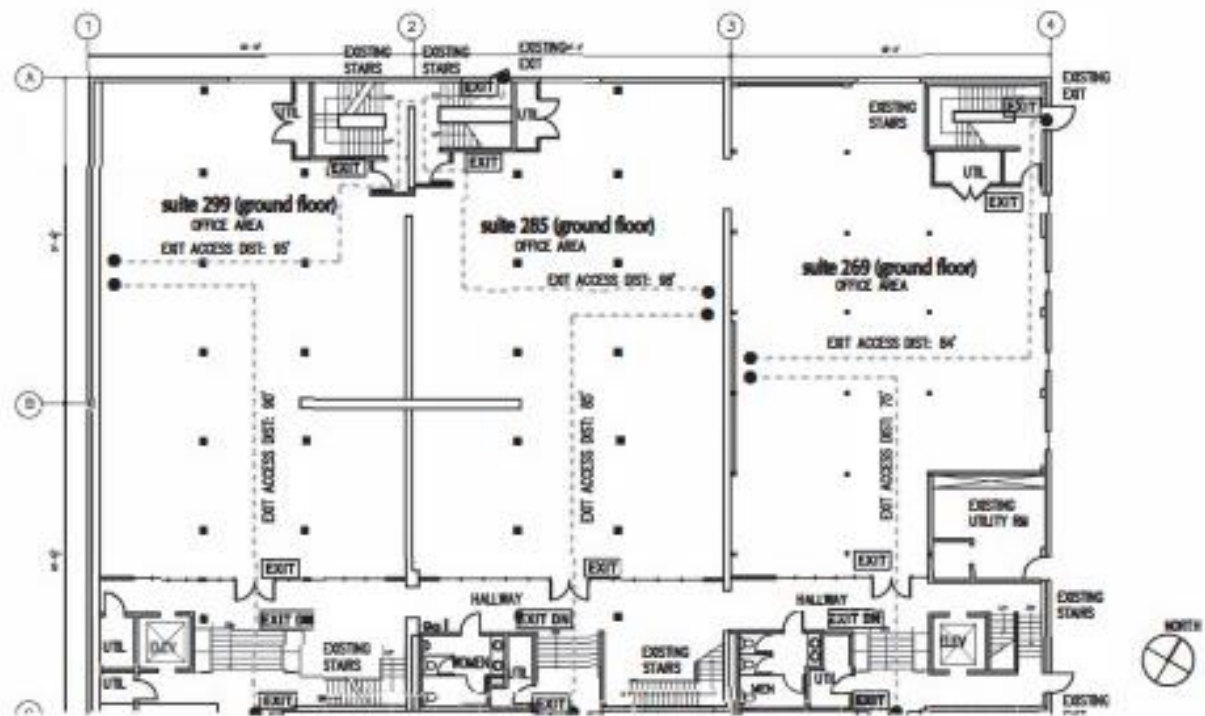


# Outdoor Parking for Clients

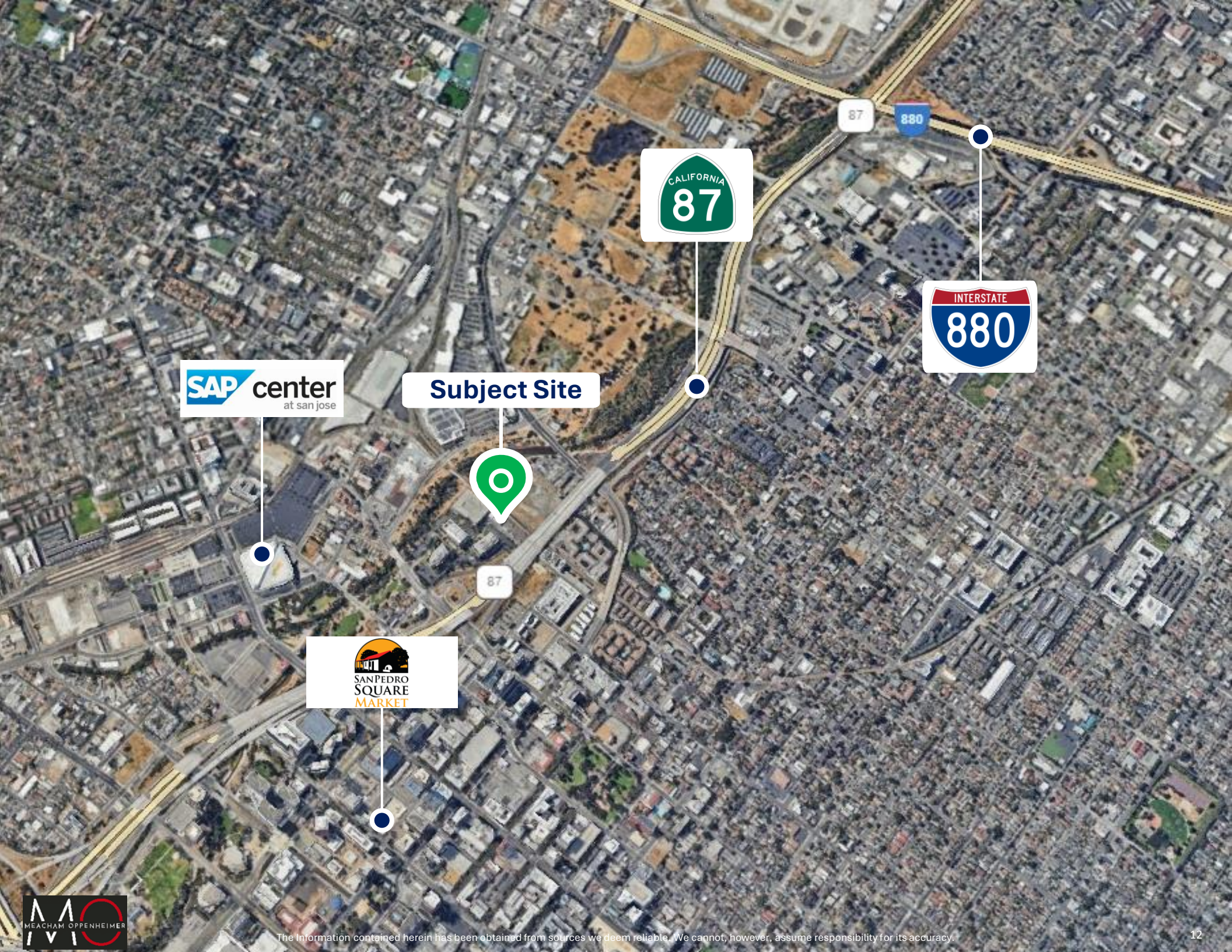




second floor plan -



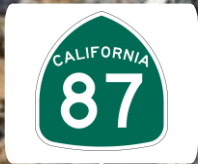
ground floor plan -



**SAP center**  
at san jose

**Subject Site**

  
**SAN PEDRO  
SQUARE  
MARKET**



# DEMOGRAPHICS



<b>2023 SUMMARY</b>	<b>1-MILE</b>	<b>3-MILE</b>	<b>5-MILE</b>
<b>Population</b>	32,928	244,930	700,047
<b>Households</b>	14,830	88,064	238,265
<b>Average Household Size</b>	2.10	2.64	2.87
<b>Owner Occupied Housing Units</b>	3,392	31,543	107,487
<b>Renter Occupied Housing Units</b>	11,438	56,521	130,778
<b>Median Age</b>	36.5	34.6	36.1
<b>Median Household Income</b>	\$114,452	\$107,058	\$118,722
<b>Average Household Income</b>	\$169,546	\$157,318	\$166,258



# 269-299 Bassett Street, San Jose

**DAVID TAXIN**

Partner  
Lic. #00983163  
408.966.5919  
dtaxin@moinc.net

**BOBBY FACCHINO**

Associate  
Lic. #02178873  
408.318.0623  
bobby@moinc.net

MEACHAM/OPPENHEIMER, INC.  
8 N San Pedro St. #300  
San Jose, CA 95110  
Tel. 408.378.5900  
www.moinc.net

