



SAURAGE ROTENBERG™
COMMERCIAL REAL ESTATE

FOR SALE OFFICE/WAREHOUSE, HEART OF BR HEALTH DISTRICT

8377 PICARDY AVENUE, BATON ROUGE, LA 70809

12,513 SF

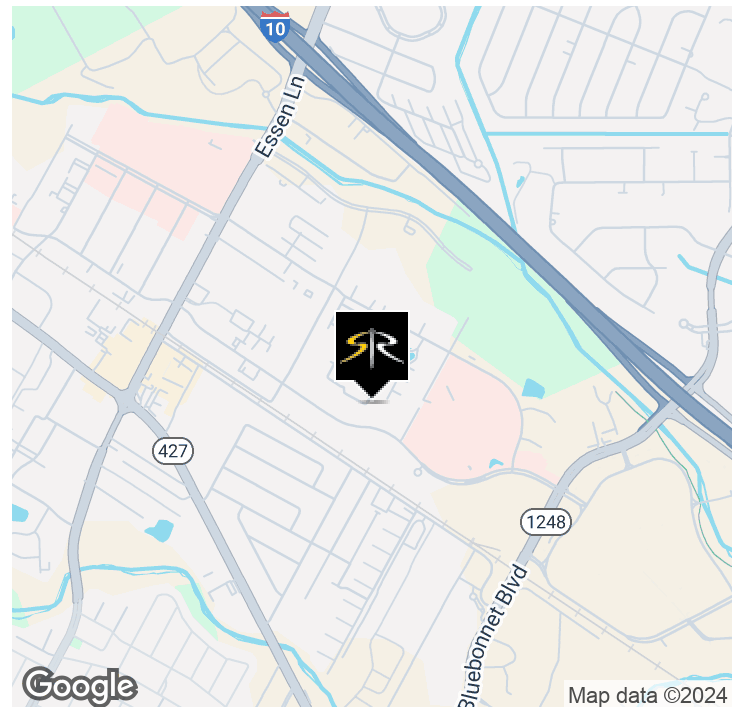


OFFERING SUMMARY

Building Sale Price:	\$1,700,000
Building Size:	12,513 SF
Adjacent Vacant Lot Price (0.894 Acres):	\$625,000
Combined Sale Price (Building & Vacant Lot):	\$2,350,000
Zoning:	M-1

PROPERTY HIGHLIGHTS

- Large Office / Warehouse with Covered Canopy located in the heart of the Baton Rouge Health District Available for Sale
- Surrounded by OLOL, Baton Rouge General, Ochsner, Mary Bird Perkins Cancer Center, OLOL Children's Hospital
- New Enhanced Access from new Bluebonnet Blvd - OLOL Children's Hospital road
- Perfect for Additional Space for Existing Medical Facilities, or for any Medical Related Business, Medical Equipment Sales, Distribution
- Seller will consider splitting cost of Access Road from Picardy to Bldg.



MIKE STINSON, CCIM

Commercial Sales & Leasing
(D)225.907.7793
mike@sr-cre.com

SAURAGE ROTENBERG COMMERCIAL REAL ESTATE, LLC

5135 Bluebonnet Boulevard
Baton Rouge, LA 70809
225.766.0000 | sauragerotenberg.com

The information contained herein has either been given to us by property owners or is from sources deemed reliable and is believed to be correct, it is not in any way warranted or guaranteed by Saurage Rotenberg Commercial Real Estate. This information is submitted subject to errors, omissions, changes in price, rental or other conditions, withdrawal without notice, and to any special listing conditions imposed by the principals. Licensed in Louisiana & Mississippi.



SAURAGE ROTENBERG™
COMMERCIAL REAL ESTATE

FOR SALE
OFFICE/WAREHOUSE, HEART OF BR HEALTH DISTRICT
8377 PICARDY AVENUE, BATON ROUGE, LA 70809

12,513 SF



COMPLETE PROPERTY HIGHLIGHTS

- **Large Office/Warehouse with Covered Canopy located in the heart of the Baton Rouge Health District Available for Sale**
- Surrounded by OLOL, Baton Rouge General, Ochsner, Mary Bird Perkins Cancer Center, OLOL Children's Hospital
- New Enhanced Access from new Bluebonnet Blvd - OLOL Children's Hospital Rd.
- Perfect for Additional Space for existing Medical Facilities, or for any Medical Related Business, Medical Equipment Sales, and Distribution
- ****Seller will consider splitting cost of a Drive/ Access road from Picardy to Building**
- **12,513 SF Total Space:**
 - 8,633 SF Office/Warehouse
 - 3,880 SF Canopy Space
- Renovated in 2015, including HVAC
- Fully Insulated Warehouse
- Secure Fenced in Yard
- Large Reception Area
- Large Kitchen/ Break Area
- Large Lockable Storage Cage for Equipment, Instruments 36 Parking Spaces
- Zoned M-1, Light Industrial
- *****Adjacent Lot (0.894 Acres) with 385' Picardy Ave. Frontage also available For Sale (\$625,000)**
- Lot Measures:
 - 175' Depth @ West Boundary
 - 60' Depth @ East Boundary
- **Contact Agent for more information**

MIKE STINSON, CCIM
Commercial Sales & Leasing
(D)225.907.7793
mike@sr-cre.com

SAURAGE ROTENBERG COMMERCIAL REAL ESTATE, LLC
5135 Bluebonnet Boulevard
Baton Rouge, LA 70809
225.766.0000 | sauragerotenberg.com

The information contained herein has either been given to us by property owners or is from sources deemed reliable and is believed to be correct, it is not in any way warranted or guaranteed by Saurage Rotenberg Commercial Real Estate. This information is submitted subject to errors, omissions, changes in price, rental or other conditions, withdrawal without notice, and to any special listing conditions imposed by the principals. Licensed in Louisiana & Mississippi.



SAURAGE ROTENBERG™
COMMERCIAL REAL ESTATE

FOR SALE
OFFICE/WAREHOUSE, HEART OF BR HEALTH DISTRICT
8377 PICARDY AVENUE, BATON ROUGE, LA 70809

12,513 SF



MIKE STINSON, CCIM
Commercial Sales & Leasing
(D)225.907.7793
mike@sr-cre.com

SAURAGE ROTENBERG COMMERCIAL REAL ESTATE, LLC
5135 Bluebonnet Boulevard
Baton Rouge, LA 70809
225.766.0000 | sauragerotenberg.com

The information contained herein has either been given to us by property owners or is from sources deemed reliable and is believed to be correct, it is not in any way warranted or guaranteed by Saurage Rotenberg Commercial Real Estate. This information is submitted subject to errors, omissions, changes in price, rental or other conditions, withdrawal without notice, and to any special listing conditions imposed by the principals. Licensed in Louisiana & Mississippi.



SAURAGE ROTENBERG™
COMMERCIAL REAL ESTATE

FOR SALE
OFFICE/WAREHOUSE, HEART OF BR HEALTH DISTRICT
8377 PICARDY AVENUE, BATON ROUGE, LA 70809

12,513 SF



MIKE STINSON, CCIM
Commercial Sales & Leasing
(D)225.907.7793
mike@sr-cre.com

SAURAGE ROTENBERG COMMERCIAL REAL ESTATE, LLC
5135 Bluebonnet Boulevard
Baton Rouge, LA 70809
225.766.0000 | sauragerotenberg.com

The information contained herein has either been given to us by property owners or is from sources deemed reliable and is believed to be correct, it is not in any way warranted or guaranteed by Saurage Rotenberg Commercial Real Estate. This information is submitted subject to errors, omissions, changes in price, rental or other conditions, withdrawal without notice, and to any special listing conditions imposed by the principals. Licensed in Louisiana & Mississippi.



SAURAGE ROTENBERG™
COMMERCIAL REAL ESTATE

FOR SALE
OFFICE/WAREHOUSE, HEART OF BR HEALTH DISTRICT
8377 PICARDY AVENUE, BATON ROUGE, LA 70809

12,513 SF



MIKE STINSON, CCIM
Commercial Sales & Leasing
(D)225.907.7793
mike@sr-cre.com

SAURAGE ROTENBERG COMMERCIAL REAL ESTATE, LLC
5135 Bluebonnet Boulevard
Baton Rouge, LA 70809
225.766.0000 | sauragerotenberg.com

The information contained herein has either been given to us by property owners or is from sources deemed reliable and is believed to be correct, it is not in any way warranted or guaranteed by Saurage Rotenberg Commercial Real Estate. This information is submitted subject to errors, omissions, changes in price, rental or other conditions, withdrawal without notice, and to any special listing conditions imposed by the principals. Licensed in Louisiana & Mississippi.

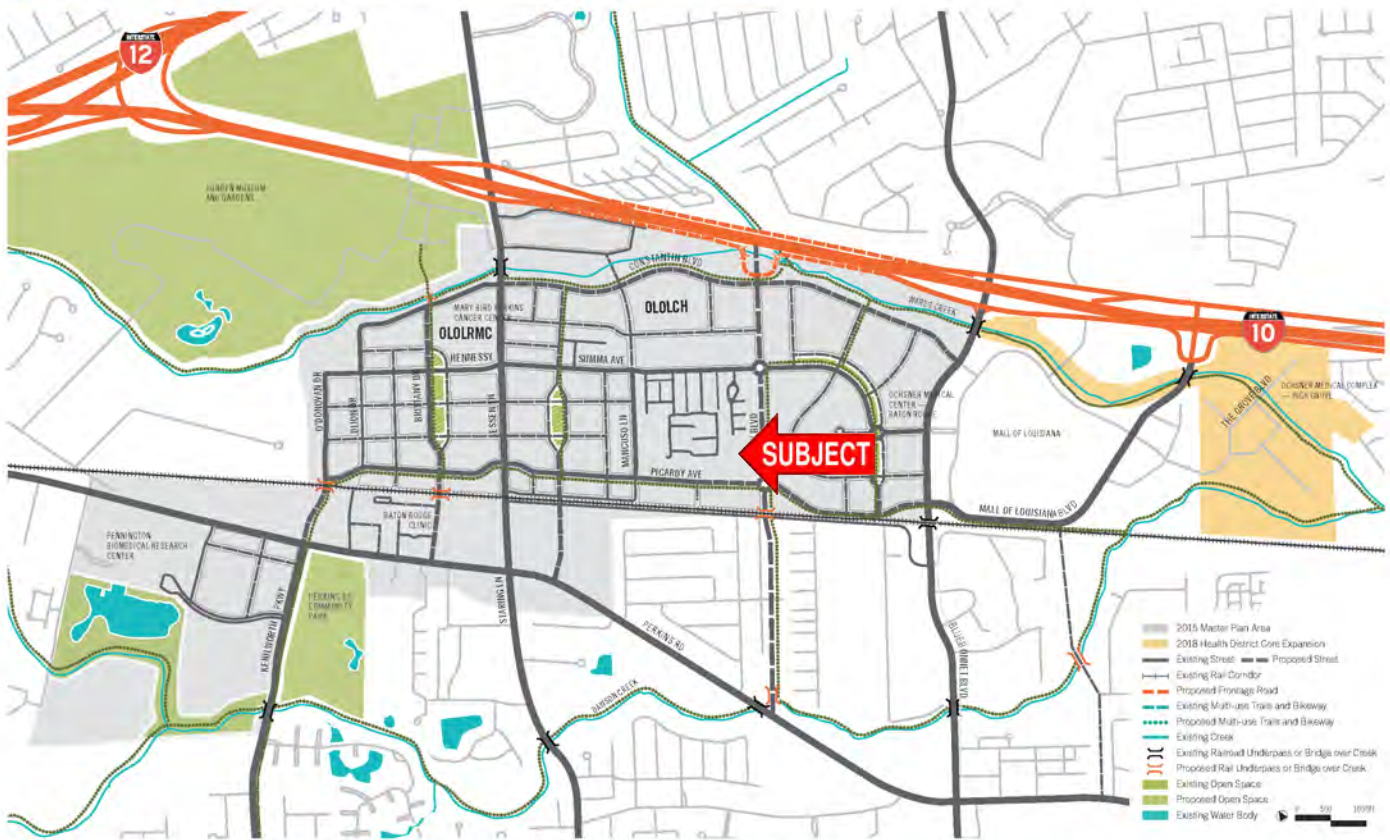


SAURAGE ROTENBERG™
COMMERCIAL REAL ESTATE

BATON ROUGE HEALTH DISTRICT MAP
OFFICE/WAREHOUSE, HEART OF BR HEALTH DISTRICT
8377 PICARDY AVENUE, BATON ROUGE, LA 70809

12,513 SF

BATON ROUGE HEALTH DISTRICT / 2015 MASTER PLAN / FUTURE STREET AND LANDSCAPE FRAMEWORK PLAN*



* Street network updated from Master Plan to reflect planned construction of streets in and around the new Our Lady of the Lake Children's Hospital (OLOLCH) campus.

BATON ROUGE HEALTH DISTRICT
Infrastructure Implementation Plan

2018 EXPANDED DISTRICT

Map courtesy of BATON ROUGE HEALTH DISTRICT (www.brhealthdistrict.com)

MIKE STINSON, CCIM
Commercial Sales & Leasing
(D)225.907.7793
mike@sr-cre.com

SAURAGE ROTENBERG COMMERCIAL REAL ESTATE, LLC
5135 Bluebonnet Boulevard
Baton Rouge, LA 70809
225.766.0000 | sauragerotenberg.com

The information contained herein has either been given to us by property owners or is from sources deemed reliable and is believed to be correct, it is not in any way warranted or guaranteed by Saurage Rotenberg Commercial Real Estate. This information is submitted subject to errors, omissions, changes in price, rental or other conditions, withdrawal without notice, and to any special listing conditions imposed by the principals. Licensed in Louisiana & Mississippi.



SAURAGE ROTENBERG™
COMMERCIAL REAL ESTATE

DRIVE TIME MAP OFFICE/WAREHOUSE, HEART OF BR HEALTH DISTRICT

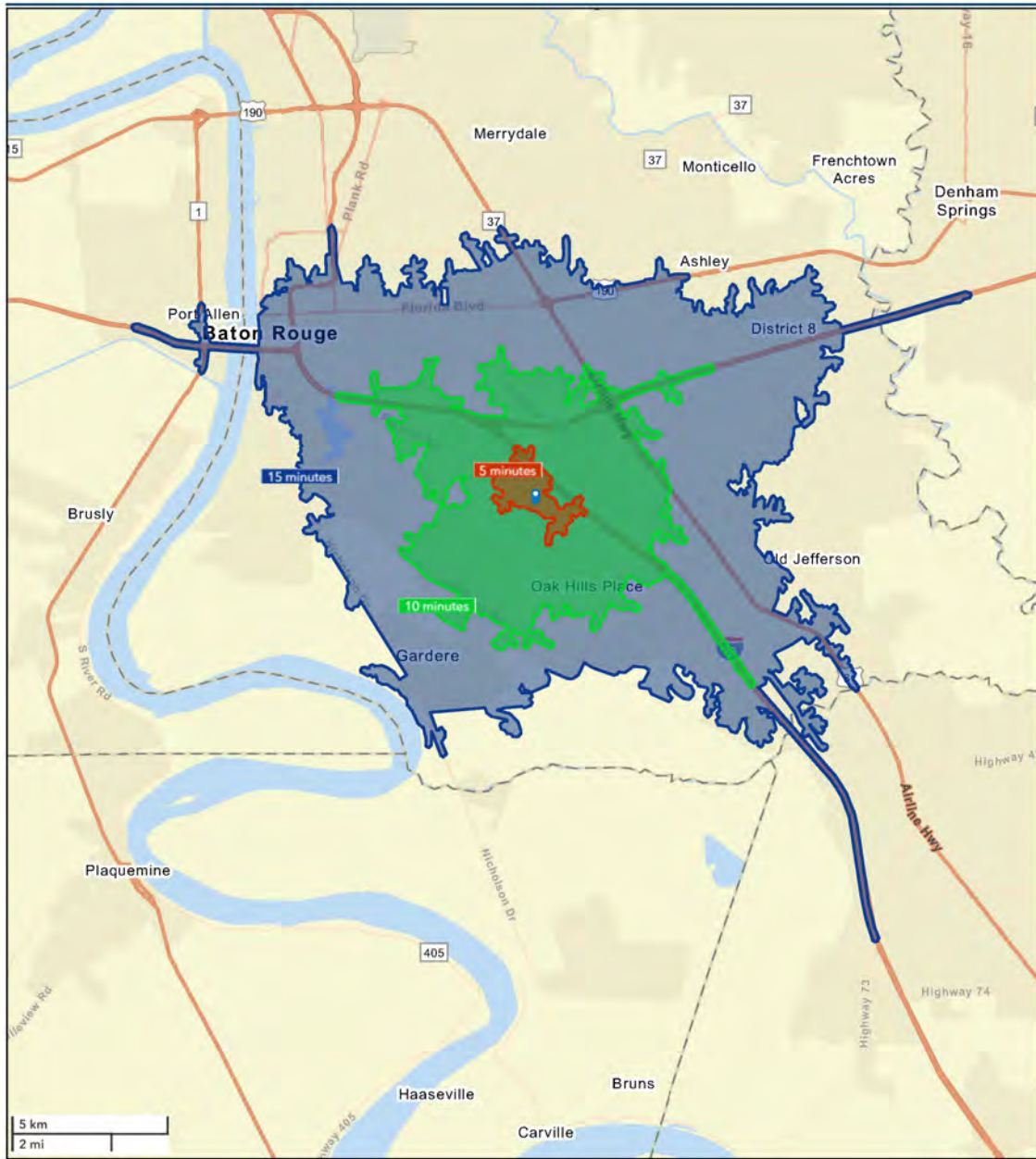
8377 PICARDY AVENUE, BATON ROUGE, LA 70809

12,513 SF



Drive Time Map: 5, 10, 15 Minutes

8377 Picardy Ave., Baton Rouge, LA 70816



MIKE STINSON, CCIM
Commercial Sales & Leasing
(D)225.907.7793
mike@sr-cre.com

SAURAGE ROTENBERG COMMERCIAL REAL ESTATE, LLC
5135 Bluebonnet Boulevard
Baton Rouge, LA 70809
225.766.0000 | sauragerotenberg.com

The information contained herein has either been given to us by property owners or is from sources deemed reliable and is believed to be correct, it is not in any way warranted or guaranteed by Saurage Rotenberg Commercial Real Estate. This information is submitted subject to errors, omissions, changes in price, rental or other conditions, withdrawal without notice, and to any special listing conditions imposed by the principals. Licensed in Louisiana & Mississippi.



SAURAGE ROTENBERG™
COMMERCIAL REAL ESTATE

TRAFFIC COUNT MAP

OFFICE/WAREHOUSE, HEART OF BR HEALTH DISTRICT

8377 PICARDY AVENUE, BATON ROUGE, LA 70809

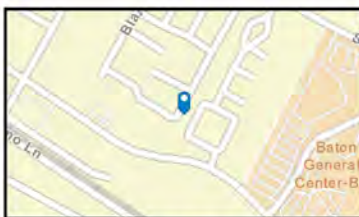
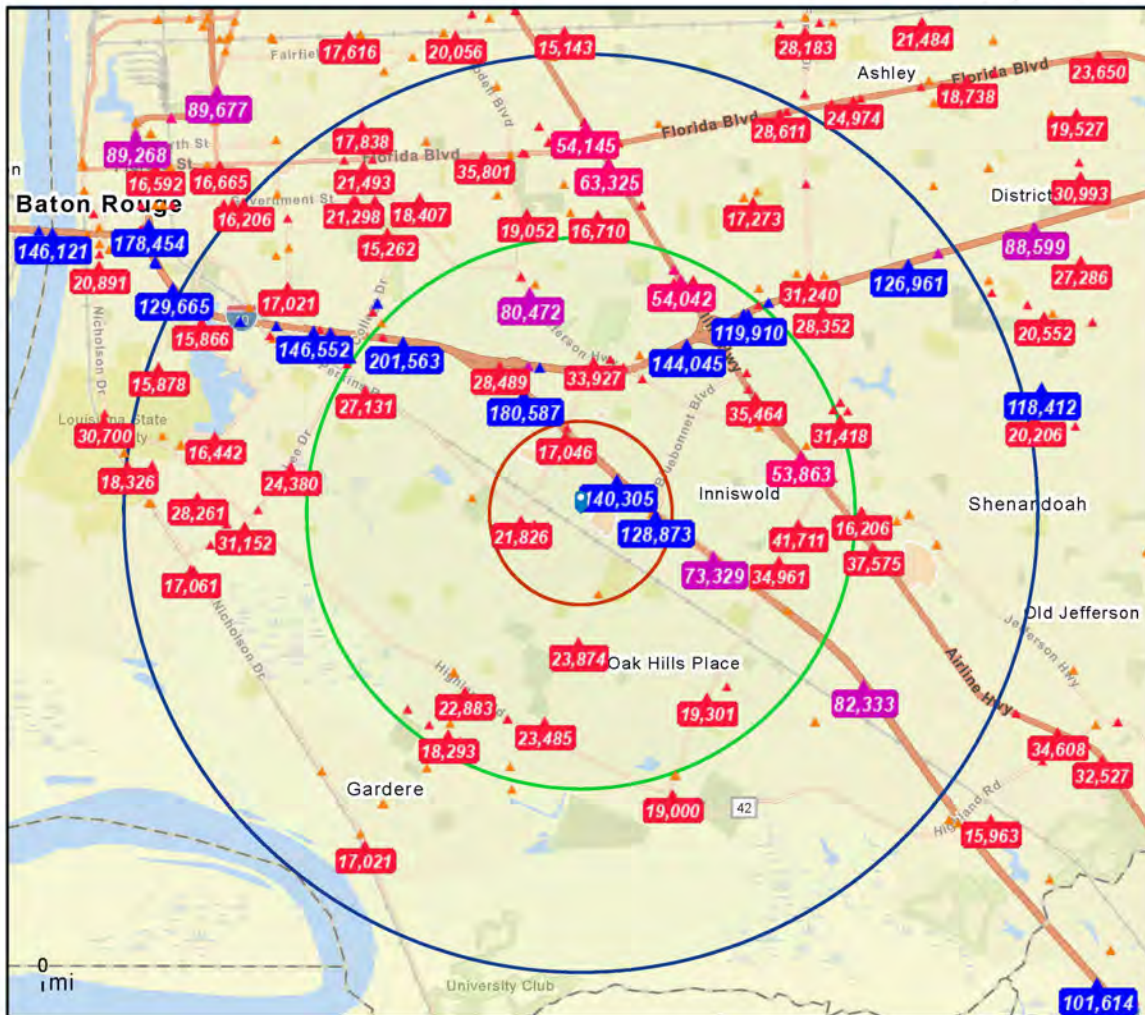
12,513 SF



Traffic Count Map

8377 Picardy Ave, Baton Rouge, Louisiana, 70809
Rings: 1, 3, 5 mile radii

Prepared by Esri
Latitude: 30.39492
Longitude: -91.09911



Average Daily Traffic Volume
▲ Up to 6,000 vehicles per day
▲ 6,001 - 15,000
▲ 15,001 - 30,000
▲ 30,001 - 50,000
▲ 50,001 - 100,000
▲ More than 100,000 per day



MIKE STINSON, CCIM
Commercial Sales & Leasing
(D)225.907.7793
mike@sr-cre.com

SAURAGE ROTENBERG COMMERCIAL REAL ESTATE, LLC
5135 Bluebonnet Boulevard
Baton Rouge, LA 70809
225.766.0000 | sauragerotenberg.com

The information contained herein has either been given to us by property owners or is from sources deemed reliable and is believed to be correct, it is not in any way warranted or guaranteed by Saurage Rotenberg Commercial Real Estate. This information is submitted subject to errors, omissions, changes in price, rental or other conditions, withdrawal without notice, and to any special listing conditions imposed by the principals. Licensed in Louisiana & Mississippi.



SAURAGE ROTENBERG™
COMMERCIAL REAL ESTATE

OFFICE/WAREHOUSE, HEART OF BR HEALTH DISTRICT

8377 PICARDY AVENUE, BATON ROUGE, LA 70809

FLOOR PLAN

12,513 SF



MIKE STINSON, CCIM
Commercial Sales & Leasing
(D)225.907.7793
mike@sr-cre.com

SAURAGE ROTENBERG COMMERCIAL REAL ESTATE, LLC
5135 Bluebonnet Boulevard
Baton Rouge, LA 70809
225.766.0000 | sauragerotenberg.com

The information contained herein has either been given to us by property owners or is from sources deemed reliable and is believed to be correct, it is not in any way warranted or guaranteed by Saurage Rotenberg Commercial Real Estate. This information is submitted subject to errors, omissions, changes in price, rental or other conditions, withdrawal without notice, and to any special listing conditions imposed by the principals. Licensed in Louisiana & Mississippi.