

INDUSTRIAL SPACE FOR LEASE

705 Corporation Park, Schenectady, NY



PROPERTY DETAILS

Building SF:	8,900
Dock Doors:	3
Ceiling Height:	16'
Zoning:	Industrial
Year Built:	1943
Column Spacing:	20'x20'

PROPERTY SUMMARY

8,900 square feet of warehouse space strategically located in the Glenville Business and Technology Park in Schenectady, New York. The space is ideal choice for any logistics, manufacturing or distribution businesses with neighboring companies including among others Old Dominion Freight Line, Adirondack Bottling, International Paper, EWaste, Velocity Print and the US Department of Defense. The warehouse area has multiple dock door entrances, 16' ceiling clearance with 20'x20' column spacing and 2019 roof with a 20 year warranty . Contact our team to schedule your tour!

Silas Hathaway

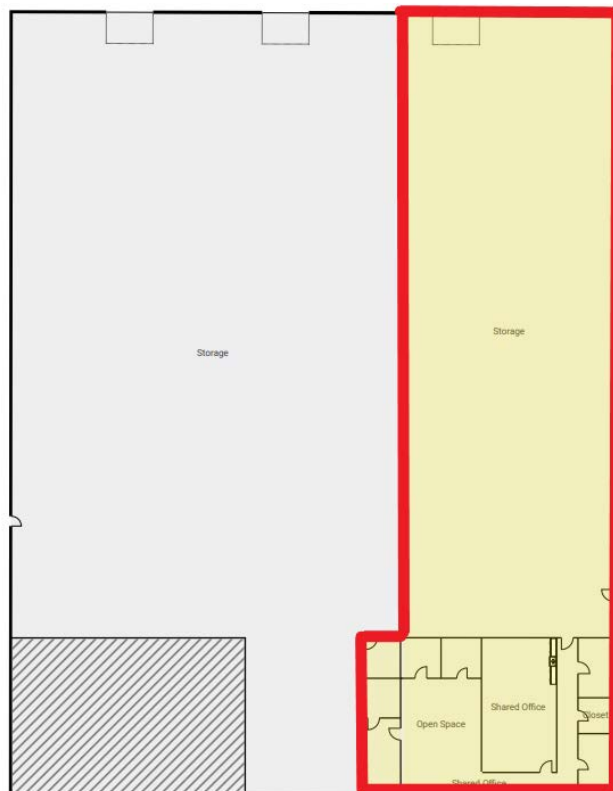
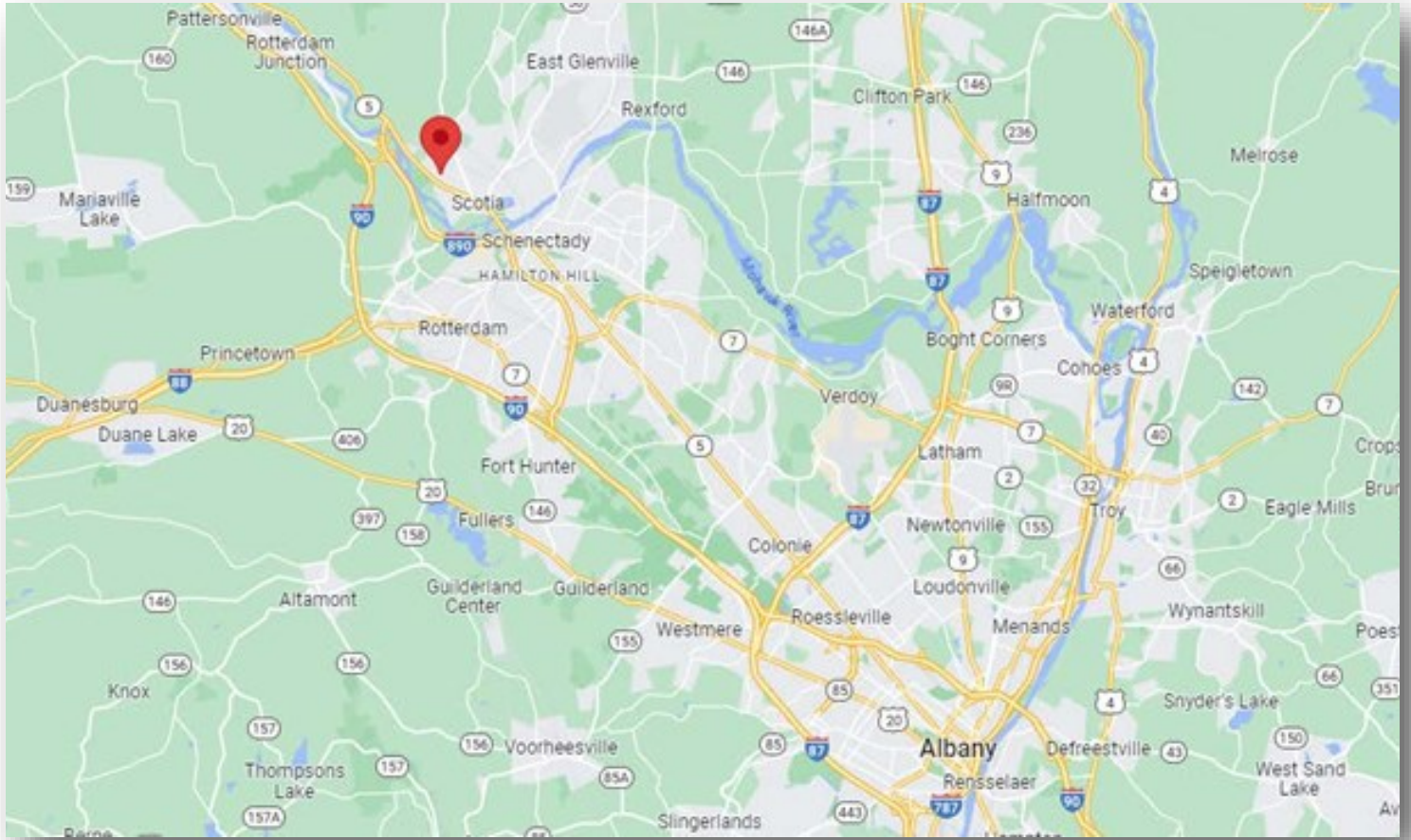
1.401.749.3031

Silas@IronhornEnterprises.com



INDUSTRIAL SPACE FOR LEASE

705 Corporation Park, Schenectady, NY



INDUSTRIAL SPACE FOR LEASE

705 Corporation Park, Schenectady, NY



Silas Hathaway

1.401.749.3031

Silas@IronhornEnterprises.com

www.IronhornEnterprises.com

