

# OFFICE CONDO FOR SALE



## 13677 BALTIMORE AVE Laurel, MD 20707

### PROPERTY HIGHLIGHTS

- 2nd floor office suite totaling 979 SF
- Features 5 private offices, kitchenette and in-suite restroom
- New LED lighting throughout
- Prime Route 1 visibility and access
- Zoned CGO
- Real Estate Taxes - \$2,561 annually (2025-2026)
- Near many amenities and shopping opportunities
- Close to major highways, including I-95, the Baltimore-Washington Parkway (Route 295), and the Intercounty Connector (MD 200)



**JESSICA VAZQUEZ**  
O: 301.918.2905  
jvazquez@naimichael.com

**ANDY MAYR, CCIM**  
O: 301.918.2919  
amayr@naimichael.com



10100 Business Pkwy | Lanham, MD 20706 | +1 301.459.4400 | [naimichael.com](https://naimichael.com)




The information contained herein has been given to us by the owner of the property or other sources we deem reliable. We have no reason to doubt its accuracy, but we do not guarantee it. Floor plans, site plans and other graphic representations of this property have been reduced and reproduced, and are not necessarily to scale. All information should be verified prior to purchase or lease.



Office Condo For Sale  
13677 BALTIMORE AVE, LAUREL, MD 20707



DEMOGRAPHICS

			
	POPULATION	HOUSEHOLDS	AVG. HOUSEHOLD INCOME
1 Mile	19,625	7,715	\$116,974
3 Miles	83,481	31,044	\$122,753
5 Miles	193,845	70,104	\$136,385

Demographics data derived from AlphaMap



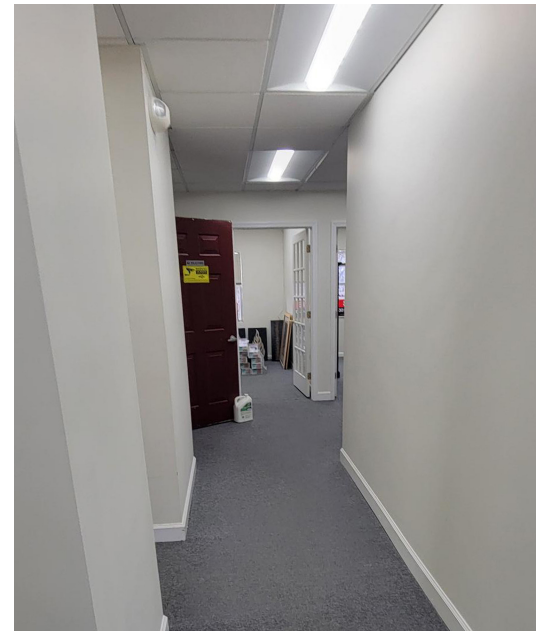
JESSICA VAZQUEZ  
301.918.2905 | jvazquez@naimichael.com

ANDY MAYR, CCIM  
301.918.2919 | amayr@naimichael.com

The information contained herein has been given to us by the owner of the property or other sources we deem reliable. We have no reason to doubt its accuracy, but we do not guarantee it. Floor plans, site plans and other graphic representations of this property have been reduced and reproduced, and are not necessarily to scale. All information should be verified prior to purchase or lease.



Office Building For Sale  
13677 BALTIMORE AVE, LAUREL, MD 20707



The information contained herein has been given to us by the owner of the property or other sources we deem reliable. We have no reason to doubt its accuracy, but we do not guarantee it. Floor plans, site plans and other graphic representations of this property have been reduced and reproduced, and are not necessarily to scale. All information should be verified prior to purchase or lease.

JESSICA VAZQUEZ  
301.918.2905 | [jvazquez@naimichael.com](mailto:jvazquez@naimichael.com)

ANDY MAYR, CCIM  
301.918.2919 | [amayr@naimichael.com](mailto:amayr@naimichael.com)