

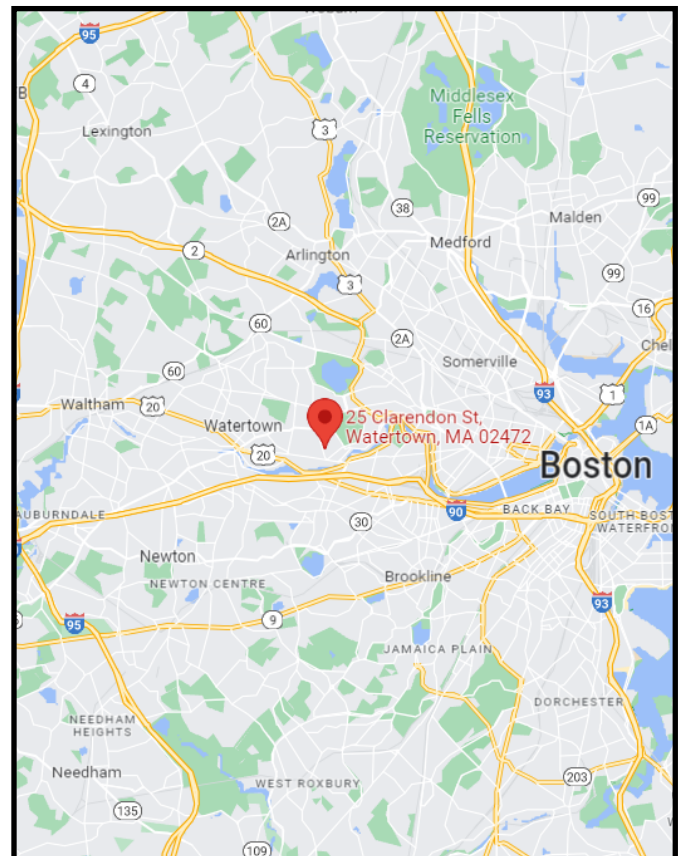


**25 CLARENDON STREET  
WATERTOWN, MASS.**

**2,200 –4,400 Sq.Ft.  
Flex/R&D Unit**

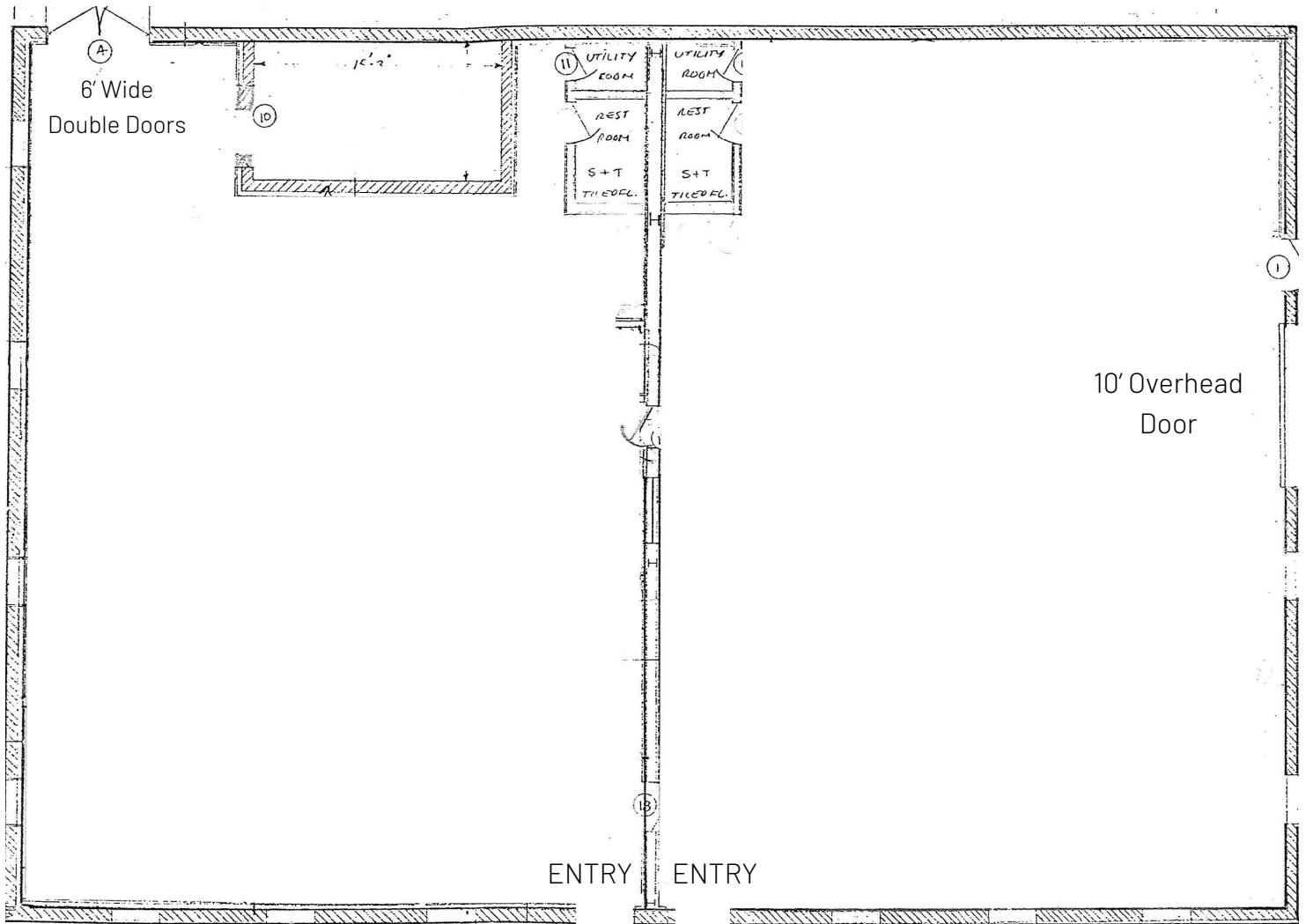
- Newly Renovated
- Polished Concrete Floors
- Exposed Ceiling
- Grade Level Loading
- Flexible Layout
- Ample Free Parking
- Easy Access to Boston, Cambridge & Suburbs

**IDEAL FOR WIDE RANGE OF R&D,  
ENGINEERING, and Hi-TECH USES**



25 CLARENDON STREET, WATERTOWN, MASS.

Current Layout: 2,200 – 4,400 Sq.Ft.



## Building Details

400 Amp Power (220V, 1 Ph)

12' Clear Height

New LED Lighting

2 Rooftop HVAC Units (one per side)

New Bathrooms