

# RENOVATED 1,090± SF OFFICE/RETAIL SPACE AVAILABLE IN WILLOW GLEN FOR LEASE

1020 Willow Street, San Jose, CA 95125



## DAVID TAXIN

Partner  
Lic. #00983163  
408.966.5919  
dtaxin@moinc.net

## BOBBY FACCHINO

Senior Associate  
Lic. #02178873  
408.318.0623  
bobby@moinc.net

MEACHAM/OPPENHEIMER, INC.  
8 N San Pedro St. #300  
San Jose, CA 95110  
Tel. 408.378.5900  
www.moinc.net







- 1,090± SF Office/Retail Space
- Rent is \$3.50 PSF plus NNN charges
- Zoning is Commercial Neighborhood (CN)
- Interior of the space has been renovated with brand new paint, flooring, and lights
- Three private offices
- One private bathroom
- Open floor plan at the entrance of the unit allowing for a receptionist area
- 5 parking spots
- HVAC
- Less than a quarter mile from Downtown Willow Glen
- Down the street from HWY 280 & 87

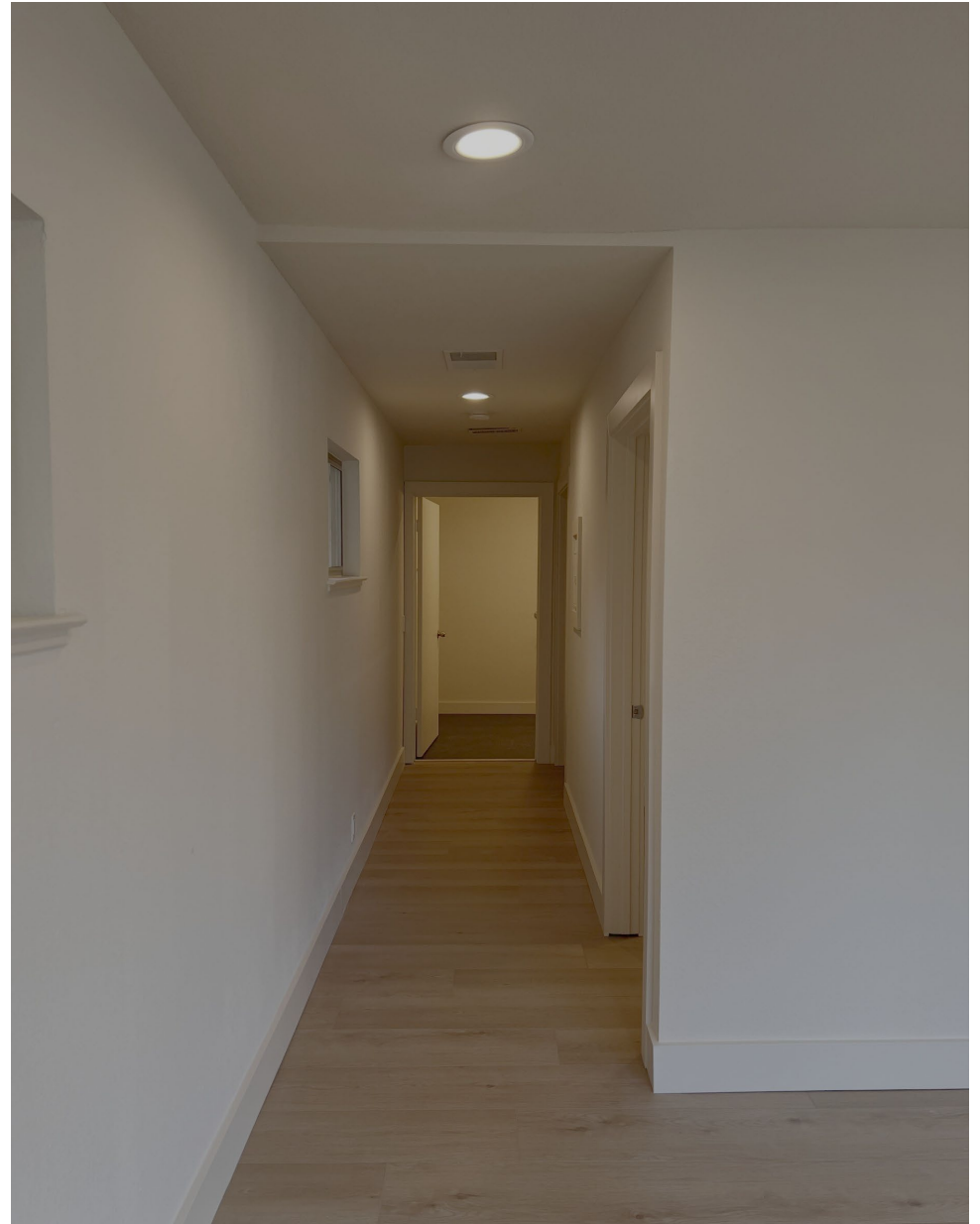


## INTERIOR PHOTOS





## INTERIOR PHOTOS





## INTERIOR PHOTOS





## EXTERIOR PHOTOS



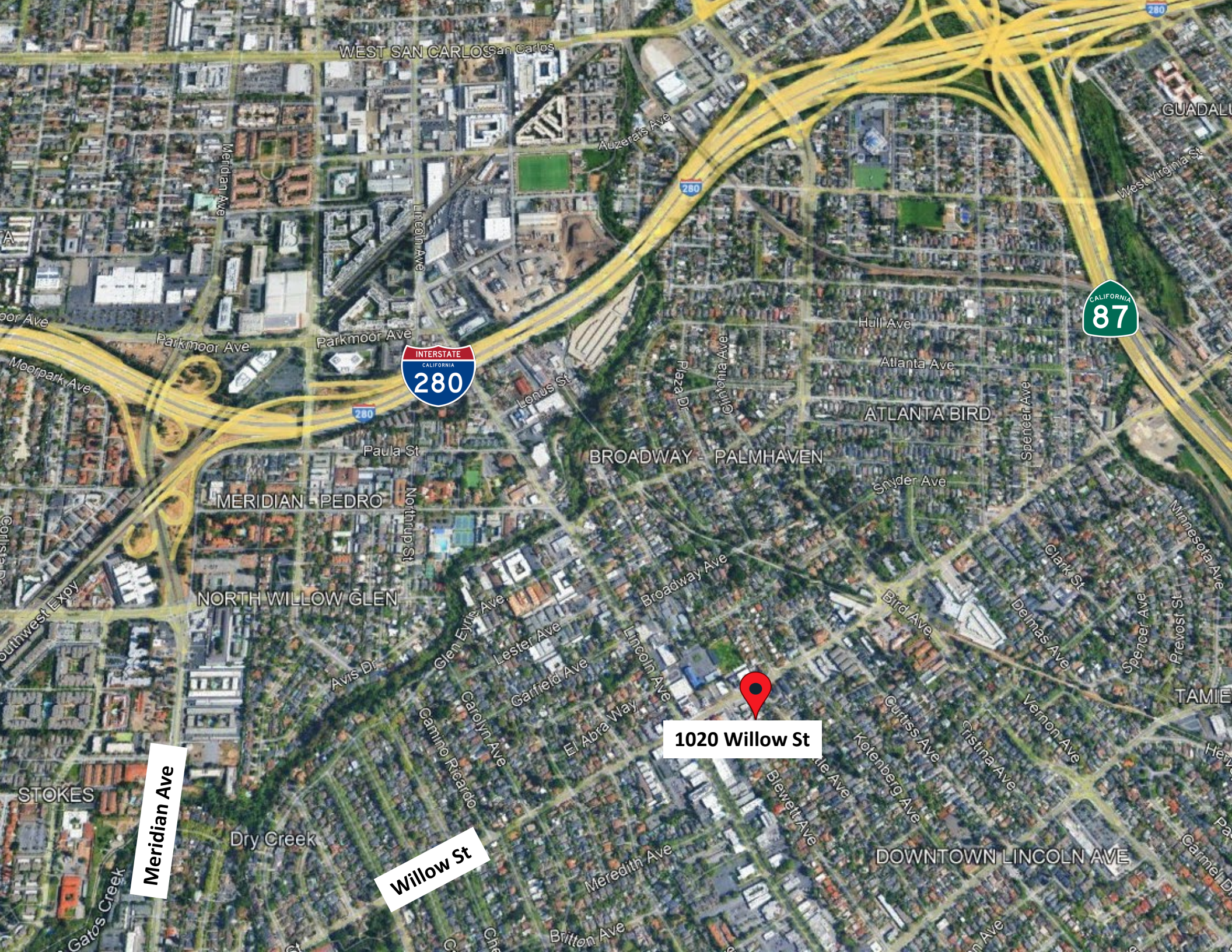


## DEMOGRAPHICS



2026 SUMMARY	1-MILE	3-MILE	5-MILE
Population	26,636	249,472	696,187
Households	10,589	95,827	241,725
Average Household Size	2.47	2.49	2.80
Owner Occupied Housing Units	5,165	38,829	109,816
Renter Occupied Housing Units	5,424	56,998	131,909
Median Age	39.6	37.8	38.1
Median Household Income	\$161,976	\$127,039	\$131,171
Average Household Income	\$226,632	\$188,164	\$185,867





WEST SAN CARLOS

GUADALUPE



MERIDIAN - PEDRO

BROADWAY - PALMHAVEN

ATLANTA BIRD

NORTH WILLOW GLEN

STOKES

TAMIE

1020 Willow St

Meridian Ave

Willow St

DOWNTOWN LINCOLN AVE





**DAVID TAXIN**

Partner  
Lic. #00983163  
408.966.5919  
dtaxin@moinc.net

**BOBBY FACCHINO**

Senior Associate  
Lic. #02178873  
408.318.0623  
bobby@moinc.net

MEACHAM/OPPENHEIMER, INC.  
8 N San Pedro St. #300  
San Jose, CA 95110  
Tel. 408.378.5900  
www.moinc.net

