

# Residential Lot

Holly Rd., Phelan, CA 92371

## For Sale



**OFFERING ±5 ACRES \$40,000**

APN 3130-351-04 Level 5 acres fronting Holy Rd, near Sheep Creek Rd. north of Phelan Rd. Zoned PH/RL - Phelan/Pinion Hills Rural Living.

**ROB KURTH**

760.983.2591 [RKurth@KurschGroup.com](mailto:RKurth@KurschGroup.com)

BRE #01244413 Corporate BRE #01896143

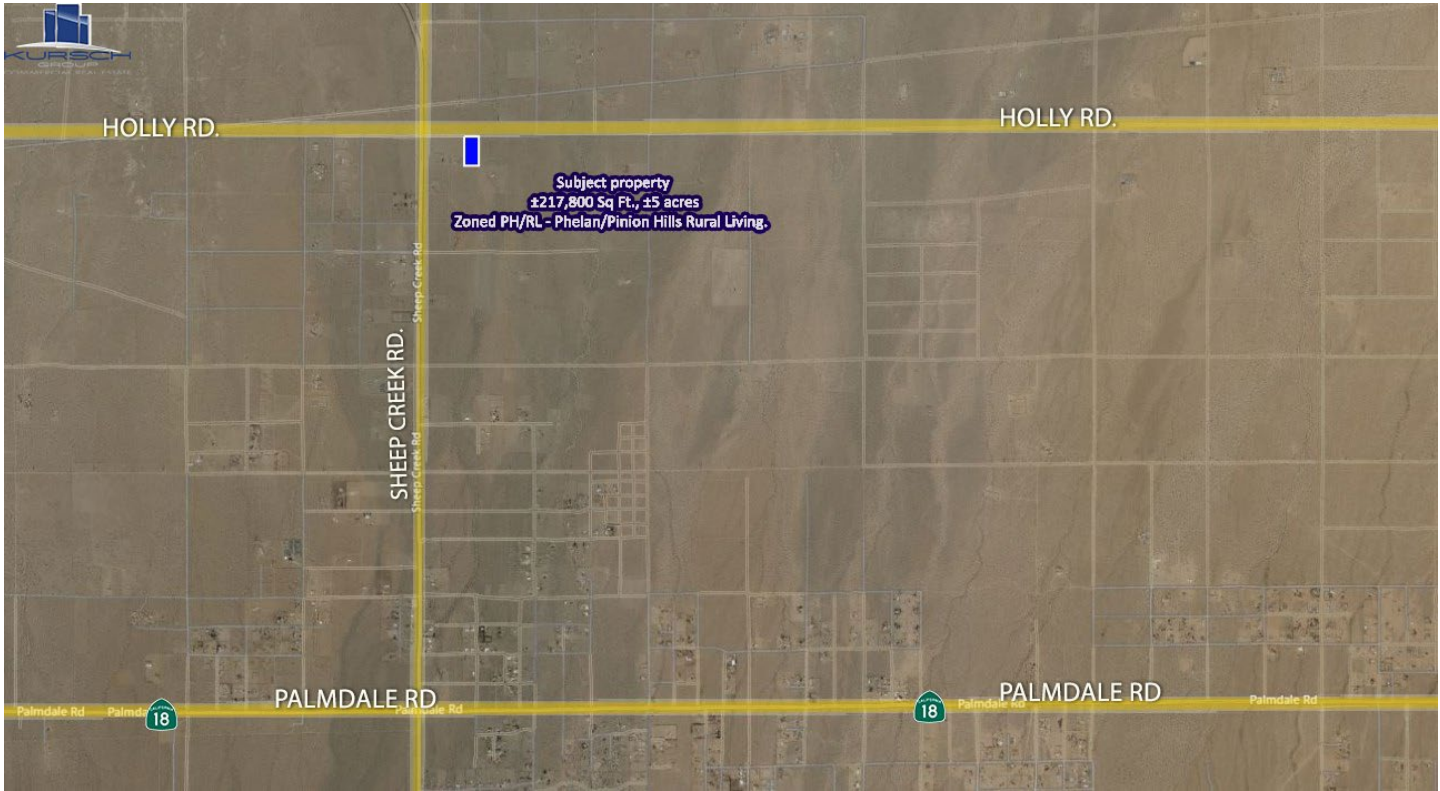


**KURSCH**  
GROUP

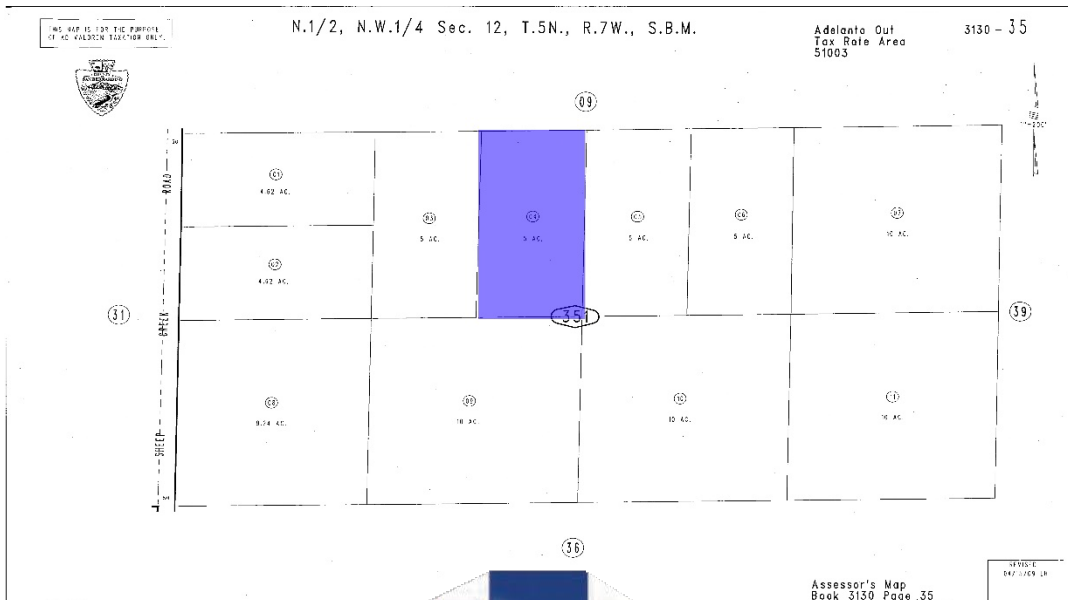
12180 Ridgecrest Rd, Suite 232, Victorville, CA 92395 -  
760.983.2383 - [www.KurschGroup.com](http://www.KurschGroup.com)

This information has been secured from sources we believe to be reliable. Kursch Group, Inc. and/or agents involved, make no representations or warranties, expressed or implied, as to the accuracy of the information. All information should be verified with another outside agency, government entity or property owner as applicable.

# Aerial



# Plat Map



**ROB KURTH**

760.983.2591 [RKurth@KurschGroup.com](mailto:RKurth@KurschGroup.com)  
BRE #01244413 Corporate BRE #01896143



**KURSCH**  
GROUP

12180 Ridgecrest Rd, Suite 232, Victorville, CA 92395 -  
760.983.2383 - [www.KurschGroup.com](http://www.KurschGroup.com)

This information has been secured from sources we believe to be reliable. Kursch Group, Inc. and/or agents involved, make no representations or warranties, expressed or implied, as to the accuracy of the information. All information should be verified with another outside agency, government entity or property owner as applicable.