

FOR LEASE | PROFESSIONAL OFFICES

Thomas Block | 100 Commercial Street, Portland, ME



THE THOMAS BLOCK

- Suites vary from 1,376± SF - 4,250± SF offices
- Historic brick and stone building
- Water views or Commercial Street views
- On-site property management
- Parking spaces available for lease at the Old Port Square Parking Garage

LEASE RATE: \$25.00- \$34.00/SF MG



PETER HARRINGTON

207.772.0088 D

207.318.8888 C

peter@malonecb.com

MALONE COMMERCIAL BROKERS

5 Moulton Street • Suite 3

Portland, ME 04101

PROPERTY SUMMARY

Thomas Block | 100 Commercial Street, Portland, ME



PROPERTY DETAILS

OWNER: Soley Wharf LLC

DEED: Book 14227, Page 74

ASSESSOR: Map 30, Block C, Lots 1-8

LOT SIZE: 0.35± AC

BUILDING SIZE: 61,657± SF

STORIES: Four (4)

YEAR BUILT: 1900

CONSTRUCTION: Fieldstone

ROOF: Flat

SIDING: Brick & stone

FLOOR: Hardwood floors, carpet & tile mix

CEILING HEIGHT: 10-12'±

ELECTRICITY: 100 amp

HVAC: Electric

UTILITIES: Municipal water and sewer

RESTROOMS: Second floor, in common area
Third and Fourth Floor, in suite

ELEVATOR: Yes

SIGNAGE: Directory board in lobby

ZONING: B3 Downtown Business District
PAD Pedestrian Activity Overlay

SECOND FLOOR

Thomas Block | 100 Commercial Street, Portland, ME



SUITE 202

SIZE: 1,596± SF

LAYOUT: Four offices, open area and reception, waterfront side

LEASE RATE: \$28.75/SF MG

SUITE 204/206

SIZE: 1,376± SF and 1,481± SF for a total of 2,857± SF

LAYOUT: Seven offices, conference room, open work space and kitchen, waterfront side

LEASE RATE: \$34.00/SF MG

AVAILABLE: June 1, 2026

THIRD FLOOR

Thomas Block | 100 Commercial Street, Portland, ME



SUITE 305/307

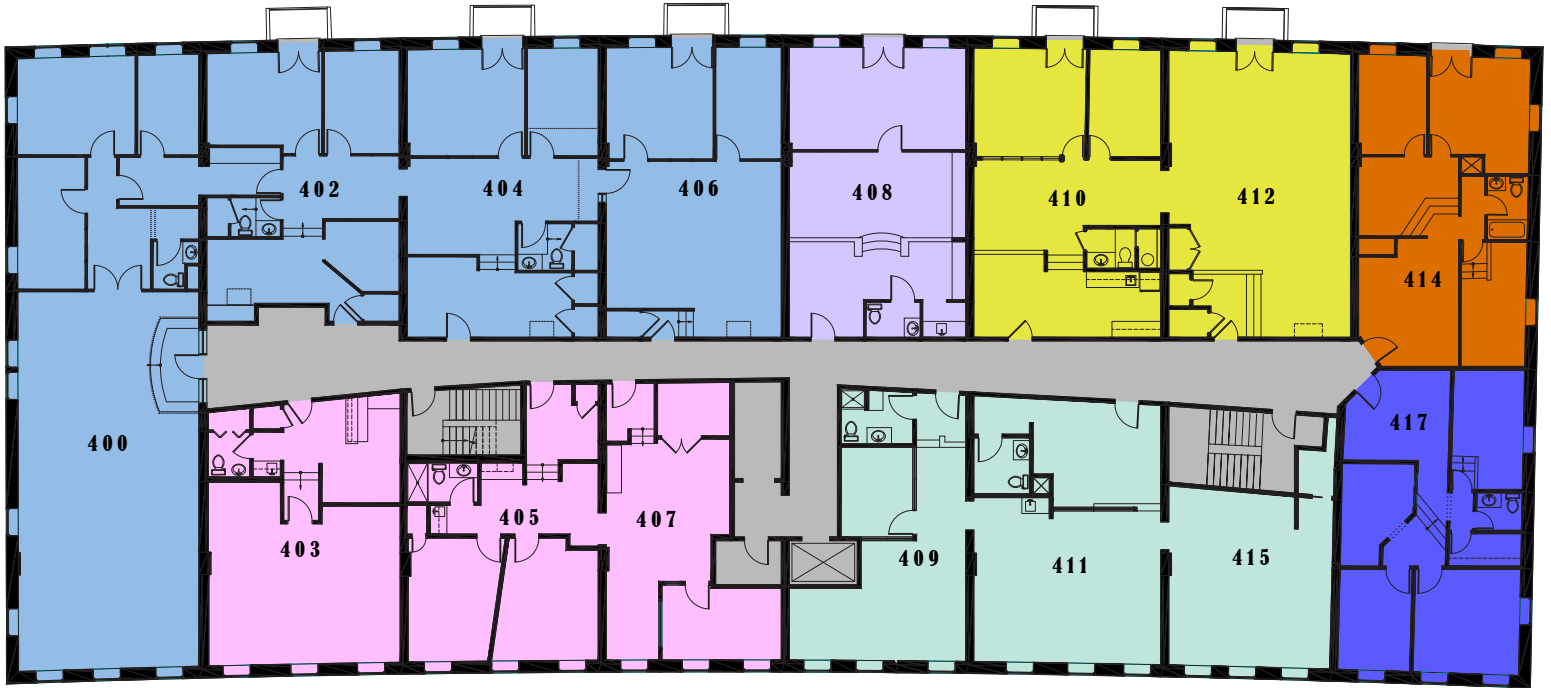
SIZE: 1,614± SF

LAYOUT: Four offices, storage room, kitchen, private restroom and reception

LEASE RATE: \$25.75/SF MG

FOURTH FLOOR

Thomas Block | 100 Commercial Street, Portland, ME



SUITE 403/405/407

SIZE: 2,592± SF

LAYOUT: Open & private offices, conference room & kitchenette

LEASE RATE: \$25.75/SF MG



FOURTH FLOOR

Thomas Block | 100 Commercial Street, Portland, ME

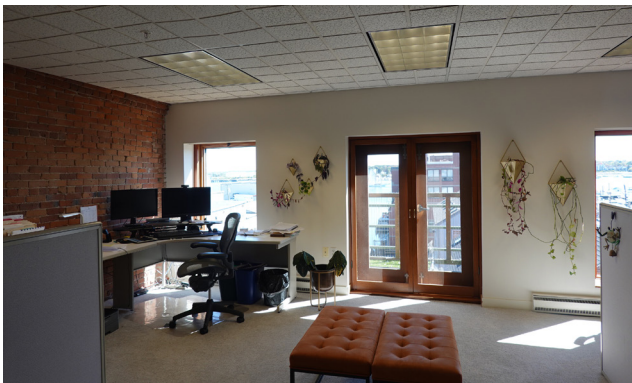


SUITE 410/412

SIZE: 2,050± SF

LAYOUT: Open area, private offices, reception, conference room, kitchen, private restroom, waterviews and balcony

LEASE RATE: \$25.00/SF MG thru 4/30/28



SUITE 411/415

SIZE: 1,532± SF

LAYOUT: Open concept with reception area, server room and one restroom

LEASE RATE: \$25.75/SF MG

FOR LEASE | PROFESSIONAL OFFICES

Thomas Block | 100 Commercial Street, Portland, ME



This document has been prepared by Malone Commercial Brokers for advertising and general information only. Malone Commercial Brokers makes no guarantees, representations or warranties of any kind, expressed or implied, regarding, but not limited to, warranties of content, accuracy, and reliability. Any interested party should undertake their own inquiries as to the accuracy of the information. Malone Commercial Brokers excludes unequivocally all informed or implied terms, conditions and warranties arising out of this document and excludes all liability for loss and damages there from. All data is subject to change of price, error, omissions, other conditions or withdrawal without notice. Malone Commercial Brokers is acting as the Seller's/Lessor's agent in the marketing of this property.



PETER HARRINGTON

207.772.0088 D

207.318.8888 C

peter@malonecb.com

MALONE COMMERCIAL BROKERS

5 Moulton Street • Suite 3

Portland, ME 04101

207.772.2422 • malonecb.com