

## FOR LEASE IN KINZIE CORRIDOR/WEST FULTON MARKET **3,690 SF LOFT OFFICE AVAILABLE**



3,690 SF loft office situated on the first floor of a beautifully renovated two-story building. Great workspace boasting exposed brick walls, wood floors, and a 14-foot ceiling, creating a comfortable environment filled with natural light from tall windows. The space comes with a fully-equipped kitchen and ADA-compliant entry. Designed for flexibility, the open floor plan is perfect for tech companies, R&D, or any creative office needs. Plus, benefit from 3-5 dedicated outdoor parking spots, with additional overflow options available. Less than 1 mile west of the bustling Fulton Market District, you'll have access to an array of dining and entertainment options. Commuting is an option with the Ashland Green/Pink Line only 0.3 miles away. Elevate your workspace and thrive in the heart of Chicago's Kinzie Corridor!

<b>Size:</b>	3,690 SF
<b>Floor:</b>	1st Floor
<b>Lease Price:</b>	\$22 PSF
<b>Rental Type:</b>	Modified Gross
<b>Zoning:</b>	PMD-4



**CRAIG WOLF**  
847-989-9653  
CRAIG@STRAUSSREALTY.COM

**STRAUSS REALTY, LTD.**  
4350 N. MILWAUKEE AVE.  
CHICAGO, ILLINOIS 60641  
PHONE: 773-736-3600



## INTERIOR



**CRAIG WOLF**  
847-989-9653  
CRAIG@STRAUSSREALTY.COM

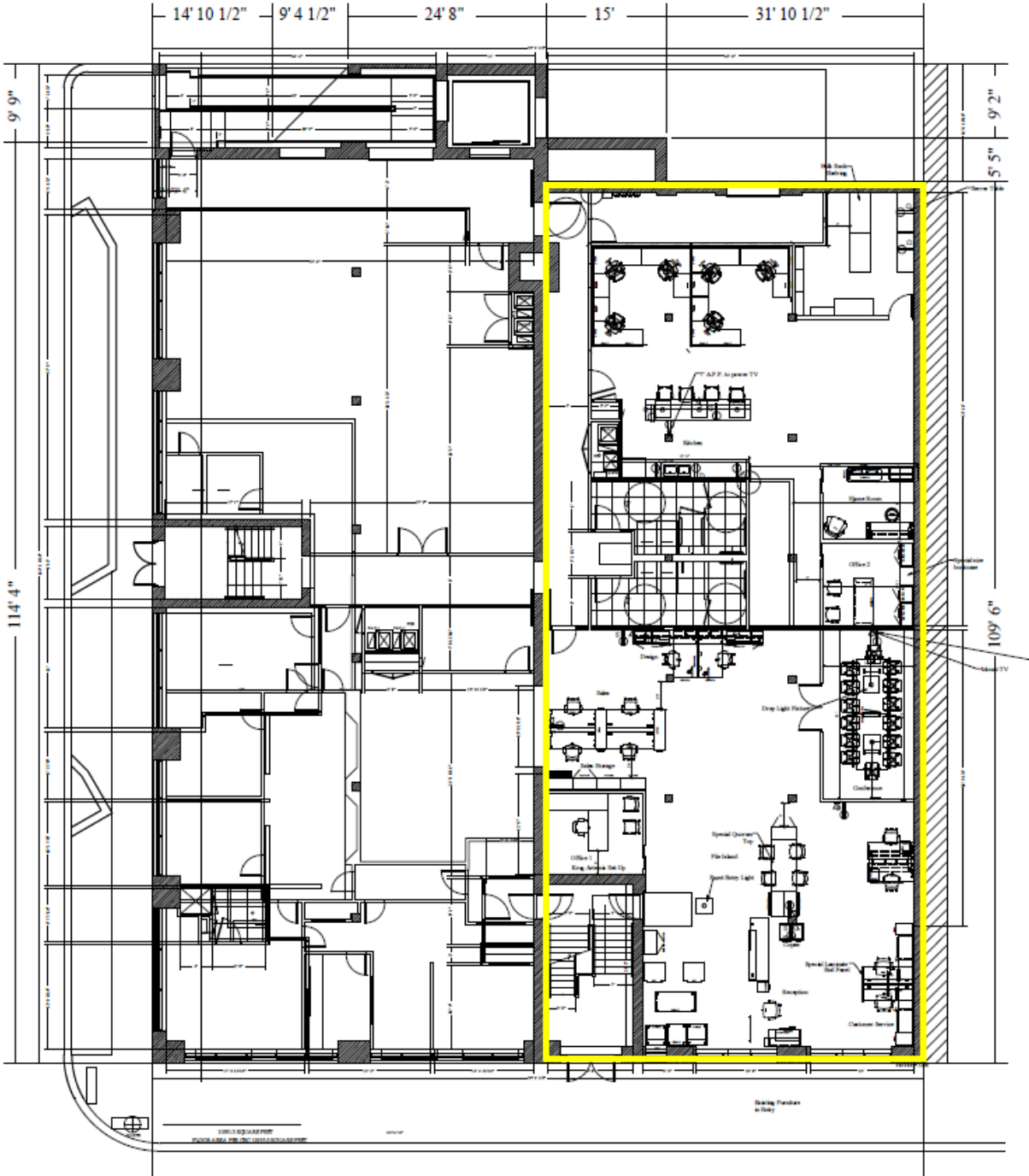
**STRAUSS REALTY, LTD.**  
4350 N. MILWAUKEE AVE.  
CHICAGO, ILLINOIS 60641  
PHONE: 773-736-3600

# STRAUSS

REALTY, LTD.

1750 W. FULTON ST.  
CHICAGO, ILLINOIS 60612

## LAYOUT



**CRAIG WOLF**  
847-989-9653  
CRAIG@STRAUSSREALTY.COM

**STRAUSS REALTY, LTD.**  
4350 N. MILWAUKEE AVE.  
CHICAGO, ILLINOIS 60641  
PHONE: 773-736-3600