

Excellent Midtown Location



Property Snapshot

- 636 Square Feet
- \$1,750/Month Full Service (Except Janitorial)
- Highly Visible from S. Virginia Street with over 19,000 CPD
- Easy walk or bike to numerous shops, restaurants bars and more
- Open floor plan
- Access to common area breakroom and conference room

Located in the heart of Midtown with excellent visibility on S. Virginia Street. This desirable area is home to numerous shops, restaurants, bars, and more with everything easily reachable by walking or biking. This suite is an open floor plan with access to a common area conference and kitchen/breakroom.



Sean French

Associate
seanf@archcrestnv.com
C: 775.997.8555
NV Lic S.0185456

Kevin Annis, SIOR, CCIM

Broker/Principal
kannis@archcrestnv.com
C: 775.742.2539
NV Lic B.1000617.LLC

Melanie Stewart

Transaction & Marketing Coordinator
mstewart@archcrestnv.com
P: 775.852.9800 x 205
NV Lic S.0061263

775.852.9800

www.archcrestnv.com

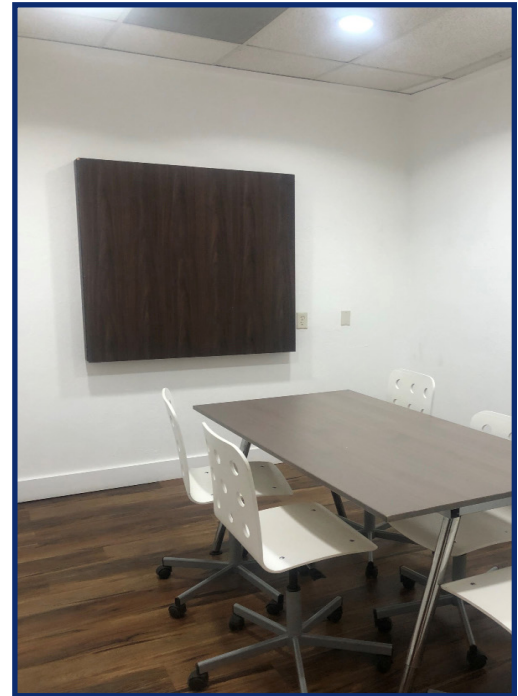
ARCHCREST

COMMERCIAL PARTNERS, LLC

For Lease

955 S. Virginia Street #202 | Reno

Excellent Midtown location



Sean french
Associate
sfrench@archcrestnv.com
C: 775.997.8555
NV Lic S.0785456

Kevin Annis, SIOR, CCIM
Broker/Principal
kannis@archcrestnv.com
C: 775.742.2539
NV Lic B.1000617.LLC

Melanie Stewart
Transaction Coordinator
mstewart@archcrestnv.com
P: 775.852.9800 x 205
NV Lic S.0061263

775.852.9800
www.archcrestnv.com

ArchCrest Commercial Partners • 5530 Reno Corporate Drive, Reno, NV 89511

The information contained herein was obtained from sources believed reliable; however, ArchCrest Commercial Partners makes no guarantees, warranties, or representations as to the completeness or accuracy thereof. The presentation of this property is submitted subject to errors, omissions, change of price or terms prior to sale or lease, or withdrawal without notice.