



Summary

Suite 83-B: 1,100 SF

Lease Rate: \$2,200/month + Elec & Clean

Property Highlights

- Features a waiting room, 3 offices, eat-in kitchen, and a private restroom
- Second-floor suite with an efficient layout
- Prime City of Fairfax location
- 24/7 access for full control of your space
- Ample free, unreserved parking
- Ideal for counseling, therapy, tutoring, or other professional services
- Ready to Occupy!

Demographics

2 Mile

5 Mile

10 Mile

Total Households: 18,050 98,538 383,511

Total Population: 56,229 278,865 1,065,577

Average HH Income: \$154,662 \$170,440 \$161,812

The information above was furnished to us by sources we believe to be reliable but no warranty or representation is made to its accuracy. It is your responsibility to independently confirm its accuracy and completeness. This offering is subject to correction or errors and omissions, change of pricing, prior to sale/lease or withdrawal from the market, without notice.

Mara Conners

703.435.4007 x 112

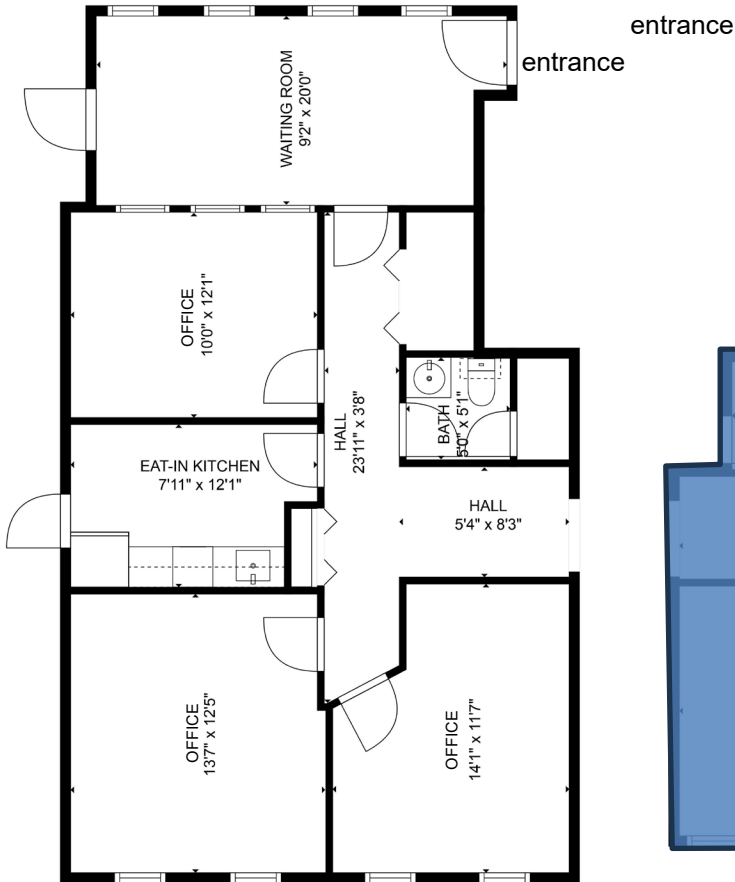
mconners@veritycommercial.com

Ellie Bechtle

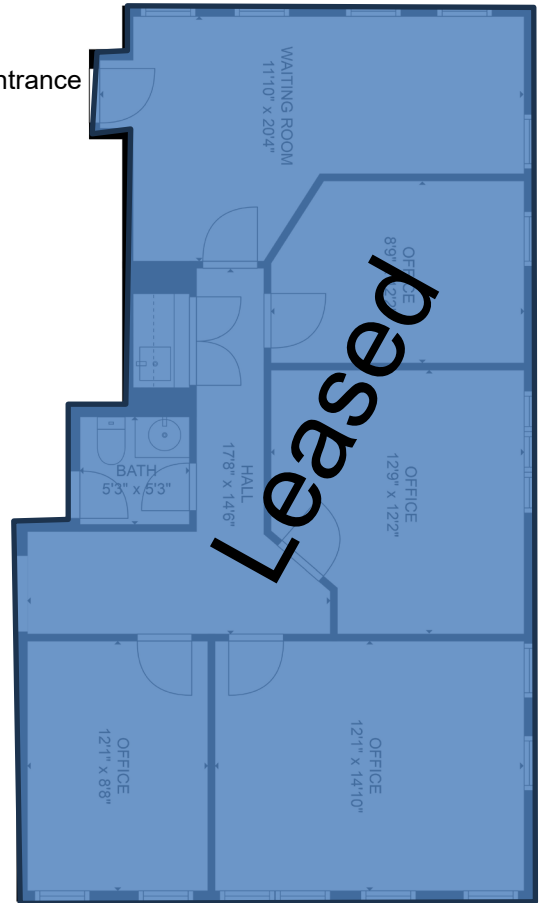
703.435.4007 x 107

ebechtle@veritycommercial.com

Parking lot



UNIT 83-B
 1,100 SF



UNIT 83-A
 1,100 SF

The information above was furnished to us by sources we believe to be reliable but no warranty or representation is made to its accuracy. It is your responsibility to independently confirm its accuracy and completeness. This offering is subject to correction or errors and omissions, change of pricing, prior to sale/lease or withdrawal from the market, without notice.

Mara Conners
 703.435.4007 x 112
mconners@veritycommercial.com

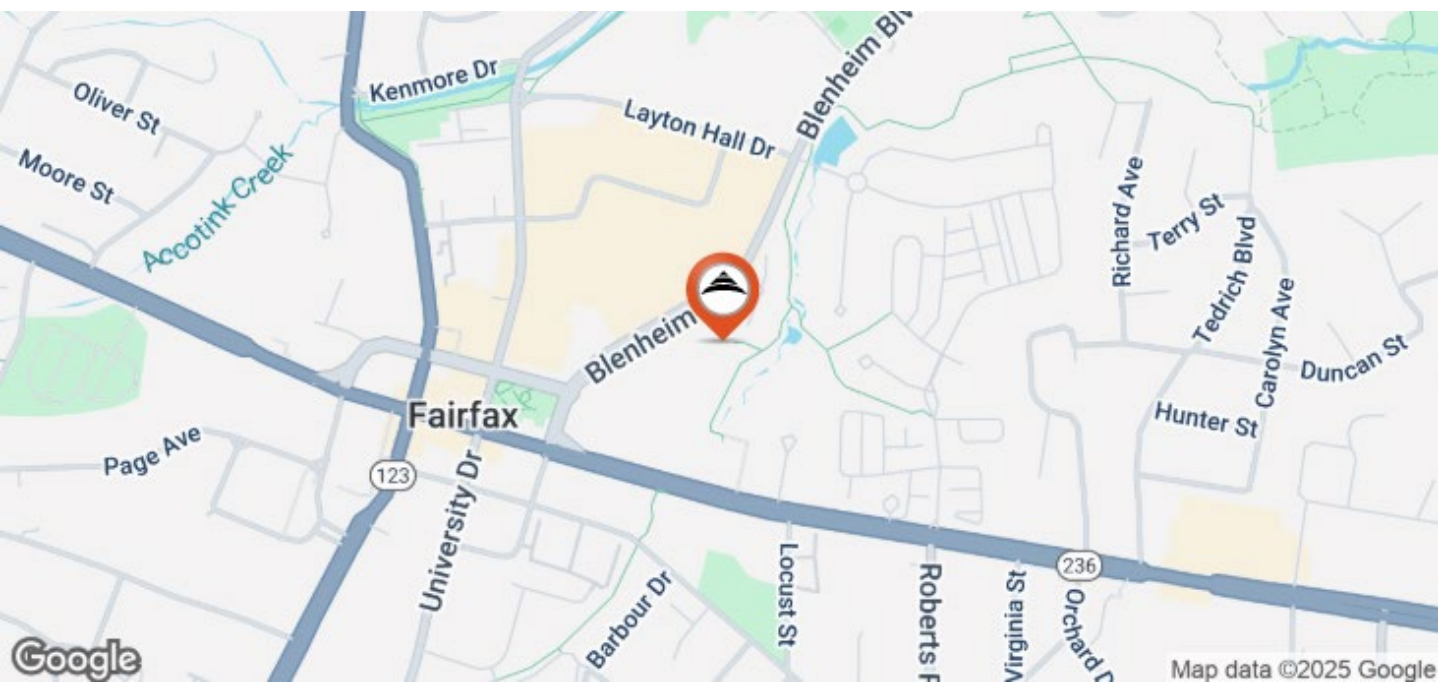
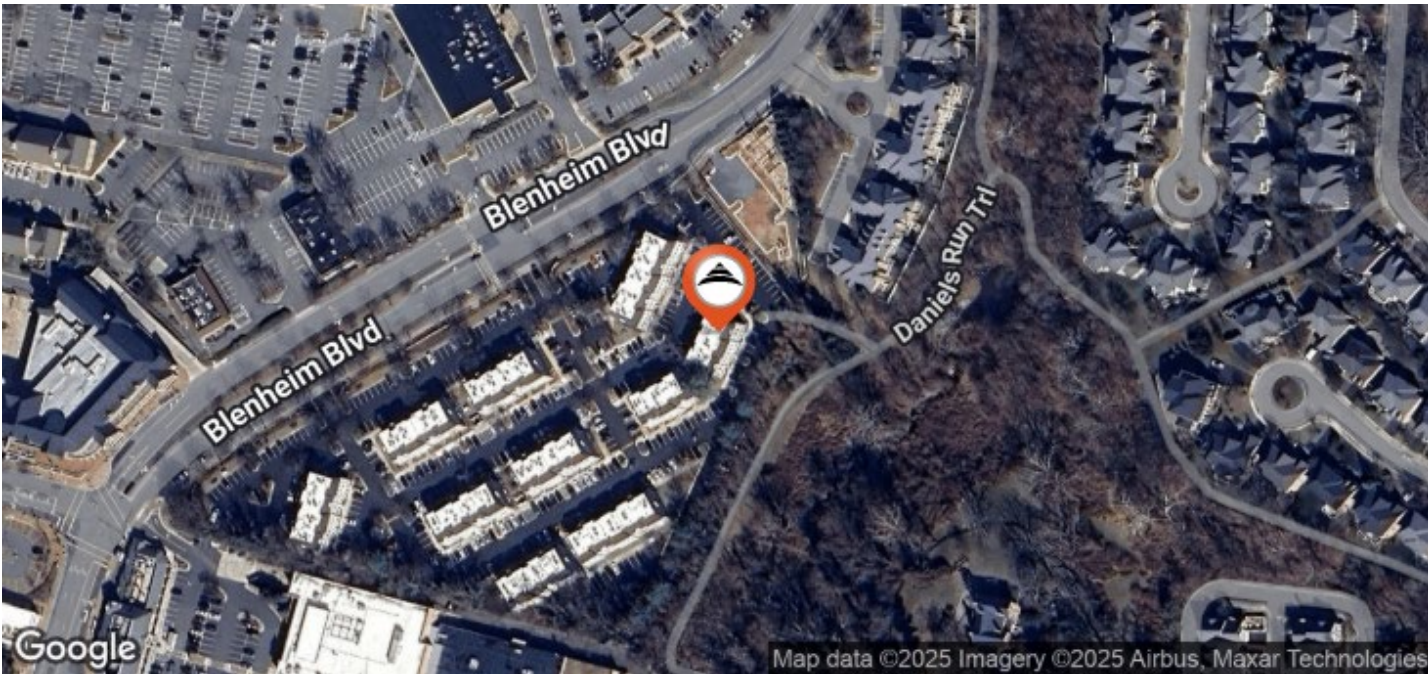
Ellie Bechtle
 703.435.4007 x 107
ebechtle@veritycommercial.com



The information above was furnished to us by sources we believe to be reliable but no warranty or representation is made to its accuracy. It is your responsibility to independently confirm its accuracy and completeness. This offering is subject to correction or errors and omissions, change of pricing, prior to sale/lease or withdrawal from the market, without notice.

Mara Conners
 703.435.4007 x 112
mconners@veritycommercial.com

Ellie Bechtle
 703.435.4007 x 107
ebechtle@veritycommercial.com



The information above was furnished to us by sources we believe to be reliable but no warranty or representation is made to its accuracy. It is your responsibility to independently confirm its accuracy and completeness. This offering is subject to correction or errors and omissions, change of pricing, prior to sale/lease or withdrawal from the market, without notice.

Mara Conners
 703.435.4007 x 112
mconners@veritycommercial.com

Ellie Bechtle
 703.435.4007 x 107
ebechtle@veritycommercial.com