

FOR LEASE

# Prominent Main Street Retail/Office Space

1441 Main Street | Downtown Columbia, SC



**Tommy Johnson, SIOR**  
Vice President | Leasing Agent  
+1 803 401 4228  
tommy.johnson@colliers.com

14  
41  
MAIN



FOR LEASE

## Rare corner space available in the heart of Main Street

This ±6,069-SF ground-level space at 1441 Main Street offers excellent views of Main Street and high levels of foot traffic in the center of Columbia's Central Business District, the location for Soda City weekends and many seasonal events.

### OPPORTUNITY

#### VISIBILITY

Centrally situated on Main Street for maximum visibility and accessibility to customers.

#### ENTERTAINMENT

Property is located within walking distance to restaurant, hotels, shopping, arts and attractions.

#### FITNESS

Tenants will enjoy access to building amenities including our fitness center with locker rooms and 24/7 availability.

#### FLEXIBILITY

Tenants have the opportunity to create a custom and flexible up-fit that is the right for their business.

#### PARKING

Adjacent parking opportunities include on-site visitor parking, covered parking & public parking.

#### ENGAGEMENT

The available space connects to the building's outdoor area and Main Street lobby, opening up more design possibilities.

14  
41  
MAIN

1441 Main is a ±265,000-square-foot Class A office tower situated at the corner of Main and Hampton Streets, directly opposite the Columbia Museum of Art. It's conveniently surrounded by excellent dining and lodging options including the on-site Spotted Salamander, Hampton Street Vineyard, Hotel Trundle, Columbia Marriott, and Sheraton.



Tailor a one-of-a-kind outdoor space

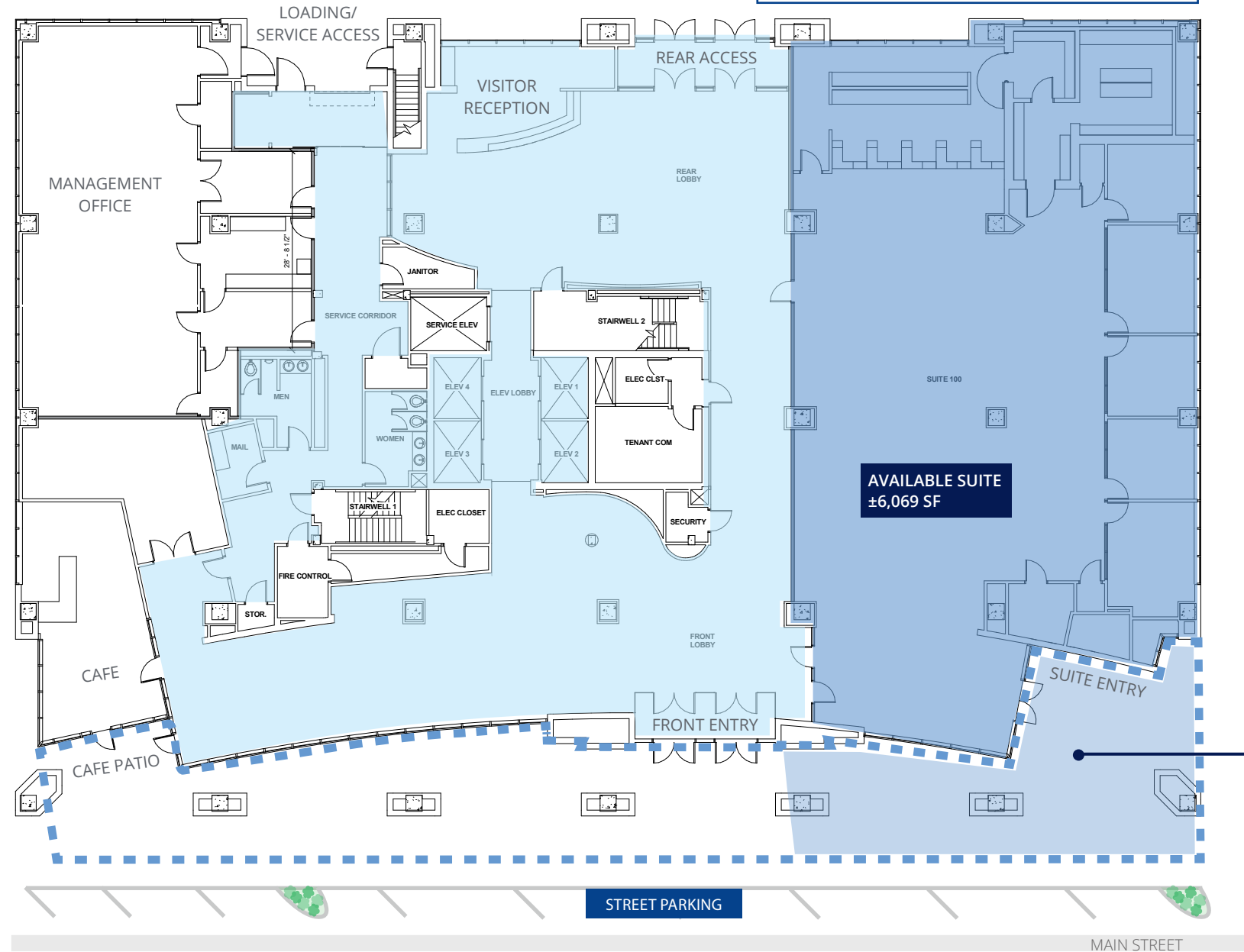


# First Floor

Suite 100 | ±6,069 SF

Available November 2024

- COMMON AREA
- BUILDING OUTDOOR PLAZA
- AVAILABLE SUITE
- AVAILABLE SUITE PLAZA



## LOCATION

Immerse yourself in the lively arts district on Main Street. 1441 Main is within walking distance to performing arts theaters, museums, public art displays, historic movie theaters and musical auditoriums. Additionally, just steps outside the building you can participate in Soda City Market on Saturdays, First Thursday in the summer and many more events throughout the year including festivals, live music and parades.

## DEMOGRAPHICS 2024 *est.*

	1 mile	3 miles	5 miles
Total Population	15,960	85,802	169,393
Number of Households	5,406	38,507	75,810
Daytime Population	64,405	157,975	253,558
Businesses	2,865	6,775	10,129
Employees	55,044	107,429	156,693

## DOWNTOWN COLUMBIA



±174

Restaurants  
1 mile radius



±43

Hotels &  
Multifamily Living

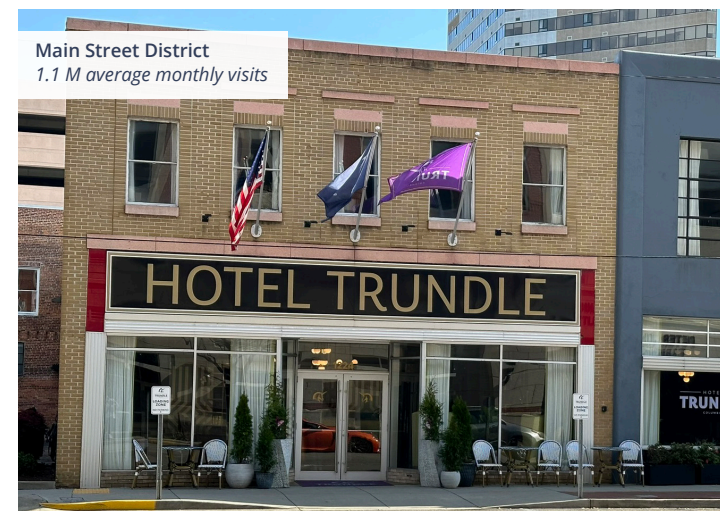


±2,865

Businesses  
1 mile radius



Image: Google Earth



Main Street District  
1.1 M average monthly visits



Soda City Market  
Over 5,000 visitors every week



University of South Carolina  
36,300 students (2023)



**Tommy Johnson, SIOR**  
Vice President | Leasing Agent  
+1 803 401 4228  
tommy.johnson@colliers.com

14  
41  
MAIN

