

**3725-3727 SE OCEAN BLVD,
SEWALL'S POINT, FL 34996**

**SEWALL'S POINT
OFFICE PLAZA SUITES**



**FLORIDA
COMMERCIAL**

REAL ESTATE COMPANY



ALBERT BROWN

Sales Associate

T: 772.631.7989

E: albert@albertbrownre.com

**3725 - SUITE 203 / 1,225 SF
3727 - SUITE 202/203 / 1,452 SF**

309 SE Osceola Street #104 • Stuart, FL 34994 • 772.223.3646 • florida-commercial.net

©Florida Commercial 2021 • This offering is subject to errors, prior to sale/lease, withdrawal, or change in price, terms or conditions without notice.

EXECUTIVE SUMMARY

3725-3727 SE OCEAN BLVD, SEWALL'S POINT, FL 34996 | SEWALL'S POINT OFFICE PLAZA SUITES

SPECS

Building 3725 / Suite 203:	1,225 SF / \$18 Per SF / GROSS
Building 3727 / Suite 202 / 203:	1,452 SF / \$18 Per SF / GROSS
2nd Floor Executive Suites:	150 SF Each / 1-7 Suites Available
Lot Size:	2.284 AC
Years Built:	1972 & 1984
Zoning:	B-2
Building Sizes:	17,614 & 18,674 SF

PROPERTY OVERVIEW

Discover office suite opportunities at 3725 and 3727 East Ocean Boulevard in the prestigious Sewall's Point Office Plaza. Both buildings feature two floors with elevators, welcoming lobbies, and abundant parking, offering a professional and convenient environment for your business. Positioned just steps from shopping and dining, close to Downtown Stuart, and only minutes from the beaches, these suites provide an outstanding setting for your next move.

3725 - Suite 203: This 1,225 SF second-floor suite features elevator access through a welcoming lobby, three private offices and a conference room (or up to five offices), a reception area, open workspace, and wood-look flooring. Move-in ready.

3727 - Suite 202/203: This 1,452 SF second-floor suite features elevator access through a welcoming lobby, with large open space. Move-in ready.



ALBERT BROWN
Sales Associate
T: 772.631.7989
E: albert@albertbrownre.com

3725 - SUITE 203 / 1,225 SF
3727 - SUITE 202/203 / 1,452 SF

BUILDING 3725 / SUITE 203



ALBERT BROWN
Sales Associate
T: 772.631.7989
E: albert@albertbrownre.com

3725 - SUITE 203 / 1,225 SF
3727 - SUITE 202/203 / 1,452 SF

BUILDING 3725 / SUITE 203

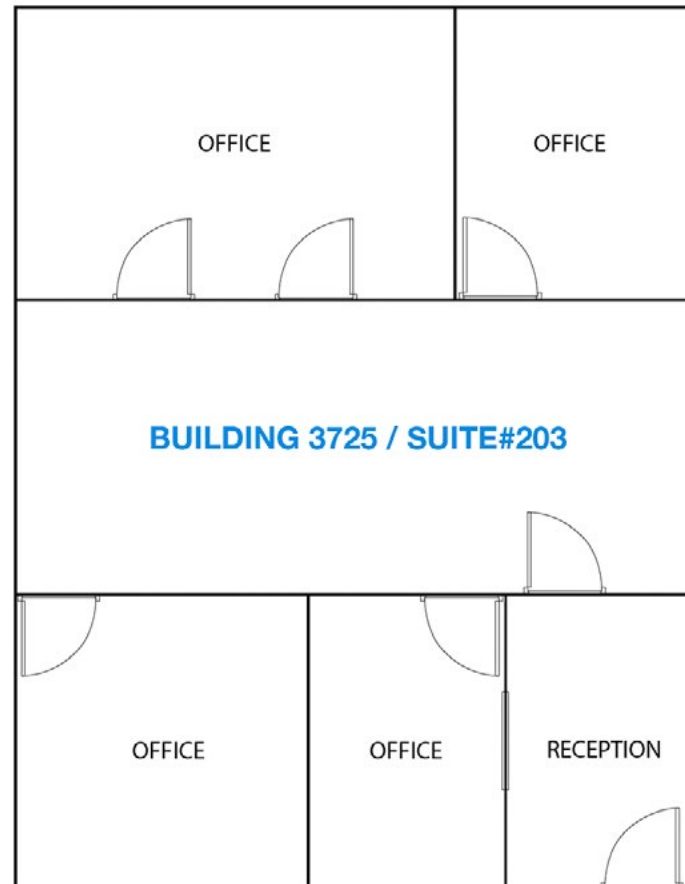


ALBERT BROWN
Sales Associate
T: 772.631.7989
E: albert@albertbrownre.com

3725 - SUITE 203 / 1,225 SF
3727 - SUITE 202/203 / 1,452 SF

FLOOR PLAN

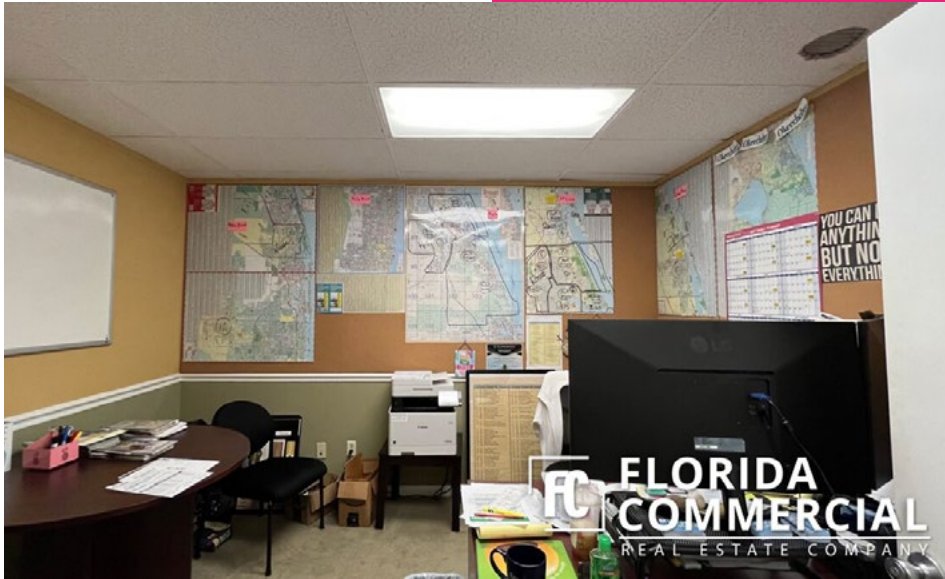
3725-3727 SE OCEAN BLVD, SEWALL'S POINT, FL 34996 | SEWALL'S POINT OFFICE PLAZA SUITES



ALBERT BROWN
Sales Associate
T: 772.631.7989
E: albert@albertbrownre.com

3725 - SUITE 203 / 1,225 SF
3727 - SUITE 202/203 / 1,452 SF

BUILDING 3727 / SUITE 202/203



ALBERT BROWN
Sales Associate
T: 772.631.7989
E: albert@albertbrownre.com

3725 - SUITE 203 / 1,225 SF
3727 - SUITE 202/203 / 1,452 SF

BUILDING 3727 / SUITE 202/203

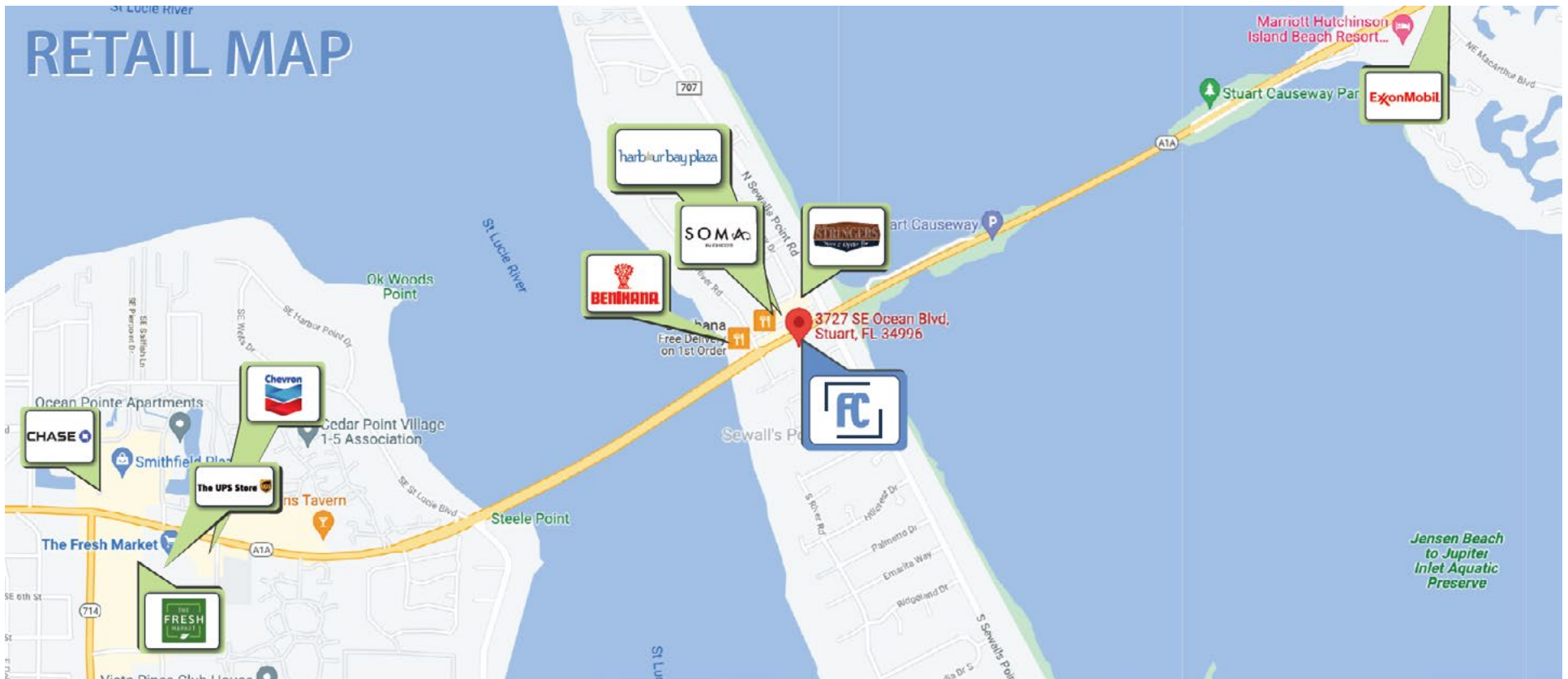


ALBERT BROWN
Sales Associate
T: 772.631.7989
E: albert@albertbrownre.com

3725 - SUITE 203 / 1,225 SF
3727 - SUITE 202/203 / 1,452 SF

RETAIL MAP

3725-3727 SE OCEAN BLVD, SEWALL'S POINT, FL 34996 | SEWALL'S POINT OFFICE PLAZA SUITES



ALBERT BROWN
Sales Associate
T: 772.631.7989
E: albert@albertbrownre.com

3725 - SUITE 203 / 1,225 SF
3727 - SUITE 202/203 / 1,452 SF

MAP & REPORT

3725-3727 SE OCEAN BLVD, SEWALL'S POINT, FL 34996 | SEWALL'S POINT OFFICE PLAZA SUITES



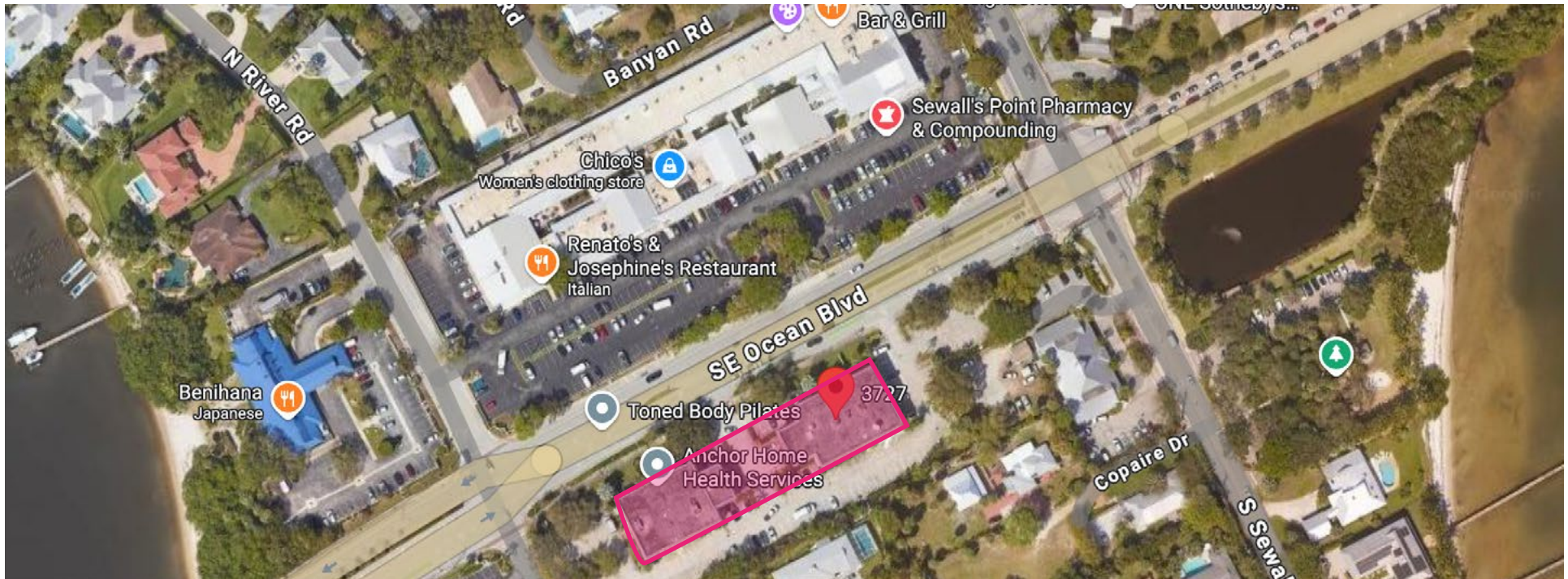
POPULATION

	1 MILE	3 MILES	5 MILES
Population	10.3K	43.2K	110.7K
Median Age	65.7	55.2	53.9



HOUSEHOLDS & INCOME

	1 MILE	3 MILES	5 MILES
Total Households	2.2K	13.2K	34.4K
# of Employees	9.7K	38.1K	96.3K
Average HH Income	\$85.7K	\$72.5K	\$7.4K



ALBERT BROWN
Sales Associate
T: 772.631.7989
E: albert@albertbrownre.com

3725 - SUITE 203 / 1,225 SF
3727 - SUITE 202/203 / 1,452 SF