



FOR LEASE

8344 BEVERLY BLVD

LOS ANGELES, CA 90048

**STEVE RAVAN**

tel - 323-782-1262 | [steveravan@southparkgroup.com](mailto:steveravan@southparkgroup.com) | DRE LICENSE #01747222

**MANE AJARYAN**

tel - 818-523-4997 | [mane@southparkgroup.com](mailto:mane@southparkgroup.com) | DRE LICENSE #02099173

# Property Overview

## FOR LEASE

8344 BEVERLY BLVD.  
LOS ANGELES, CA 90048

## USE

Retail / Light Food Use

## SIZE

± 2,000 SF (Divisible)

## RATE

Contact Agents

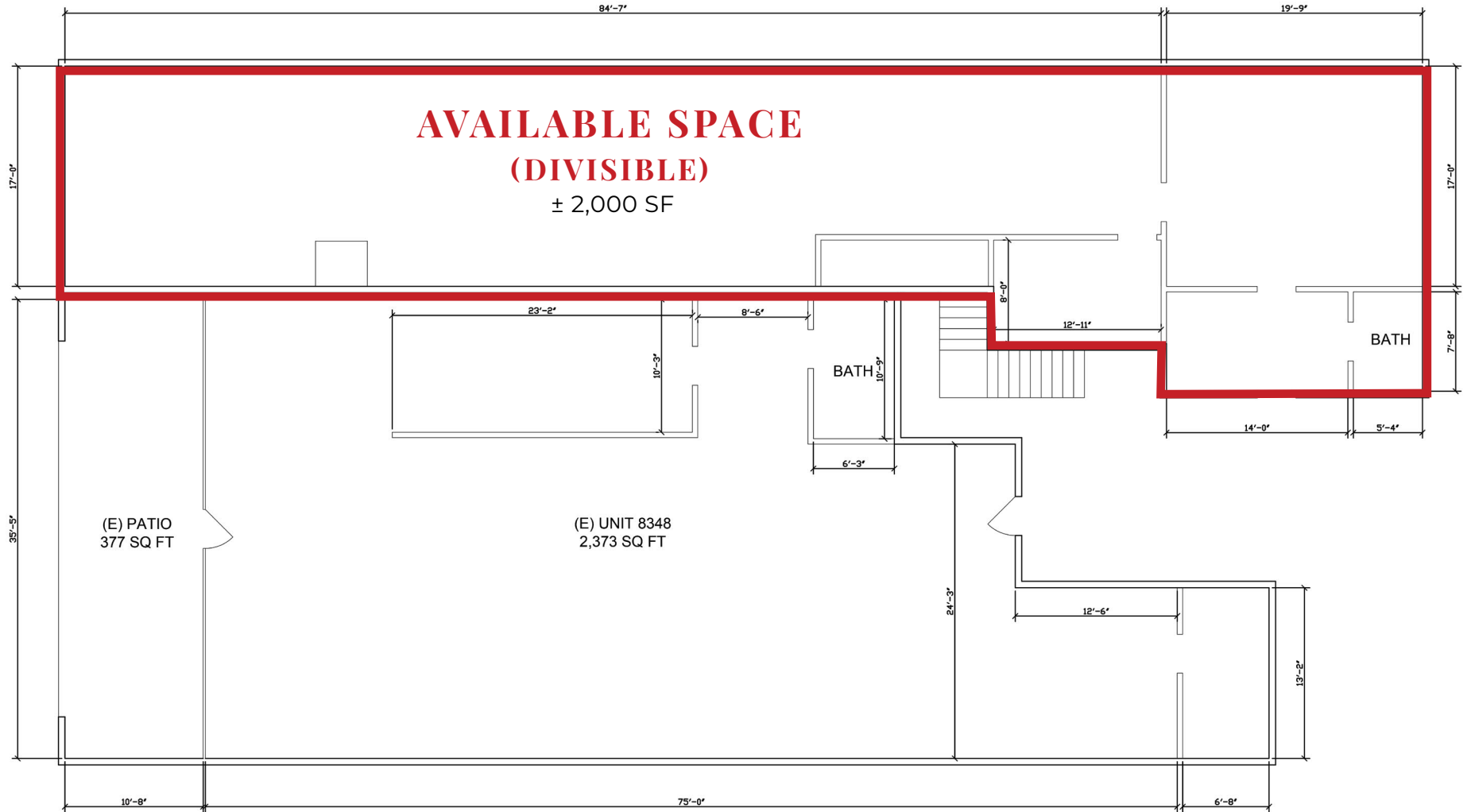
## PARKING

2 parking spaces in rear



Located in the heart of Beverly Grove, this ground floor space is perfect for retail or food use.

# Floor Plan



# Property Photos



# Property Photos



# Property Photos



# Area Overview

The property is located in the heart of Beverly Grove and sits between Kings Road and Flores Street. The area is active with daytime foot traffic from shoppers and office tenants in the neighborhood. Tenants in the area include West Elm, Cosmo Prof, Beverly Hills Juice, Kings Road Cafe, backyard bowls, and many more.



# | *Contact*

---

---

## **STEVE RAVAN**

**TELEPHONE:** (323) 782-1262

**EMAIL:** [STEVEHAVAN@SOUTHPARKGROUP.COM](mailto:STEVEHAVAN@SOUTHPARKGROUP.COM)

---

## **MANE AJARYAN**

**TELEPHONE:** (818) 523-4997

**EMAIL:** [MANE@SOUTHPARKGROUP.COM](mailto:MANE@SOUTHPARKGROUP.COM)