

For Sale

# Downtown Menlo Park Restaurant & Bar

1075-1077 El Camino Real

Menlo Park, California

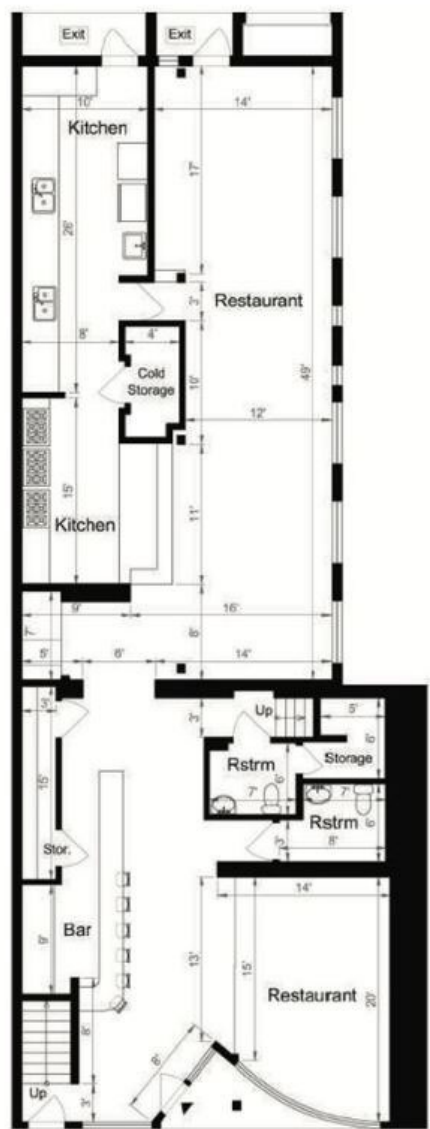




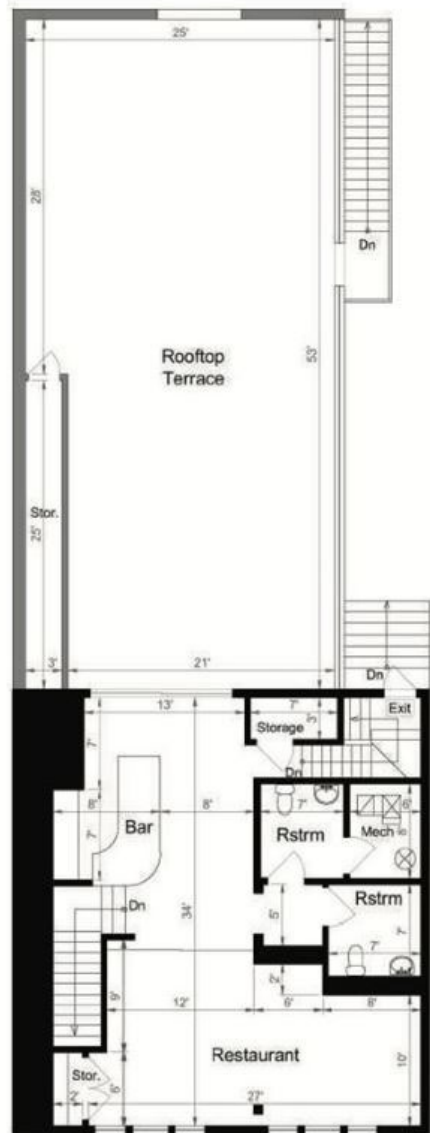
## Property Highlights:

- High Visibility/High Traffic Location/High Growth Area/Near Caltrain
- Zoning: *“Retail/Mixed Use, Downtown/Station Area”*
- Size:
  - ±3,640 Indoor Sq Ft Dining & Bar on 2-stories
  - ±1,225 Upper Floor Outside Dining Patio (±80-seat capacity)
- Directly between New Spring line Retail Plaza and The Middle Plaza mixed-use developments
- Short Walk from 502 New High-Density Residential Units and 70 new hotel rooms
- Fee Simple Ownership (APN: 071-287-030)
- Price: \$4,495,000.00

# Floor Plan



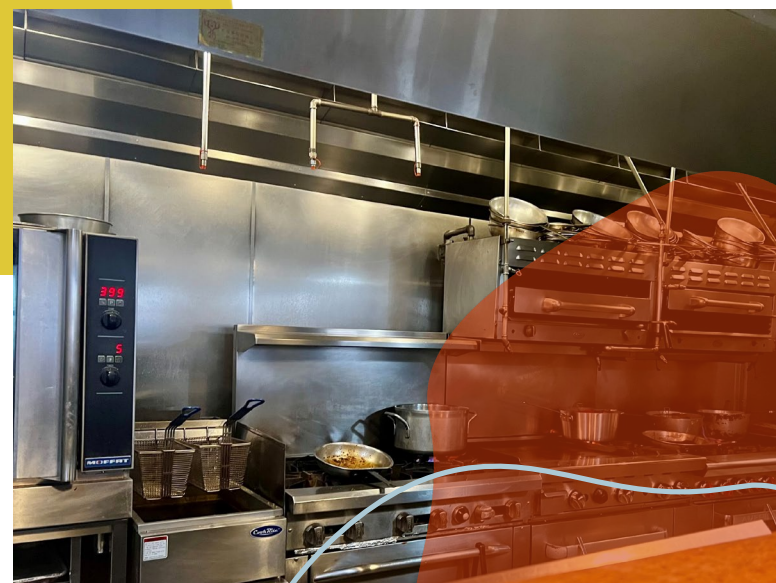
FIRST FLOOR  
2,465 SQ FT



SECOND FLOOR  
1,175 SQ FT

Estimated Total Square Footage: 3,640 SQ FT  
*Calculated from outside face of exterior walls.*







# 1077 El Camino Real

Menlo Park, California



## Contacts:

### Miles DeLong

Associate

+1 650 804 4143

[Miles.delong@cbre.com](mailto:Miles.delong@cbre.com)

Lic. 02049035

### Nino Gaetano

Broker Associate

+1 650 207 1986

[nino.g@theagencyre.com](mailto:nino.g@theagencyre.com)

Lic. 01236316

# CBRE



© 2025 CBRE, Inc. All rights reserved. This information has been obtained from sources believed reliable but has not been verified for accuracy or completeness. CBRE, Inc. makes no guarantee, representation or warranty and accepts no responsibility or liability as to the accuracy, completeness, or reliability of the information contained herein. You should conduct a careful, independent investigation of the property and verify all information. Any reliance on this information is solely at your own risk. CBRE and the CBRE logo are service marks of CBRE, Inc. All other marks displayed on this document are the property of their respective owners, and the use of such marks does not imply any affiliation with or endorsement of CBRE. Photos herein are the property of their respective owners. Use of these images without the express written consent of the owner is prohibited.