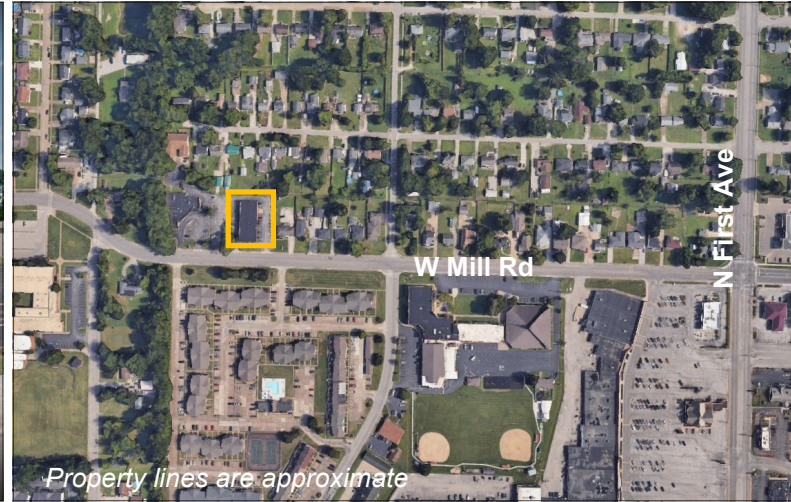




**F.C. Tucker
Commercial**

AVAILABLE

**1133 W Mill Road
EVANSVILLE, IN 47710**



FOR LEASE

- **Available SF:** Second Floor
- **Utilities:** Included
- **Lot Size:** 0.97 Acres +/-
- **Year Built:** 1974
- **Zoning:** CO-2, R-1
- **# of Parking Spaces:** Ample
- **Current Use:** Multi-Tenant
- **Showing:** Contact Listing Broker

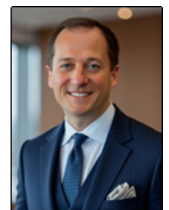
Location	Available SF	Lease Price
Suite 209	280 SF	\$300/Month
Suite 208	424 SF	\$425/Month
Suite 200	500 SF	\$500/Month

Owner holds an Indiana Real Estate License.

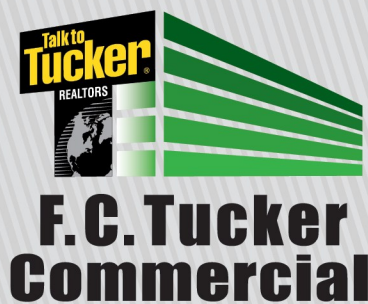
For more information, contact:

Aaron Kendall, CCIM

Direct: 812-480-8100 • AaronKendall@FCTuckerCommercial.com



The information contained herein was obtained from sources we consider reliable. We cannot be responsible, however, for errors, omissions, prior sale, and withdrawal from the market or change in price.



AVAILABLE

1133 W Mill Road
EVANSVILLE, IN 47710

FOR LEASE

- **Features: Very nice, well maintained office building. Convenient location.**

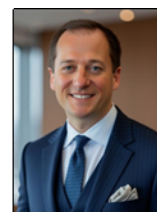


Owner holds an Indiana Real Estate License.

For more information, contact:

Aaron Kendall, CCIM

Direct: 812-480-8100 • AaronKendall@FCTuckerCommercial.com



812-473-6677 • FCTuckerCommercial.com

7820 EAGLE CREST BLVD., SUITE 200 • EVANSVILLE, IN 47715

