

# New Lobby!



## Medical Space for Lease

240 LA CASA VIA  
WALNUT CREEK, CA 94598

### Available

Suite 100 – +/- 4,050 RSF (space can demised)  
Suite 100- A – 2,550 RSF  
Suite 100- B – 1,500 RSF

### Property Highlights

- Abundant parking: 5.5/1,000 parking ratio
- Walking distance from John Muir Medical Center and Walnut Creek Behring Pavilion (Cancer Center).

*For information, please contact:*

#### Justin Grilli

Senior Managing Director  
t 925-997-1353  
justin.grilli@nmrk.com  
CA RE License #01410373

#### Nelson Roberts

Associate  
t 925-210-8741  
nelson.roberts@nmrk.com  
CA RE License #02109703

# NEWMARK

The information contained herein has been obtained from sources deemed reliable but has not been verified and no guarantee, warranty or representation, either express or implied, is made with respect to such information. Terms of sale or lease and availability are subject to change or withdrawal without notice.

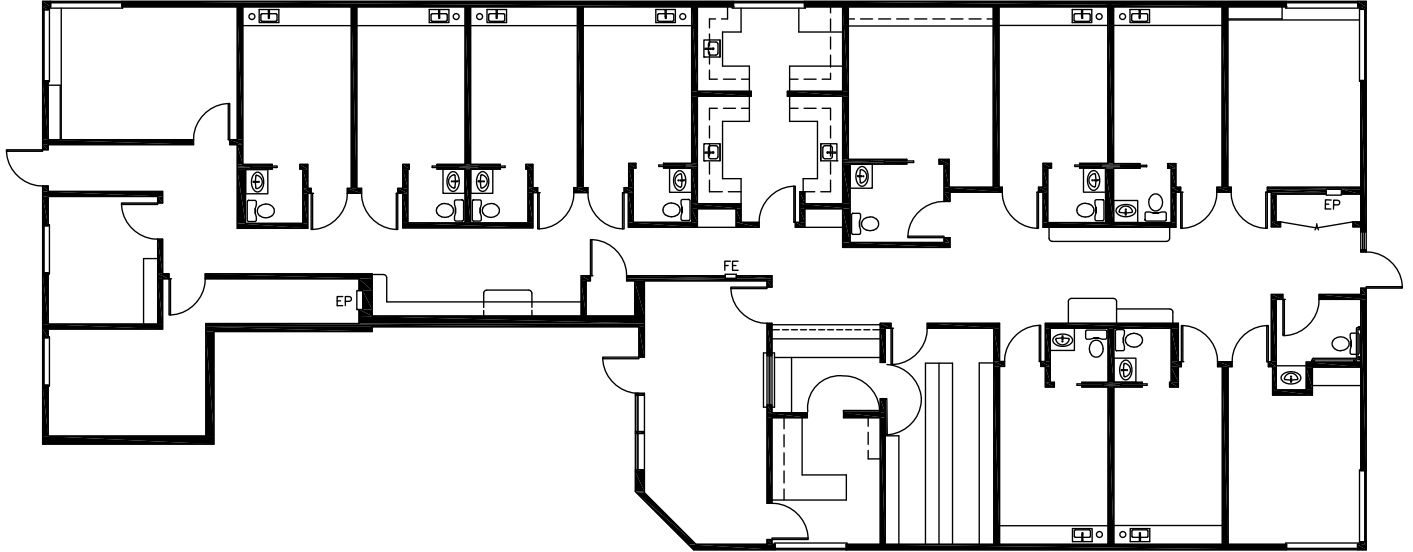
**AERIAL - 240 LA CASA VIA, WALNUT CREEK, CA 94598**



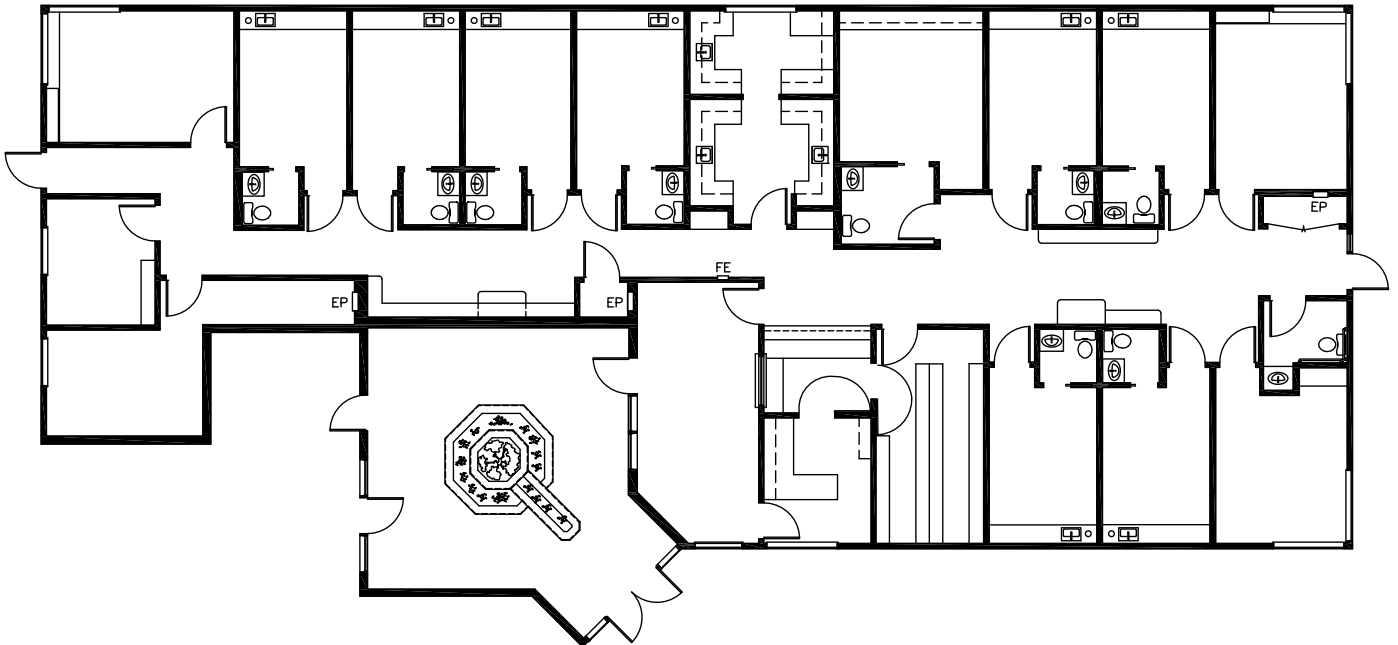
**NEW LOBBY**



Suite 100 – +/- 4,050 RSF

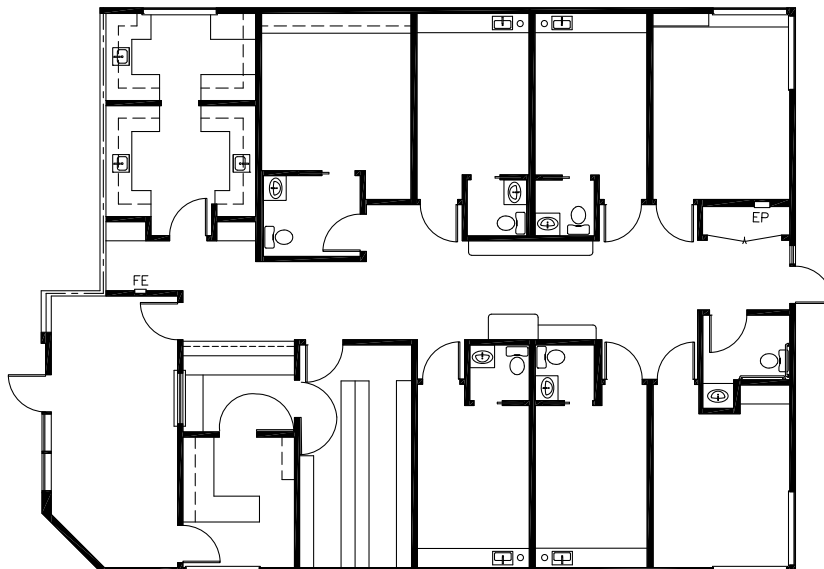


Suite 100 with Lobby



Floor Plans

**Suite 100-A – 2,550 RSF**



**Suite 100-B – 1,500 RSF**

