

TREE LIST			
TREE	TREE	TREE	TREE
101 22" CEDAR ELM (DEAD)	136 8" CEDAR ELM	171 9" CEDAR ELM (DEAD)	206 11" CEDAR ELM
102 19" LIVE OAK	*137 11" CEDAR ELM	172 12" CEDAR ELM	207 11" CEDAR ELM
M*103 19" 17" LIVE OAK	R 138 9" HACKBERRY	173 8" CEDAR ELM	208 17" CEDAR ELM
*104 21" CEDAR ELM (DEAD)	R 139 8" HACKBERRY	174 8" CEDAR ELM	209 18" PECAN
*105 19" LIVE OAK	140 10" LIVE OAK	175 10" CEDAR ELM (DEAD)	210 10" CEDAR ELM
*106 23" CEDAR ELM (DEAD)	*141 10" CEDAR ELM	176 10" CEDAR ELM	211 8" CEDAR ELM
H 107 30" LIVE OAK	*142 10" CEDAR ELM	177 10" CEDAR ELM (DEAD)	212 8" CEDAR ELM
H 108 40" LIVE OAK	143 11" CEDAR ELM	178 11" CEDAR ELM (DEAD)	213 8" CHINA BERRY (DEAD)
H 109 29" LIVE OAK	144 11" CEDAR ELM	179 17" CEDAR ELM	214 12" CHINA BERRY (DEAD)
H*110 30" LIVE OAK	R 145 11" CEDAR ELM	180 11" CEDAR ELM (DEAD)	215 10" PECAN
H*111 25" LIVE OAK	R 146 9" HACKBERRY	181 11" CEDAR ELM	216 12" PECAN
H 112 19" CEDAR ELM (DEAD)	147 8" CEDAR ELM	182 13" CEDAR ELM	217 9" CEDAR ELM
H 113 29" CEDAR ELM	148 9" CEDAR ELM	183 18" CEDAR ELM	218 9" CEDAR ELM
H 114 24" CEDAR ELM (DEAD)	R 149 12" HACKBERRY	184 8" CEDAR ELM	219 10" CEDAR ELM
H*115 28" CEDAR ELM	R 150 10" HACKBERRY	185 21" HACKBERRY	220 10" PECAN
H 116 20" CEDAR ELM	151 8" CEDAR ELM	H 186 24" POST OAK	221 9" MULBERRY
H 117 19" CEDAR ELM	152 8" CEDAR ELM	187 14" CEDAR ELM	222 9" CHINA BERRY
M 118 25" 23" POST OAK	153 8" CEDAR ELM	188 13" POST OAK	*223 11" CEDAR ELM
H 119 24" POST OAK	*154 14" CEDAR ELM	189 19" POST OAK	224 11" HACKBERRY (DEAD)
*120 19" POST OAK	155 12" CEDAR ELM	190 13" POST OAK	225 14" PECAN
*121 22" POST OAK	*156 10" CEDAR ELM	191 9" PECAN	226 10" PECAN
H 122 25" POST OAK	R 157 9" CEDAR ELM	192 10" CEDAR ELM	227 8" PECAN
H 123 24" POST OAK	R 158 9" CEDAR ELM	193 10" CEDAR ELM	*228 10" CEDAR ELM
M 124 22" 20" POST OAK	R 159 20" HACKBERRY	194 8" CEDAR ELM	229 19" PECAN
125 19" POST OAK	R 160 14" CHINA BERRY	195 8" CEDAR ELM	230 10" HACKBERRY
H 126 27" POST OAK	M*161 27" POST OAK	196 12" CEDAR ELM	231 10" HACKBERRY (DEAD)
127 19" CEDAR ELM	R 162 8" HACKBERRY	H 197 24" CEDAR ELM	232 30" WILLOW (DEAD)
128 16" 13" SPANISH OAK	R 163 25" CHINA BERRY	198 14" LIVE OAK	233 22" WILLOW (DEAD)
129 15" SPANISH OAK	R 164 9" HACKBERRY	199 16" CEDAR ELM	234 9" HACKBERRY
M 130 17" 15" SPANISH OAK	H 165 18" CHINA BERRY	H 200 33" CEDAR ELM	R 235 16" HACKBERRY
H 131 25" SPANISH OAK (DEAD)	R 166 20" HACKBERRY	H 201 25" CEDAR ELM	R 236 12" CEDAR ELM
H 132 26" CEDAR ELM	167 11" SPANISH OAK	H 202 34" CEDAR ELM (DEAD)	R 237 13" CEDAR ELM
R 133 8" HACKBERRY	168 9" CEDAR ELM	H 203 21" CEDAR ELM (DEAD)	R 238 18" LUQUISTROM
134 12" LIVE OAK	169 11" CEDAR ELM (DEAD)	204 10" CEDAR ELM	239 10" CEDAR ELM
135 12" LIVE OAK	170 10" CEDAR ELM (DEAD)	205 9" CEDAR ELM	H 240 17", 11", 9" PECAN
			H 241 28" POST OAK (COA# 267)

\* DENOTES TREES TO BE REMOVED  
 R - DENOTES R.O.W. TREES  
 - TREE SURVEY CONDUCTED PER CUATRO CONSULTANTS ON JANUARY 21, 2014

MITIGATION RATES		
APPENDIX "F"	19" + DIAMETER	REPLACE AT 100%
APPENDIX "F"	8"-18.9" + DIAMETER	REPLACE AT 50%
ALL OTHER TREES	19" + DIAMETER	REPLACE AT 50%
ALL OTHER TREES	8"-18" + DIAMETER	REPLACE AT 25%

**SUMMARY - TREE INCHES**

TOTAL TREE INCHES SURVEYED - 2180

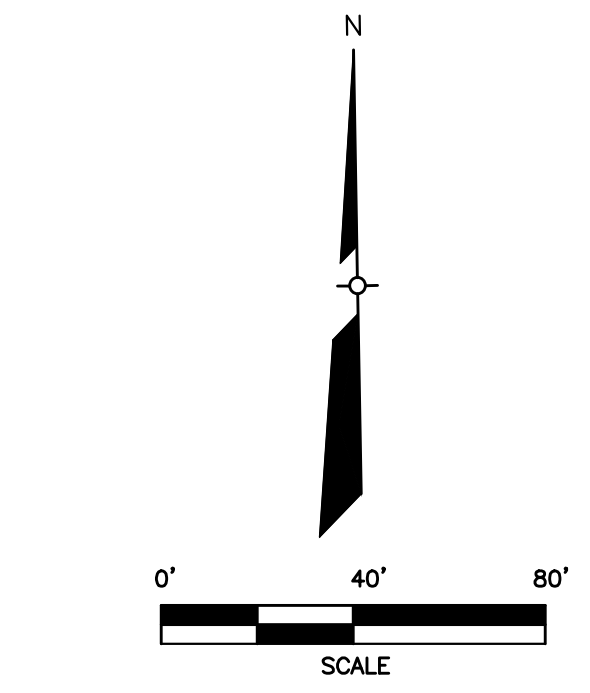
TOTAL APPENDIX "F" 19"+ TREE INCHES REMOVED= 214

TOTAL TREE INCHES REMOVED= 258.5

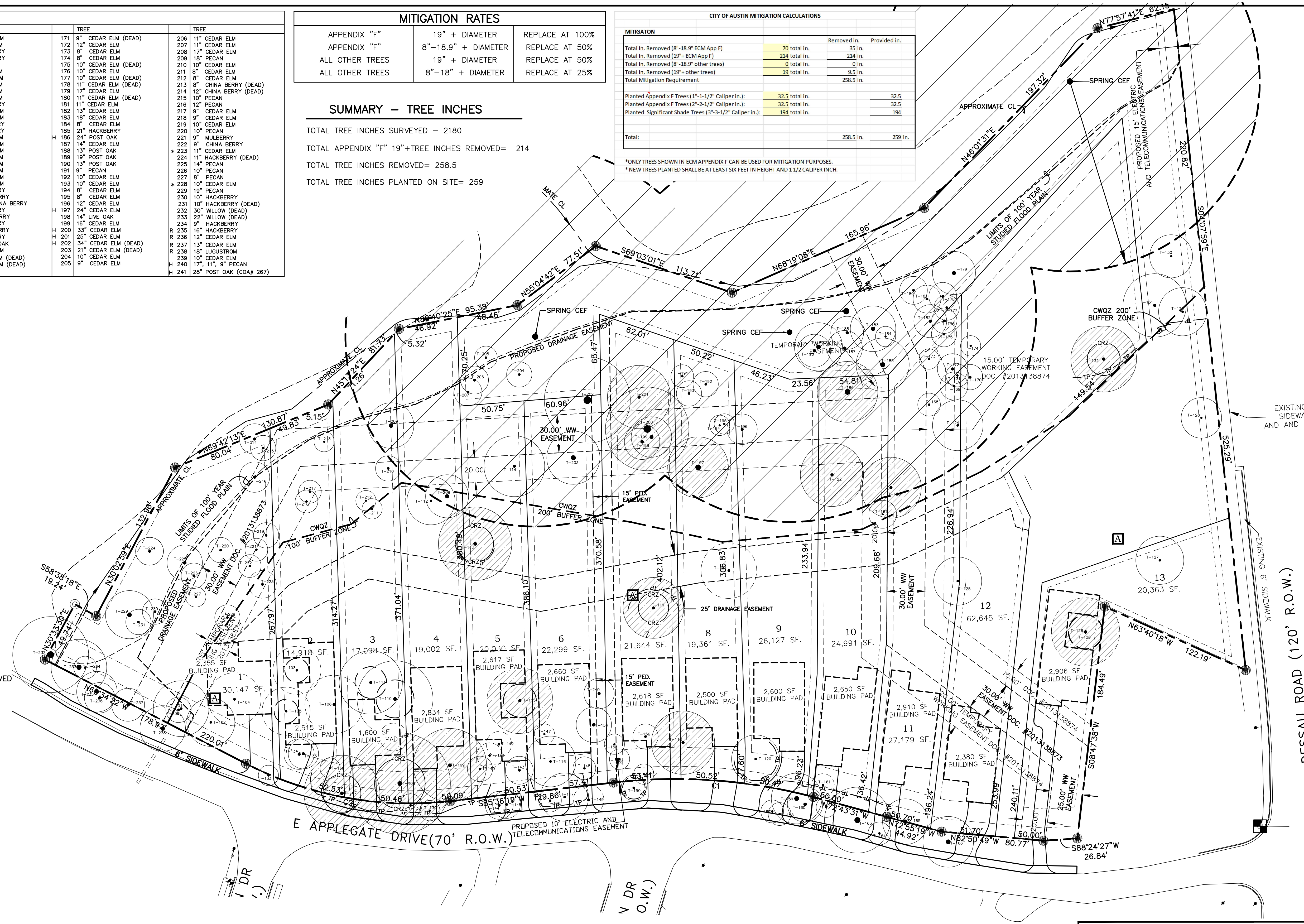
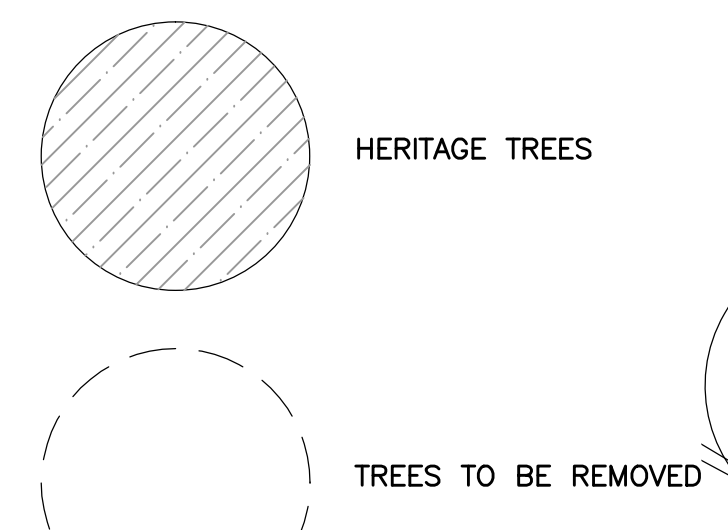
TOTAL TREE INCHES PLANTED ON SITE= 259

CITY OF AUSTIN MITIGATION CALCULATIONS			
MITIGATION	Removed in.	Provided in.	
Total In. Removed (8"-18.9" ECM App F)	70 total in.	35 in.	
Total In. Removed (19"+ ECM App F)	233 total in.	233 in.	
Total In. Removed (8"-18.9" other trees)	0 total in.	0 in.	
Total In. Removed (19"+ other trees)	19 total in.	9.5 in.	
Total Mitigation Requirement		258.5 in.	
Planted Appendix F Trees (1"-1-1/2" Caliper in.):	32.5 total in.	32.5	
Planted Appendix F Trees (2"-2-1/2" Caliper in.):	32.5 total in.	32.5	
Planted Significant Shade Trees (3"-3-1/2" Caliper in.):	194 total in.	194	
Total:		258.5 in.	259 in.

\* ONLY TREES SHOWN IN ECM APPENDIX F CAN BE USED FOR MITIGATION PURPOSES.  
 \* NEW TREES PLANTED SHALL BE AT LEAST SIX FEET IN HEIGHT AND 1 1/2" CALIPER INCH.



**LEGEND**



DATE:	BY:	DESCRIPTION:

**CUATRO** Consultants, L.P.  
 Registration No. F-5324  
 3601 Kille Creek, Suite B Phone: (512) 242-9060 Fax: (512) 242-9399  
 Kyle, Texas 78740 e-mail: cuatro@austintx.cuatro.com

**BUILDING PAD EXHIBIT**  
 SILVEREDGE CREEK SUBDIVISION  
 TRAVIS COUNTY, TEXAS

OWNER: SILVEREDGE CONSTRUCTION  
 106 FOX GLEN CIRCLE  
 IRVING, TEXAS 75062  
 (469) 556-0622

**SITE PLAN RELEASE** Sheet \_\_\_ of \_\_\_

FILE NUMBER: \_\_\_\_\_ EXPIRATION DATE: \_\_\_\_\_  
 CASE MANAGER: \_\_\_\_\_ APPLICATION DATE: \_\_\_\_\_  
 APPROVED ADMINISTRATIVELY ON: \_\_\_\_\_  
 APPROVED BY PLANNING COMMISSION: \_\_\_\_\_  
 APPROVED BY CITY COUNCIL ON: \_\_\_\_\_  
 under Section 12 of Chapter 25-5 of the Austin City Code.

Director, Department of Planning and Development

DATE OF RELEASE: \_\_\_\_\_ ZONING: \_\_\_\_\_  
 Rev 1 \_\_\_\_\_ Correction 1: \_\_\_\_\_  
 Rev 2 \_\_\_\_\_ Correction 2: \_\_\_\_\_  
 Rev 3 \_\_\_\_\_ Correction 3: \_\_\_\_\_

DATE:	BY:	DESCRIPTION:
MAY, 2015		
JOB # 13-152		
DRAWING'S NAME: SILVEREDGE-PRELIM_TREE		
DESIGN: _____ CHECKED: MC		
DRAWN: LS/AS APPROVED: HE, Jr.		
SHEET: 1 OF 1		