

 **JUSTISONLANDINGRETAIL**  
RIVERFRONT WILMINGTON



**MULTIPLE SPACES** FOR LEASE

# PROPERTY MANAGEMENT

## Justison Landing Retail

Property Managed by **B P G** | 3 6 0

BPG | 360 is a **full-service real estate asset and property management company** that strives to exceed the expectations of every tenant and owner they serve. The company actively manages more than six million square feet of commercial properties in the Maryland to Philadelphia office corridor, which includes properties both in The Buccini/Pollin Group's portfolio as well as those controlled by third-party owners. BPG 360's commercial operations team effectively touches every aspect of property management. With a 25 year history of managing commercial, hotel, retail and residential properties, every member brings their own experience and ideas to the table to provide an exceptional business model. BPG 360 is all about providing best in class customer service to the owners we represent, the tenants we serve, the vendor partnerships we culture and the fellow associates we work with every day.

BPG | 360 boasts one of the east coast's deepest benches of professionals with a very broad talent base of real estate and mechanical backgrounds. Our core team experience includes master electricians and plumbers, crafted painters, HVAC engineers, and landscapers along with experienced property managers, tax and financial analysts, construction managers and law enforcement personnel. It brings together top executives with experiences from the nation's leading real estate companies. This team marries their institutional backgrounds with a very entrepreneurial and pro-active tenant-focused platform.

The team maximizes the value of its assets with a hands-on, progressive management approach, enhancing financial performance through increased operating efficiency, asset repositioning, and rehabilitation strategies. The BPG 360 team carefully designs custom strategic plans to meet the challenges and opportunities faced by each specific property while optimizing value and performance based on the owner's specific goals.

# PROPERTY FACT SHEET

## Justison Landing Retail

### General Site Information

**Description:**

- Nestled amongst the Wilmington Riverfront neighborhood, with over 1,200 residential condos, apartments, and town homes occupied by established professionals. The Residences at Harlan Flats is now open and offering resort-style apartments with amazing amenities
- Located off I-95 and Martin Luther King Blvd. with excellent access to Rt. 13 and I-495 and the City of Wilmington and some of its cultural amenities such as The Grand, The World Café Live at the Queen, Delaware Theater Company and more
- Adjacent to Penn Cinema Riverfront, a state-of-the-art, 14-screen plus IMAX theater with luxury seating and the latest technology. The theater experiences 700,000+ in traffic annually
- The Wilmington Riverfront is the home to many exciting retailers and office users, including AAA, Barclays, Penn Cinema Riverfront, The Delaware Children's Museum, The Wilmington Blue Rocks' Frawley Stadium, Chase Riverfront Center, Joe's Crab Shack, Iron Hill Brewery, Big Fish Grille, Cross Fit Riverfront, Veritas Wine & Sip Bar, Currie Hair Skin & Nails, Harry's Seafood, Timothy's Restaurant, Stratosphere Trampoline Park, ShopRite, and many others
- Highly visible space ideal for higher-end community uses

**Address:**

Justison St, Wilmington, DE 19801

**Year Built:**

2008

**Property Type:**

Mixed-Use

**Building Specifications:**

- 16'-0" finished ceiling height
- Flexible space plans are available

**Anchor Tenants:**

Currie Hair, Skin & Nails • Veritas Wine & Spirits • Starbucks • Riverfront Bakery • Riverfront Pets

**Public Transportation:**

Philadelphia International Airport – 20.4 miles • Wilmington Amtrak Station – .25 Miles

# WILMINGTON RIVERFRONT AMENITIES

Justison Landing Retail



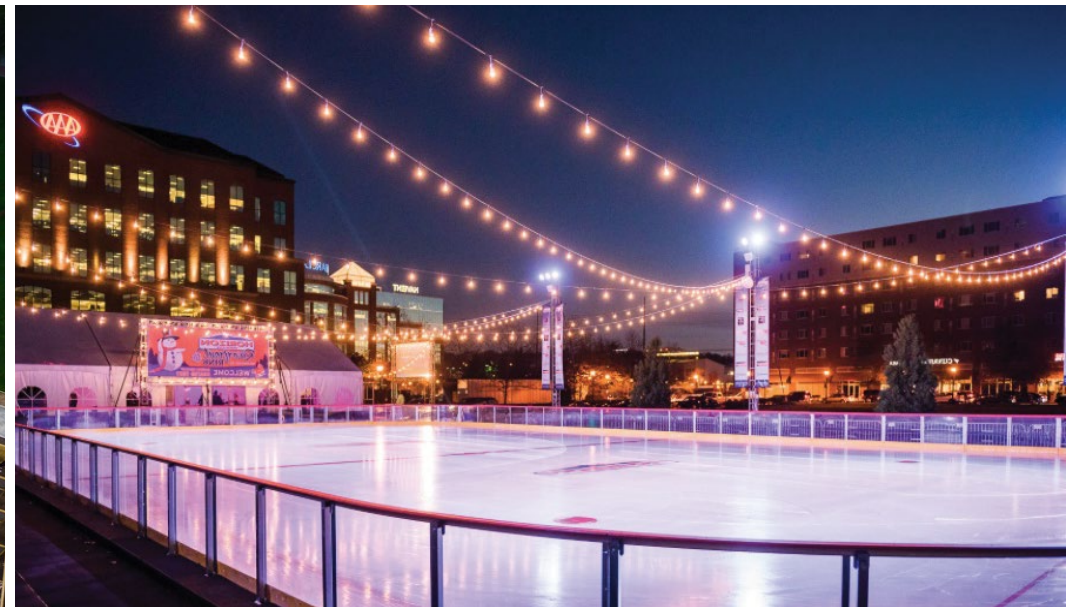
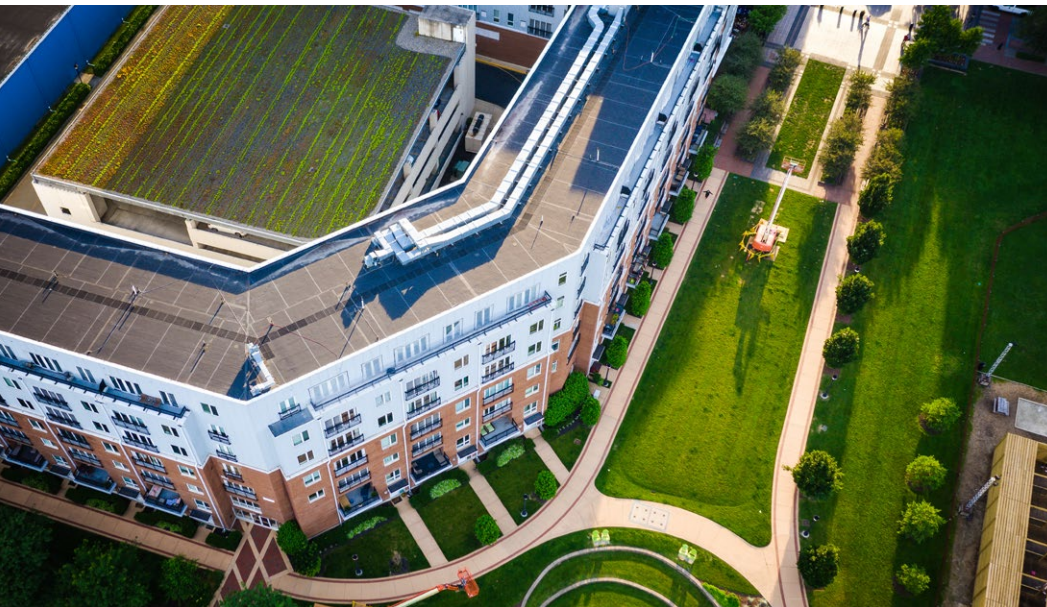
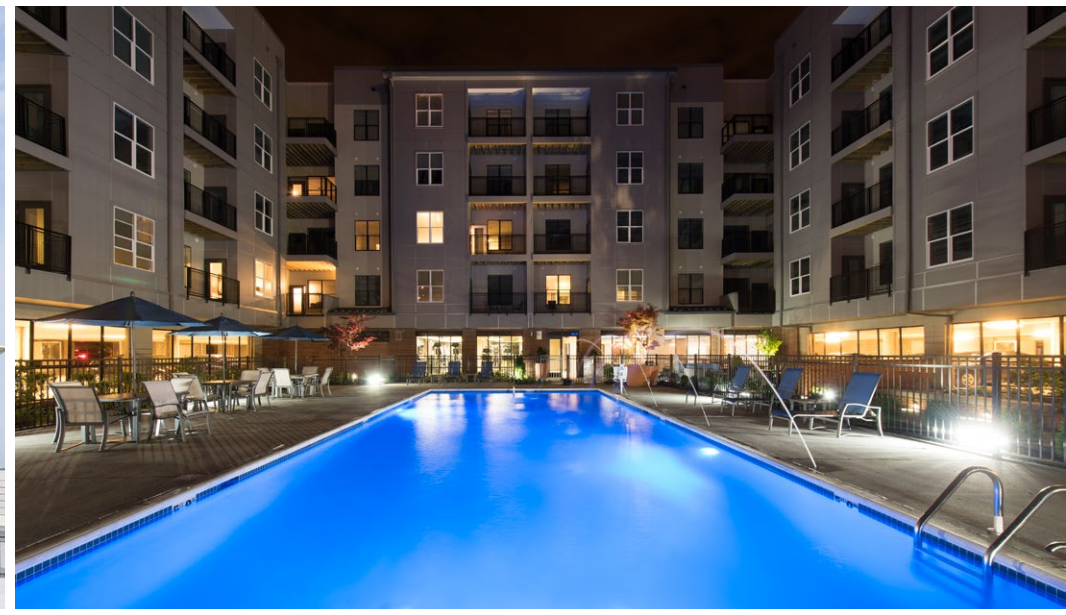
# WILMINGTON RIVERFRONT AMENITIES

Justison Landing Retail



# WILMINGTON RIVERFRONT AMENITIES

Justison Landing Retail



# PROPERTY OVERVIEW

Justison Landing Retail



# RIVERFRONT AMENITIES MAP

## Justison Landing Retail



### RETAIL

1. Bank's Seafood Kitchen & Raw Bar /Riverfront Market
2. Constitution Yards Beer Garden, Horizon Services Riverfront Rink
3. Riverfront Pets
4. The Riverfront Bakery
5. Currie Hair, Skin & Nails
6. Veritas Wine & Spirits
7. Starbucks on the Riverfront
8. Del Pez Mexican Gastropub, Goju Training Center
9. Christina Crossing Shopping Center & ShopRite
10. Riverfront Restaurants
11. Shipyard Shops

### ENTERTAINMENT AND SPORTS

12. Delaware Theatre Co.
13. Tubman-Garrett Riverfront Park
14. Opera Delaware Studios/City Theater Co.
15. Wilmington Youth Rowing Assn.
16. Wilmington Rowing Center
17. Docklands Riverfront
18. Hare Pavilion/Riverwalk

### 19. The Delaware Contemporary

20. Public Docks
21. Delaware Children's Museum, Riverwalk Mini Golf
22. Frawley Stadium, Delaware Sports Museum & Hall of Fame
23. Chase Center on the Riverfront
24. Dravo Plaza & Dock
25. Planet Fitness
26. Russell W. Peterson Urban Wildlife Refuge/ DuPont Env. Edu. Center
27. Penn Cinema Riverfront IMAX
28. CrossFit Riverfront
29. Altitude Trampoline Park
30. Chase Fieldhouse
31. Chase Fields
32. Kalmar Nyckel Shipyard/Fort Christina Park
33. Jack A Markell Bike Trail

### RESIDENTIAL

34. The Residences at Christina Landing Apartments, RiverTower Condos, and Christina Landing Townhomes
35. The Residences at Justison Landing Apartments
36. The Residences at Harlan Flats Apartments

### COMMERCIAL

37. The Star Building
38. Christina Crescent
39. Barclays
40. AAA
41. Delaware Humane Association

### HOTEL

42. Hyatt Place Wilmington Riverfront
43. Homewood Suites by Hilton Wilmington Downtown
44. The Westin Wilmington, River Rock Kitchen

### TRANSPORTATION

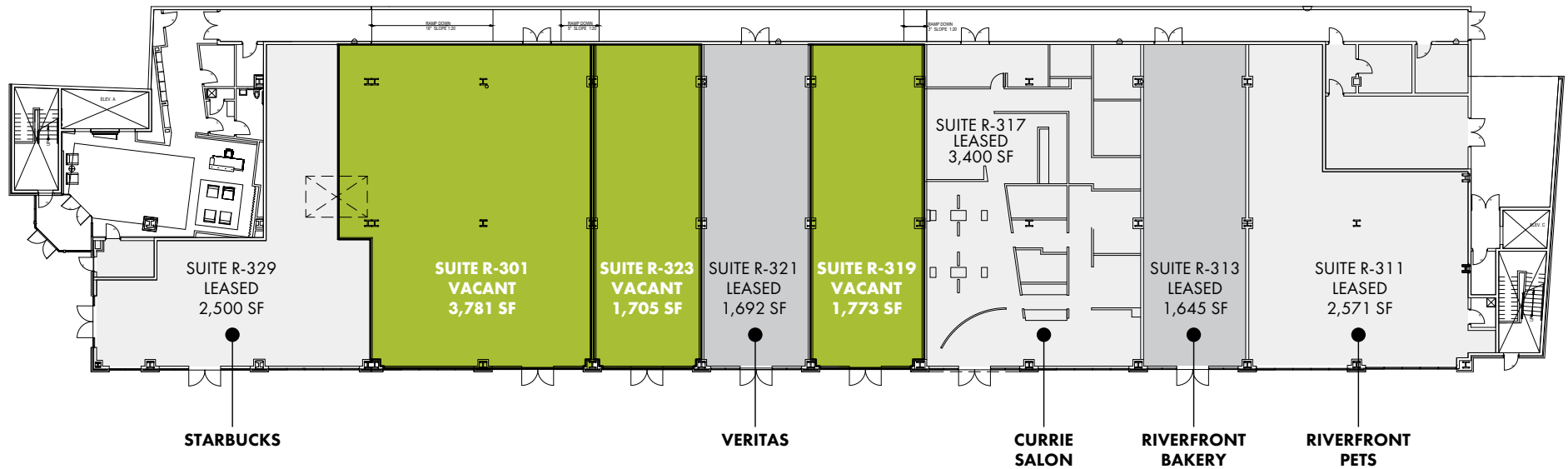
45. AMTRAK & SEPTA Train Station
46. Riverfront Commuter Lot
47. Christina River Bridge

 **JUSTISON LANDING RETAIL AVAILABLE**



# LEASING PLANS - 300 BLOCK

Justison Landing Retail

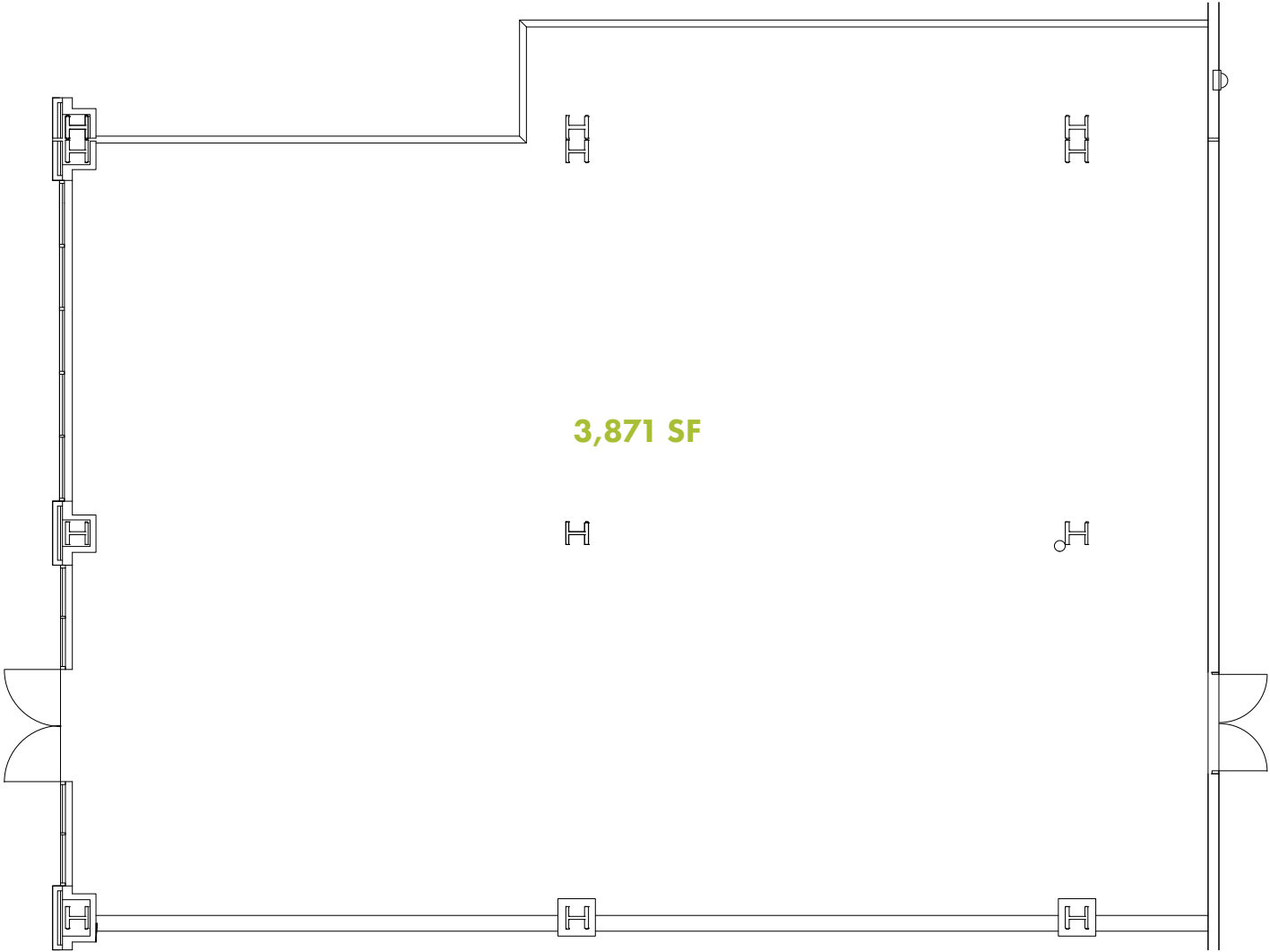


Suites R-301 and R-323 can be combined to form one 5,486 SF suite

## GROUND FLOOR PLAN

# SUITE R-301 - 3,781 SF

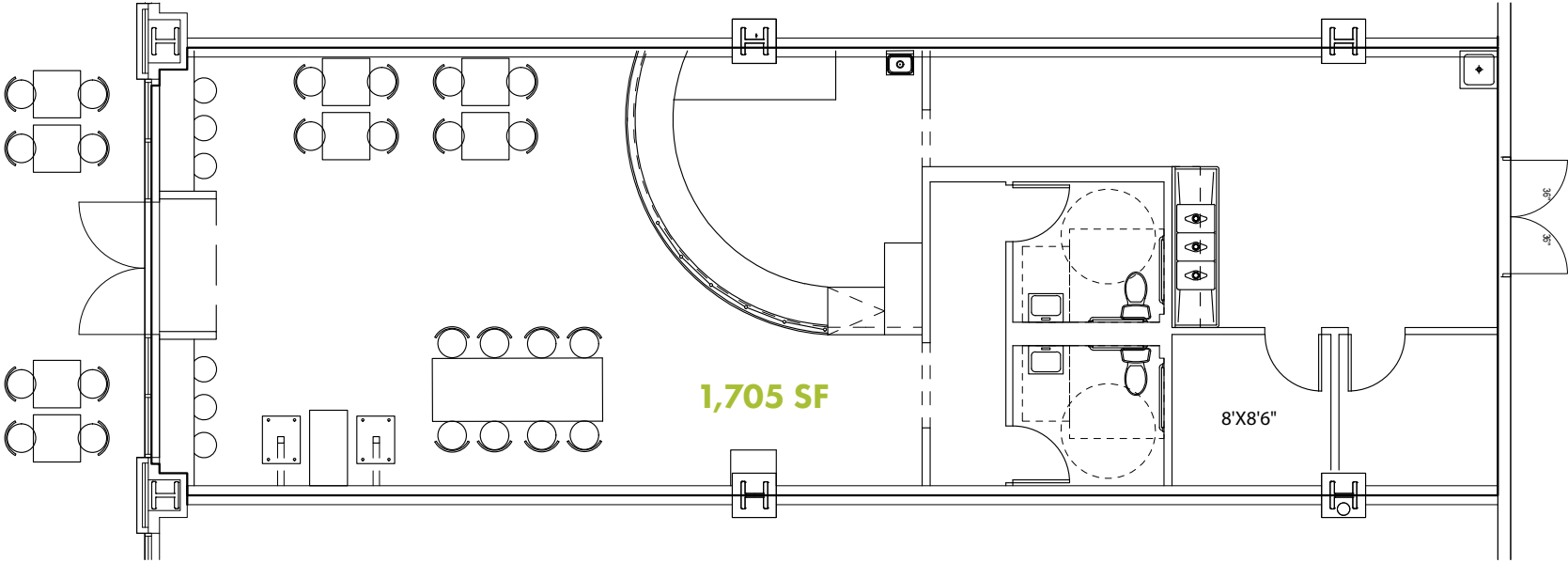
Justison Landing Retail - 300 Block



SUITE R-301 • 3,871 SF

# SUITE R-323 - 1,705 SF

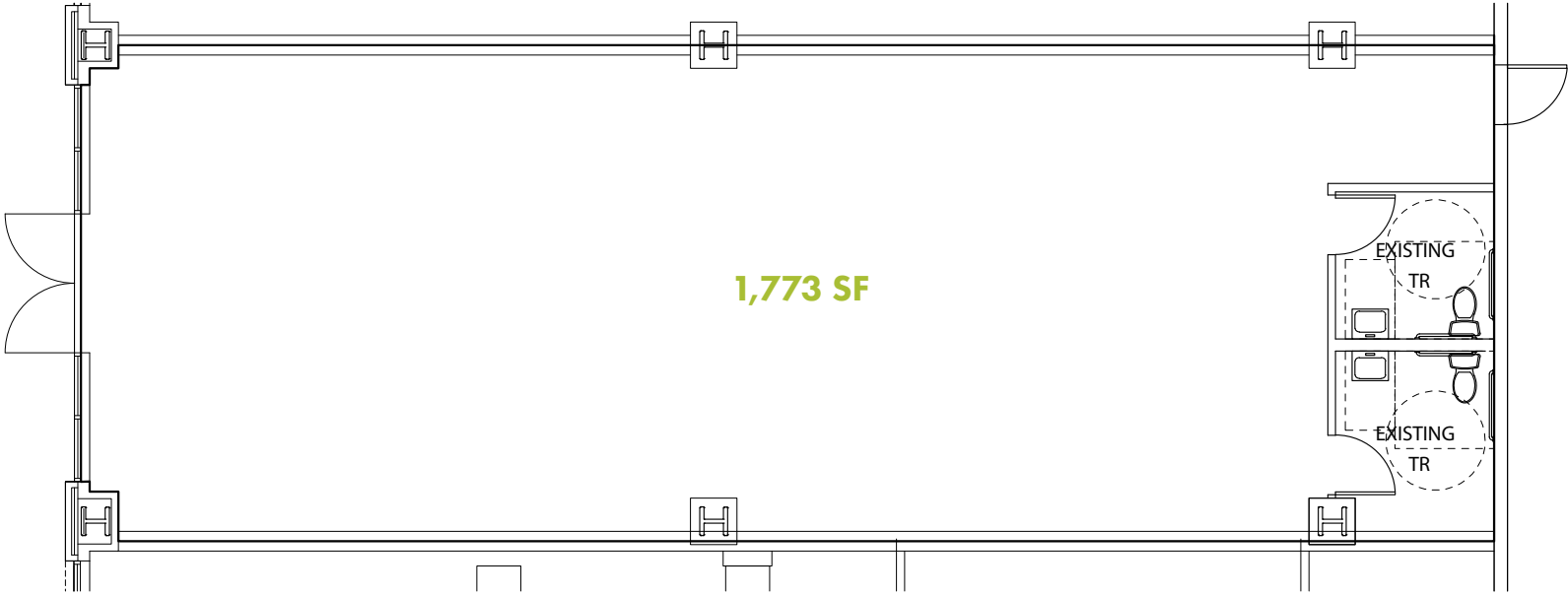
Justison Landing Retail - 300 Block



SUITE R-323 • 1,705 SF

# SUITE R-319 - 1,773 SF

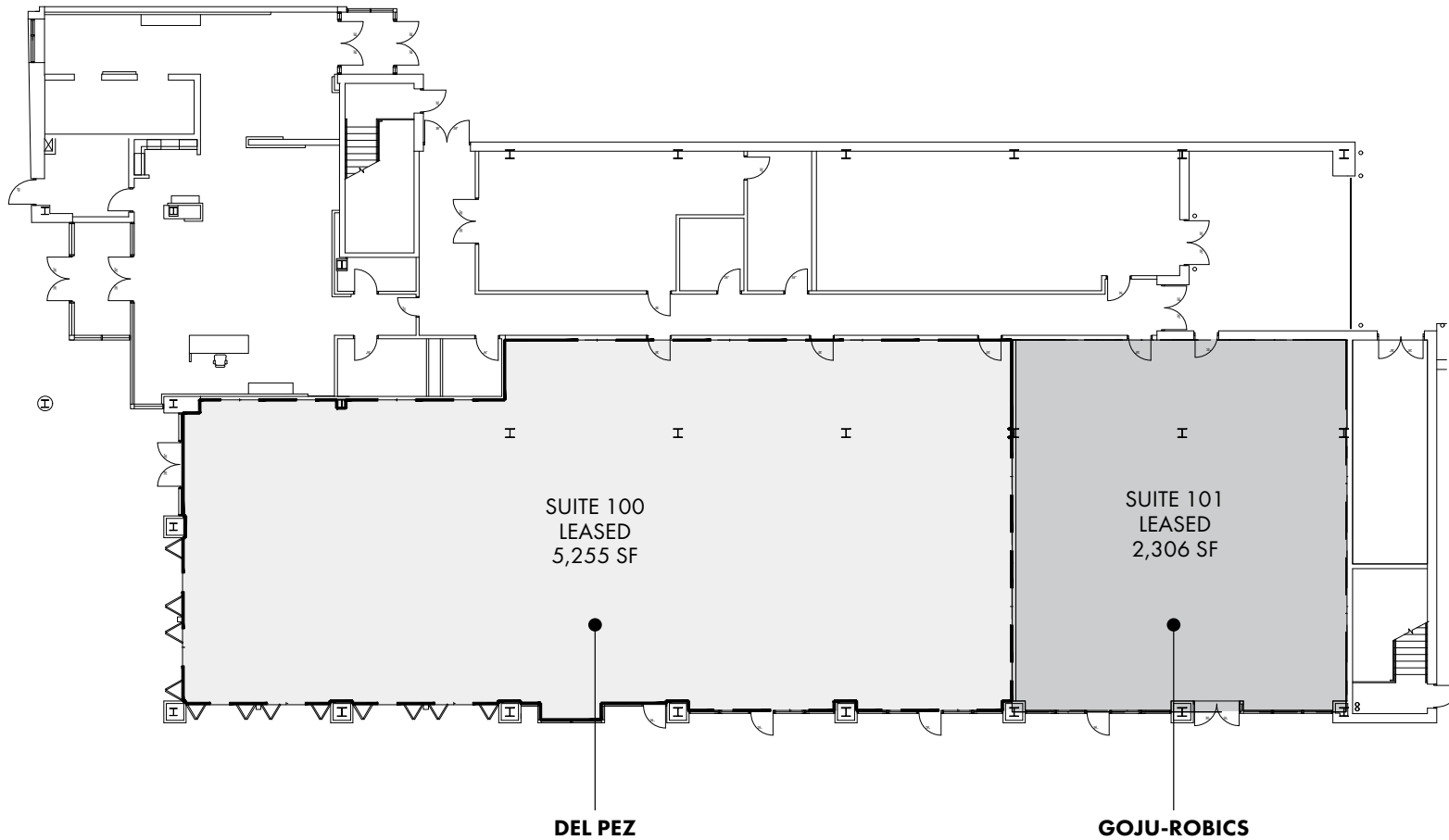
Justison Landing Retail - 300 Block



SUITE R-319 • 1,773 SF

# LEASING PLANS - 400 BLOCK

Justison Landing Retail



GROUND FLOOR PLAN

## **Kate Vaughan**

W 302.691.4066

C 610.413.9004

F 302.601.2099

E [kvaughan@virtusrea.com](mailto:kvaughan@virtusrea.com)