

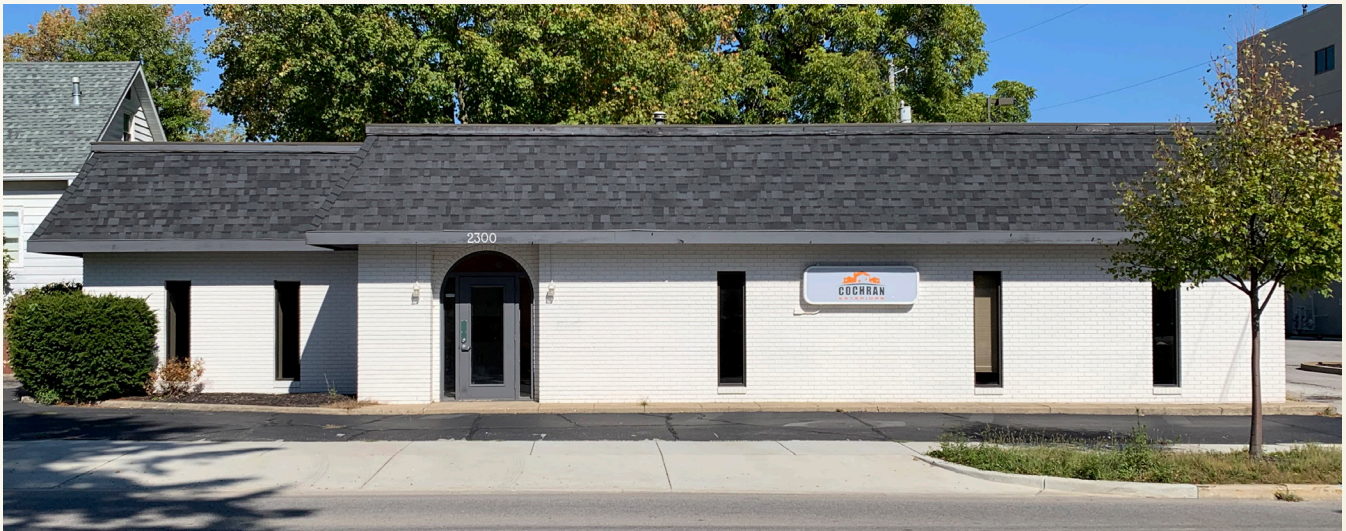
OFFICE SPACE FOR LEASE

2300 SOUTH STREET · LAFAYETTE

Call Randy Truitt
at 765-404-7584
Randy@TruVantRealty.com

TRUVANT
REALTY

HIGH TRAFFIC · GREAT EXPOSURE



OFFICE SPACE

- Located on Lafayette's main East/West throughfare
- Average Daily Traffic Count: 13,000 Vehicles
- Great Frontage and Exposure
- \$1,500 per month Gross Lease (Minimum 3 Year Lease)

BUILDING AMENITIES INCLUDE

- 1632 Square Feet
- Large Conference Room
- 2 Restrooms
- Waiting Area with Counter and Sink
- 5 Offices
- Storage Room
- Easy Access to Columbian and Murdock Parks
- Close to Several Medical Facilities
- Close to Many Dining Options

