

# INDUSTRIAL PROPERTY FOR LEASE

## 1333 Haines Street Jacksonville, FL 32206



### OFFERING SUMMARY

Available SF:	23,000± SF
Warehouse SF:	21,500± SF
Office SF:	1,500± SF
Zoning:	Industrial Heavy
Loading:	1 Loading Door
Ceiling Height:	21'±
Year Built:	1962
Lease Rate:	

### PROPERTY OVERVIEW

Located just off of MLK JR Parkway, close to downtown Jacksonville, the property offers easy access to I-95 & I-10.



**Mark Wainwright**

904.398.1044 / [mwainwright@pinestreetrps.com](mailto:mwainwright@pinestreetrps.com)

Pine Street/RPS / 904.398.1044 / 2650-2 Rosselle Street, Jacksonville, FL 32204 / [pinestreetrps.com](http://pinestreetrps.com)

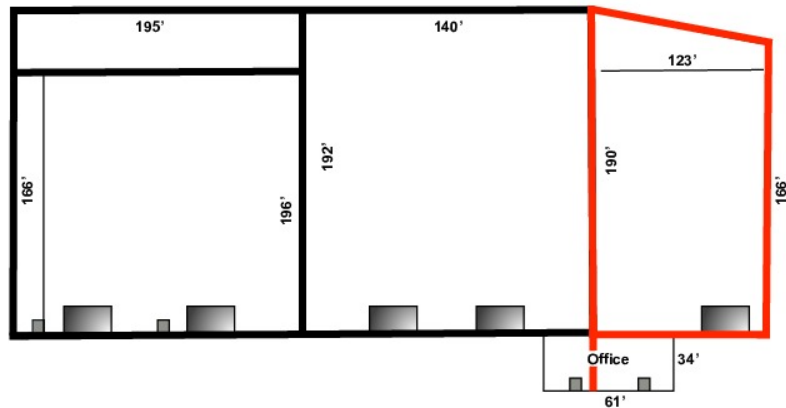
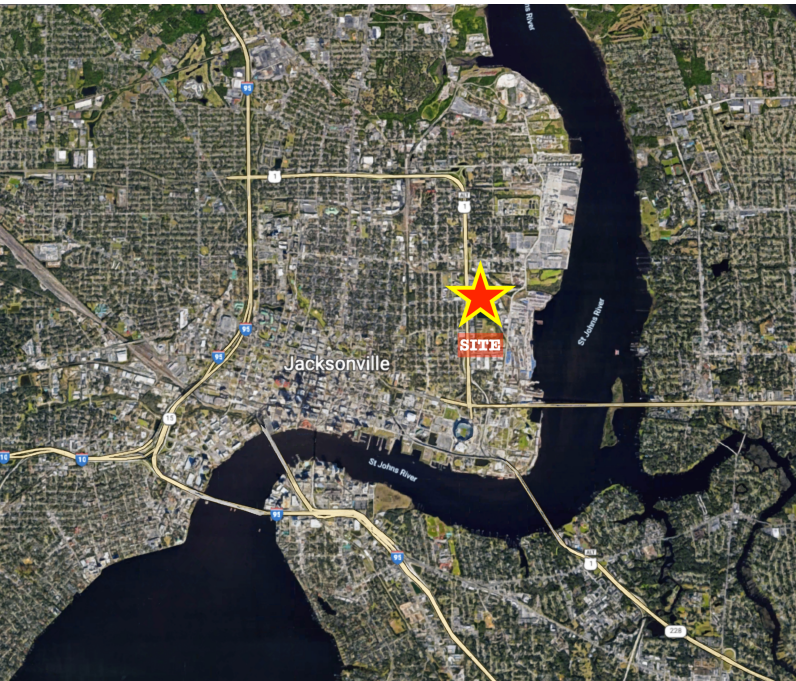
Information provided is deemed accurate, but subject to errors and/or omissions.



Pine Street / RPS

# INDUSTRIAL PROPERTY FOR LEASE

## 1333 Haines Street Jacksonville, FL 32206



**Mark Wainwright**

904.398.1044 / [mwainwright@pinestreetrps.com](mailto:mwainwright@pinestreetrps.com)

Pine Street/RPS / 904.398.1044 / 2650-2 Rosselle Street, Jacksonville, FL 32204 / [pinestreetrps.com](http://pinestreetrps.com)

Information provided is deemed accurate, but subject to errors and/or omissions.



Pine Street / RPS