

1545 W ANAHEIM & 1550 W 14th STREET | LONG BEACH, CA 90813

+/- 23,181 Square Feet | Gross Leasable Area



CONDITION OF PREMISES UPON DELIVERY | AVAILABLE ON OR AFTER JANUARY 1, 2026

HIGHLIGHTS

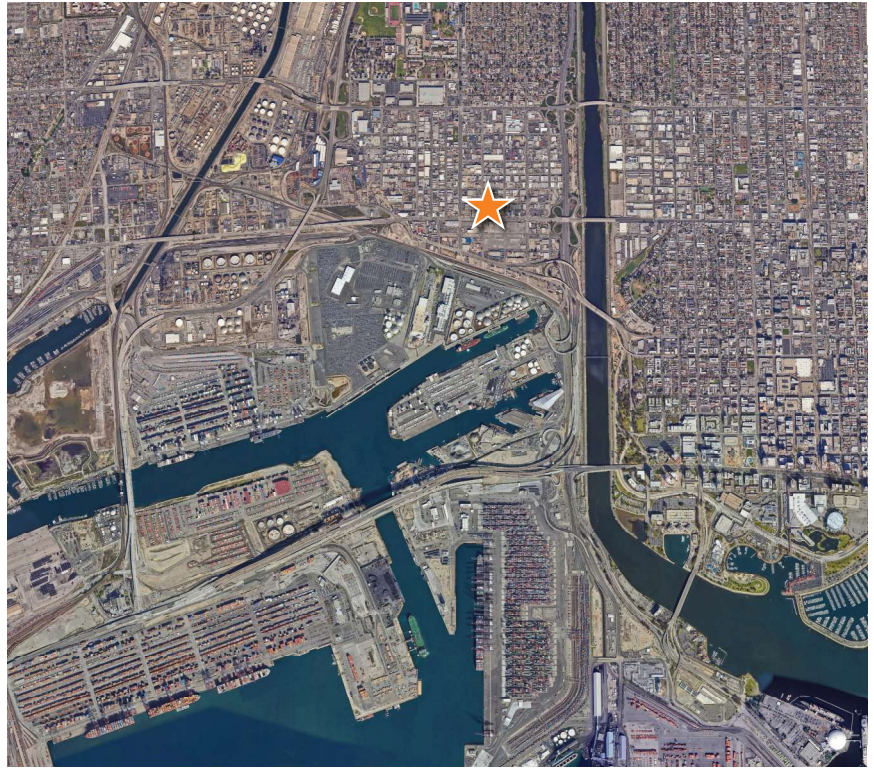
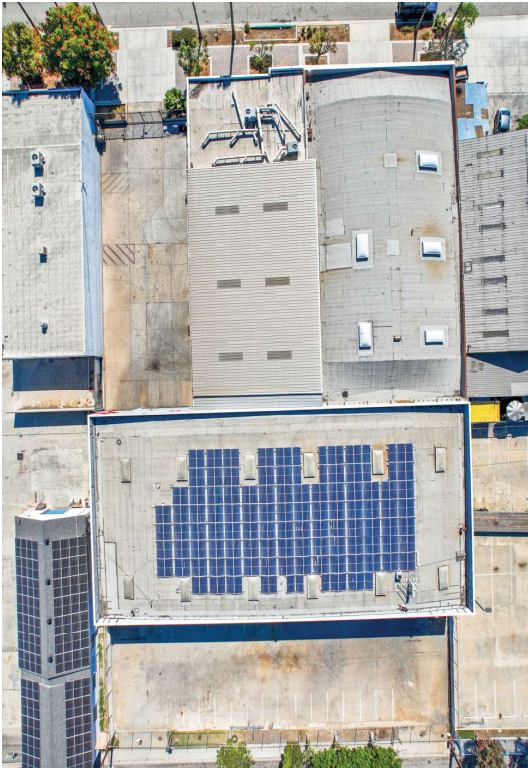
- Leasable Area: +/- 17,443 SQ. FT.
- Lot Size: +/- 43,073 sq. ft. (Includes +/- 4,339 sq. ft. Metal Covered Canopy Structure and +/- 14,926 sq. ft. Fenced Paved Yard Area)
- Loading: Four (4) Ground Level Loading Doors
- Warehouse Clearance: +/- 18'
- Year Built: 1948/1988
- Power: Heavy Industrial: To Be determined
- Location: Westside Industrial Area of Long Beach, CA near Ports of Long Beach and Los Angeles. Heavy Transportation Corridor.
- Access: Easy Access to Interstate (710) and other Interstate and Intrastate Transportation Corridors
- Zoning: LBIG (Industrial General)

PROPERTY OVERVIEW

Marcus and Millichap REIS is please to represent the leasing of 1545 W Anaheim St and 1550 W 14th Street, Long Beach, CA. 90813, located between Canal Avenue and Caspian Avenue in heart of the Westside Area of Long Beach, CA and on the Heavyweight Transportion Corridor.

The Westside Industrial Area of Long Beach is located a few miles west of Downtown Long Beach, which includes the Civic Center, the Long Beach Convention, Entertainment and Performing arts Centers, Rainbow Harbor, Shoreline Village, Aquarium of the Pacific, The Queen Mary and Carnival Cruise Port, as well as a burgeoning urban residential population.

Regional Aerial Map



ANAHEIM ST.

1555 ANAHEIM (PHILLIPS STEEL)
LONG BEACH CA, 90813
STEEL FABRICATION
7,403 S.F.

1545 ANAHEIM (PHILLIPS STEEL)
LONG BEACH CA, 90813
STEEL FABRICATION
6,181 S.F.

RESTROOMS

(E) OFFICES

PARKING LOT

1550 W 14TH ST. (PHILLIPS STEEL)
LONG BEACH CA, 90813
12,034 S.F.

1540 W 14TH ST. (PHILLIPS STEEL)
LONG BEACH CA, 90813

PARKING LOT

W 14TH ST.

NOT A PART

NOT A PART

NOT A PART