



For Sale

Individual Land Parcels in Independence, MO

Land Parcels for Sale / Independence, MO

1 2300 S Redwood Ave.

Acres	2.88 AC
Square Footage	125,453 SF
Pricing	\$125,331.00 (\$1.00/SF)

2 17600 E Medical Center Pkwy

Acres	4.44 AC
Square Footage	193,204 SF
Pricing	\$193,204.00 (\$1.00/SF)

3 17801 E Holke Rd.

Acres	7.37 AC
SF	320,166 SF
Pricing	\$240,770.25 (\$0.75/SF)

4 17701 E Holke Rd.

Acres	1.36 AC
SF	59,105 SF
Pricing	\$59,105.00 (\$1.00/SF)

5 17635 E Medical Center Pkwy

Acres	2.33 AC
SF	101,585 SF
Pricing	\$101,585.00 (\$1.00/SF)

6 17605 E Medical Center Pkwy

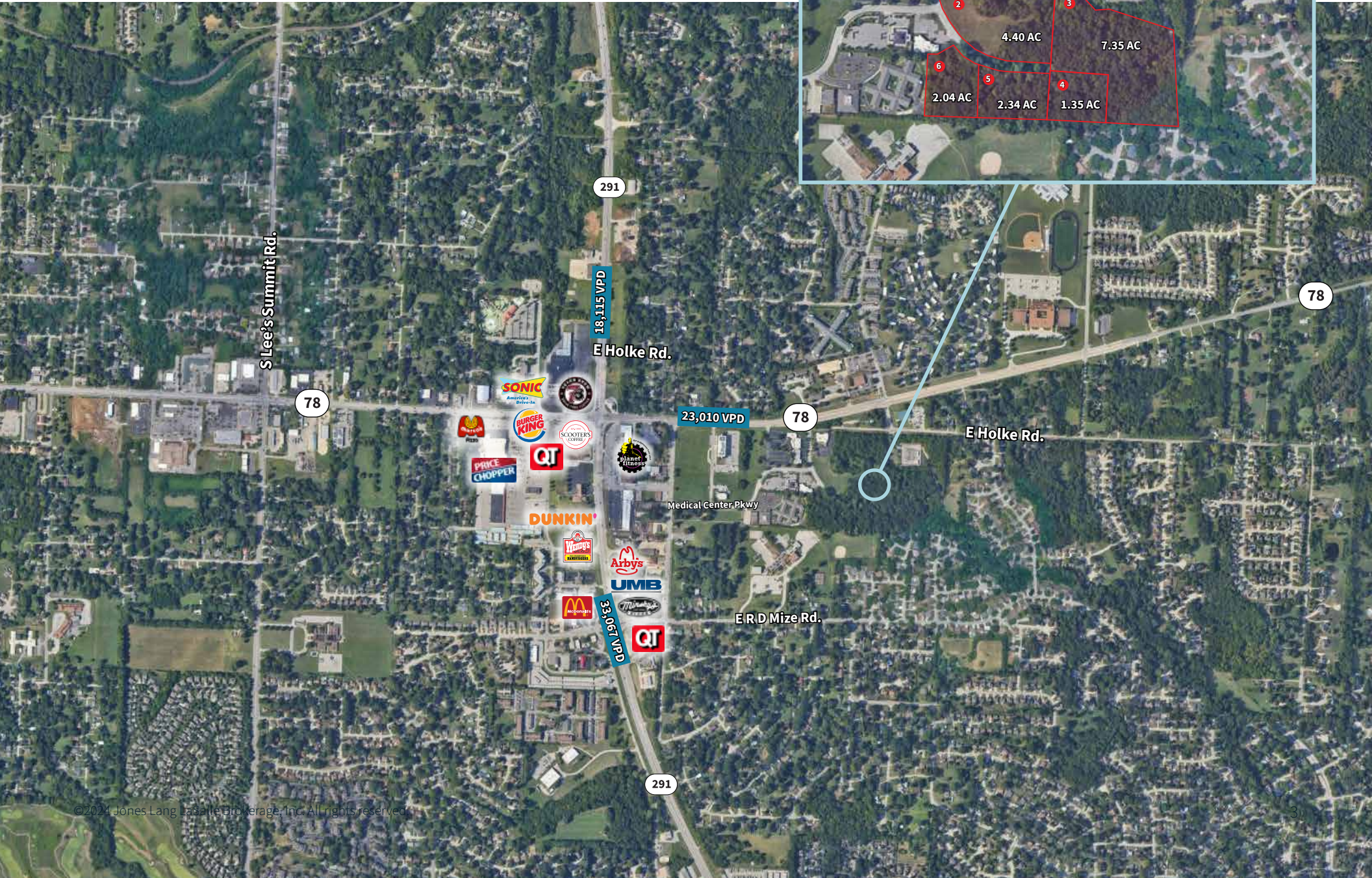
Acres	2.04 AC
SF	88,894 SF
Pricing	\$88,894.00 (\$1.00/SF)

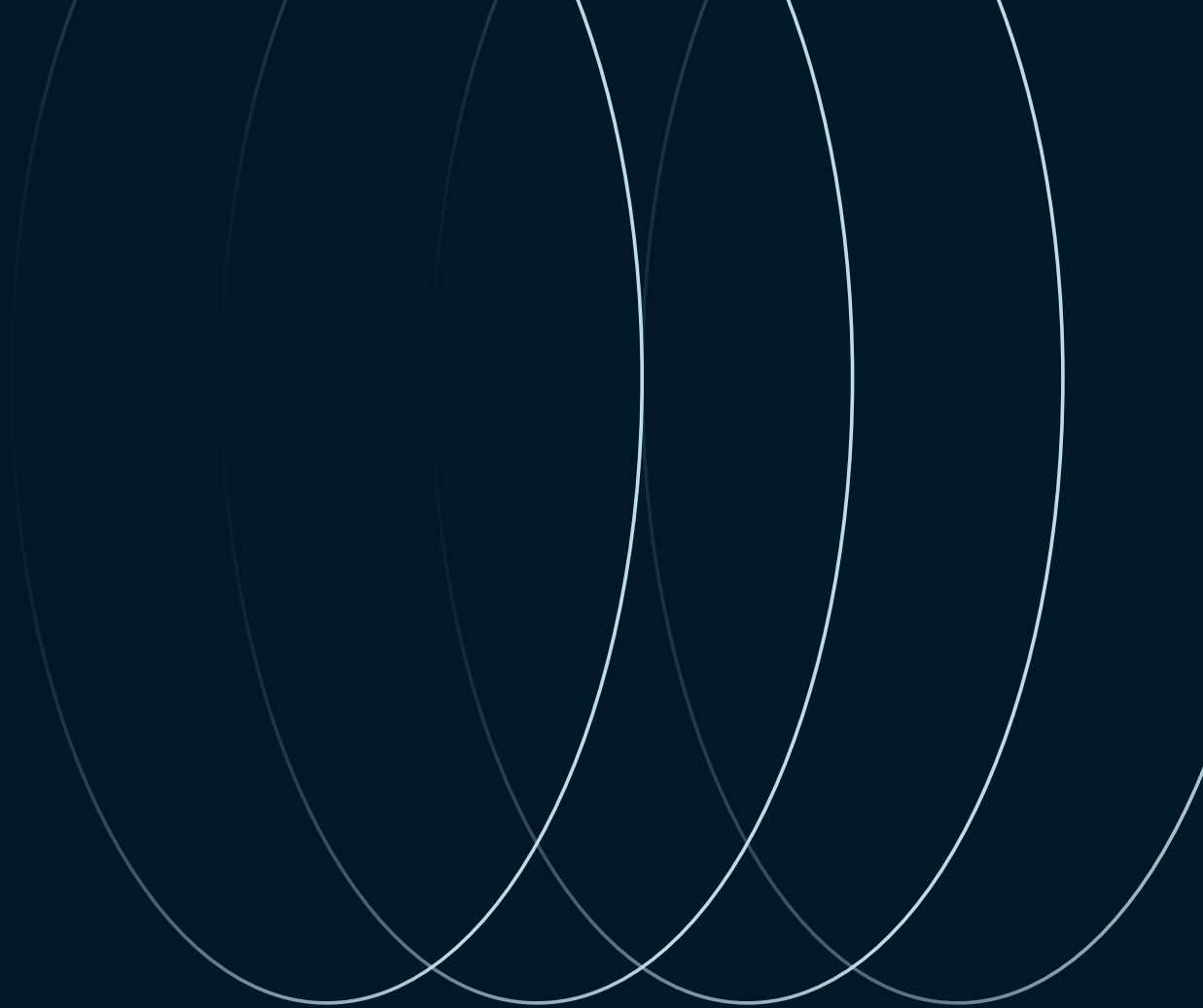


Demographic overview

	1 mile	3 miles	5 miles
Estimated population	9,013	58,968	141,782
Estimated households	3,961	25,338	58,728
Est. Average HH income	\$76,789	\$77,313	\$81,993

Location



**Contact:****RJ Trowbridge***Executive Vice President*

913 469 4637

rj.trowbridge@jll.com**Avery Comeau***Associate*

913 927 9252

avery.comeau@jll.com