



## FLEX SPACE AVAILABLE FOR LEASE!

### THE PROPERTY

Georgibelle Business Park is nestled in the Memorial City area with unparalleled accessibility and access to I-10 and new retail and development surrounding the property. The location capitalizes on the dynamic energy of the highly active area, specifically for this product type. Georgibelle Business Park availability ranges from 100 - 5,500 SF.

The park is professionally owned and managed by Pagewood. Significant capital improvements include:

- Concrete repairs throughout the site
- New roofs or repairs on all buildings
- Landscaping upgrades throughout the park
- Painting and repairs to building facades
- Spec improvements including lighting, tiling, office finishes etc.

### PROPERTY HIGHLIGHTS

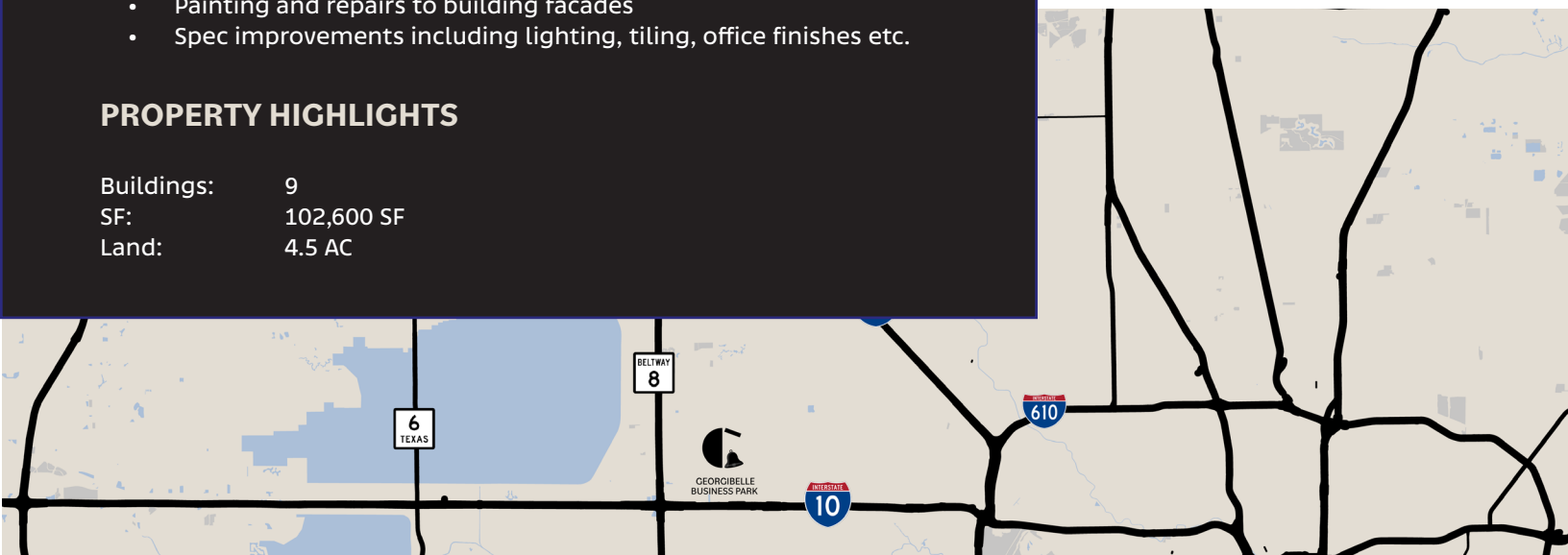
Buildings: 9  
SF: 102,600 SF  
Land: 4.5 AC

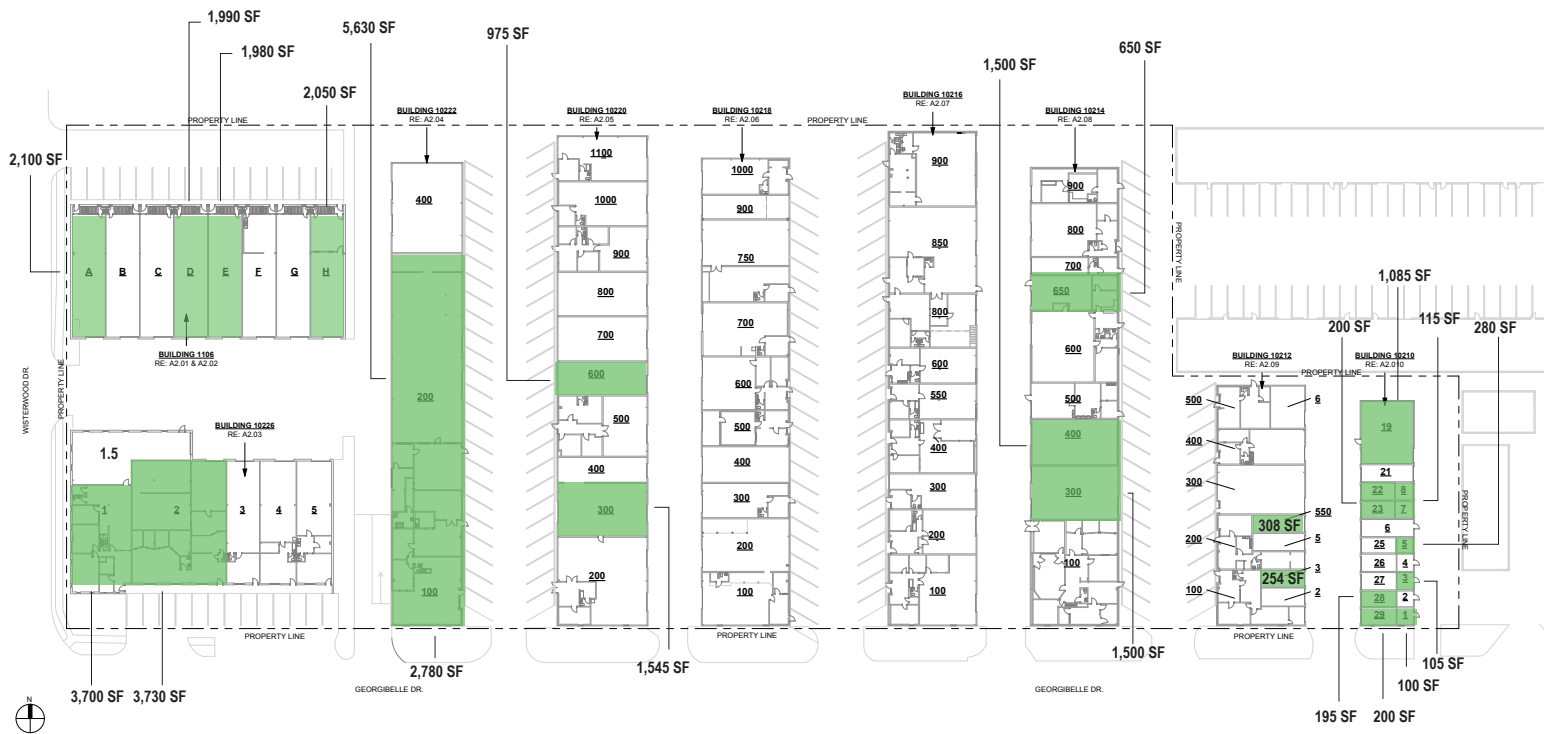


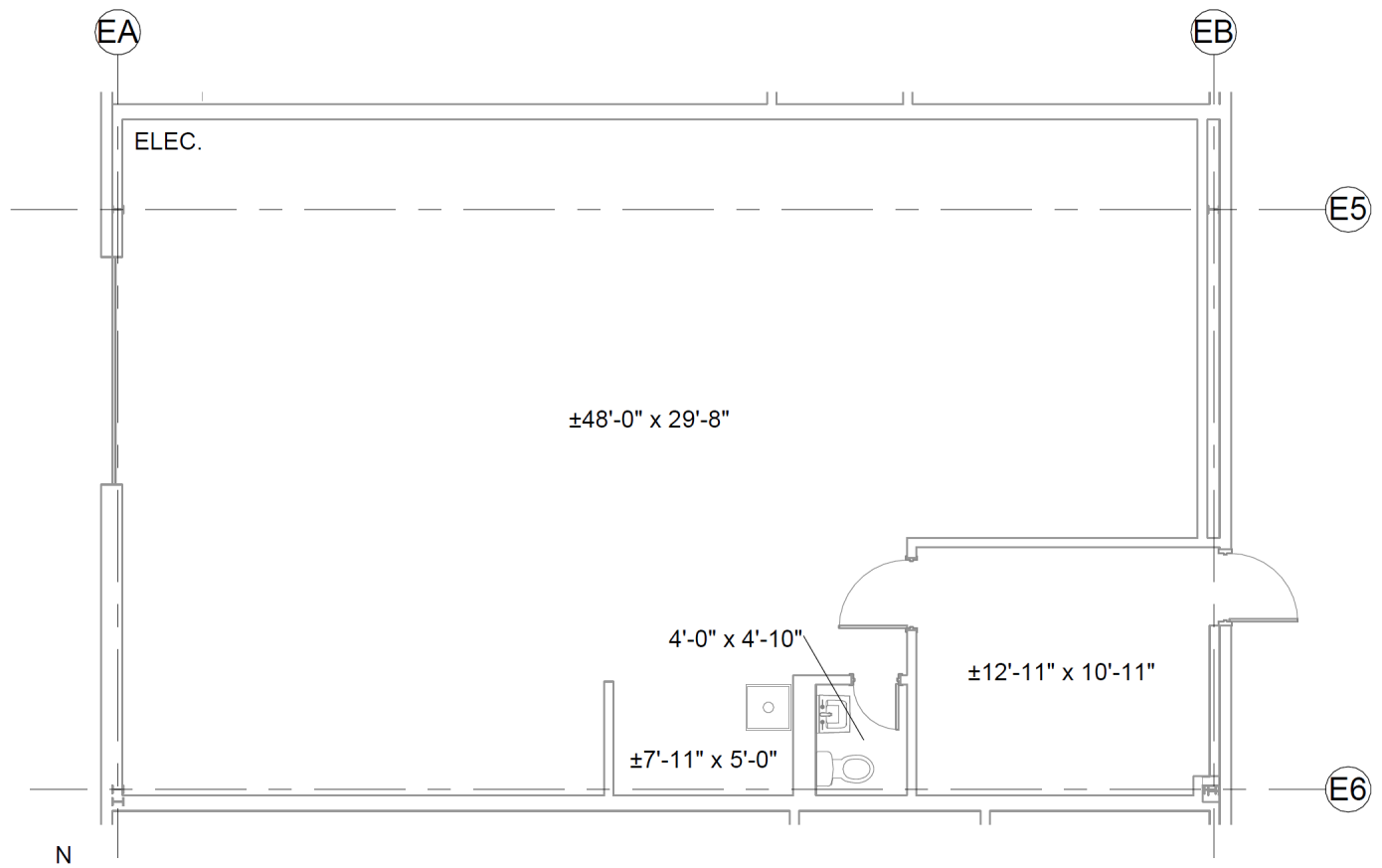
9 TOTAL  
BUILDINGS



MOVE-IN READY  
SUITES











## PARK HIGHLIGHTS

### Building 1:

10210 GEORGIBELLE

Building Size: 3,798 SF

### Building 2:

10212 GEORGIBELLE

Building Size: 6,570 SF

### Building 3:

10214 GEORGIBELLE

Building Size: 12,950 SF

### Building 4:

10216 GEORGIBELLE

Building Size: 14,300 SF

### Building 5:

10218 GEORGIBELLE

Building Size: 16,250 SF

### Building 6:

10220 GEORGIBELLE

Building Size: 13,500 SF

### Building 7:

10222 GEORGIBELLE

Building Size: 10,400 SF

### Building 8:

10226 GEORGIBELLE

Building Size: 10,650 SF

### Building 9:

1106 WISTERWOOD

Building Size: 16,800 SF

## AMENITIES & FEATURES:

Move-in ready suites available featuring dedicated office space, restrooms, grade-level loading doors and dedicated parking spaces.







GEORGIBELLE  
BUSINESS PARK



LEASED BY:



**ALPINE  
PARTNERS**

From Foundation to Summit

OWNED & MANAGED BY:

**PAGEWOOD®**

LEASING CONTACTS:

**DALTON FAIRES**

[dfaires@alpinecre.net](mailto:dfaires@alpinecre.net)

405-496-5024

**ANTHONY SPEARMAN**

[aspearman@alpinecre.net](mailto:aspearman@alpinecre.net)

832-458-9381