

Algodon Medical

3033 N Algodon, Phoenix, AZ 85037



Presented By:
Realty Executives Paradise Valley



Algodon Medical

3033 N Algodon, Phoenix, AZ 85037

Property Details

Now Pre-Leasing: 53,837 RSF | Two-Story Class A Medical & General Office Building – Delivering September 2026

Be among the first to secure space in this state-of-the-art, Class A medical and general office building, offering 53,837 RSF across two efficient floors. Delivering in September 2026, this brand-new construction presents a rare opportunity to customize and design your ideal workspace from the ground up.

Property Highlights:

- Total Building Size: 53,837 rentable square feet
- Two-story Class A construction designed for both medical and professional office use
- Customizable floor plans to accommodate single or multiple tenants
- Modern architectural design with premium finishes and infrastructure
- ADA-compliant with elevator access and welcoming lobbies
- Ample surface parking to support patient, client, and staff needs
- Excellent access to major medical centers, highways, and business corridors

Expected Delivery: September 2026

Secure your future space today and benefit from pre-leasing opportunities that allow for interior customization and long-term growth. Ideal for healthcare providers, outpatient services, administrative offices, and professional firms seeking a strategic and high-profile location.

Contact us now to discuss pre-leasing options and build-to-suit opportunities.

Price: \$32.00 - \$35.00 /SF/YR

View the full listing here: <https://www.loopnet.com/Listing/3033-N-Algodon-Phoenix-AZ/35831091/>

Rental Rate:	\$32.00 - \$35.00 /SF/YR
Property Type:	Office
Property Subtype:	Medical
Building Class:	A
Rentable Building Area :	53,837 SF
Year Built:	2027
Construction Status:	Proposed
Cross Streets:	Thomas Rd and 93rd Ave
Walk Score ®:	32 (Car-Dependent)
Transit Score ®:	38 (Some Transit)
Rental Rate Mo:	\$2.92 /SF/MO

Algodon Medical

3033 N Algodon, Phoenix, AZ 85037

Listing spaces

1st Floor	Space Available:	25,656 SF
	Rental Rate:	\$35.00 /SF/YR
	Date Available:	May 01, 2026
	Service Type:	Triple Net (NNN)
	Space Type:	New
	Space Use:	Office/Medical
	Lease Term:	Negotiable

2nd Floor	Space Available:	12,691 SF
	Rental Rate:	\$32.00 /SF/YR
	Date Available:	October 01, 2026
	Service Type:	Triple Net (NNN)
	Space Type:	New
	Space Use:	Office/Medical
	Lease Term:	Negotiable

Algodon Medical

3033 N Algodon, Phoenix, AZ 85037

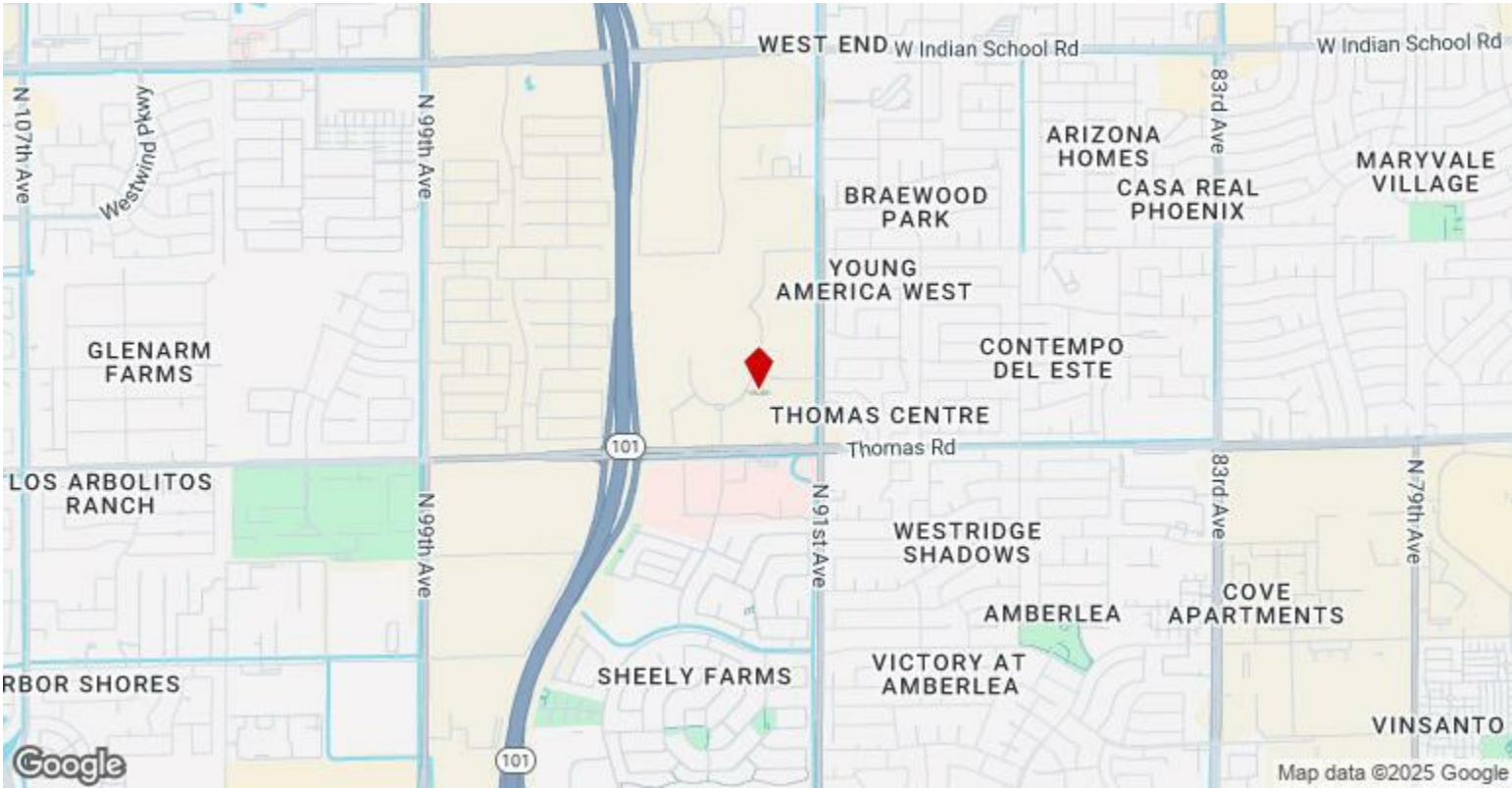
Major Tenant Information

Tenant	SF Occupied	Lease Expired
Arizona Lung Sleep And Valley Fever Institute	-	
Arizona Maternity & Women's Clinic	-	
Arizona Medical Academy	-	

Algodon Medical

3033 N Algodon, Phoenix, AZ 85037

Location



Algodon Medical

3033 N Algodon, Phoenix, AZ 85037

Property Photos



Primary Photo



Building Photo

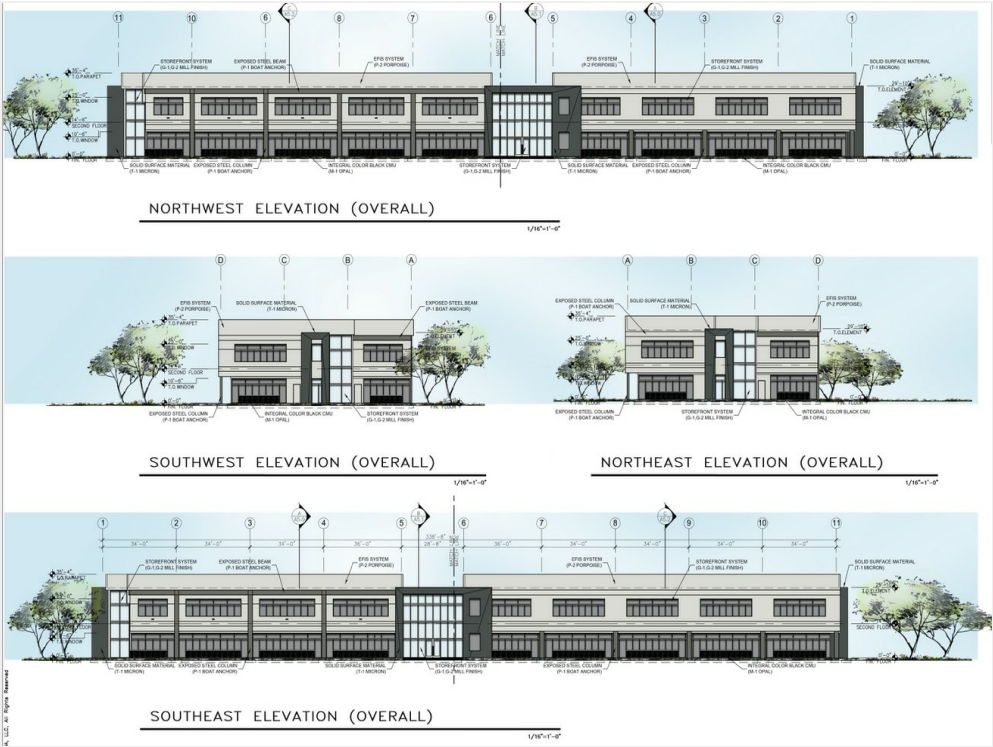
Algodon Medical

3033 N Algodon, Phoenix, AZ 85037

Property Photos



Building Photo

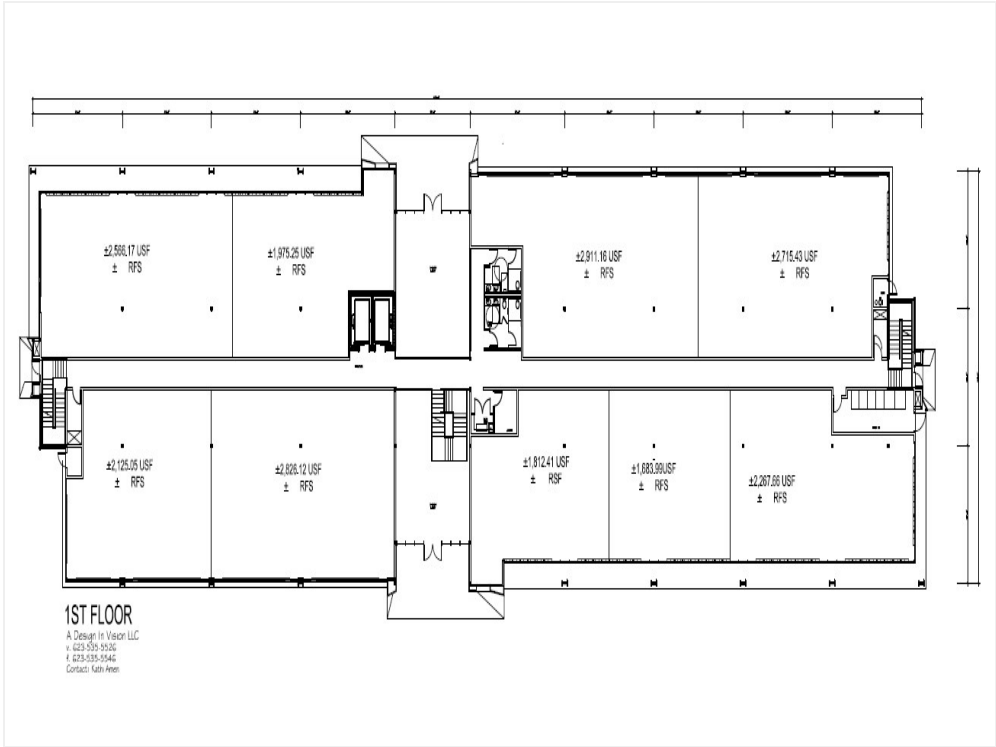


Building Photo

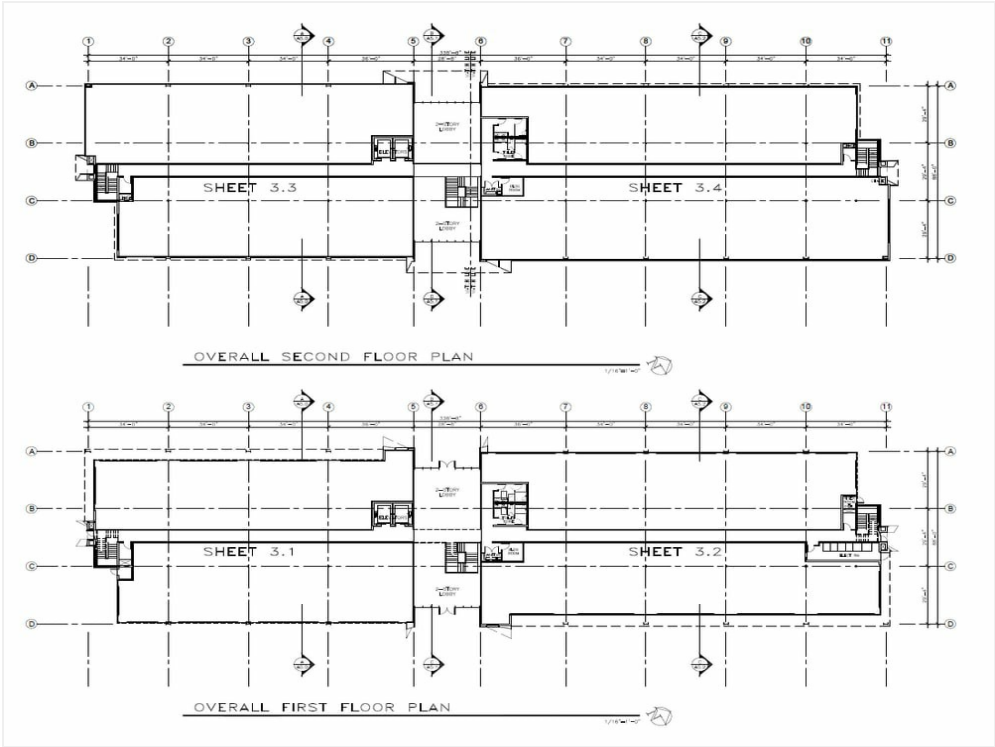
Algodon Medical

3033 N Algodon, Phoenix, AZ 85037

Property Photos



Building Photo

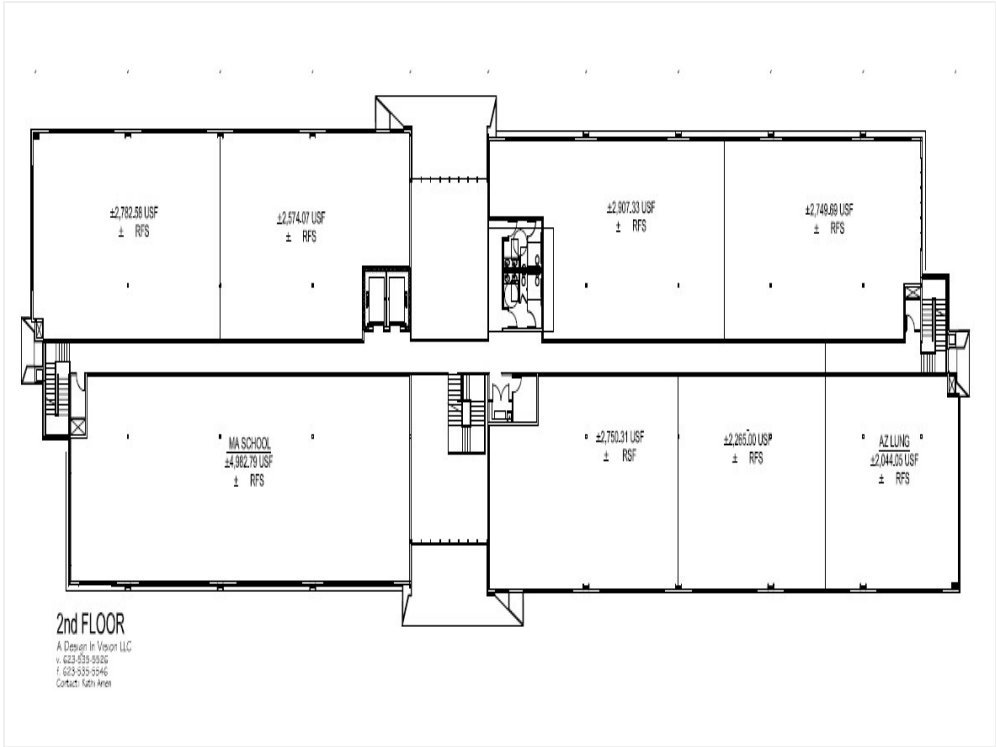


Building Photo

Algodon Medical

3033 N Algodon, Phoenix, AZ 85037

Property Photos



Building Photo

Algodon Medical

3033 N Algodon, Phoenix, AZ 85037



Jim McCabe

jkmccabe@cox.net

(602) 809-2890

**Realty Executives
Paradise Valley**

1060 N Hayden Blvd, Suite 100
Scottsdale, AZ 85260

