

Ashworth Place

7545

Ashworth Road | West Des Moines

Justin Lossner CCIM, SIOR  
+1 515 371 0846  
justin.lossner@jll.com

Lucas Hedstrom  
+1 515 564 9269  
lucas.hedstrom@jll.com



Jones Lang LaSalle Brokerage, Inc. RE Lic. #01856260

# PROPERTY HIGHLIGHTS

Ashworth Place offers 30,000 square feet of modern, Class 'A' boutique office space located directly along West Des Moines' prominent Jordan Creek Parkway office corridor. This unique 2-story building features extensive glass lines, a beautiful 2-story lobby and unbeatable modern amenities.



Modern construction



Extensive glass lines



Abundant free surface parking



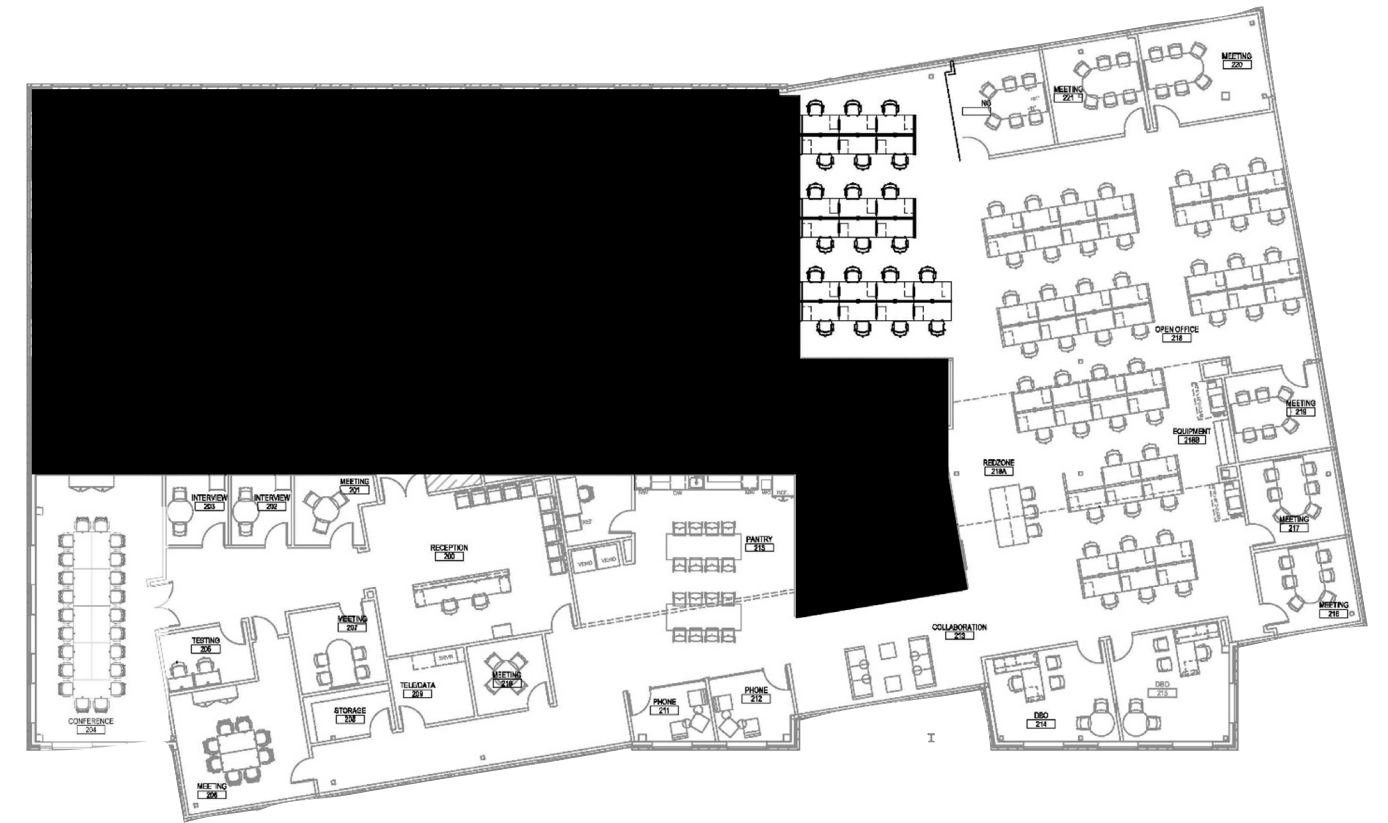
Fiber connectivity



Building signage opportunities



Close proximity to retail services and amenities



## FLOOR PLAN

**Lease Rate:** \$18.50 PSF NNN

**Square Footage:** Suite 200 - 10,753 RSF

**Available:** June 1st, 2026

**Operating Expenses:** Available upon request

**Parking:** 5 p 1,000

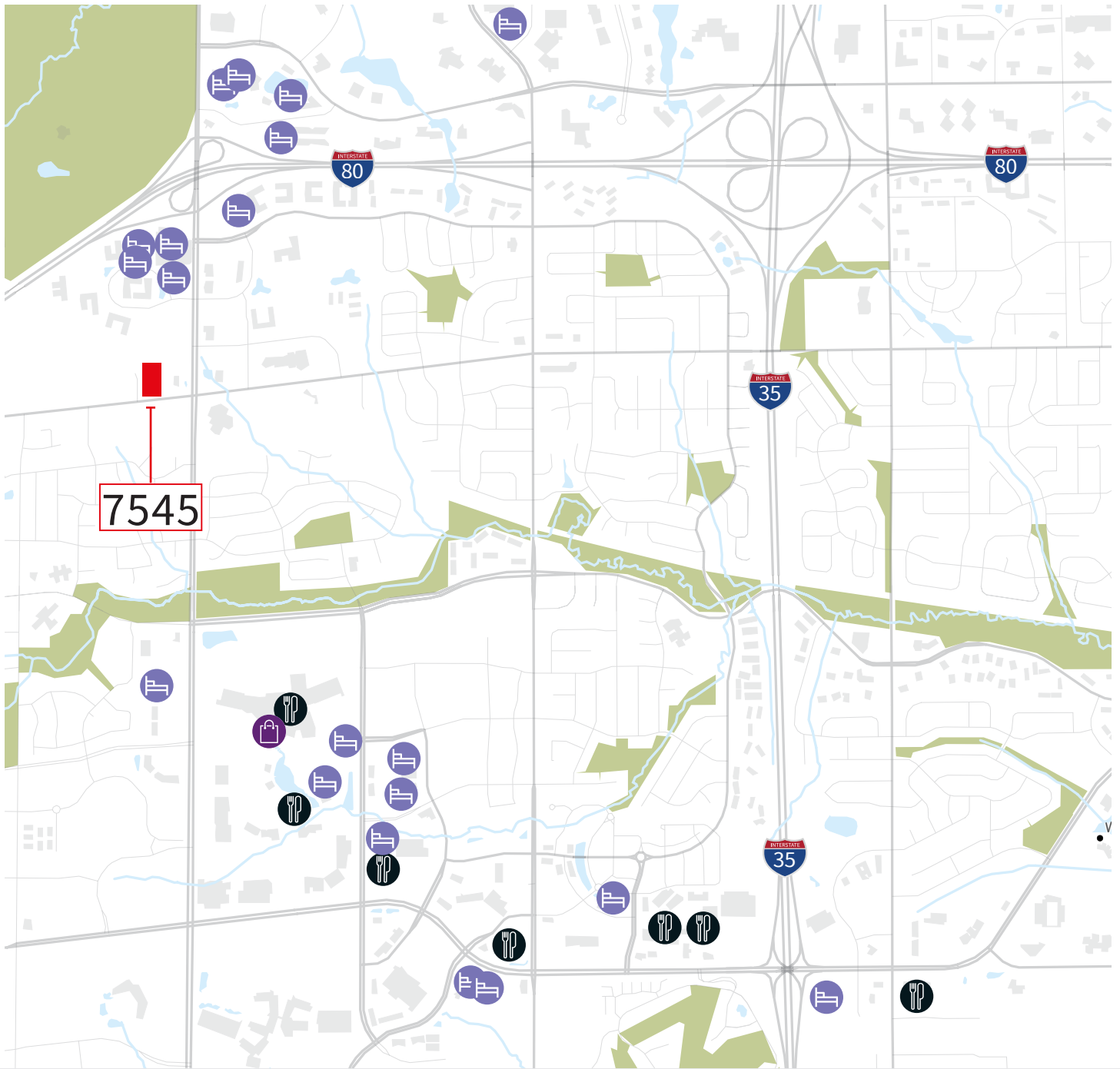
**Amenities:** Building signage available

**Space:** Updated modern buildout



**7545 Ashworth Road**

30,000 SF



# AREA AMENITIES



Hotel



Restaurant



Jordan Creek Mall

## CONTACT

Justin Lossner CCIM, SIOR  
 +1 515 371 0846  
 justin.lossner@jll.com



Lucas Hedstrom  
 +1 515 564 9269  
 lucas.hedstrom@jll.com