

30 NORTHAMPTON STREET

BOSTON, MA



Image has been digitally altered to remove tenant signage.

**±17,266 SF OF FULLY AIR-CONDITIONED
SPACE AVAILABLE**

INDUSTRIAL • FLEX • R&D

CBRE

30 NORTHAMPTON STREET BOSTON, MA

AVAILABLE SPACE

±17,266 SF

CEILING HEIGHT

Front: ±10,706 SF at 12'8" to joist

Rear: ±6,560 SF at 14'9" to joist

LOADING

Two (2) dock doors (expandable to four)

SEWER & WATER

City of Boston

PARKING

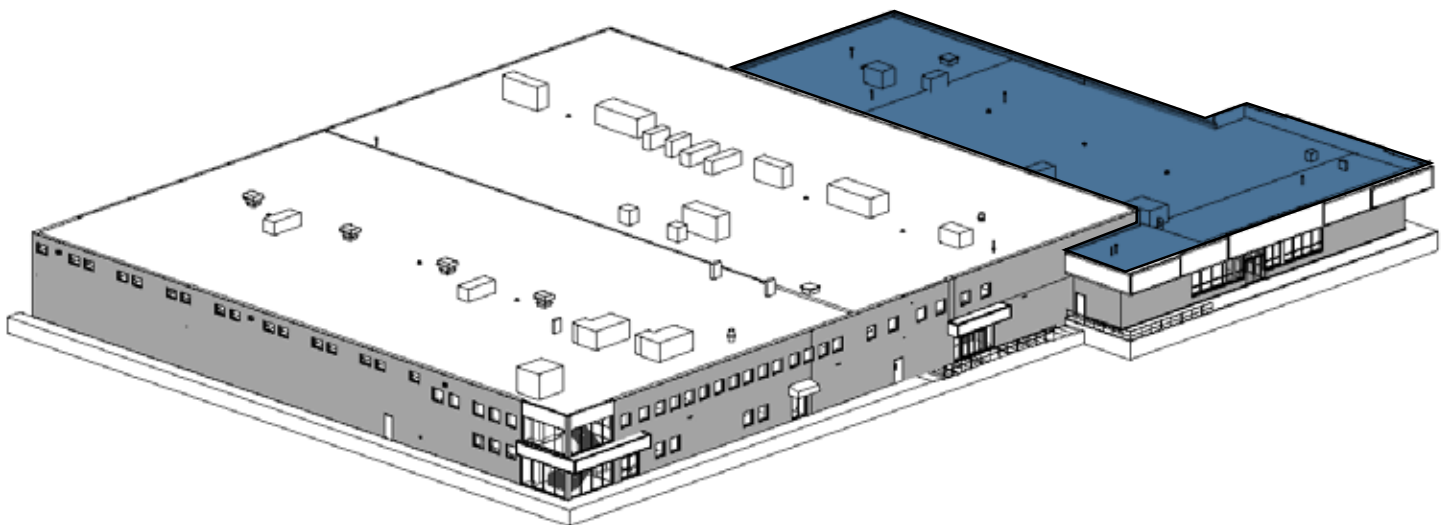
Up to 45 spaces

POWER

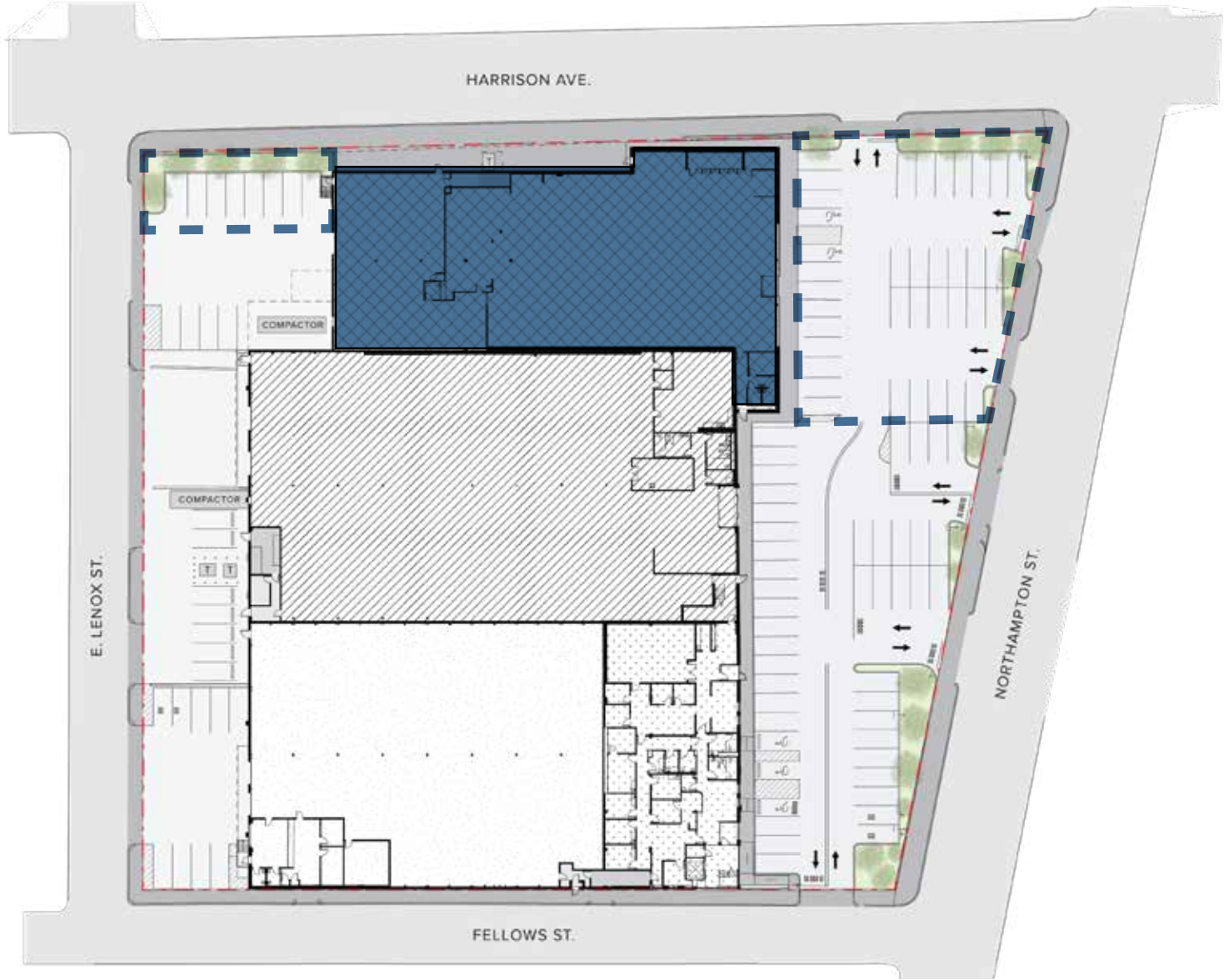
800A at 208/120V, 3ph 4w

HVAC

Four (4) RTU's (Fully AC'd)



SITE PLAN





CONTACT US

Rob Byrne

Executive Vice President
 +1 617 827 7486
 robert.byrne@cbre.com

Chris Mullen

Senior Vice President
 +1 781 801 4432
 chris.mullen2@cbre.com

Caroline Munn

Senior Associate
 +1 516 851 6261
 caroline.munn@cbre.com

© 2025 CBRE, Inc. All rights reserved. This information has been obtained from sources believed reliable, but has not been verified for accuracy or completeness. You should conduct a careful, independent investigation of the property and verify all information. Any reliance on this information is solely at your own risk. CBRE and the CBRE logo are service marks of CBRE, Inc. All other marks displayed on this document are the property of their respective owners, and the use of such logos does not imply any affiliation with or endorsement of CBRE. Photos herein are the property of their respective owners. Use of these images without the express written consent of the owner is prohibited.