



# OFFICE SPACE FOR LEASE IN BRF INTERTECH BUILDING

2031 KINGS HIGHWAY, SUITE 102, SHREVEPORT, LA 71103

- 7,196 SF office space in Biomedical Research Foundation building
- 5 common conference rooms with full Microsoft Teams integration
- Tenant Network with redundant fiber internet connections and building-wide WiFi
- Rack space in a data room, with redundant power, cooling and raised floor
- Showers in upstairs bathrooms
- Shared postage meter and package receiving area, P.O. boxes
- Plentiful parking
- Autoclave and Sub Zero Celsius Freezers for laboratory tenants
- Dock height receiving area
- Digital signage at Kings/Mansfield intersection
- Green Room Studio with some motion capture abilities
- Zoned IC (Institutional Campus)
- Lease rate: \$32/SF - full service gross lease inclusive of fiber internet, janitorial, use of common area and conference rooms



For more information, contact:

**Claire Childs | 318.222.2244 | [cchilds@vintagerealty.com](mailto:cchilds@vintagerealty.com)**

**G. Archer Frierson III, CCIM, SIOR | [gfrierson@vintagerealty.com](mailto:gfrierson@vintagerealty.com)**

ALL INFORMATION CONTAINED HEREIN IS BELIEVED TO BE ACCURATE, BUT IS NOT WARRANTED AND NO LIABILITY OF ERRORS OR OMISSIONS IS ASSURED BY EITHER THE PROPERTY OWNER OR VINTAGE REALTY COMPANY OR ITS AGENTS AND EMPLOYEES. PRICES AS STATED HEREIN AND PRODUCT AVAILABILITY IS SUBJECT TO CHANGE AND/OR SALE OR LEASE WITHOUT PRIOR NOTICE, AND ALL SIZES AND DIMENSIONS ARE SUBJECT TO CORRECTION. REV 7/2024



# HIGH END OFFICE SPACE FOR LEASE

2031 KINGS HIGHWAY, SUITE 102  
SHREVEPORT, LA 71103

## FLOOR PLAN



**SUITE 102**  
**7,196 SF**



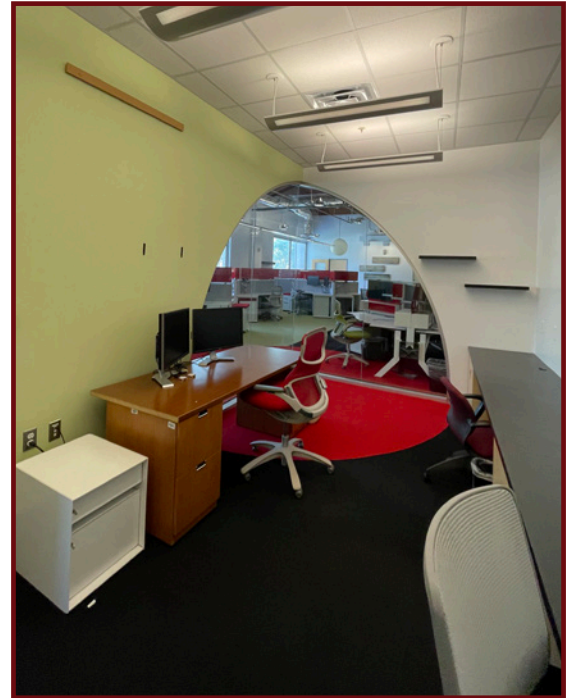
For more information, contact:

**Claire Childs | 318.222.2244 | [cchilds@vintagerealty.com](mailto:cchilds@vintagerealty.com)**  
**G. Archer Frierson III, CCIM, SIOR | [gfrierson@vintagerealty.com](mailto:gfrierson@vintagerealty.com)**

ALL INFORMATION CONTAINED HEREIN IS BELIEVED TO BE ACCURATE, BUT IS NOT WARRANTED AND NO LIABILITY OF ERRORS OR OMISSIONS IS ASSURED BY EITHER THE PROPERTY OWNER OR VINTAGE REALTY COMPANY OR ITS AGENTS AND EMPLOYEES. PRICES AS STATED HEREIN AND PRODUCT AVAILABILITY IS SUBJECT TO CHANGE AND/OR SALE OR LEASE WITHOUT PRIOR NOTICE, AND ALL SIZES AND DIMENSIONS ARE SUBJECT TO CORRECTION. 7/2024

# HIGH END OFFICE SPACE FOR LEASE

2031 KINGS HIGHWAY, SUITE 102  
SHREVEPORT, LA 71103



For more information, contact:

**Claire Childs | 318.222.2244 | [cchilds@vintagerealty.com](mailto:cchilds@vintagerealty.com)**  
**G. Archer Frierson III, CCIM, SIOR | [gfrierson@vintagerealty.com](mailto:gfrierson@vintagerealty.com)**

ALL INFORMATION CONTAINED HEREIN IS BELIEVED TO BE ACCURATE, BUT IS NOT WARRANTED AND NO LIABILITY OF ERRORS OR OMISSIONS IS ASSURED BY EITHER THE PROPERTY OWNER OR VINTAGE REALTY COMPANY OR ITS AGENTS AND EMPLOYEES. PRICES AS STATED HEREIN AND PRODUCT AVAILABILITY IS SUBJECT TO CHANGE AND/OR SALE OR LEASE WITHOUT PRIOR NOTICE, AND ALL SIZES AND DIMENSIONS ARE SUBJECT TO CORRECTION. 7/2024

# HIGH END OFFICE SPACE FOR LEASE

2031 KINGS HIGHWAY, SUITE 102  
SHREVEPORT, LA 71103



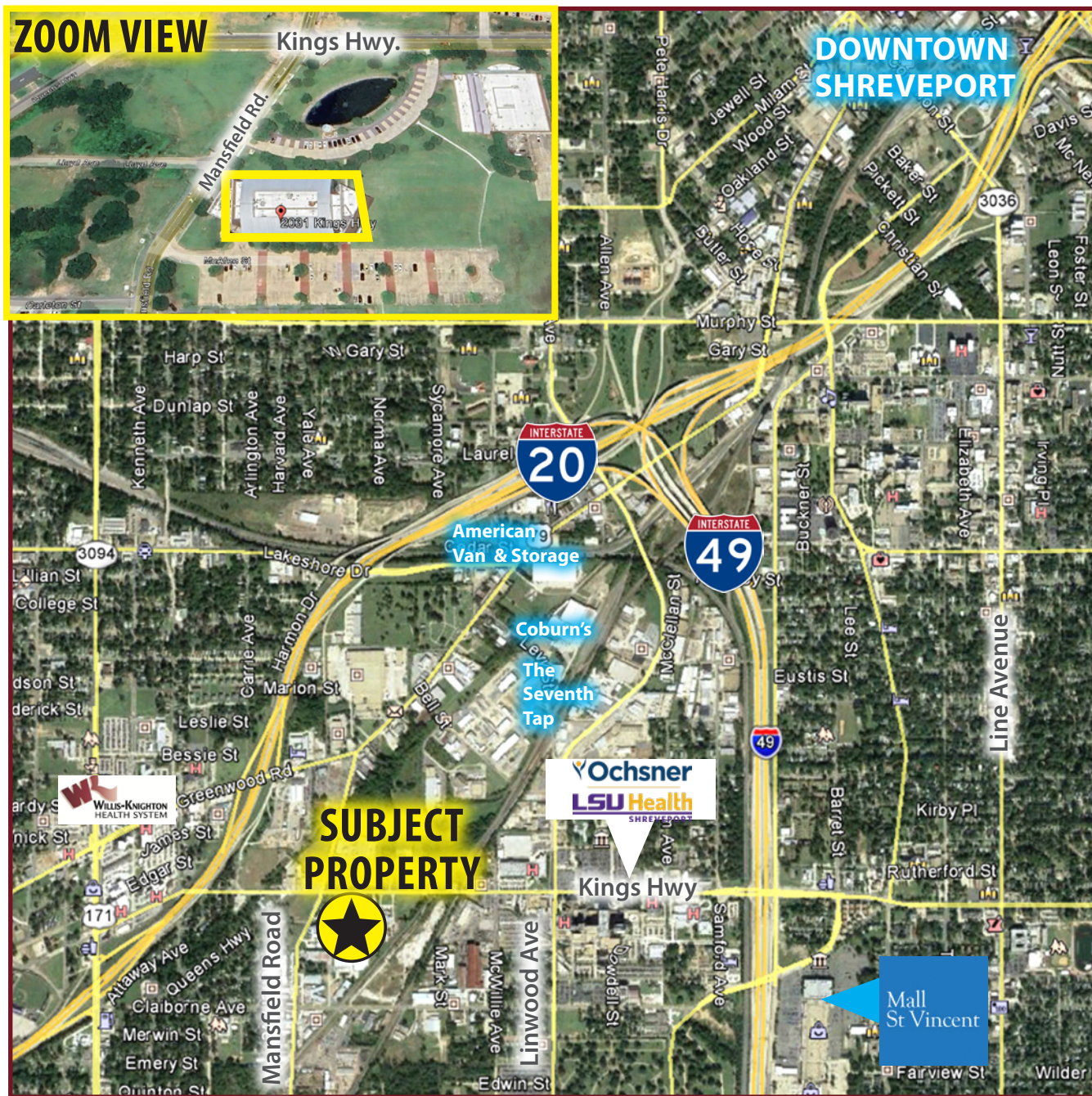
For more information, contact:

**Claire Childs | 318.222.2244 | [cchilds@vintagerealty.com](mailto:cchilds@vintagerealty.com)**  
**G. Archer Frierson III, CCIM, SIOR | [gfrierson@vintagerealty.com](mailto:gfrierson@vintagerealty.com)**

ALL INFORMATION CONTAINED HEREIN IS BELIEVED TO BE ACCURATE, BUT IS NOT WARRANTED AND NO LIABILITY OF ERRORS OR OMISSIONS IS ASSURED BY EITHER THE PROPERTY OWNER OR VINTAGE REALTY COMPANY OR ITS AGENTS AND EMPLOYEES. PRICES AS STATED HEREIN AND PRODUCT AVAILABILITY IS SUBJECT TO CHANGE AND/OR SALE OR LEASE WITHOUT PRIOR NOTICE, AND ALL SIZES AND DIMENSIONS ARE SUBJECT TO CORRECTION. 7/2024

# HIGH END OFFICE SPACE FOR LEASE

2031 KINGS HIGHWAY, SUITE 102  
SHREVEPORT, LA 71103



For more information, contact:

**Claire Childs | 318.222.2244 | [cchilds@vintagerealty.com](mailto:cchilds@vintagerealty.com)**  
**G. Archer Frierson III, CCIM, SIOR | [gfrierson@vintagerealty.com](mailto:gfrierson@vintagerealty.com)**

ALL INFORMATION CONTAINED HEREIN IS BELIEVED TO BE ACCURATE, BUT IS NOT WARRANTED AND NO LIABILITY OF ERRORS OR OMISSIONS IS ASSURED BY EITHER THE PROPERTY OWNER OR VINTAGE REALTY COMPANY OR ITS AGENTS AND EMPLOYEES. PRICES AS STATED HEREIN AND PRODUCT AVAILABILITY IS SUBJECT TO CHANGE AND/OR SALE OR LEASE WITHOUT PRIOR NOTICE, AND ALL SIZES AND DIMENSIONS ARE SUBJECT TO CORRECTION. 7/2024